

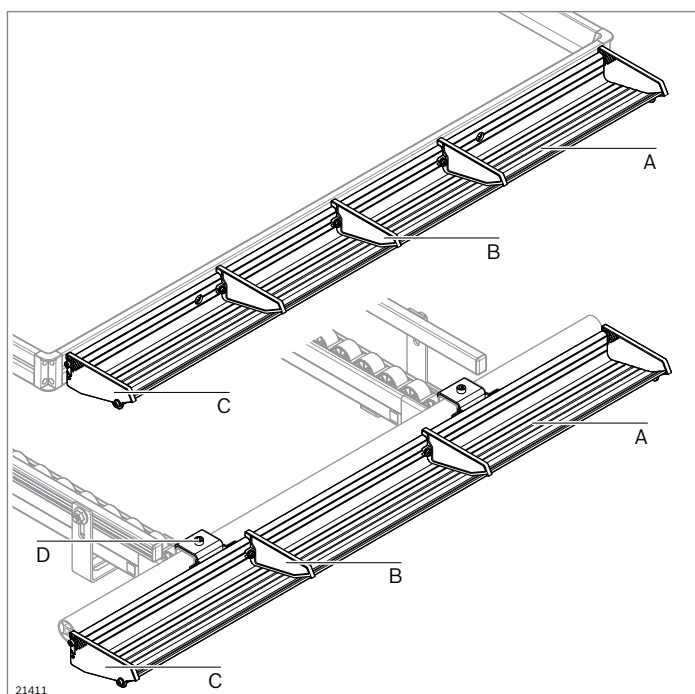


22036

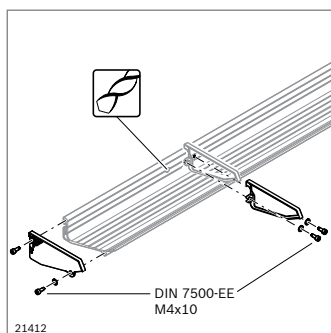
Grab ledge



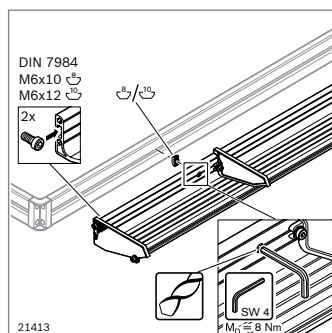
- Ergonomic, handy supply of small parts such as screws, nuts, and washers
- For fitting to material shelves or conveyor tracks to separate a mixed parts supply on an ergonomically designed picking surface
- Fast, secure picking
- Self-assembly elements for the individual assembly of grab ledges with different widths and partitions



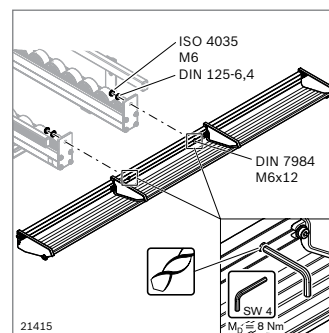
21411



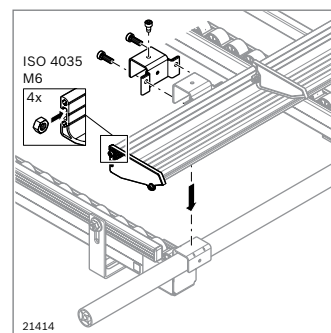
21412



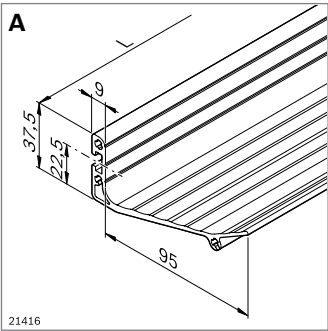
21413



21415



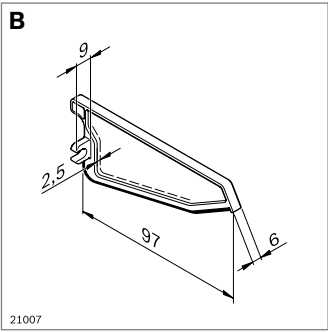
21414



- Grab ledge with grooved surface for ergonomic, fast, and secure picking

Material: aluminum; anodized
 Aluminum; ESD-compatible surface (ESD)

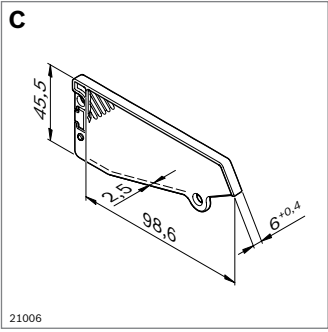
	L (mm)		ESD	No.
A Grab ledge	855	2		3 842 544 774
	855	2	⚡	3 842 546 747



- Partition wall for individual partitioning of the grab ledge
- Rubber lip for precise positioning on the grab ledge

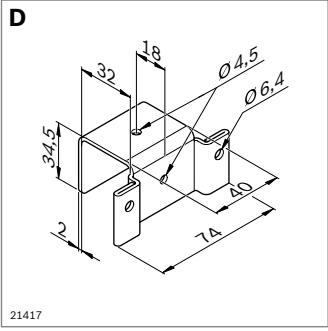
Material: PA 66; black
 Scope of delivery: includes fastening material

			ESD	No.
B Partition wall	10	⚡		3 842 544 776



- Stop plate for end of grab ledge
- Material: PA 66; black
 Scope of delivery: includes fastening material

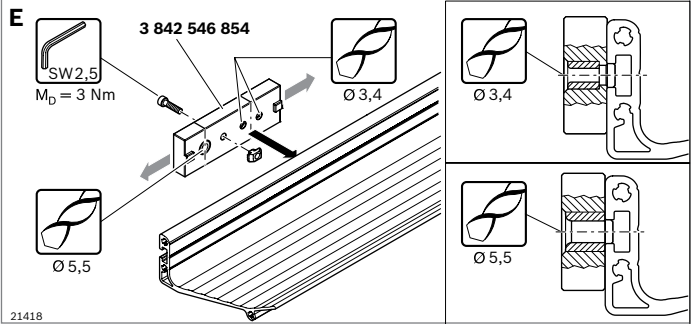
			ESD	No.
C Stop plate	4	⚡		3 842 544 778



- Terminal bracket to fasten the grab ledge to a rail holder with stop (XLean, Lean, and EcoFlow conveyor sections)

Material: sheet steel; galvanized
 Scope of delivery: includes fastening material

			ESD	No.
D Terminal bracket	2	⚡		3 842 544 780



- Drilling template for mounting holes and through holes in the grab ledge

Scope of delivery: includes fastening material

	No.
E Drilling template	3 842 546 854