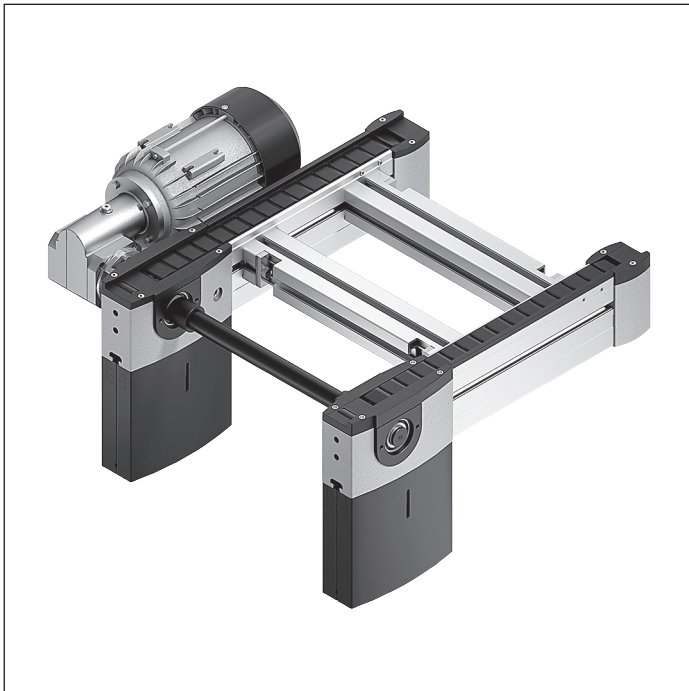




Flat top chain conveyor medium



The flat top chain conveys primarily medium and large-sized workpiece pallets in environments with low to moderate production emissions.

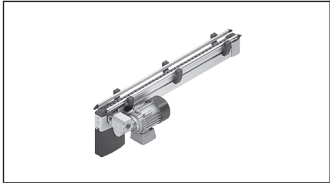
The arcing capacity of the plastic flat top chain permits continuous drive combinations with curve arcs (see p. 4-32).

PA wear pads on the workpiece pallets are recommended in the combination with the plastic flat top chain. This permits in the standard design with plastic glide profiles in the section profile surface loads of up to 1 kg/cm, whereas the optionally available version with steel glide profiles can tolerate surface loads of up to 1.5 kg/cm.

A particularly robust combination can be created from the HD profiles in combination with steel glide profiles and steel guide profile.

Reversible operation is not permitted with the flat top chain conveyor medium.

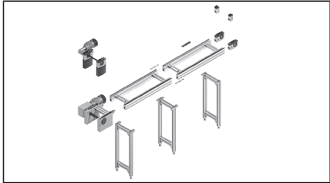
If flat top chains are used, the LU2 automatic lubrication unit is highly recommended.



Single-track CS/C section, BS 2/C belt sections



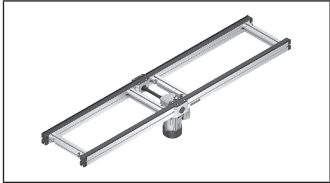
3-52



**Parts for AS 2/..., UM 2/..., ST 2...
conveyor units**



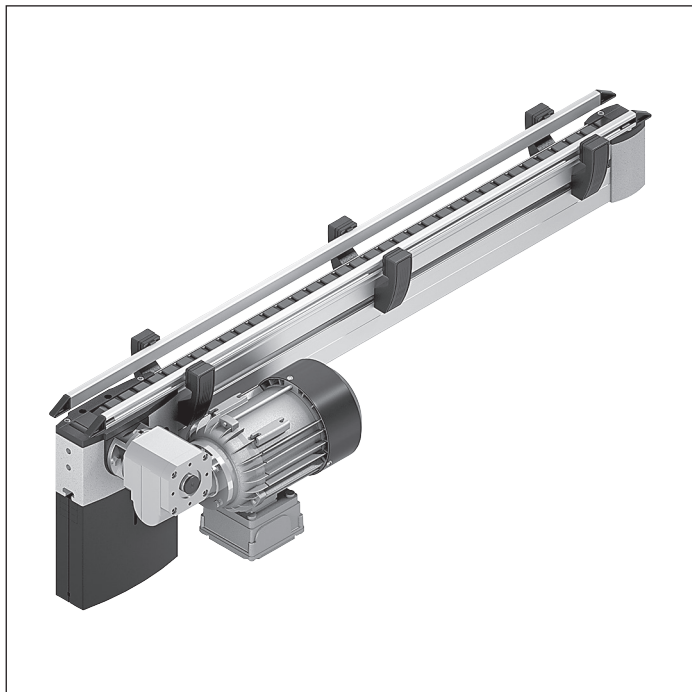
3-66



Connection kits

3-236

Single-track CS/C section



- ▶ Motor connection: optionally with cable/plug or terminal box
- ▶ Motor mounting right or left
- ▶ Conveyor medium: plastic flat top chain (with KA = A suitable for use in an EPA)
- ▶ Special models on request
- ▶ Reversible operation is possible for $l \leq 2000$ mm and environments without small parts

The single-track CS/C section is a conveyor section that is ready for operation with own drive for the transportation of

small parts for mounting and assembly workstations.

Accessories

Recommended accessories

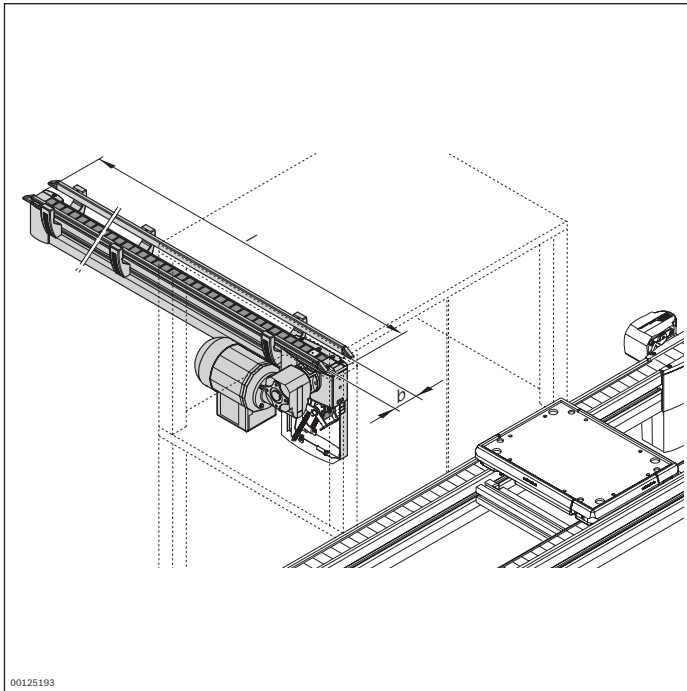
- ▶ Connection kits, see page 3-236
- ▶ SZ 2 leg sets, see page 6-2
- ▶ LU 2 automatic lubrication unit, see p. 3-84

Delivery notes

Condition on delivery

- ▶ Fully assembled

Ordering information



Material number		3842998277
b (mm)	Track width in direction of transport	42; 52; 62; 72
l (mm)	Length	350 ... 6000
v _N (m/min)	Nominal speed	0; 6; 9; 12; 15; 18
U (V)	Voltage	See motor data, p. 11-24ff
f (Hz)	Frequency	See motor data, p. 11-24ff
AT	Motor connection S = cable/plug K = terminal box	S; K
MA	Motor mounting R = right L = left	R; L
KA	Chain version Chain in standard version (KA = N) Chain suitable for use in an EPA (KA = A)	N; A

3

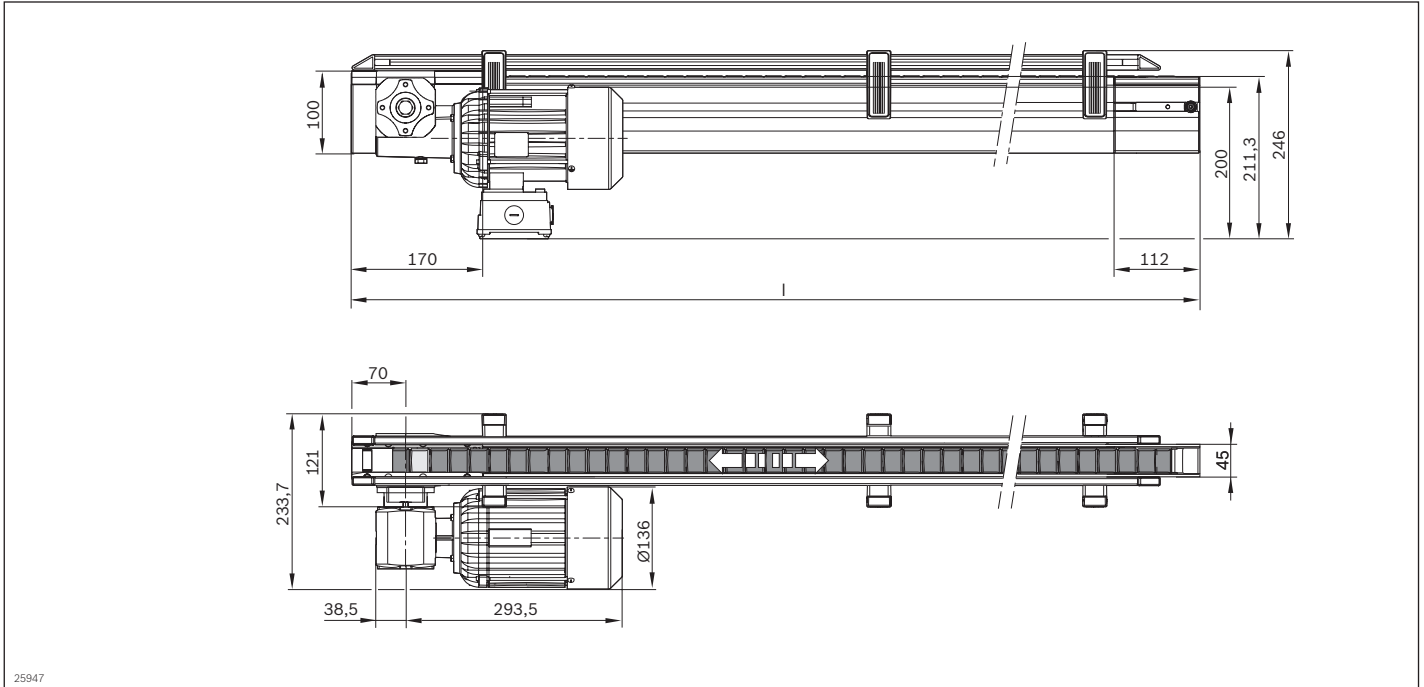
Technical data

Material number		3842998277	
Load			
Max. section load in accumulation operation	kg	at l = 2001 ... 6000 mm 100	at l = 350 ... 2000 mm 70
Features			
ESD			yes, with KA = A*
Max. operating temperature	T	°C	+40
Dimensions			
Length	l	mm	350 ... 6000

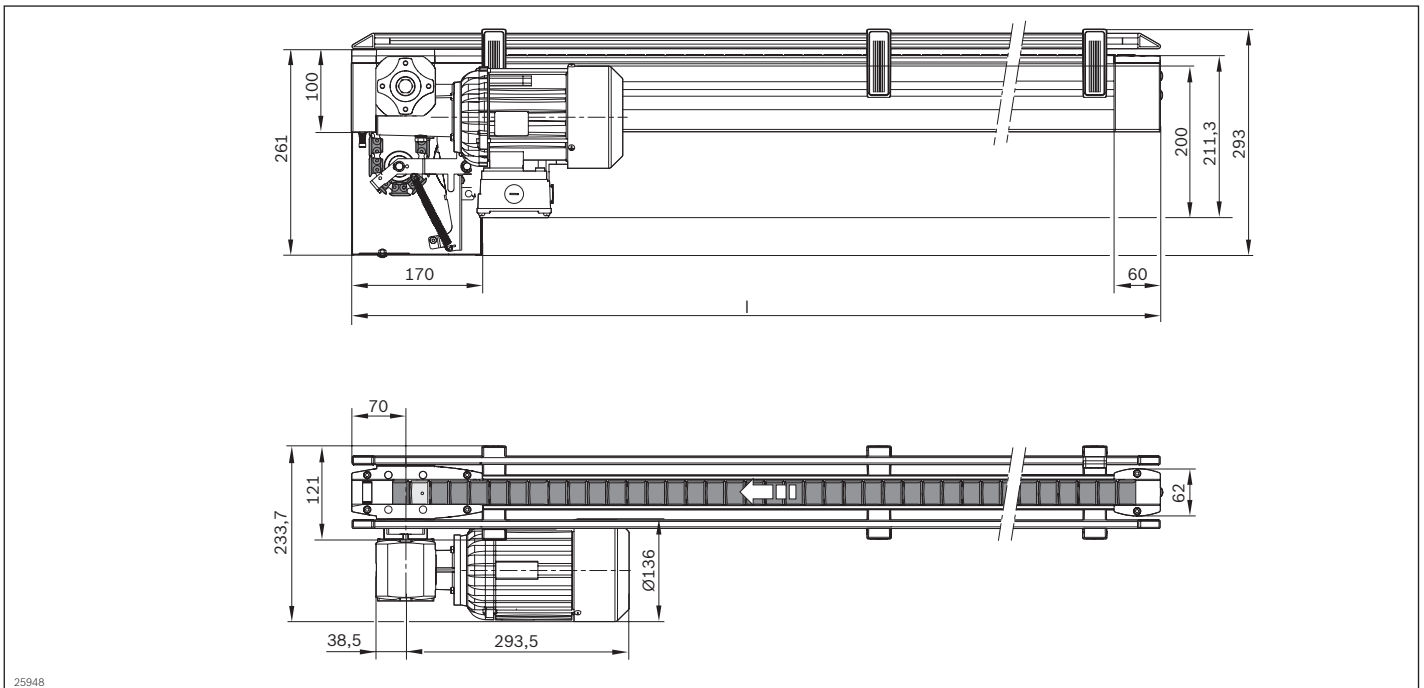
* Chain suitable for use in an EPA (KA = A)

3-54 **TS 2plus 7.0** | Longitudinal conveyor
Single-track CS/C section

Dimensions
CS/C ≤ 2000 mm



CS/C > 2000 mm



BS 2/C-100 belt section



- ▶ Functional operation conveyor complete with drive
- ▶ Longitudinal conveying of the workpiece pallet on conveyor sections of up to 6000 mm
- ▶ Transverse conveyor between parallel conveyor sections
- ▶ Conveyor medium: plastic flat top chain (with KA = A suitable for use in an EPA)
- ▶ Right, left or central motor mounting (central from track width of 240 mm)
- ▶ Motor connection: optionally with cable/plug or terminal box
- ▶ Special models on request
- ▶ Reversible operation not permitted
- ▶ Use with medium accumulation loads
- ▶ The LU 2 automatic lubrication unit is highly recommended

The belt section is a ready for operation conveyor section with own drive for the transportation of workpiece pallets in the longitudinal direction or for the transverse conveying

of the workpiece pallet between parallel conveyor sections in connection with two HQ 2 lift transverse units.

Accessories

Recommended accessories

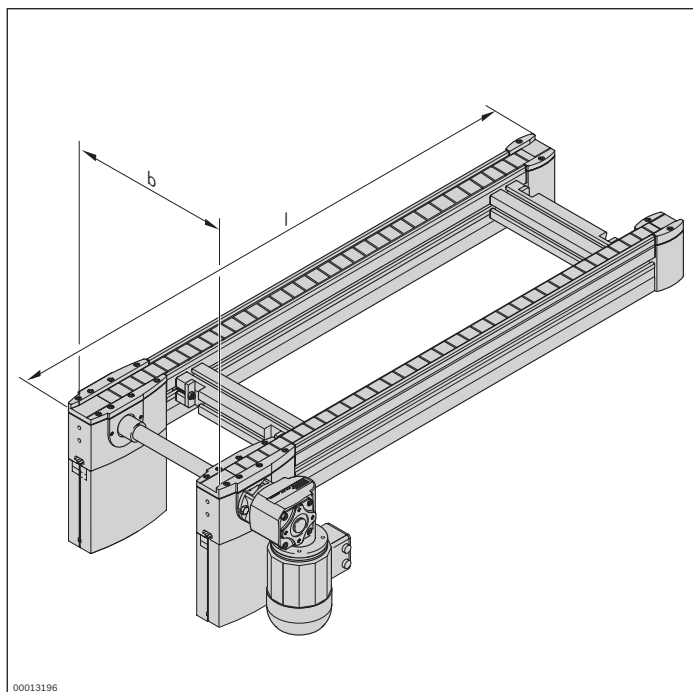
- ▶ Connection kits, see page 3-236
- ▶ SZ 2 leg sets, see page 6-2
- ▶ LU 2 automatic lubrication unit, see p. 3-84

Delivery notes

Condition on delivery

- ▶ Fully assembled

Ordering information



Material number		3842999917
b (mm)	Track width in direction of transport	160; 240; 320; 400; 480; 640; 800; 1040; 1200 160 ... 1200 ¹
l (mm)	Length	300 ... 6000
v _N (m/min)	Nominal speed	0 ² ; 6; 9; 12; 15; 18
U (V)	Voltage	See motor data, p. 11-24ff
f (Hz)	Frequency	See motor data, p. 11-24ff
AT	Motor connection S = cable/plug K = terminal box	S; K
MA	Motor mounting R = right L = left M = center	R; L; M ³
KA	Chain version Chain in standard version (KA = N) Chain suitable for use in an EPA (KA = A)	N; A

¹⁾ Individual width variants available

²⁾ v_N = 0; without motor or gear

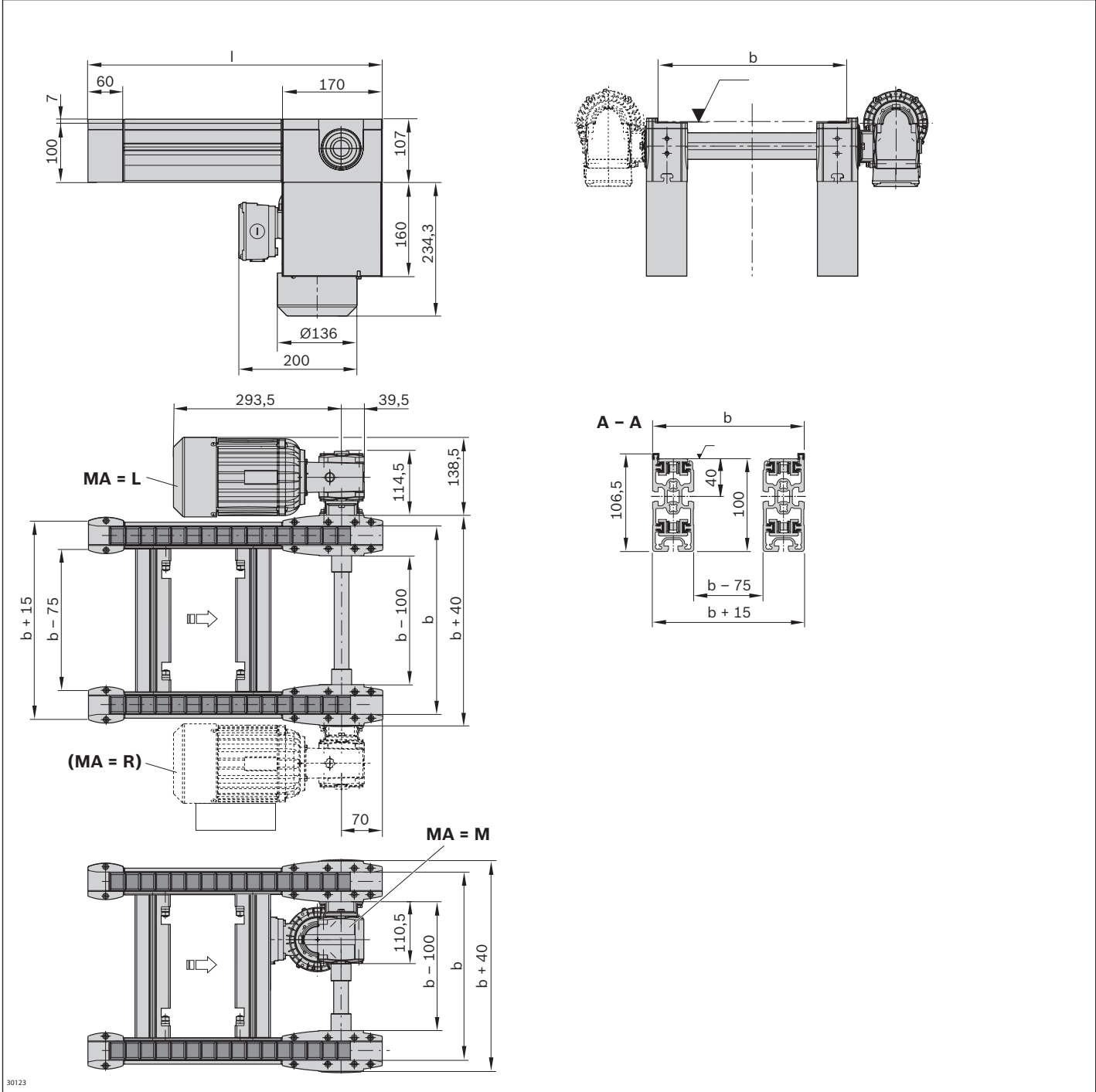
³⁾ MA = M only for b ≥ 240 mm

Technical data

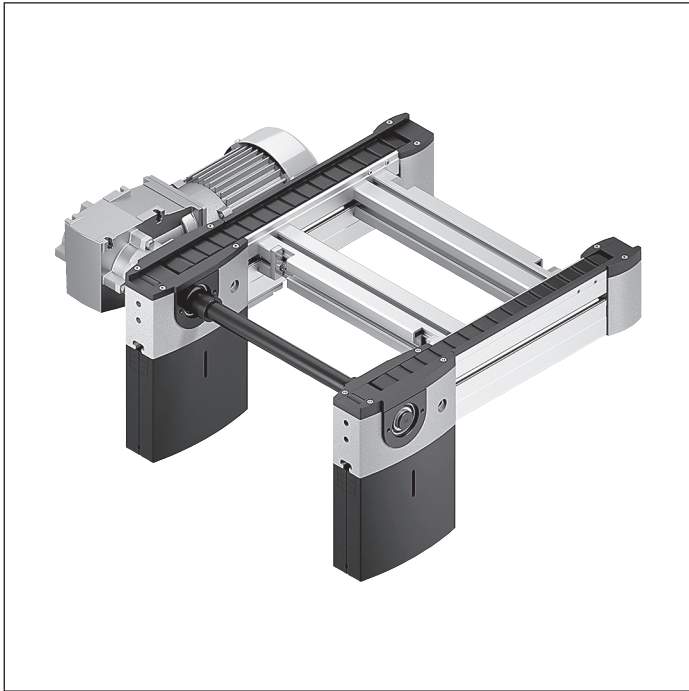
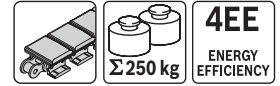
Material number		3842999917
Load		
Max. section load in accumulation operation	kg	100
Features		
ESD		yes, with KA = A*
Material specification		Section profile: Aluminum, natural; anodized Guide profile: Polyamide Glide profile: Polyamide
Max. operating temperature	T	°C
		+40
Dimensions		
Length	l	mm
		300 ... 6000

* Chain suitable for use in an EPA (KA = A)

Dimensions



BS 2/C-250 belt section



- ▶ Functional operation conveyor complete with drive
- ▶ Longitudinal conveying of the workpiece pallet on conveyor sections of up to 6000 mm
- ▶ Transverse conveying between parallel conveyor sections in conjunction with lift transverse units
- ▶ Conveyor medium: plastic flat top chain (with KA = A suitable for use in an EPA)
- ▶ Motor mounting right or left
- ▶ Motor connection: optionally with cable/plug or terminal box
- ▶ Special models on request
- ▶ Reversible operation not permitted
- ▶ Use with medium accumulation loads
- ▶ The LU 2 automatic lubrication unit is highly recommended

The belt section is a ready for operation conveyor section with own drive for the transportation of workpiece pallets in the longitudinal direction or for the transverse conveying

of the workpiece pallet between parallel conveyor sections in connection with two HQ 2 lift transverse units.

Accessories

Recommended accessories

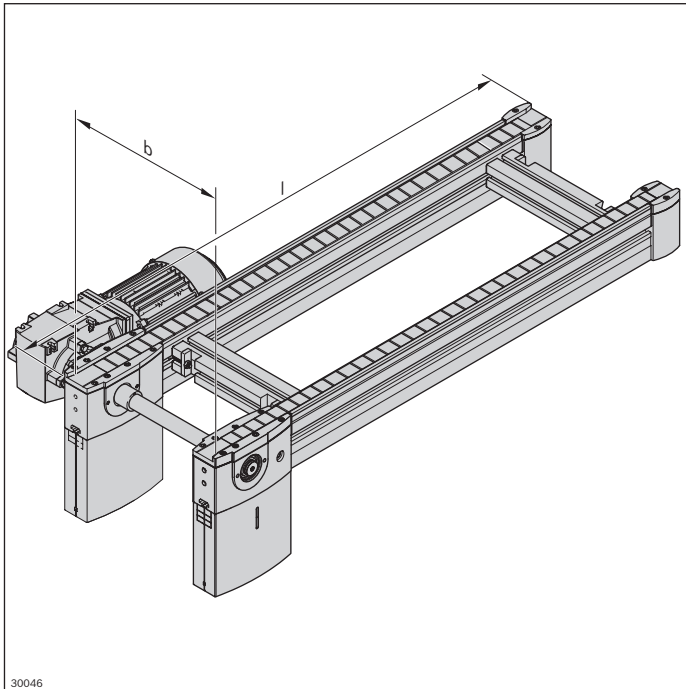
- ▶ Connection kits, see page 3-236
- ▶ SZ 2 leg sets, see page 6-2
- ▶ LU 2 automatic lubrication unit, see p. 3-84

Delivery notes

Condition on delivery

- ▶ Fully assembled

Ordering information



Material number		3842999985
b (mm)	Track width in direction of transport	160; 240; 320; 400; 480; 640; 800; 1040; 1200
l (mm)	Length	300 ... 6000
v_N (m/min)	Nominal speed	0 ¹⁾ ; 6; 9; 12; 15; 18
U (V)	Voltage	See motor data, p. 11-24ff
f (Hz)	Frequency	See motor data, p. 11-24ff
AT	Motor connection S = cable/plug K = terminal box	S; K
MA	Motor mounting ²⁾ R = right L = left	R; L
KA	Chain version Chain in standard version (KA = N) Chain suitable for use in an EPA (KA = A)	N; A

¹⁾ $v_N = 0$: without motor or gear

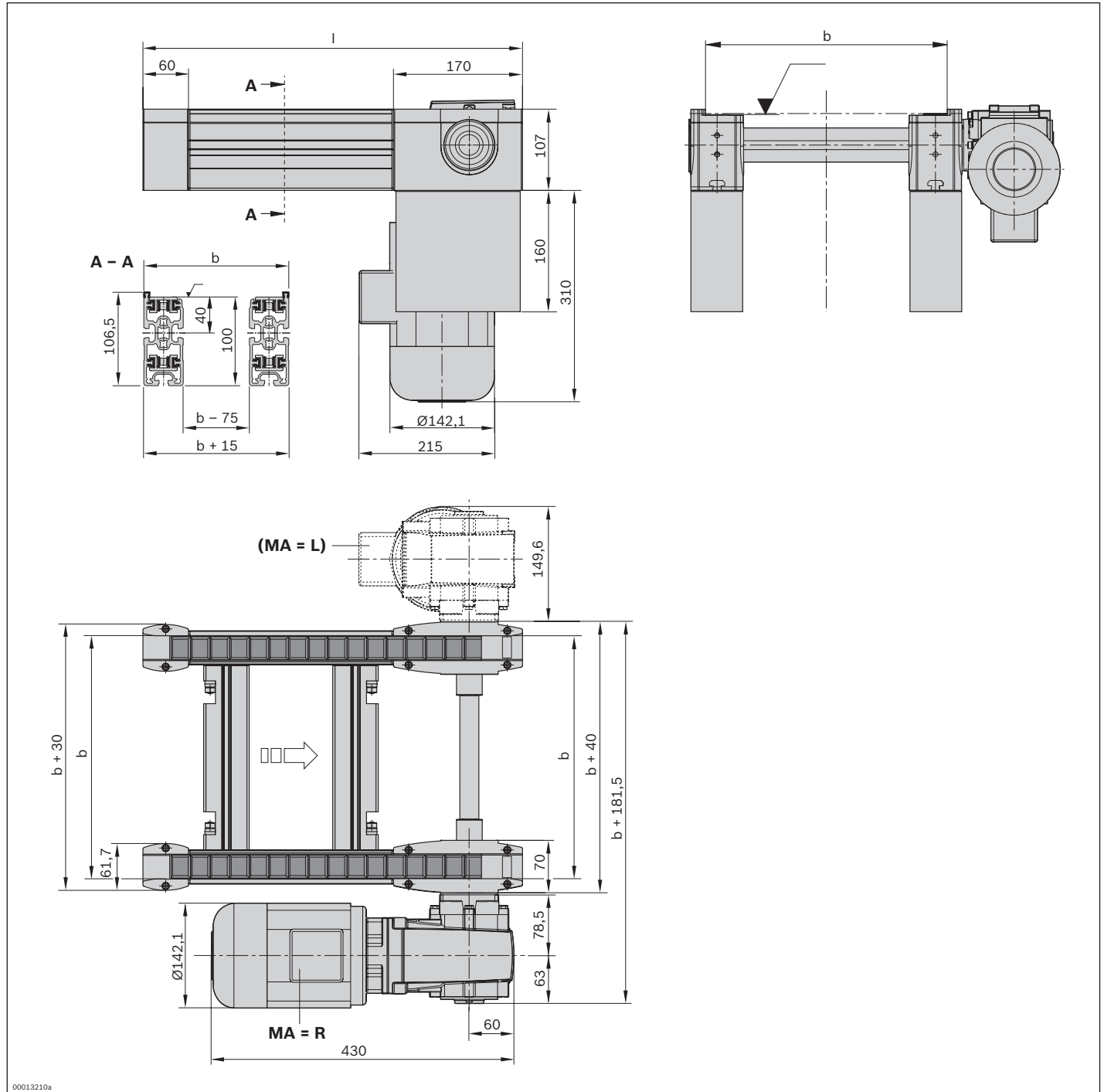
²⁾ Geometry does not permit MA = M

Technical data

Material number		3842999985
Load		
Max. section load in accumulation operation	kg	250
Features		
ESD		yes, with KA = A*
Material specification		Section profile: Aluminum, natural; anodized Guide profile: Polyamide Glide profile: Polyamide
Max. operating temperature	T	°C
		+40
Dimensions		
Length	l	mm
		300 ... 6000

* Chain suitable for use in an EPA (KA = A)

Dimensions



00013210a

BS 2/C-H belt section



- ▶ Functional operation conveyor complete with drive
- ▶ Sturdy design for especially heavy-duty systems
- ▶ Longitudinal conveying of the workpiece pallet on conveyor sections of 6000 mm
- ▶ Transverse conveying between parallel conveyor sections in conjunction with lift transverse units
- ▶ Conveyor medium: plastic flat top chain (with KA = A suitable for use in an EPA)
- ▶ Motor mounting right, left or central
- ▶ Motor connection: optionally with cable/plug or terminal box
- ▶ Special models on request
- ▶ Stainless steel workpiece pallet lateral guide
- ▶ Reversible operation not permitted
- ▶ Profile width: 50 mm
- ▶ Use with high accumulation loads
- ▶ The LU 2 automatic lubrication unit is highly recommended

The belt section is a ready for operation conveyor section with own drive for the transportation of workpiece pallets in the longitudinal direction or for the transverse conveying

of the workpiece pallet between parallel conveyor sections in connection with two HQ 2 lift transverse units.

Accessories

Recommended accessories

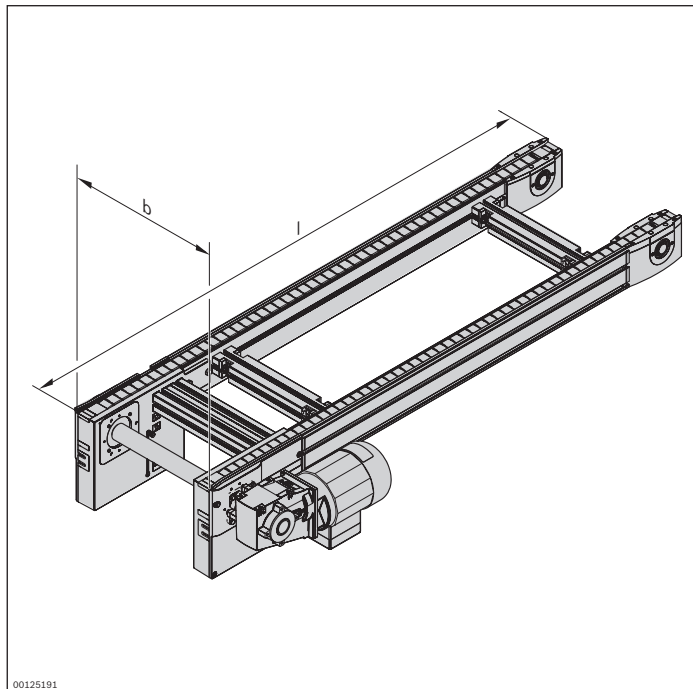
- ▶ Connection kits, see page 3-236
- ▶ SZ 2/...-H leg sets, see p. 6-2
- ▶ LU 2 automatic lubrication unit, see p. 3-84

Delivery notes

Condition on delivery

- ▶ Fully assembled

Ordering information



Material number		3842998239
b (mm)	Track width in direction of transport	400 ... 1200
l (mm)	Length	650 ... 6000
v_N (m/min)	Nominal speed	0 ¹⁾ ; 6; 9; 12; 15; 18 ²⁾
U (V)	Voltage	See motor data, p. 11-24ff
f (Hz)	Frequency	See motor data, p. 11-24ff
AT	Motor connection S = cable/plug K = terminal box	S; K
MA	Motor mounting R = right L = left M = center	R; L; M
KA	Chain version Chain in standard version (KA = N) Chain suitable for use in an EPA (KA = A)	N; A
GP	Glide profile Corrosion-resistant steel (GP = 1) Plastic (GP = 0)	0; 1

¹⁾ $v_N = 0$: without motor or gear

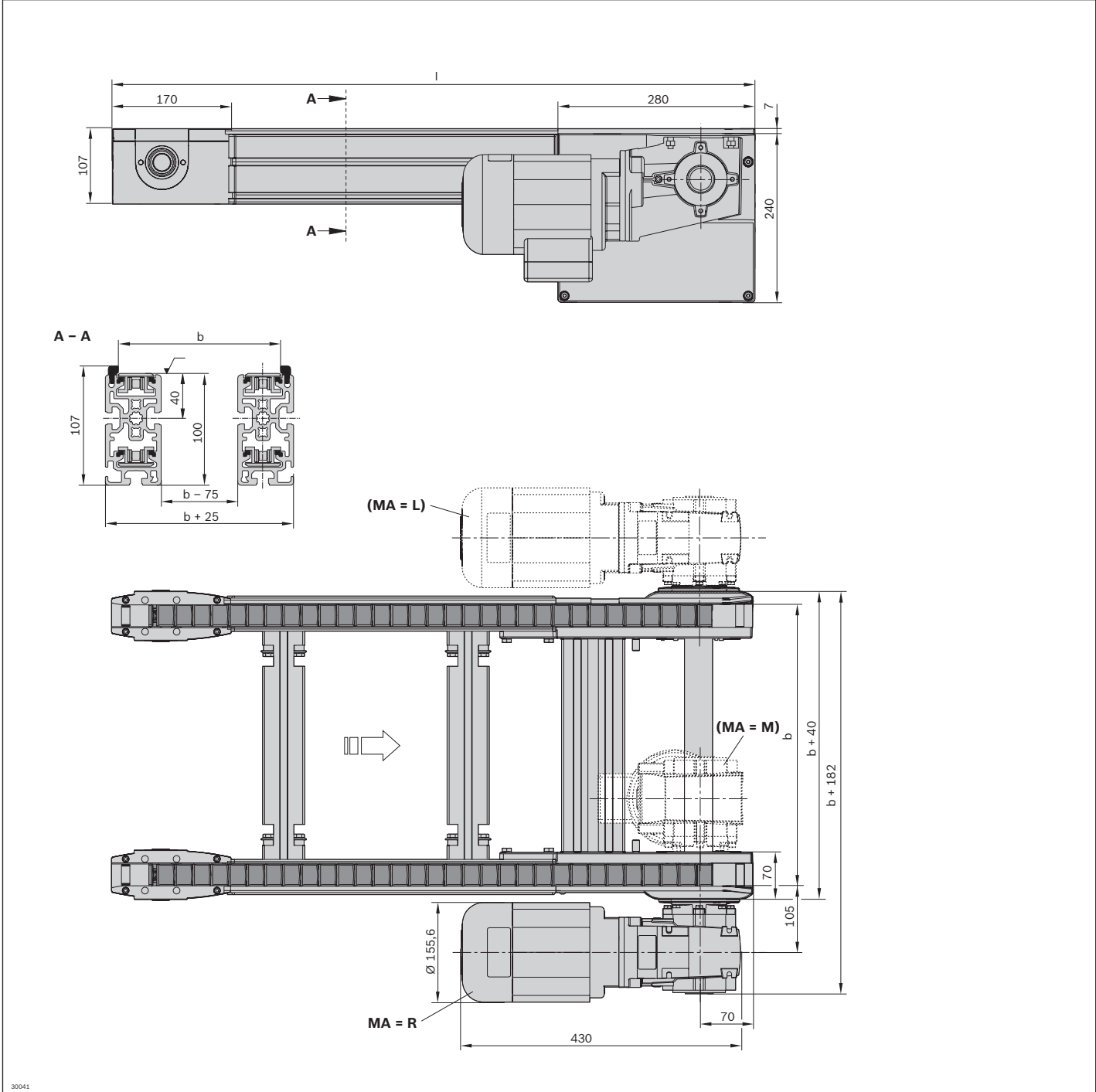
²⁾ Not possible if $f = 60$ Hz

Technical data

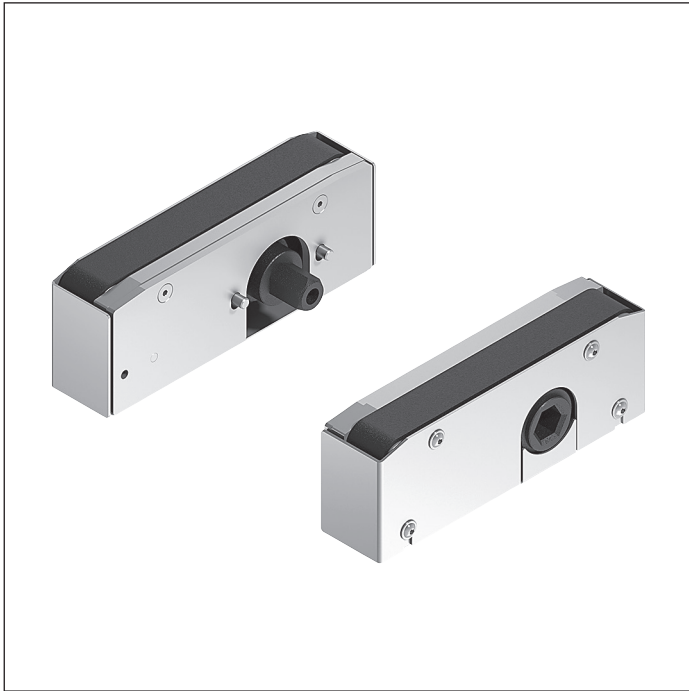
Material number		3842998239
Load		
Max. section load in accumulation operation	kg	400
Features		
ESD		yes, with KA = A*
Material specification		Section profile: Aluminum, natural; anodized Lateral guide: Stainless steel glide profile: Steel/plastic; corrosion-resistant
Dimensions		
Length	l	mm
		650 ... 6000

* Chain suitable for use in an EPA (KA = A)

Dimensions



BS 2/C+R connection belt



- Conveyor medium: Toothed belt (suitable for use in an EPA)

The head-to-head connection of the drive and return heads results in short, non-driven sections. The connection belt is

used to bridge these > 180 mm conveyor trenches by using short $l_{WT} < 320$ mm workpiece pallets.

Delivery notes

Condition on delivery

- Fully assembled

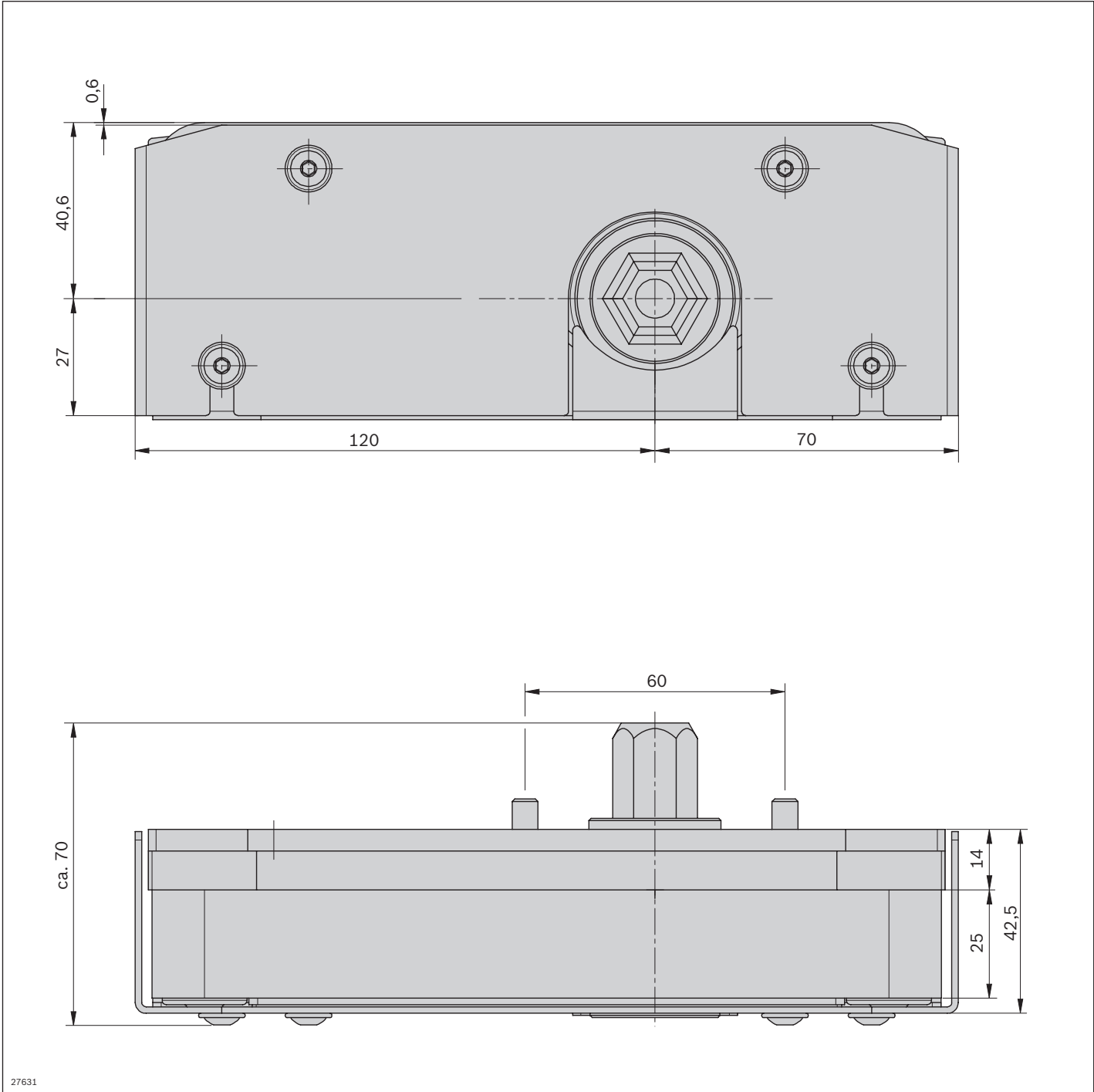
Ordering information

Product designation	Material number
Connection belt, left	3842528480
Connection belt, right	3842539096

Technical data

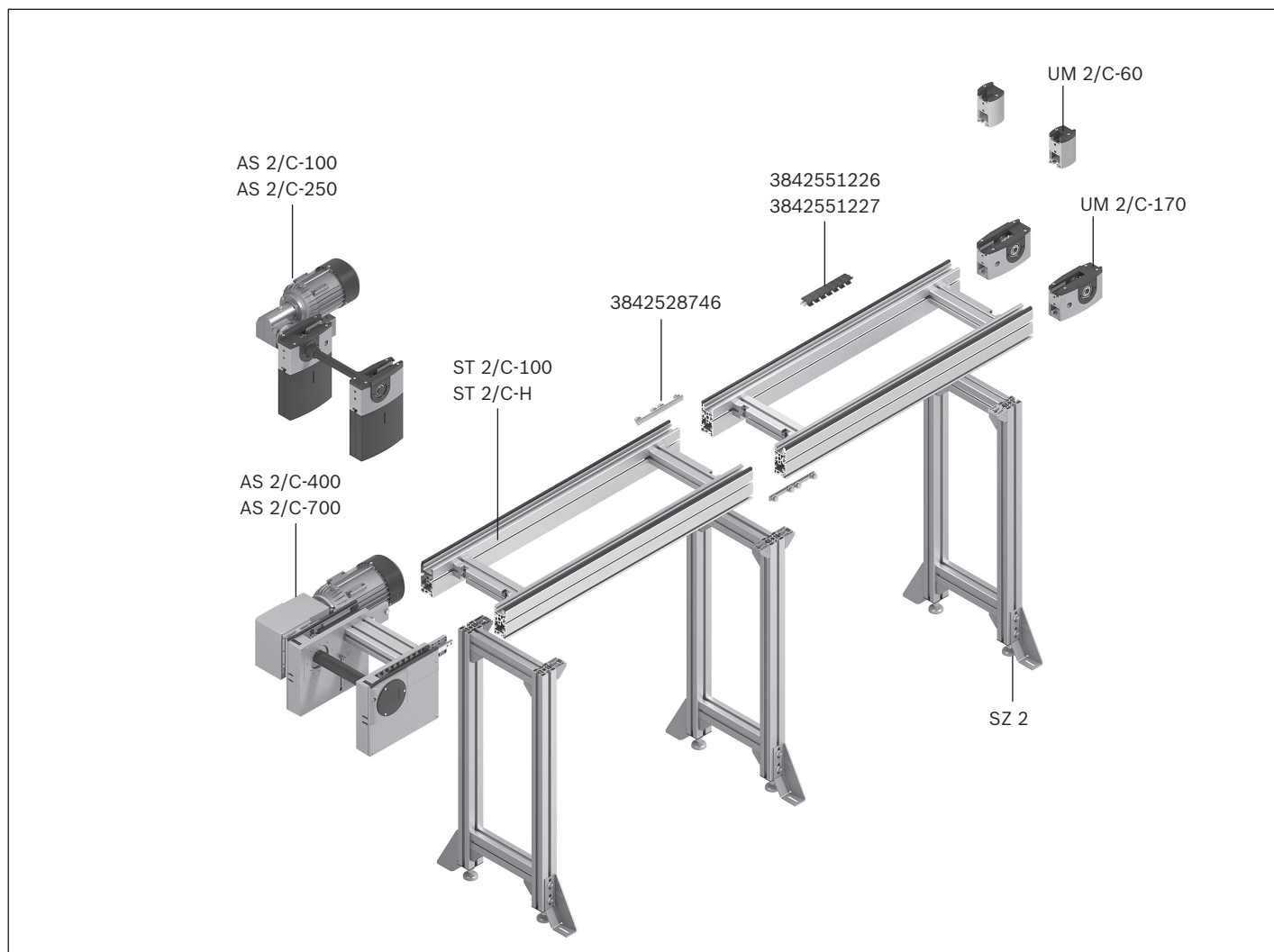
Material number	3842528480	3842539096
Features		
ESD	Yes	Yes

Dimensions



27631

Conveyor units Parts for flat top chain conveyor medium

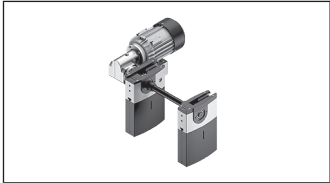


A conveyor unit is a complete unit used for linear conveying of workpiece pallets. It consists of:

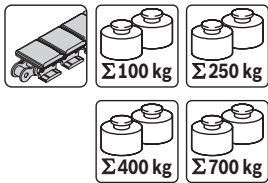
- ▶ AS 2/C drive module, see p. 3-68
- ▶ UM 2/C return unit, see p. 3-80
- ▶ ST 2/... section, see p. 3-86
- ▶ SZ 2/... leg sets, see p. 6-2
- ▶ QV 2 cross connector, see p. 3-108
- ▶ Flat top chain, see p. 3-116

The UM 2/C and AS 2/C-... may be set up right next to each other, which allows for conveyor unit combinations.

Drive modules for loads up to $m_G = 100$ kg; 250 kg; 400 kg; or up to $m_G = 700$ kg per conveyor unit.



AS 2/C drive module



3-68



UM 2/C return unit



3-80



ST 2/C section, components



3-86

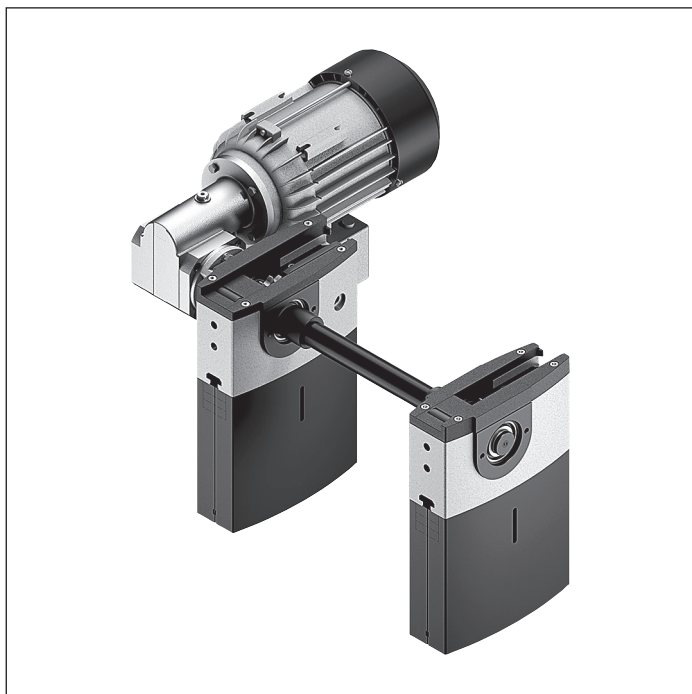


Flat top chain conveyor medium



3-116

AS 2/C-100 drive module



- ▶ Drive for conveyor unit self-assembly
- ▶ Conveyor medium: flat top chain (with KA = A suitable for use in an EPA)
- ▶ Right, left or central motor mounting (central from track width of 240 mm)
- ▶ Motor connection: optionally with cable/plug or terminal box
- ▶ Special models on request
- ▶ Reversible operation not permitted
- ▶ Use with medium accumulation loads
- ▶ The LU 2 automatic lubrication unit is highly recommended

The AS 2/C-... drive module drives the flat top chain conveyor medium in self-built conveyor section elements

with section, return unit and flat top chain.

Accessories

Recommended accessories

- ▶ Connection kits, see page 3-236
- ▶ LU 2 automatic lubrication unit, see p. 3-84

Delivery notes

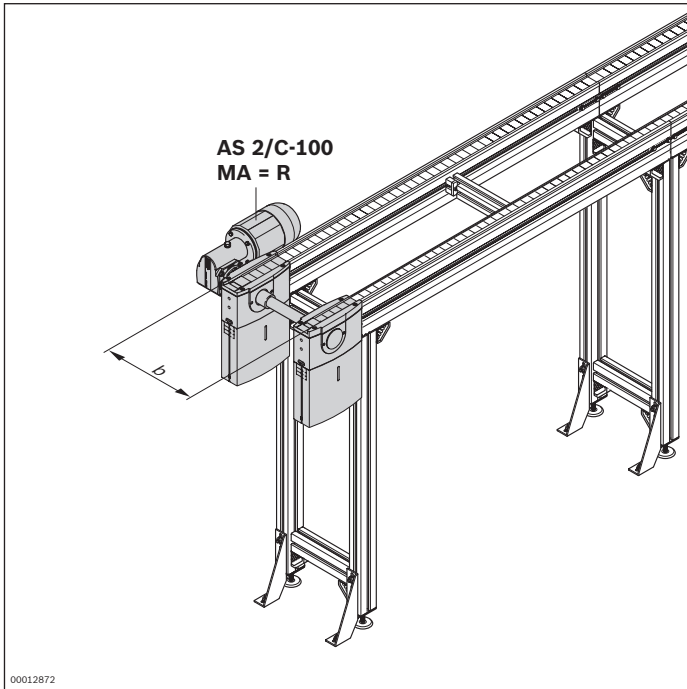
Scope of delivery

- ▶ Includes fastening material to mount on the ST 2 conveyor section, as well as to mount on an adjacent return unit.

Condition on delivery

- ▶ Fully assembled

Ordering information



Material number		3842998053
b (mm)	Track width in direction of transport	160; 240; 320; 400; 480; 640; 800; 1040; 1200 160 ... 1200 ¹⁾
v _N (m/min)	Nominal speed	0 ²⁾ ; 6; 9; 12; 15; 18
U (V)	Voltage	See motor data, p. 11-24ff
f (Hz)	Frequency	See motor data, p. 11-24ff
AT	Motor connection S = cable/plug K = terminal box	S; K
MA	Motor mounting R = right L = left M = center	R; L; M ³⁾

¹⁾ Individual width variants available

²⁾ v_N = 0: without motor or gear

³⁾ MA = M only when b ≥ 240 mm

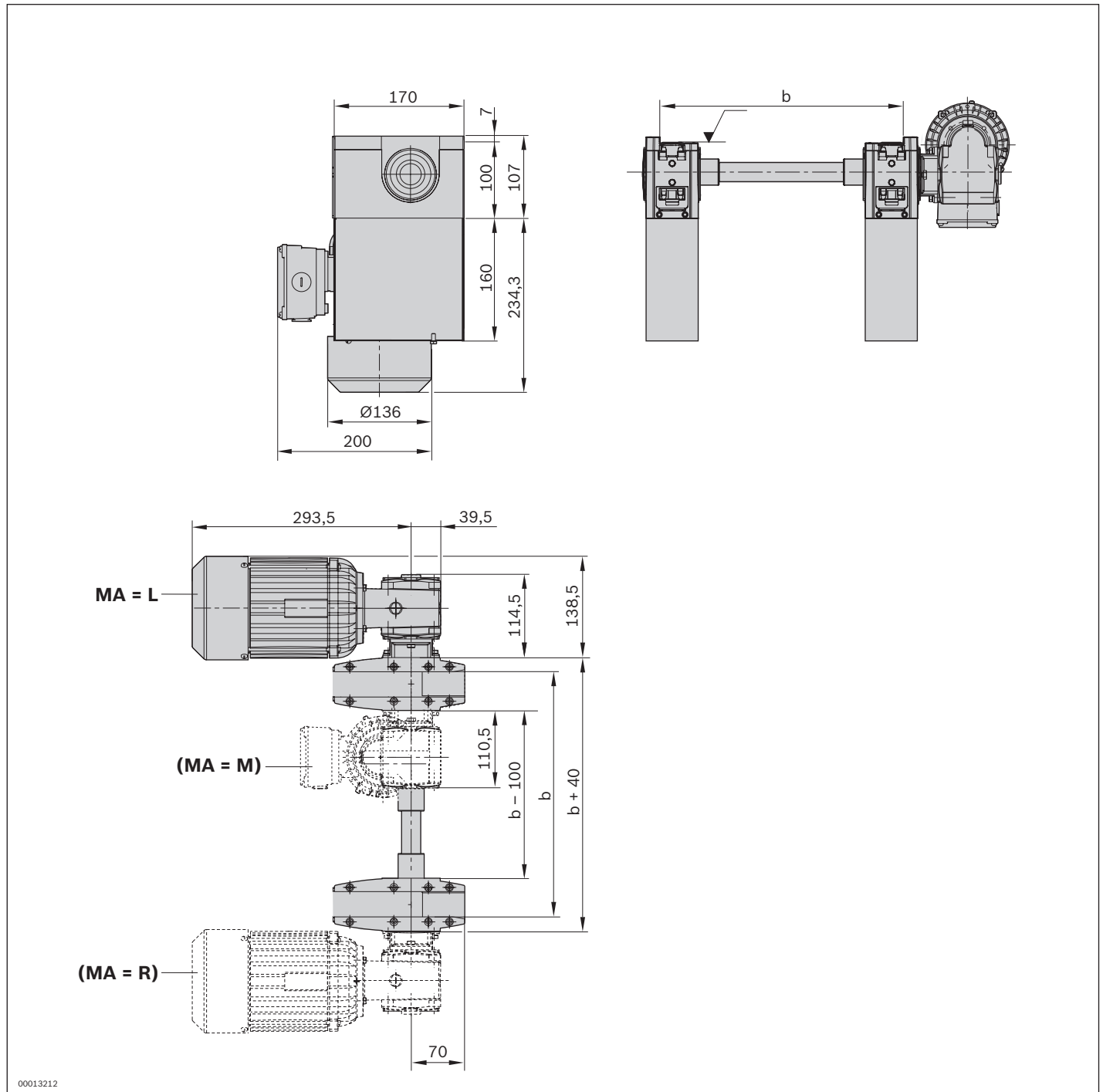
Technical data

Material number		3842998053
Load		
Max. section load in accumulation operation	kg	100
Features		
ESD		yes, with KA = A [*]
Additional information		
Required conveyor media length** l _{AS}	mm	475

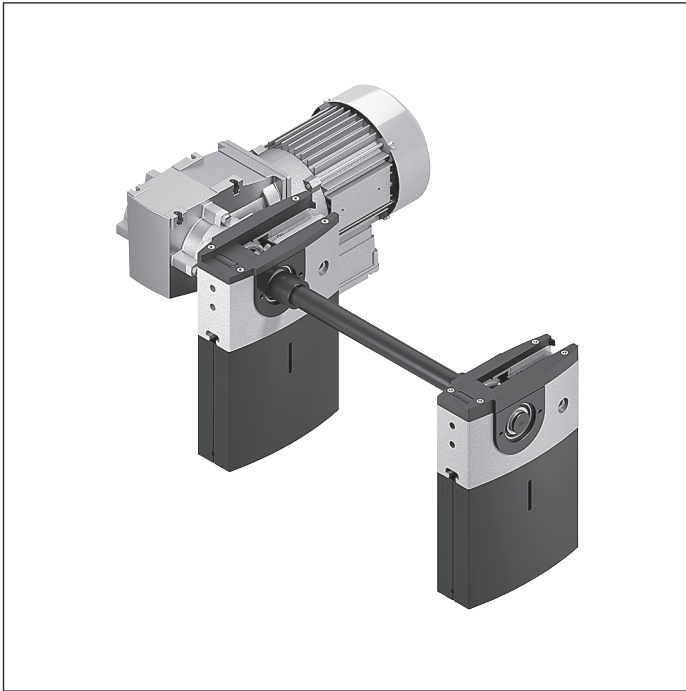
^{*} Chain suitable for use in an EPA (KA = A)

** Formula for calculating the conveyor medium, see p. 3-117

Dimensions



AS 2/C-250 drive module



The AS 2/C-... drive module drives the flat top chain conveyor medium in self-built conveyor section elements

Accessories

Recommended accessories

- ▶ Connection kits, see page 3-236
- ▶ LU 2 automatic lubrication unit, see p. 3-84

Delivery notes

Scope of delivery

- ▶ Includes fastening material to mount on the ST 2 conveyor section, as well as to mount on an adjacent return unit.

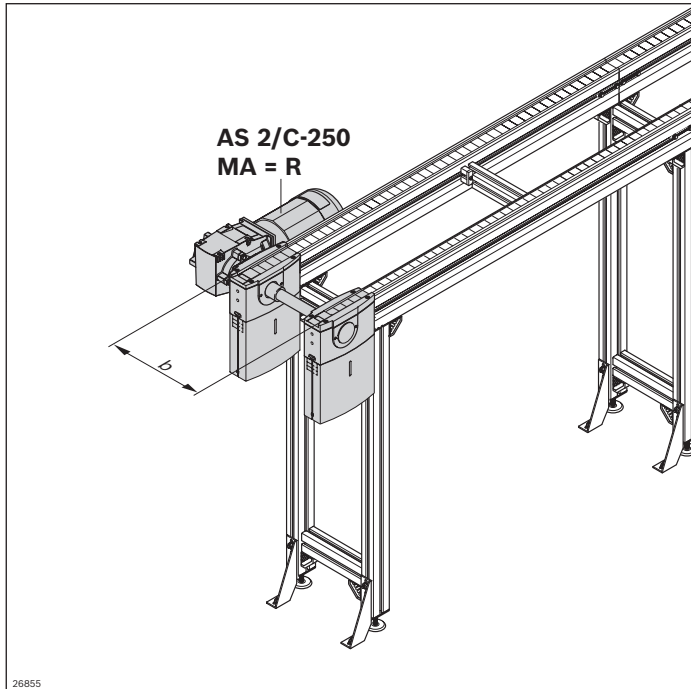
- ▶ Drive for conveyor unit self-assembly
- ▶ Conveyor medium: flat top chain (with KA = A suitable for use in an EPA)
- ▶ Motor mounting right or left
- ▶ Motor connection: optionally with cable/plug or terminal box
- ▶ Special models on request
- ▶ Reversible operation not permitted
- ▶ Use with medium accumulation loads
- ▶ The LU 2 automatic lubrication unit is highly recommended

with section, return unit and flat top chain.

Condition on delivery

- ▶ Fully assembled

Ordering information



Material number		3842998087
b (mm)	Track width in direction of transport	160; 240; 320; 400; 480; 640; 800; 1040; 1200 160 ... 1200 ¹⁾
v _N (m/min)	Nominal speed	0 ²⁾ ; 6; 9; 12; 15; 18
U (V)	Voltage	See motor data, p. 11-24ff
f (Hz)	Frequency	See motor data, p. 11-24ff
AT	Motor connection S = cable/plug K = terminal box	S; K
MA	Motor mounting R = right L = left	R; L

¹⁾ Individual width variants available

²⁾ v_N = 0: without motor or gear

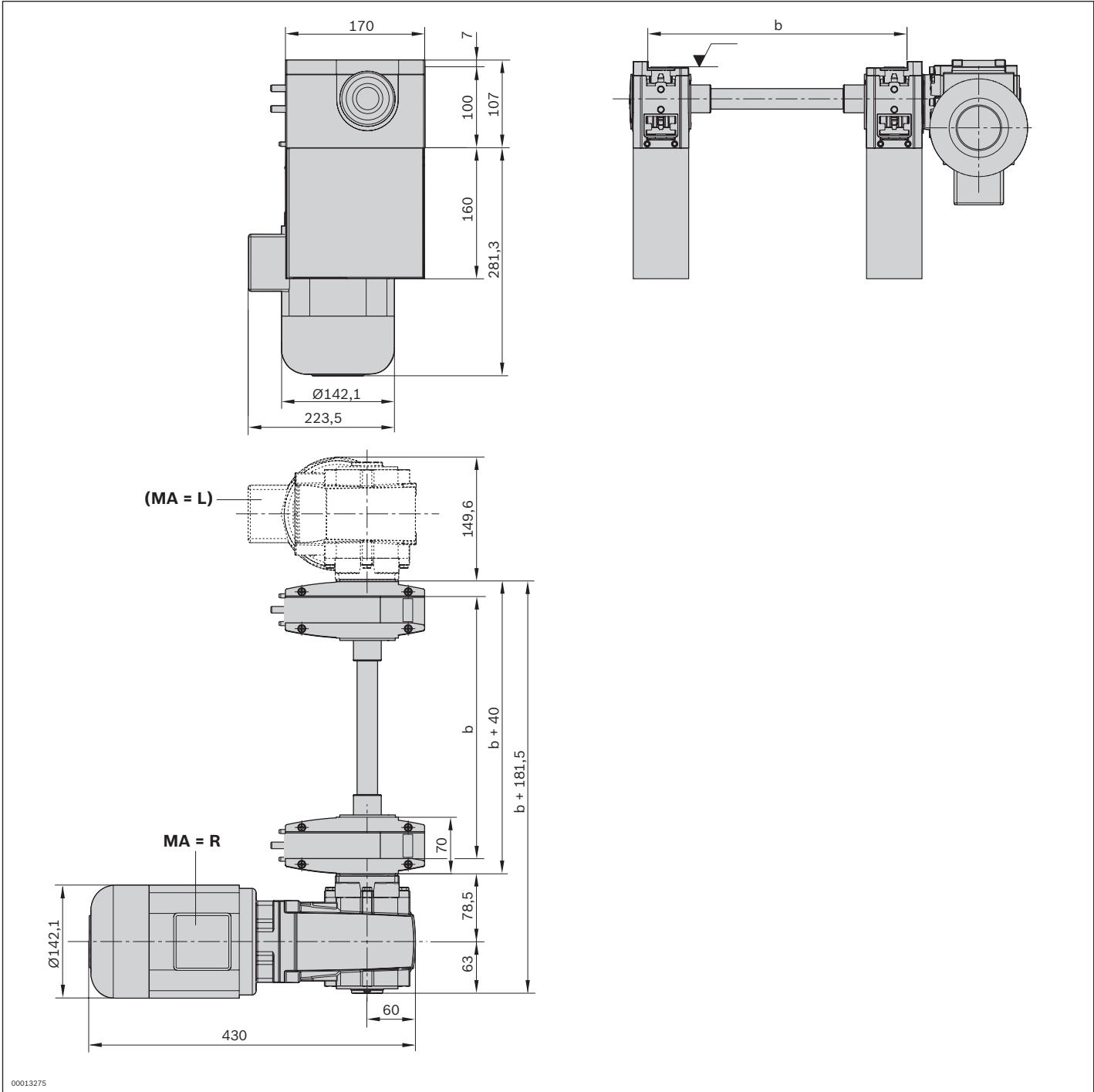
Technical data

Material number		3842998087
Load		
Max. section load in accumulation operation	kg	250
Features		
ESD		yes, with KA = A [*]
Additional information		
Required conveyor media length** l _{AS}	mm	475

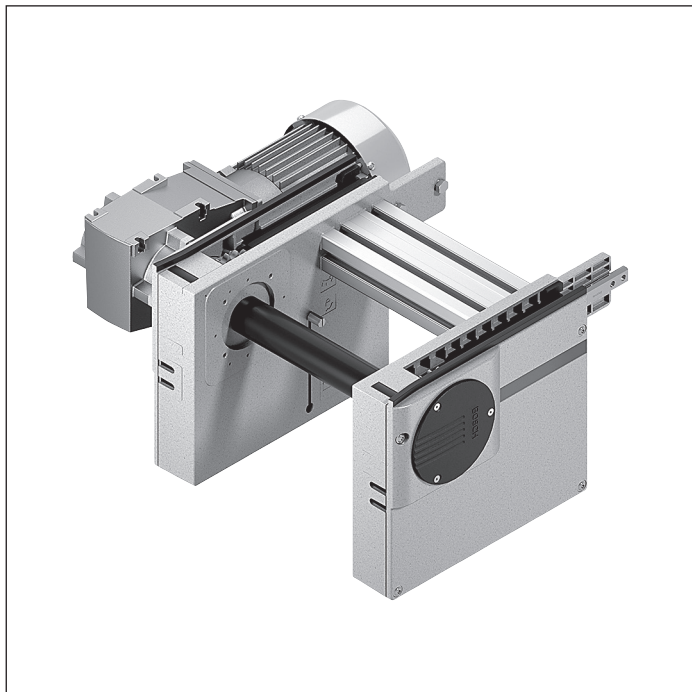
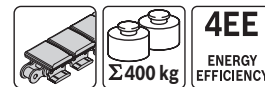
^{*} Chain suitable for use in an EPA (KA = A)

^{**} Formula for calculating the conveyor medium, see p. 3-117

Dimensions



AS 2/C-400 drive module



- ▶ Drive for conveyor unit self-assembly
- ▶ Conveyor medium: flat top chain (with KA = A suitable for use in an EPA)
- ▶ Right, left or central motor mounting (central from track width of 240 mm)
- ▶ Motor connection: optionally with cable/plug or terminal box
- ▶ Special models on request
- ▶ Reversible operation not permitted
- ▶ Use with medium accumulation loads
- ▶ The LU 2 automatic lubrication unit is highly recommended

The AS 2/C-... drive module drives the flat top chain conveyor medium in self-built conveyor section elements

with section, return unit and flat top chain.

Accessories

Recommended accessories

- ▶ Connection kits, see page 3-236
- ▶ LU 2 automatic lubrication unit, see p. 3-84

Delivery notes

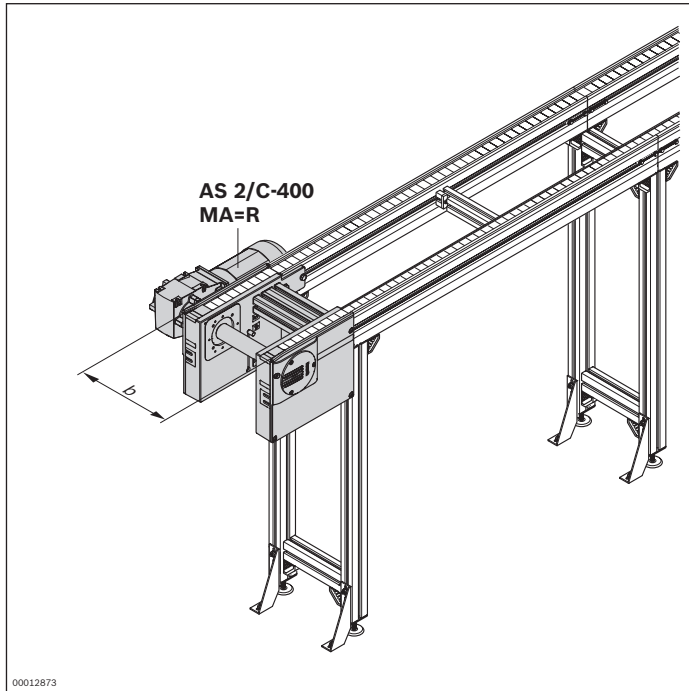
Scope of delivery

- ▶ Incl. all fastening material to mount on ST 2 conveyor section

Condition on delivery

- ▶ Fully assembled

Ordering information



Material number		3842998038
b (mm)	Track width in direction of transport	160; 240; 320; 400; 480; 640; 800; 1040; 1200 160 ... 1200 ¹
v _N (m/min)	Nominal speed	0 ² ; 6; 9; 12; 15; 18 ³
U (V)	Voltage	See motor data, p. 11-24ff
f (Hz)	Frequency	See motor data, p. 11-24ff
AT	Motor connection S = cable/plug K = terminal box	S; K
MA	Motor mounting R = right L = left M = center	R; L; M ⁴

- ¹⁾ Individual width variants available
- ²⁾ v_N = 0: without motor or gear
- ³⁾ Not possible if f = 60 Hz
- ⁴⁾ MA = M only when b ≥ 240 mm

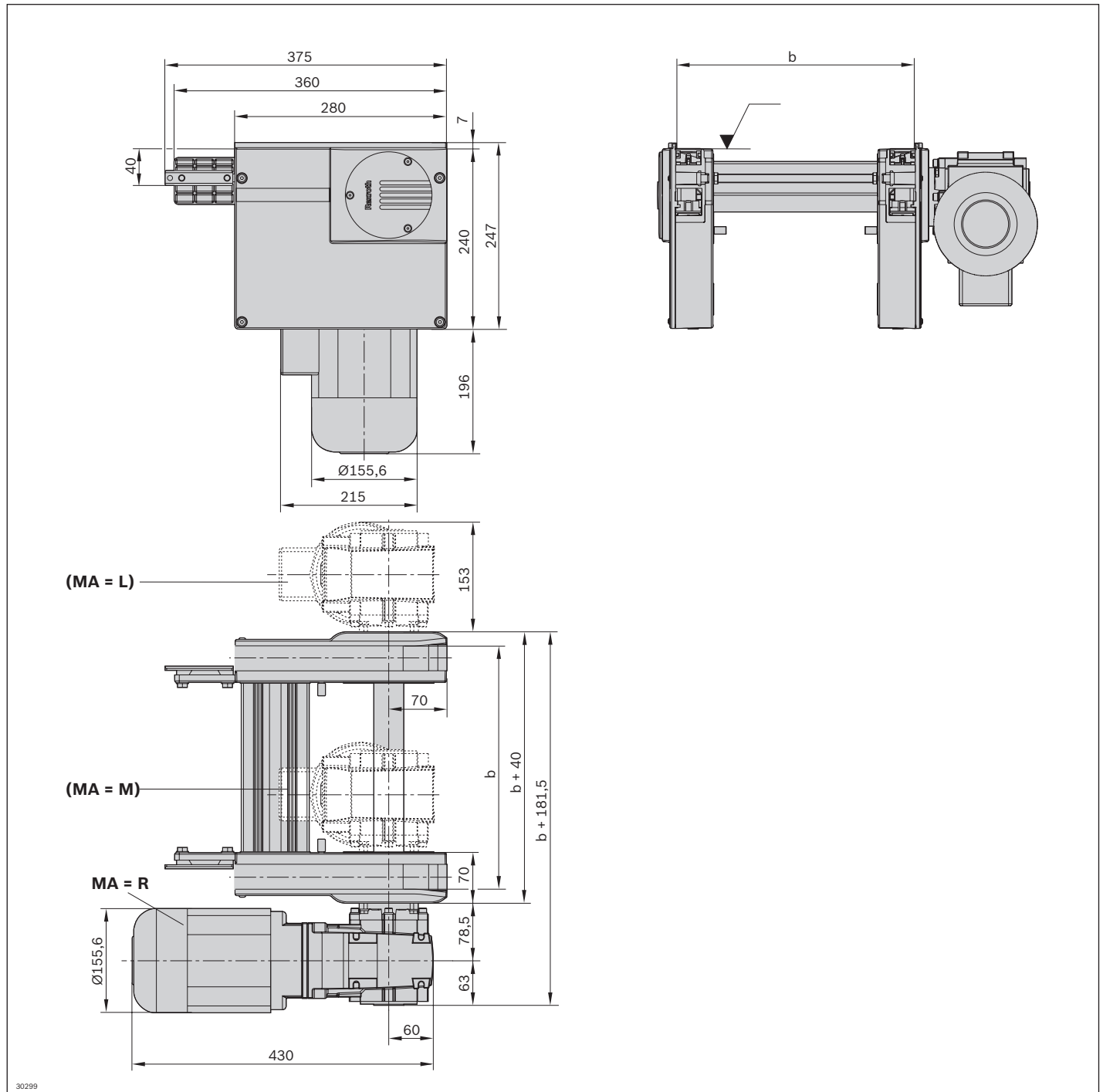
Technical data

Material number		3842998038
Load		
Max. section load in accumulation operation	kg	400
Features		
ESD		yes, with KA = A [*]
Additional information		
Required conveyor medium length**	l _{AS}	mm 625

^{*} Chain suitable for use in an EPA (KA = A)

** Formula for calculating the conveyor medium, see p. 3-117

Dimensions



AS 2/C-700 drive module



- ▶ Drive for conveyor unit self-assembly
- ▶ Conveyor medium: flat top chain (with KA = A suitable for use in an EPA)
- ▶ Right, left or central motor mounting (central from track width of 240 mm)
- ▶ Motor connection: optionally with cable/plug or terminal box
- ▶ Special models on request
- ▶ Reversible operation not permitted
- ▶ Use with high accumulation loads
- ▶ The LU 2 automatic lubrication unit is highly recommended

The AS 2/C-... drive module drives the flat top chain conveyor medium in self-built conveyor section elements

with section, return unit and flat top chain.

Accessories

Recommended accessories

- ▶ Connection kits, see page 3-236
- ▶ LU 2 automatic lubrication unit, see p. 3-84

Delivery notes

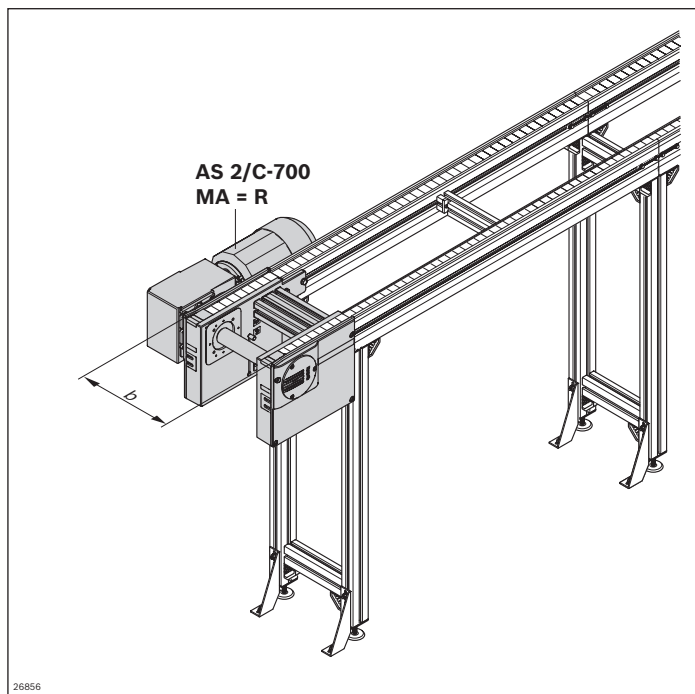
Scope of delivery

- ▶ Incl. all fastening material to mount on ST 2 conveyor section

Condition on delivery

- ▶ Fully assembled

Ordering information



Material number		3842998039
b (mm)	Track width in direction of transport	160; 240; 320; 400; 480; 640; 800; 1040; 1200 160 ... 1200 ¹
v _N (m/min)	Nominal speed	0 ² ; 6; 9; 12; 15; 18 ³
U (V)	Voltage	See motor data, p. 11-24ff
f (Hz)	Frequency	See motor data, p. 11-24ff
AT	Motor connection S = cable/plug K = terminal box	S; K
MA	Motor mounting R = right L = left M = center	R; L; M ⁴

¹) Individual width variants available

²) v_N = 0: without motor or gear

³) Reduced load to 600 kg

⁴) MA = M only when b ≥ 240 mm

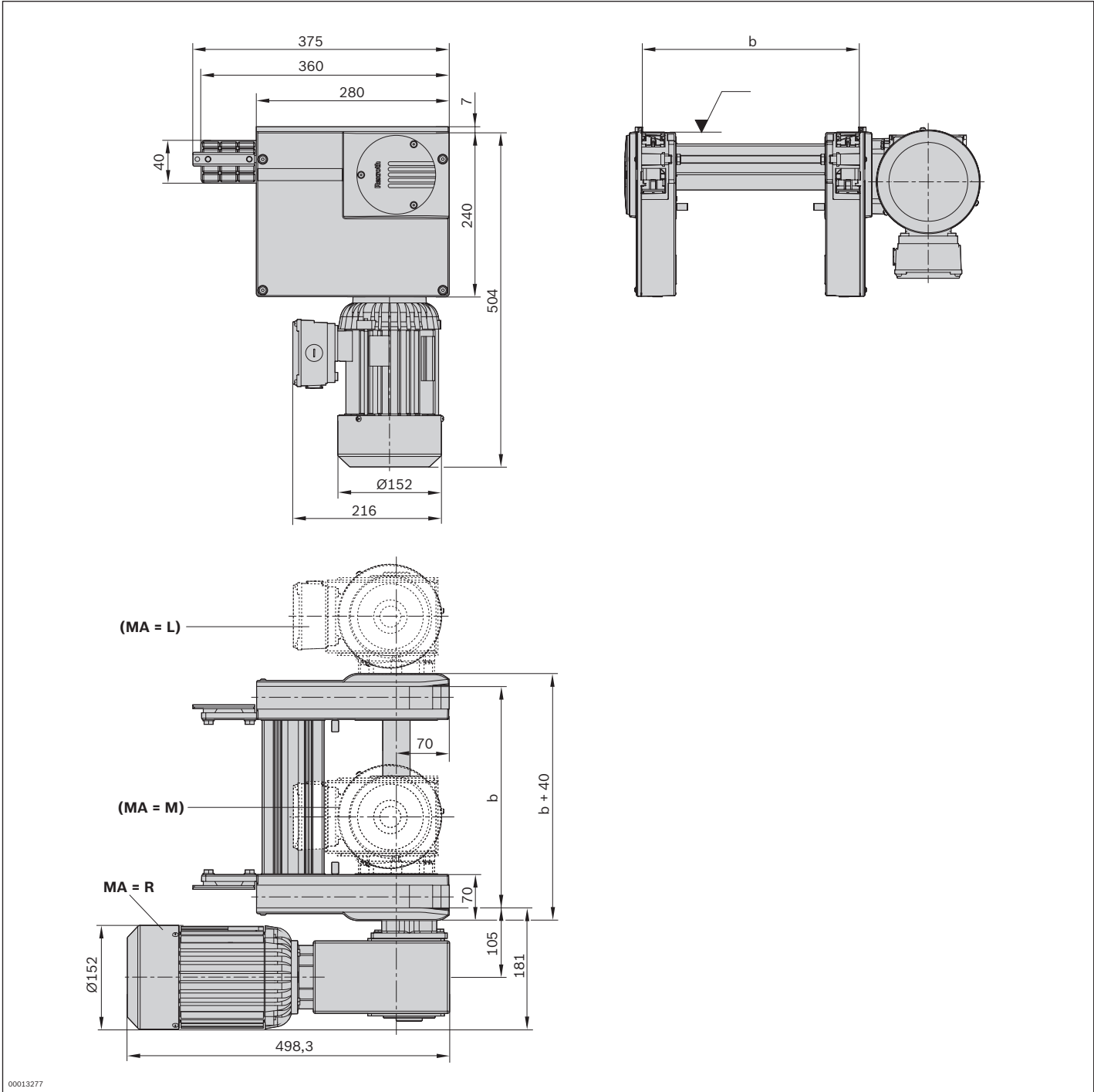
Technical data

Material number		3842998039
Load		
Max. section load in accumulation operation	kg	700
Features		
ESD		yes, with KA = A*
Additional information		
Required conveyor medium length**	l _{AS} mm	625

* Chain suitable for use in an EPA (KA = A)

** Formula for calculating the conveyor medium, see p. 3-117

Dimensions



UM 2/C-60 return unit



- ▶ Conveyor medium: flat top chain (suitable for use in an EPA)
- ▶ For use with all AS 2/C drive modules
- ▶ Version with sliding piece for return unit
- ▶ Recommended for sections up to $l = 6000$ mm

The return unit is used for constructing conveyor units. It guides the conveyor medium at the end of the conveyor unit back to the drive module.

Accessories

Required accessories

- ▶ Connection kits, see page 3-236

Delivery notes

Scope of delivery

- ▶ One pair of return heads
- ▶ Incl. all fastening material to mount on ST 2 conveyor section

Condition on delivery

- ▶ Fully assembled

Ordering information

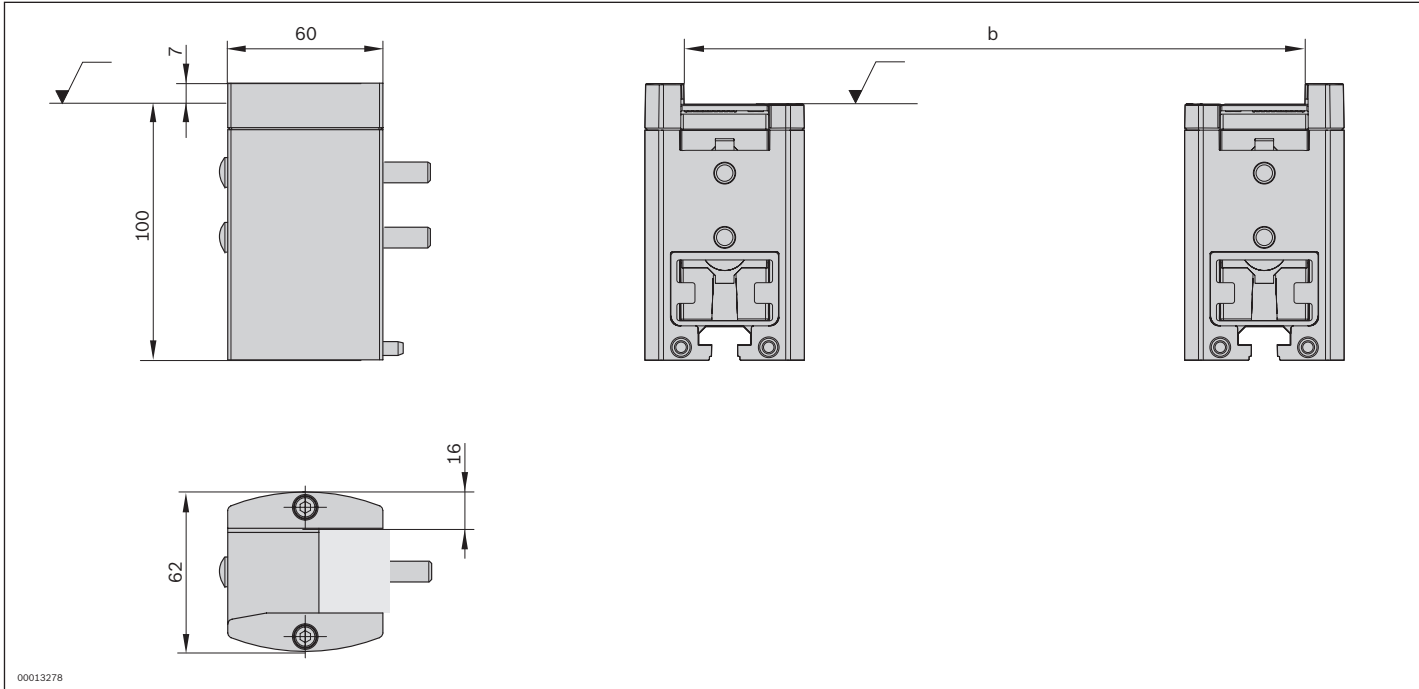
Product designation	Material number
UM 2/C-60 return unit	3842528802

Technical data

Material number	3842528802		
Features			
ESD	Yes		
Additional information			
Required conveyor medium length*	l_{UM}	mm	150

* Formula for calculating the conveyor medium, see p. 3-117

Dimensions



UM 2/C-170 return unit



- ▶ Conveyor medium: flat top chain (suitable for use in an EPA)
- ▶ For use with all AS 2/C drive modules
- ▶ Version with pinion for return unit
- ▶ Recommended for sections of $l > 6000$ mm

The return unit is used for constructing conveyor units. It guides the conveyor medium at the end of the conveyor unit back to the drive module.

Accessories

Required accessories

- ▶ Connection kits, see page 3-236

Delivery notes

Scope of delivery

- ▶ One pair of return heads
- ▶ Incl. all fastening material to mount on ST 2 conveyor section

Condition on delivery

- ▶ Fully assembled

Ordering information

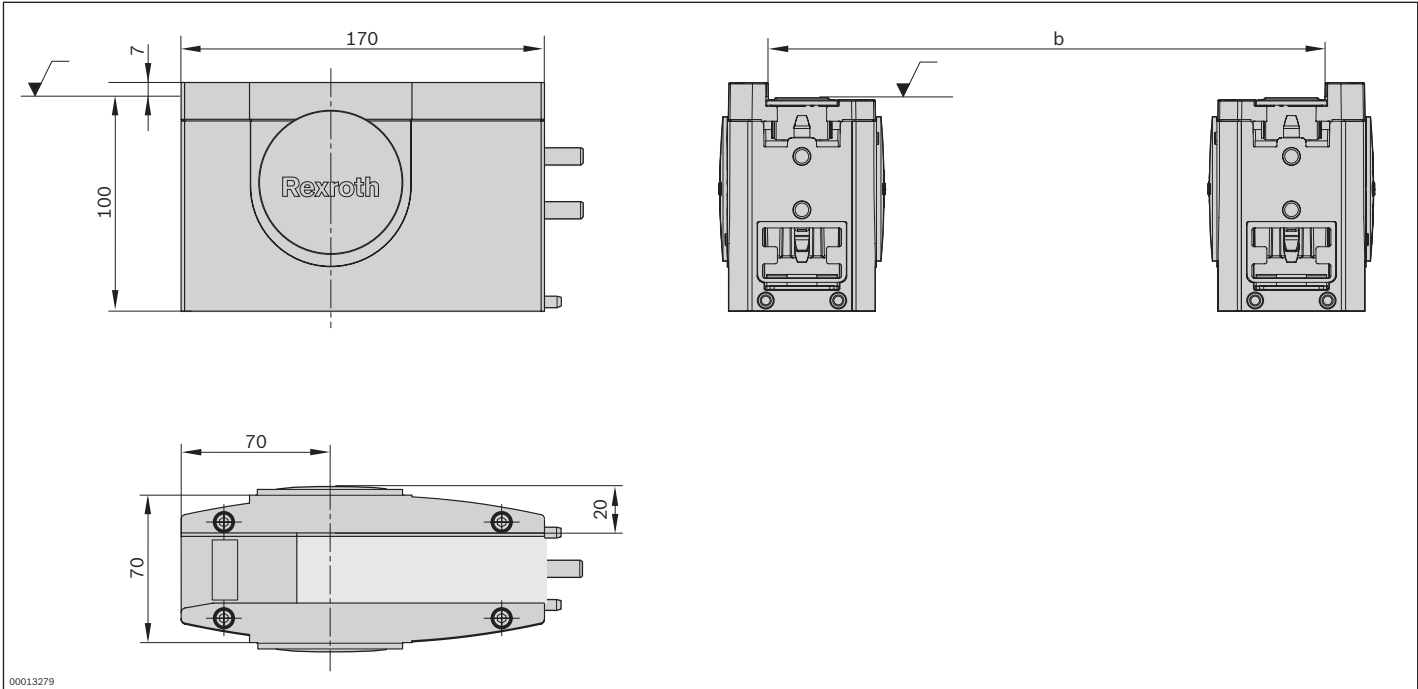
Product designation	Material number
UM 2/C-170 return unit	3842528806

Technical data

Material number	3842528806		
Features			
ESD	Yes		
Additional information			
Required conveyor medium length*	l_{UM}	mm	310

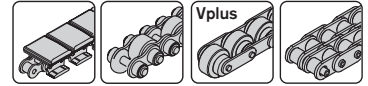
* Formula for calculating the conveyor medium, see p. 3-117

Dimensions



00013279

LU 2 automatic lubrication unit



- ▶ Modular design consisting of LU 2 automatic lubrication unit, LC 2 oil container and adapter set
- ▶ LU 2 automatic lubrication unit with drive, compressed air connection to drive module and fastening material
- ▶ LC 2 lubricant container with Structovis GHD from Klüber; contains: 0.25 l (must be ordered separately)
- ▶ Specific adapter sets with compatible lubrication pins for different drive modules
- ▶ Adjustment of lubrication amount to be distributed per metering process on the LU 2 automatic lubrication unit. The metering process is actuated by an external PLC.
- ▶ Designed for lubricating one belt section or conveyor unit respectively
- ▶ Use of the LU 2 automatic lubrication unit is highly recommended for flat top chains

Increasing the system service life through continuous and maintenance-free lubrication of flat top chains, accumulation roller chains, and duplex chains during operation.

For preventing dry running.

Accessories

Required accessories

- ▶ LC 2 lubricant container, see p. 3-85
- ▶ Adapter set, see p. 3-85

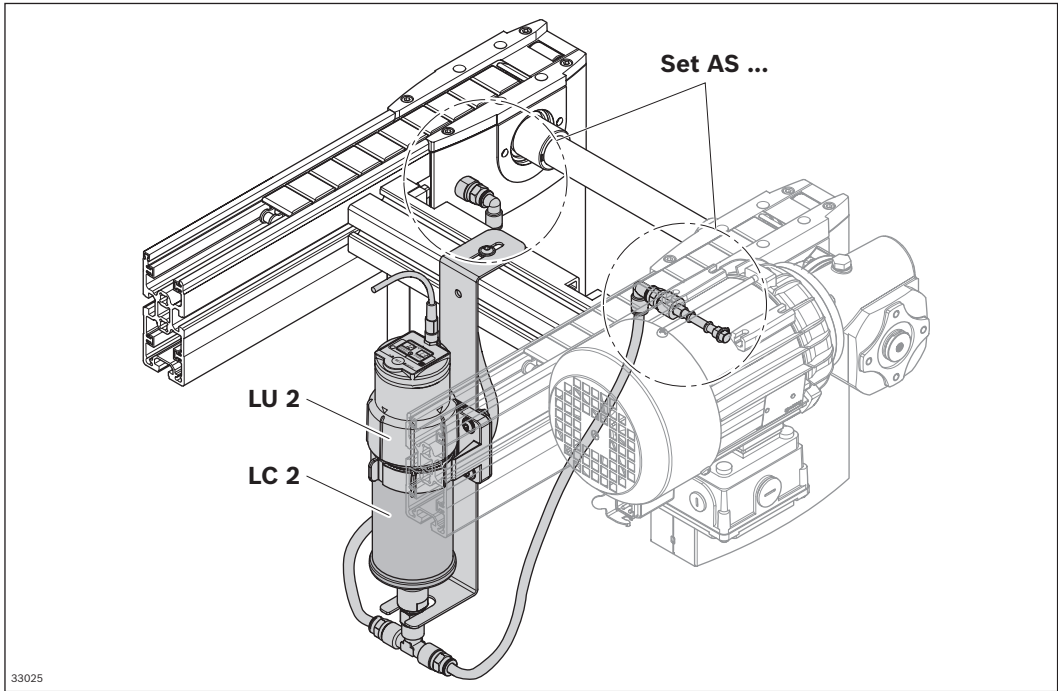
Delivery notes

Condition on delivery

- ▶ Not assembled, fastening material enclosed
- ▶ LC 2 lubricant container and adapter set as ordered

Suitable for use with all belt sections and conveyor units; lubrication unit on the drive module.

Reduction of lubricant consumption thanks to exact metering and pinpoint application to the chain links.



Ordering information

Product designation	Packaging unit	Material number
LU 2 automatic lubrication unit	1	3842543482
LC 2 lubricant container	4	3842543469

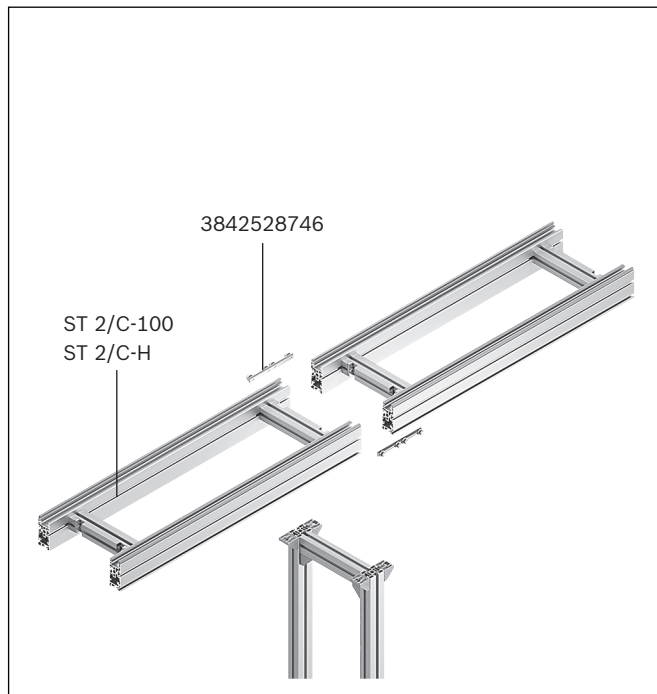
Product designation	Packaging unit	Material number
Adapter set for AS 2/C-100 AS 2/C-250 BS 2/C	1	3842543483
Adapter set for AS 2/C-400 (assembly on UM2/C-170 when b = 160 mm) AS 2/C-700 (assembly on UM2/C-170 when b = 160 mm) BS 2/C-H (assembly on UM2/C-170, UM 2/R-170 when b = 160 mm)	1	3842543484
Adapter set for AS 2/R-300 AS 2/R-700 BS 2/R BS 2/R-H with RV = 1*	1	3842543485
Adapter set for AS 2/R-1200 (assembly on UM2/R-170 when b = 160 mm) AS 2/R-2200 (assembly on UM2/R-170 when b = 160 mm) BS 2/R-H with RV = 0 (assembly on UM2/C-170, UM 2/R-170 when b = 160 mm)	1	3842543486
Adapter set for AS 2/R-V-1200 (assembly on UM2/R-170 when b = 160 mm) AS 2/R-V-2200 (assembly on UM2/R-170 when b = 160 mm) BS 2/R-V-1200 (assembly on UM2/R-170 when b = 160 mm)	1	3842543487
Adapter set for HQ 2/U-H	1	3842548578

* Assembly on UM return unit

Technical data

Material number	3842543482		
Features			
ESD			Yes
Max. operating temperature	T	°C	+40

Section, section profiles



Sections can be individually configured for special requirements by selecting various section, glide, and guide profiles.

Depending on the load spectrum of the conveyor medium, stainless steel or plastic glide profiles can be inserted in the section profile. Use of steel glide profiles increases resistance to wear and temperature. This opens up new areas of application for the TS *2plus*.

The proven SP 2/C-100 profiles are primarily suitable for medium loads in simple system layouts.

Especially suited for high strains and loads, the new, sturdy SP 2/C-H section profiles have been developed for flat top chains. In addition to a more robust profile cross section and improvements to details (integrated cable duct), the use of stainless steel in the guide profile enhances the system. An adapter plate not only enables visually attractive mounting of the SP 2/C-H section profiles on the drive modules in the TS *2plus*, it also securely keeps the glide profiles (sliding guides) from shifting.

ST 2/C-100 section



3



- ▶ For conveyor unit self-assembly
- ▶ For use in conjunction with all AS 2/C drive modules and UM 2/C return units
- ▶ Conveyor medium: plastic flat top chain
- ▶ GP 2 plastic glide profile
- ▶ Pre-assembled unit for quick setup

The section is used to construct conveyor units with plastic flat top chains in connection with the AS 2/C drive modules

and UM 2/C return units

Accessories

Required accessories

- ▶ Cross connector, see p. 3-108

Delivery notes

Scope of delivery

- ▶ 2x SP 2/C section profiles with assembled FP 2 and GP 2 guide profiles and glide profiles
- ▶ 8x blocking bolts

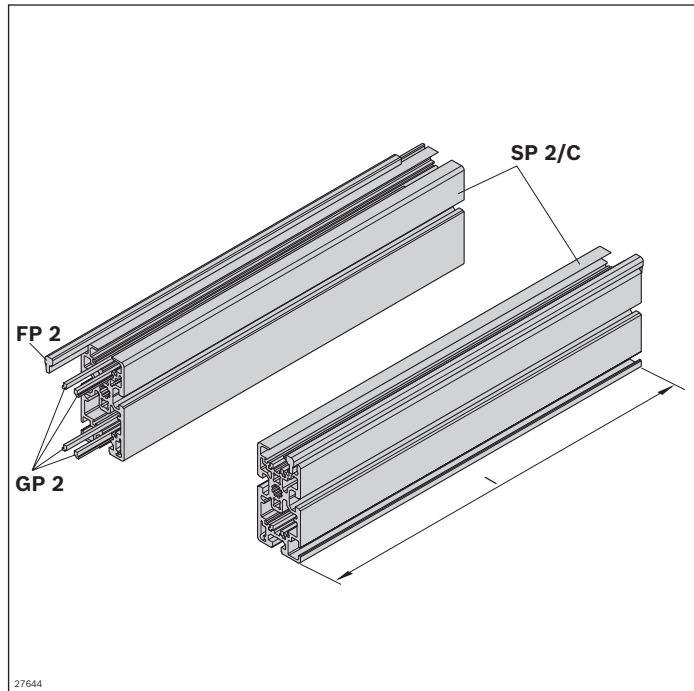
Recommended accessories

- ▶ SZ 2 leg sets, see page 6-2
- ▶ Profile connector, see p. 3-107
- ▶ Cross connector, see p. 3-108

Condition on delivery

- ▶ Fully assembled

Ordering information

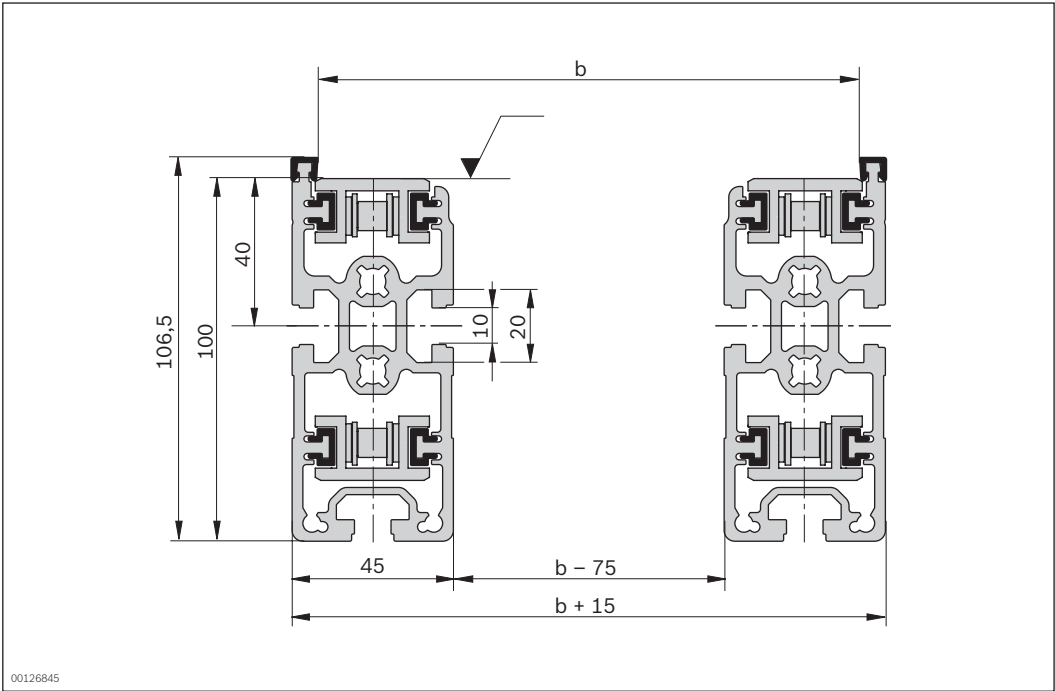


Material number	3842994890	
l (mm)	Length	60 ... 6000

Technical data

Material number	3842994890		
Features			
Material specification	Section profile: Aluminum; anodized FP 2 guide profile: polyamide GP 2 glide profile: polyamide		
Max. operating temperature	T	°C	+40
Dimensions			
Length	l	mm	60 ... 6000

Dimensions



Blocking bolts



- ▶ To prevent the plastic glide profiles from moving in a longitudinal direction
- ▶ Installation at the beginning of the section in the conveying direction
- ▶ Included in delivery of all ST 2/C sections

Note: Not required for all ST 2/C-H sections.

Blocking bolts prevent the plastic glide profiles from moving in a longitudinal direction.

Accessories

Recommended accessories

- ▶ Drilling template (3842538972, see p.) 3-118

Delivery notes

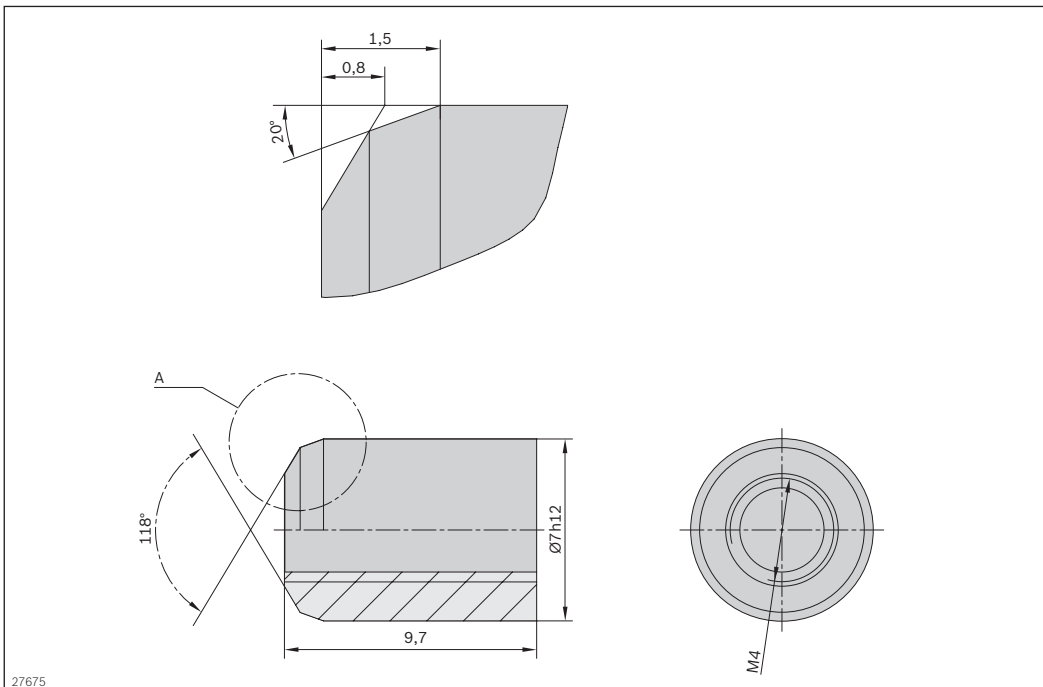
Scope of delivery

- ▶ Set consisting of 8x blocking bolts

Ordering information

Product designation	Packaging unit	Material number
Blocking bolts	Set	3842537353

Dimensions



27675

ST 2/C-H section



3



- ▶ For conveyor unit self-assembly
- ▶ For use with all AS 2/C drive modules and UM 2/C return units
- ▶ Section profile (50 mm wide) in especially sturdy design for section loads of up to 30% higher
- ▶ Conveyor medium: plastic flat top chain
- ▶ Optional steel or plastic GP 2 glide profiles

The section is used to construct heavy-duty conveyor units with plastic flat top chains in connection with the AS 2/C

drive modules and UM 2/C return units

Accessories

Required accessories

- ▶ ST 2/C-H adapter plate kit, see p. 3-102
- ▶ If GP = 0, then adapter plates are to be fitted between each section joint.

Delivery notes

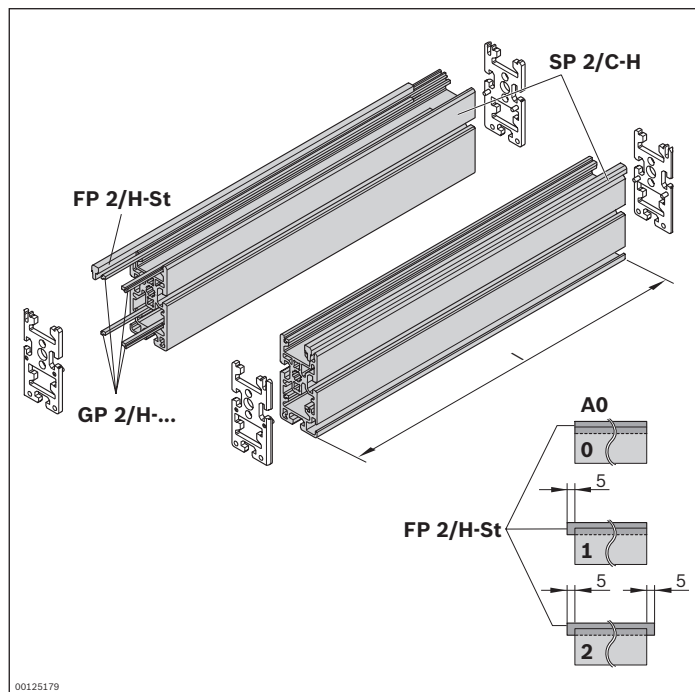
Scope of delivery

- ▶ 2x SP 2/C-H section profiles with assembled FP 2/H-St and GP 2/H guide profiles and glide profiles

Recommended accessories

- ▶ SZ 2/... leg sets, see page 6-2
- ▶ Profile connector, see p. 3-107
- ▶ Cross connector, see p. 3-108
- ▶ Cover rail for cable duct, see p. 3-94

Ordering information

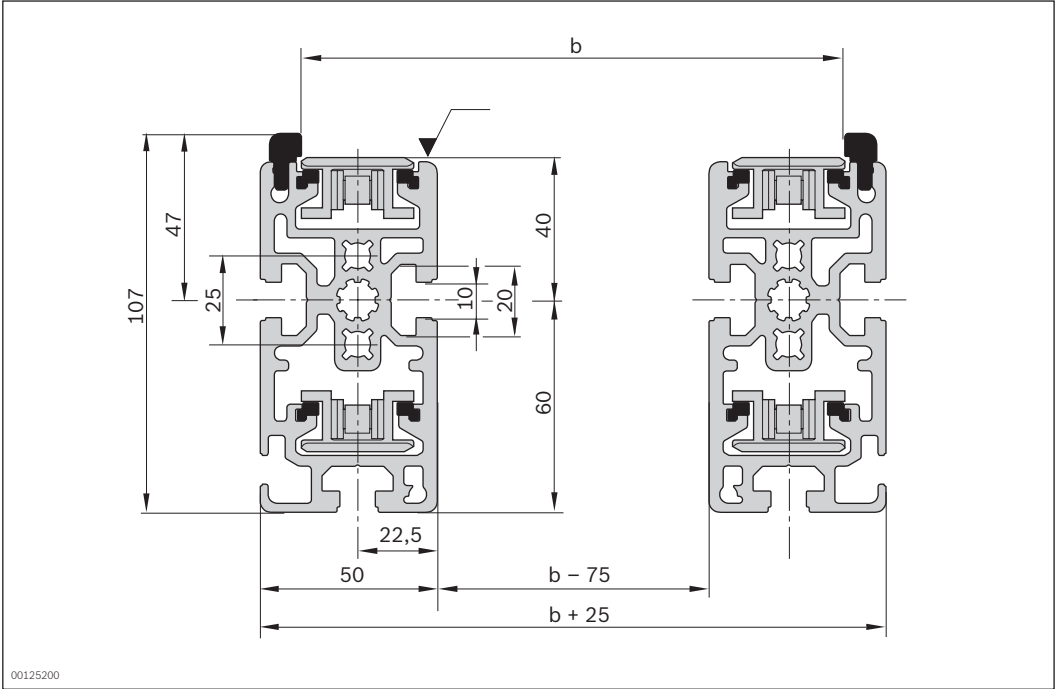


Material number		3842994973
l (mm)	Length	200 ... 6000
AO	Installation location Plastic glide profile AO = 2 Steel glide profile AO = 0; 1; 2	0; 1; 2
GP	Glide profile Corrosion-resistant steel (GP = 1) Plastic (GP = 0)	0; 1

Technical data

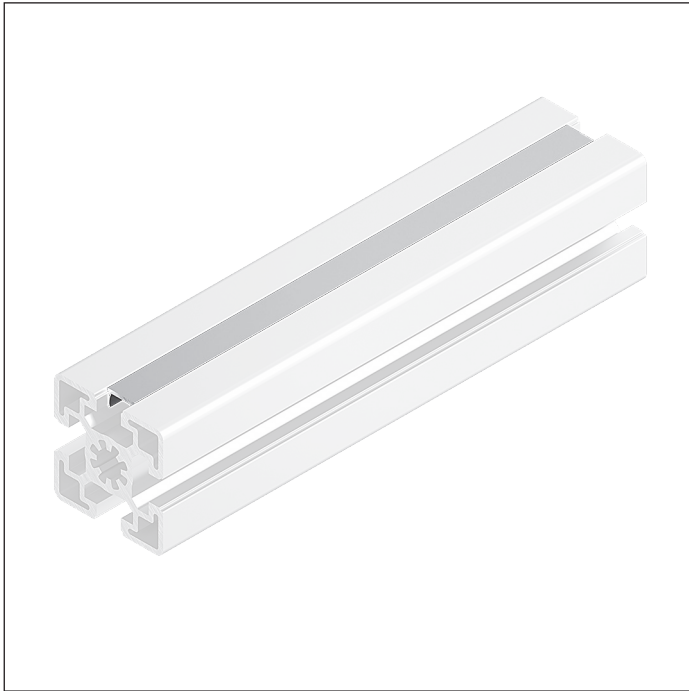
Material number		3842994973
Features		
Material specification		Section profile: Aluminum; anodized Guide profile: Steel; corrosion-resistant Glide profile: Plastic or steel; corrosion-resistant
Max. operating temperature	T	°C +40
Dimensions		
Length	l	mm 200 ... 6000

Dimensions



00125200

Cover rail for cable duct



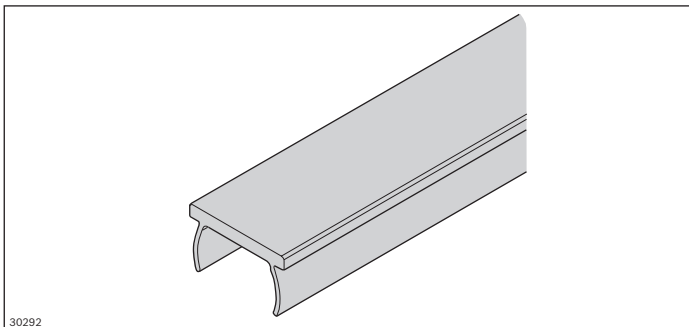
- ▶ To prevent dirt from entering the profile slot
- ▶ For fixing cables in position
- ▶ Flush with profile

Ordering information

Product designation	Packaging unit	Material number
Cover rail for cable duct	10	3842523258

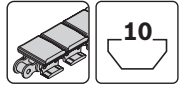
Technical data

Material number	3842523258		
Features			
Material specification	Aluminum, natural; anodized		
Dimensions			
Length	l	mm	2000



30292

SP 2/C-100 section profile



3



- ▶ For conveyor unit self-assembly for profile construction heights of 100 mm
- ▶ For use in conjunction with all AS 2/C drive modules, UM 2/C return units, FP 2 guide profiles and GP 2 glide profiles
- ▶ Longitudinal grooves for easy mounting
- ▶ For conveyor units with a height to conveying level of 100 mm

The section profile is used to set up conveyor units with the flat top chain conveyor medium. Additional blocking bolts

prevent the glide profiles from moving in a longitudinal direction.

Accessories

Required accessories

- ▶ GP 2 glide profile, see p. 3-97
- ▶ FP 2 guide profile, see p. 3-97
- ▶ Blocking bolts, see p. 3-90

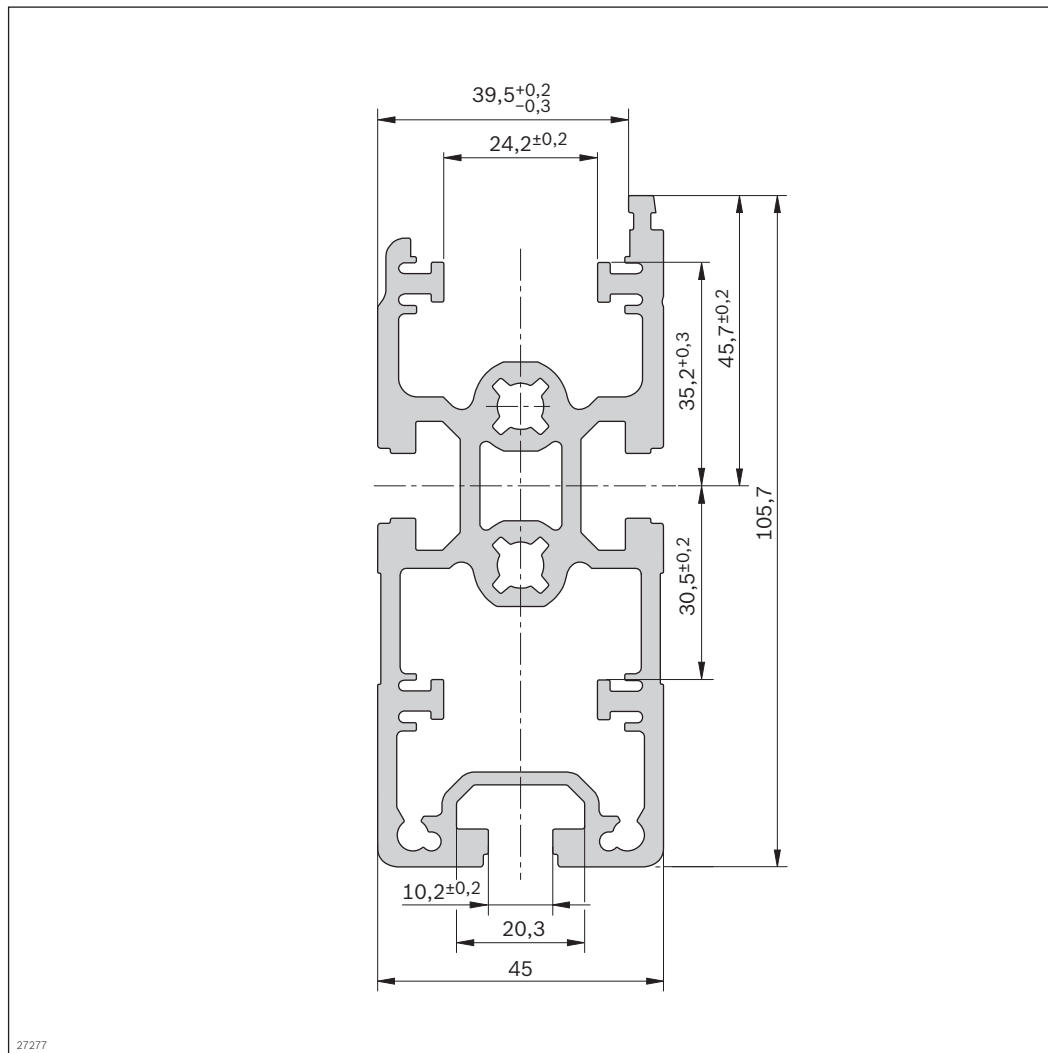
Ordering information

Product designation	l (mm)	Delivery unit	Material number
SP 2/C-100 16 x 6070 mm section profile	6070	16	3842532609

Technical data

Material number		3842532609	
Load			
Moment of inertia	I_x	cm ⁴	128.0
	I_y	cm ⁴	37.0
Moment of resistance	W_x	cm ³	24.6
	W_y	cm ³	16.4
Features			
Material specification			Aluminum; anodized
Mass	m	kg/m	4.0
Dimensions			
Length	l	mm	6070
Profile surface	A	cm ²	15.0

Dimensions

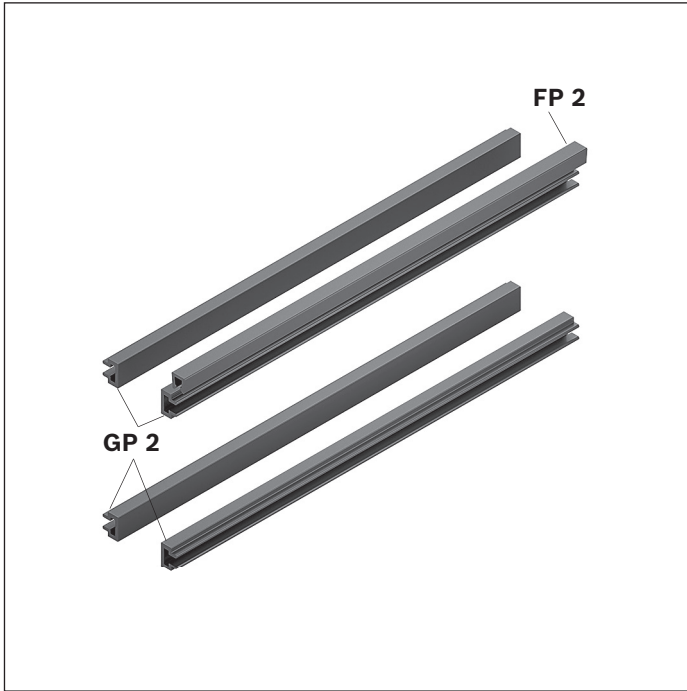


27277



FP 2 guide profile set, GP 2 glide profile

3



- ▶ For conveyor unit self-assembly
- ▶ Used in conjunction with ST 2/C section profiles, AS 2/C drive modules and UM 2 /C return units
- ▶ FP 2 guide profile for laterally guiding the workpiece pallet; slid onto the SP 2/C-100 section profile
- ▶ GP 2 glide profile for guiding the top flat chain; slid onto the SP 2/C-100 section profile

The guide profile is used for lateral guidance of the workpiece pallet. The glide profile is used to guide the flat top chain. Both profiles are pushed onto the section profile.

Additional blocking bolts prevent the glide profiles from moving in a longitudinal direction.

Accessories

Required accessories

- ▶ Blocking bolts, see p. 3-90

Delivery notes

Scope of delivery

- ▶ 16x FP 2 guide profile (L = 6000 mm)
- ▶ 64x GP 2 glide profiles (L = 6000 mm)

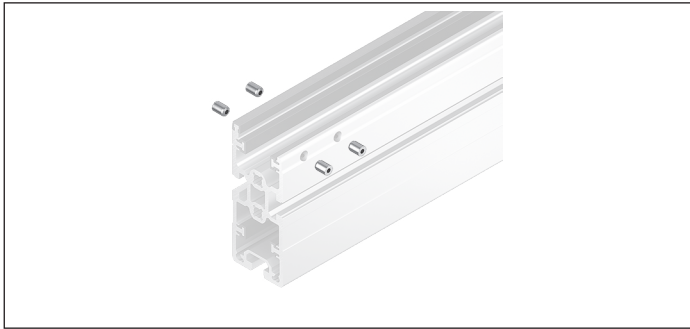
Ordering information

Product designation	l (mm)	Material number
FP 2 guide profile set, GP 2 glide profile	6000	3842529933

Technical data

Material number	3842529933		
Features			
ESD			Yes
Material specification			Guide profile: Plastic; PA (suitable for use in an EPA) Glide profile: Plastic; PA (suitable for use in an EPA)
Max. operating temperature	T	°C	+40
Dimensions			
FP 2 length	l	mm	6000
GP 2 length	l	mm	6000

Blocking bolts



- ▶ To prevent the plastic glide profiles from moving in a longitudinal direction
- ▶ Installation at the beginning of the section in the conveying direction
- ▶ Included in delivery of all ST 2/C-100 sections

Note: Not required for all ST 2/C-H sections.

Blocking bolts prevent the plastic glide profiles from moving in a longitudinal direction.

Accessories

Recommended accessories

- ▶ Drilling template (3842538972, see p.) 3-118

Delivery notes

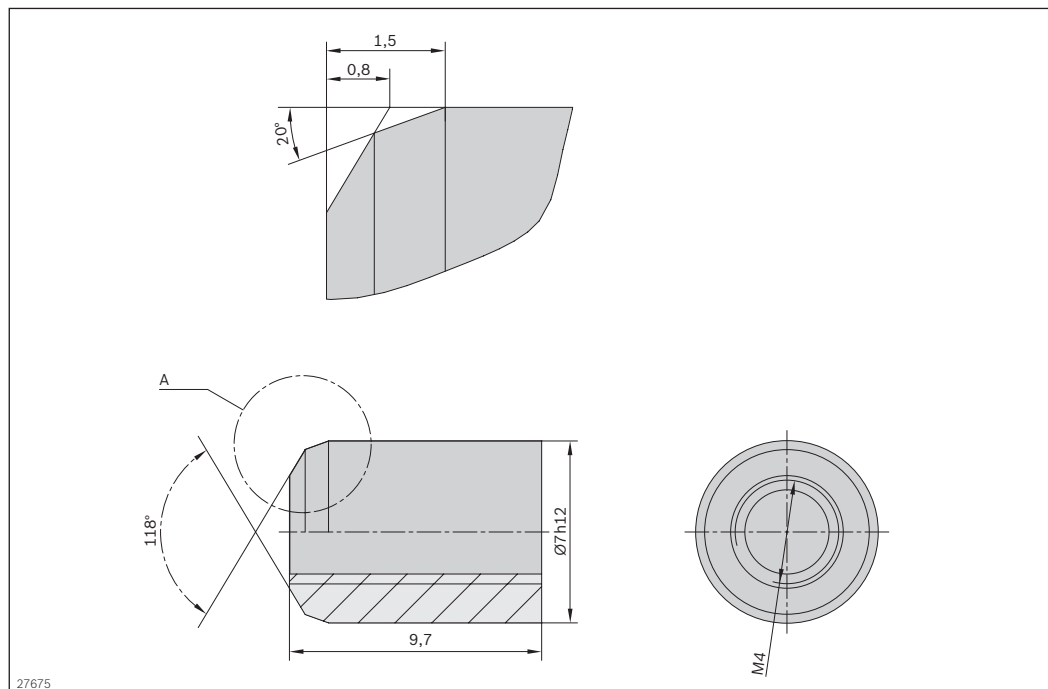
Scope of delivery

- ▶ Set consisting of 8x blocking bolts

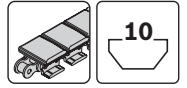
Ordering information

Product designation	Packaging unit	Material number
Blocking bolts	Set	3842537353

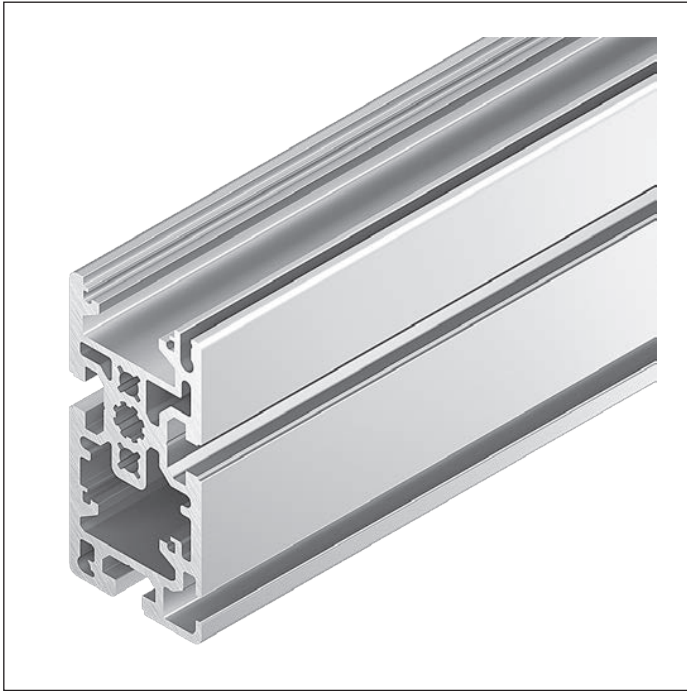
Dimensions



SP 2/C-H section profile



3



- ▶ For conveyor unit self-assembly
- ▶ In especially sturdy design for particularly heavy-duty sections
- ▶ For use with all AS 2/C drive modules, FP 2/H guide profiles and GP 2/H glide profiles
- ▶ Longitudinal grooves for easy mounting
- ▶ For conveyor units with a height to conveying level of 100 mm
- ▶ For heavy-duty conveyor unit assembly
- ▶ Profile width: 50 mm

The section profile is used to set up conveyor units with the flat top chain conveyor medium.

Accessories

Required accessories

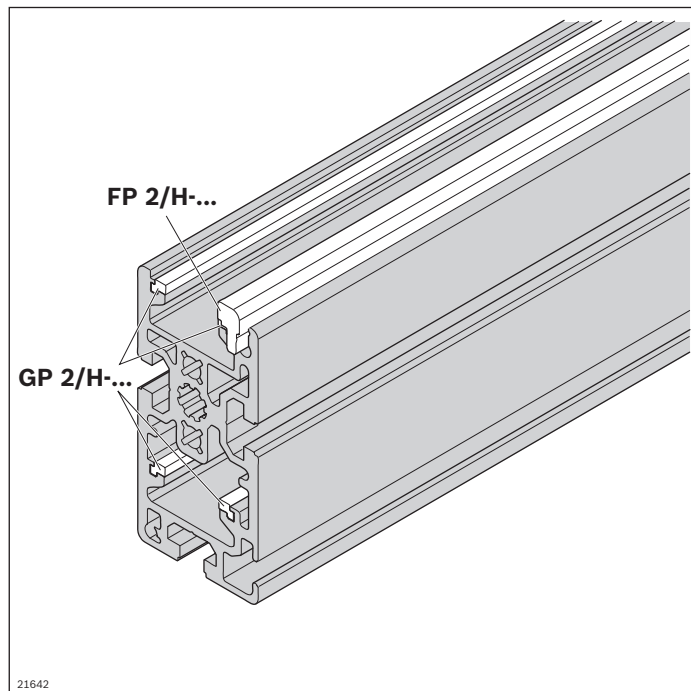
- ▶ FP 2/H-St guide profile, see p. 3-104
- ▶ GP 2/H-St glide profile, see p. 3-105
- ▶ GP 2/H-Kst glide profile, see p. 3-106
- ▶ ST 2/C-H adapter plate kit, see p. 3-102
- ▶ Cover rail for cable duct, see p. 3-164

Ordering information

Product designation	l (mm)	Material number
SP 2/C-H 12 x 6000 mm section profile	6070	3842536793

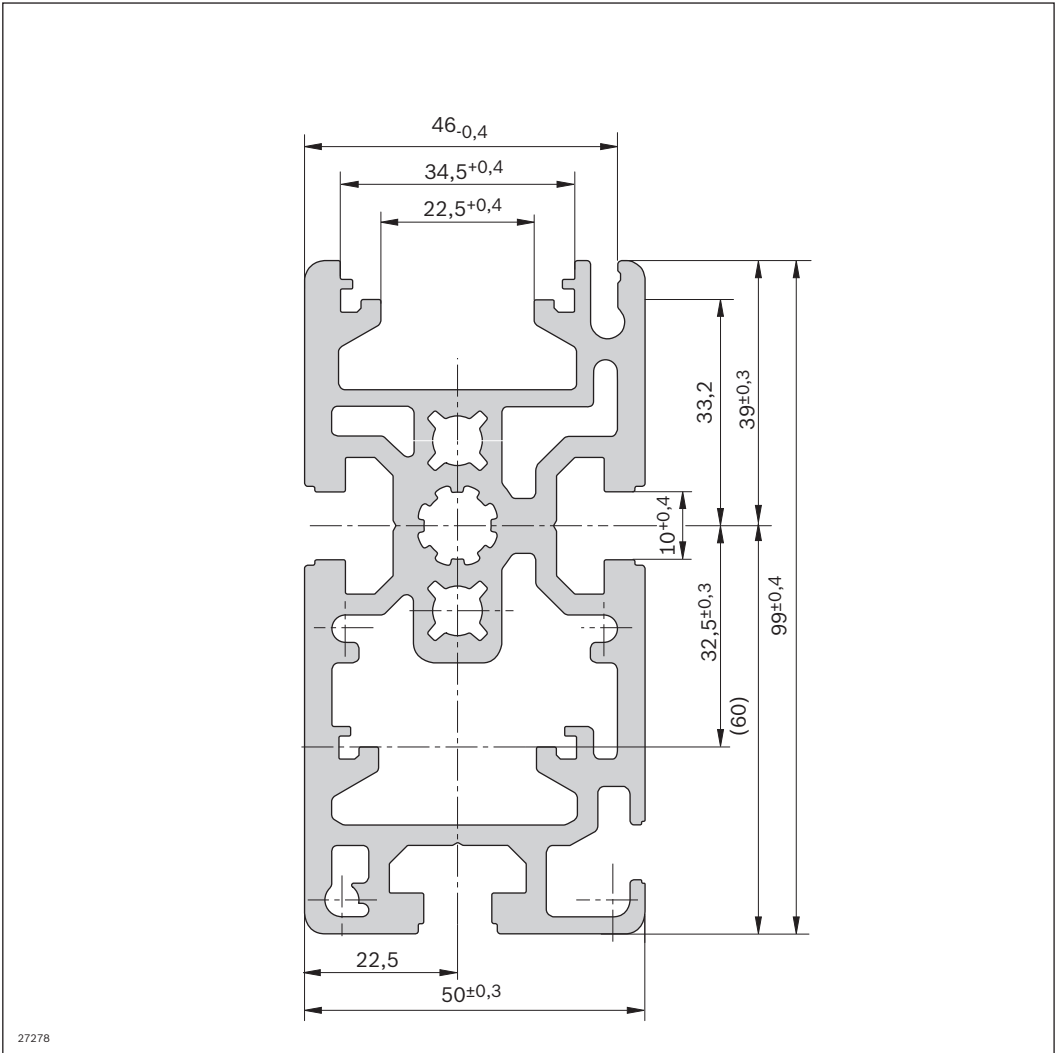
Technical data

Material number		3842536793	
Load			
Moment of inertia	I_x	cm ⁴	156.8
	I_y	cm ⁴	54.9
Moment of resistance	W_x	cm ³	31.9
	W_y	cm ³	21.4
Features			
Material specification		Aluminum; anodized	
Mass	m	kg/m	5.3
Dimensions			
Length	l	mm	6070
Profile surface	A	cm ²	19.3

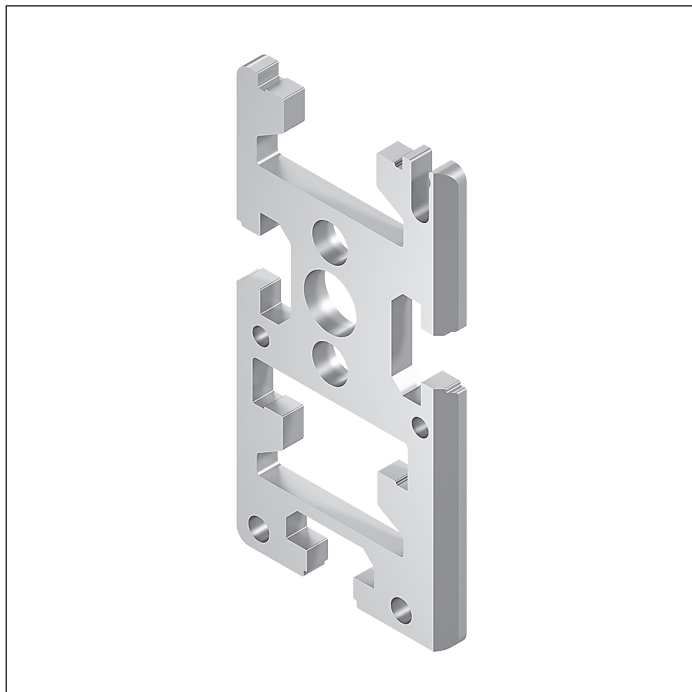


21642

Dimensions



ST 2/C-H adapter plate kit



- ▶ Front end plate
- ▶ For connecting SP 2/C-H section profiles and AS 2/C drive modules;
for connecting SP 2/C-H profiles and UM 2/C return units;
and between section profiles if GP 2 plastic glide profiles are used

The adapter plates are used as front covers and for connecting section profiles and drive modules, or between section profiles and return units.

The adapter plates are also suitable for use between section profiles where GP 2 plastic glide profiles are used.

Delivery notes

Scope of delivery

- ▶ 2x left adapter plate
- ▶ 2x right adapter plate

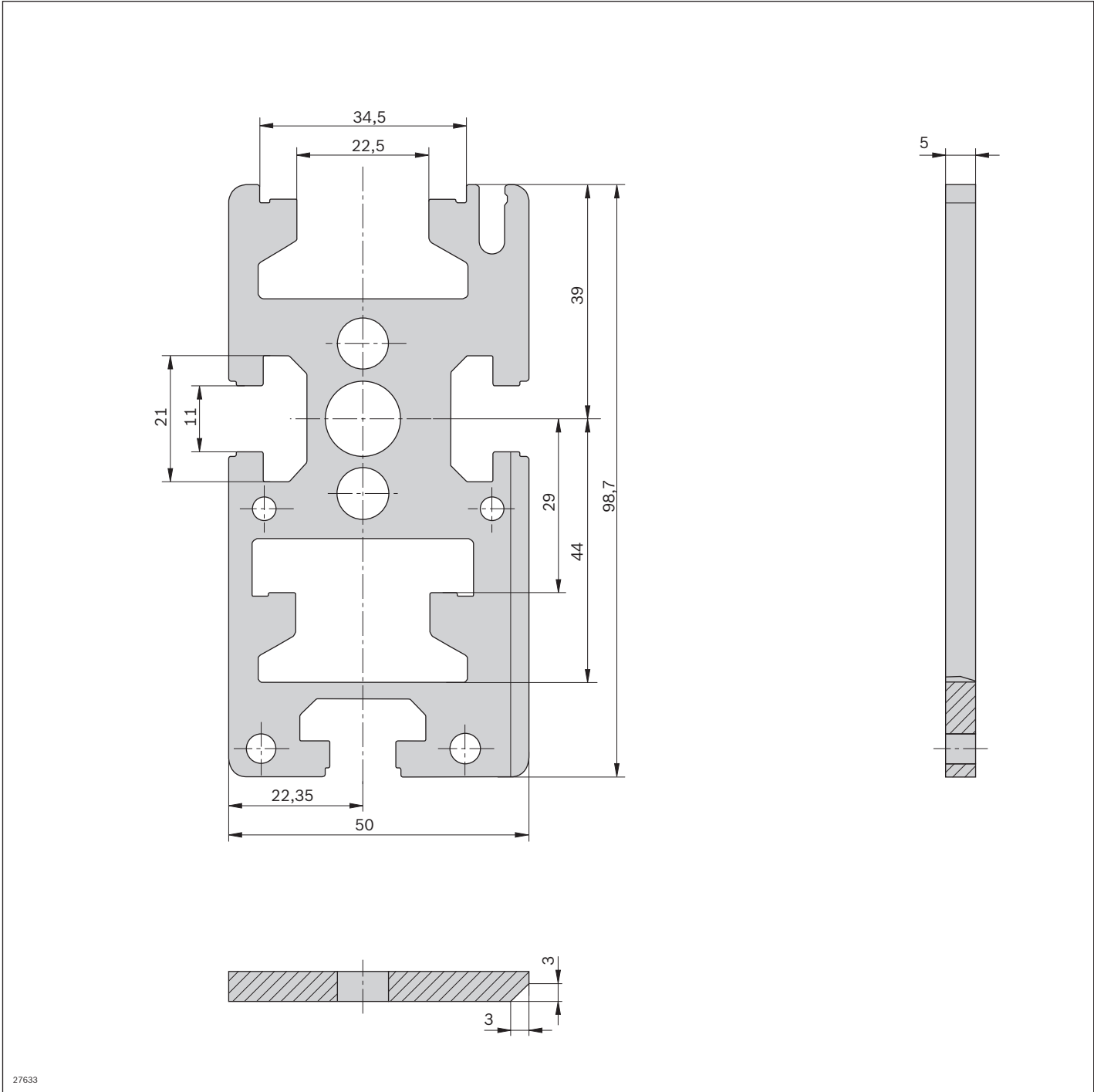
Ordering information

Product designation	Packaging unit	Material number
ST 2/C-H adapter plate kit	4	3842536801

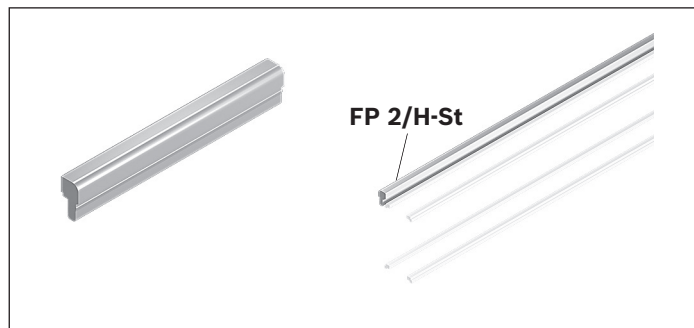
Technical data

Material number	3842536801
Features	
Material specification	Steel; corrosion-resistant

Dimensions



FP 2/H-St guide profile



- ▶ For lateral guidance of the workpiece pallet
- ▶ For conveyor unit self-assembly
- ▶ For sliding onto SP 2/C-H or SP 2/R-H section profiles
- ▶ Robust version in corrosion-resistant steel

Accessories

Required accessories

- ▶ SP 2/C-H section profile, see p. 3-99, or SP 2/R-H, see p. 3-169

Delivery notes

Scope of delivery

- ▶ 24x rods (l = 3000 mm)

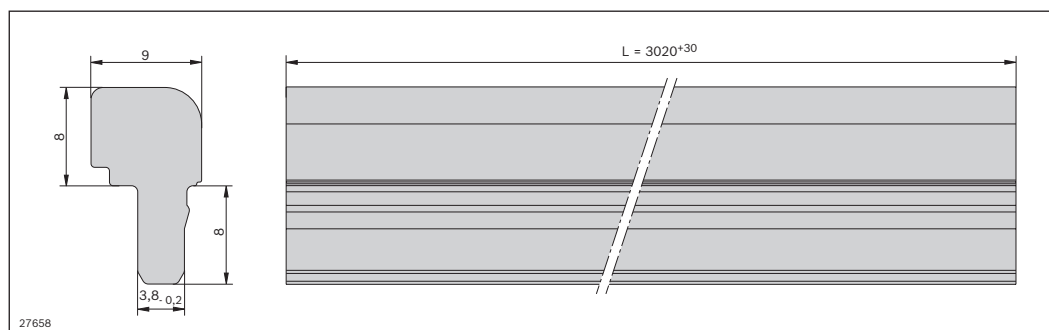
Ordering information

Product designation	l (mm)	Delivery unit	Material number
FP 2/H-St guide profile	3000	24	3842537890

Technical data

Material number	3842537890		
Features			
ESD	Yes		
Material specification	Steel; corrosion-resistant		
Dimensions			
Length	l	mm	3000

Dimensions

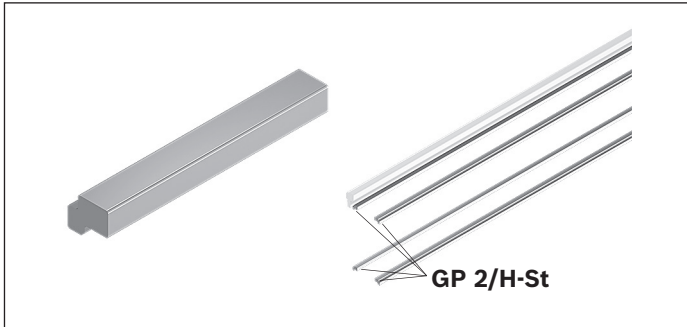


27658

GP 2/H-St glide profile



3



- ▶ For conveyor unit self-assembly
- ▶ For guiding the flat top chain or accumulation roller chain
- ▶ In especially sturdy design with corrosion-resistant steel for particularly heavy-duty sections
- ▶ For sliding onto SP 2/C-H or SP 2/R-H section profiles
- ▶ For use with all AS 2/C drive modules, UM 2/C return units and SP 2/C section profiles

Accessories

Required accessories

- ▶ SP 2/C-H section profile, see p. 3-99, or SP 2/R-H, see p. 3-169

Delivery notes

Scope of delivery

- ▶ 48x rods (l = 3000 mm)

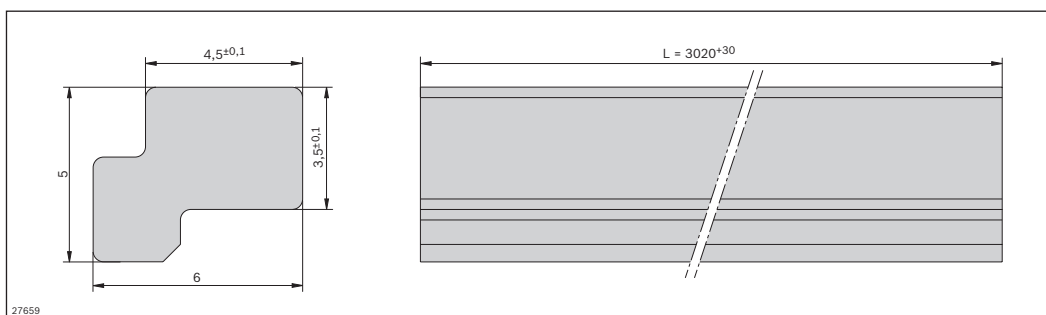
Ordering information

Product designation	l (mm)	Delivery unit	Material number
GP 2/H-St glide profile	3000	48	3842537888

Technical data

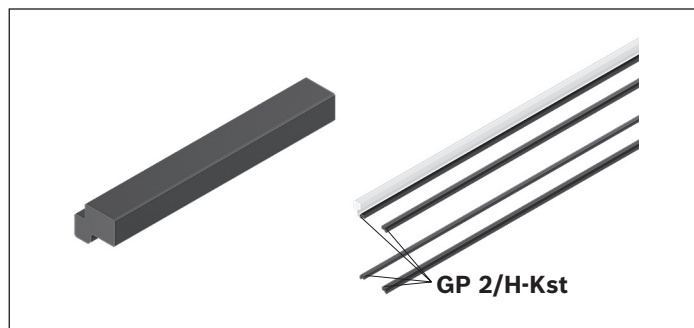
Material number	3842537888		
Features			
ESD	Yes		
Material specification	Steel; corrosion-resistant		
Dimensions			
Length	l	mm	3000

Dimensions



27659

GP 2/H-Kst glide profile



- ▶ For conveyor unit self-assembly
- ▶ For guiding the flat top chain or the accumulation roller chain
- ▶ For sliding onto SP 2/C-H or SP 2/R-H section profiles
- ▶ For use with all AS 2/C drive modules, UM 2/C return units and SP 2/C section profiles

Accessories

Required accessories

- ▶ SP 2/C-H section profile, see p. 3-99, or SP 2/R-H, see p. 3-169

Delivery notes

Scope of delivery

- ▶ 48x rods (l = 3000 mm)

Ordering information

Product designation	l (mm)	Delivery unit	Material number
GP 2/H-Kst glide profile	3000	48	3842537889

Technical data

Material number	3842537889
------------------------	-------------------

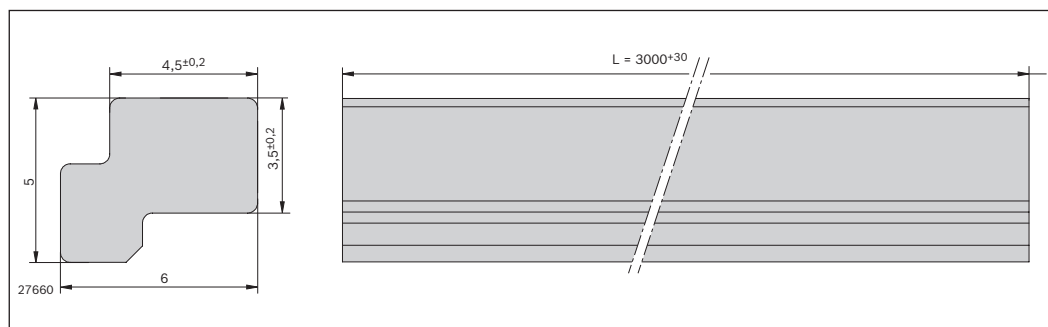
Features

ESD	Yes
Material specification	Plastic; PA (suitable for use in an EPA)

Dimensions

Length	l	mm	3000
--------	---	----	------

Dimensions



Profile connector



- ▶ For connecting two SP 2 profiles end to end
- ▶ Two profile connectors are recommended for each profile joint
- ▶ For conveyor unit self-assembly
- ▶ For use with all AS 2/C drive modules, UM 2/C return units and SP 2/C section profiles

Delivery notes

Scope of delivery

- ▶ Profile connector, screws

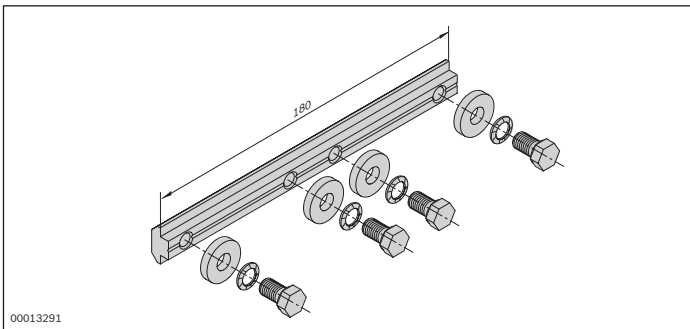
Ordering information

Product designation	Material number
Profile connector	3842528746

Technical data

Material number	3842528746
Features	
Material specification	Steel; galvanized

Dimensions



QV 2 cross connector



- ▶ For conveyor unit self-assembly
- ▶ For connecting section profiles and defining the track width
- ▶ Can be combined with all SP 2 section profiles.

Formula for calculating the number of cross connectors needed

$$A_{QV} = (l/2000 \text{ mm}) + 1$$

A_{QV} = number of cross connectors

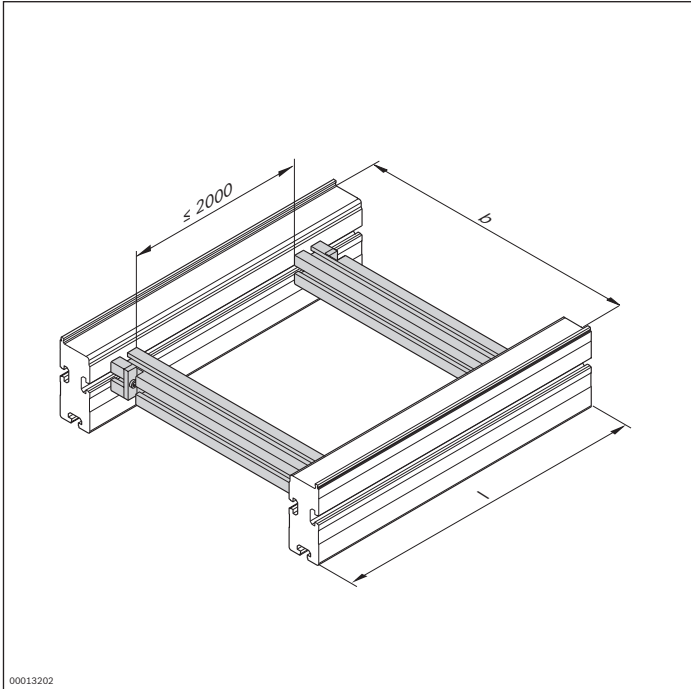
l = section length

Delivery notes

Scope of delivery

- ▶ 45x60 strut profile, finished
- ▶ 2x fastening material to mount on an ST 2 section

Ordering information



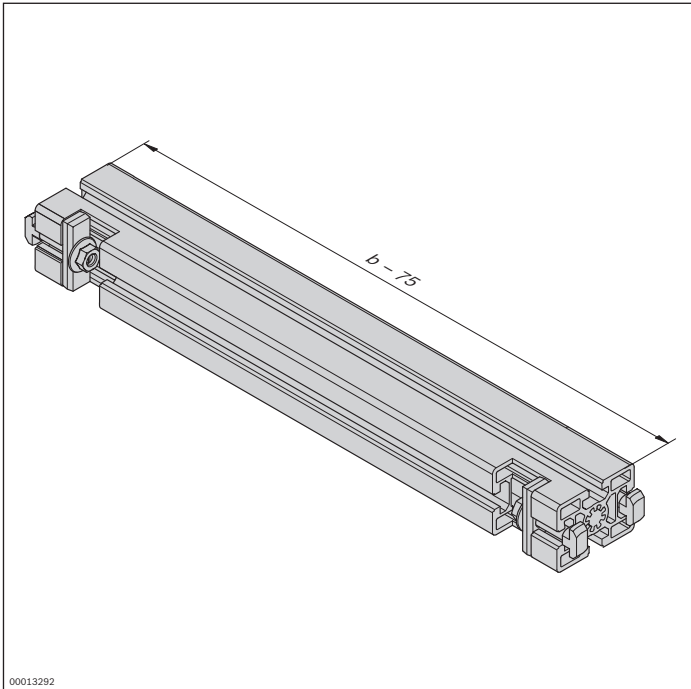
Material number		3842994635
b (mm)	Track width in direction of transport	160; 240; 320; 400; 480; 640; 800; 1040; 1200
		160 ... 1200 ¹

¹ Individual width variants available

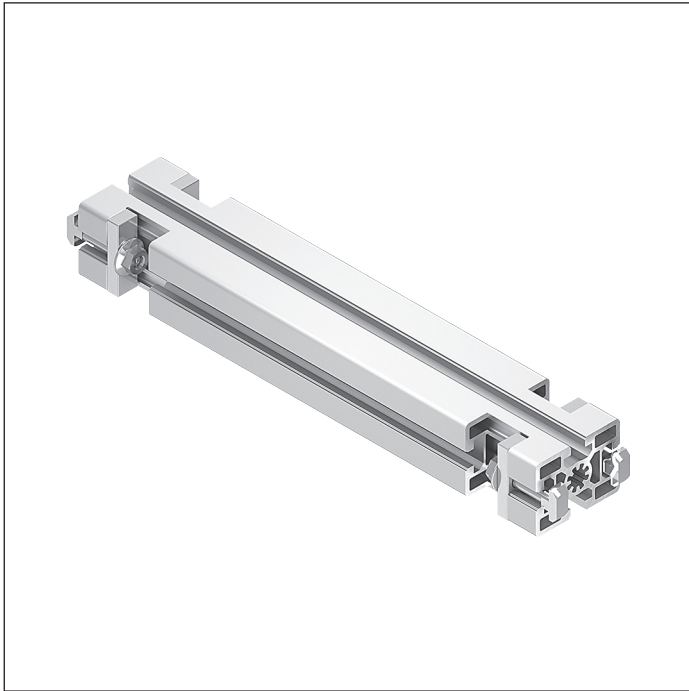
Technical data

Material number	3842994635
Features	
Material specification	Aluminum, natural; anodized

Dimensions



QV 2-H cross connector



- ▶ For heavy-duty conveyor unit self-assembly
- ▶ For connecting section profiles and defining the track width
- ▶ Can be combined with all SP 2 section profiles

QV 2-H cross connectors are particularly suitable for connections between section profiles in heavy-duty systems.

Formula for calculating the number of cross connectors needed

$$A_{QV} = (l/2000 \text{ mm}) + 1$$

A_{QV} = number of cross connectors

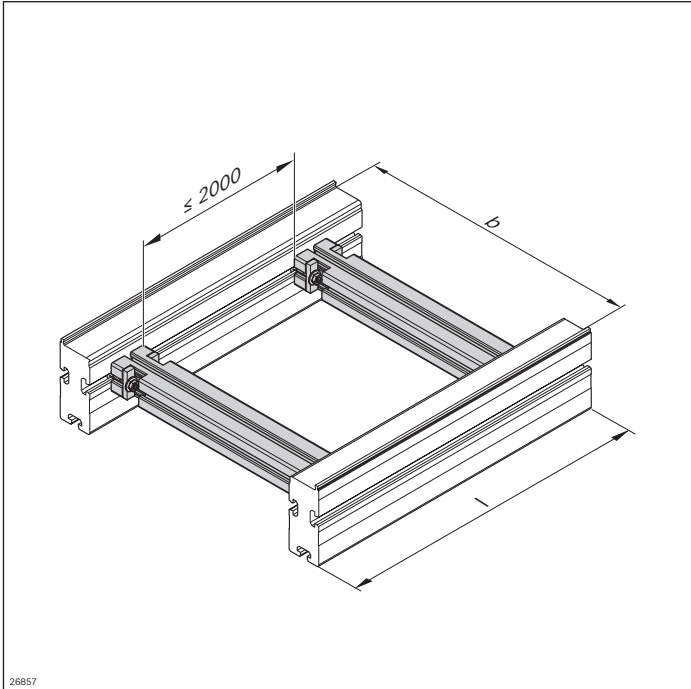
l = section length

Delivery notes

Scope of delivery

- ▶ 45x60 strut profile, finished
- ▶ 4x fastening material to mount on an ST 2 section

Ordering information



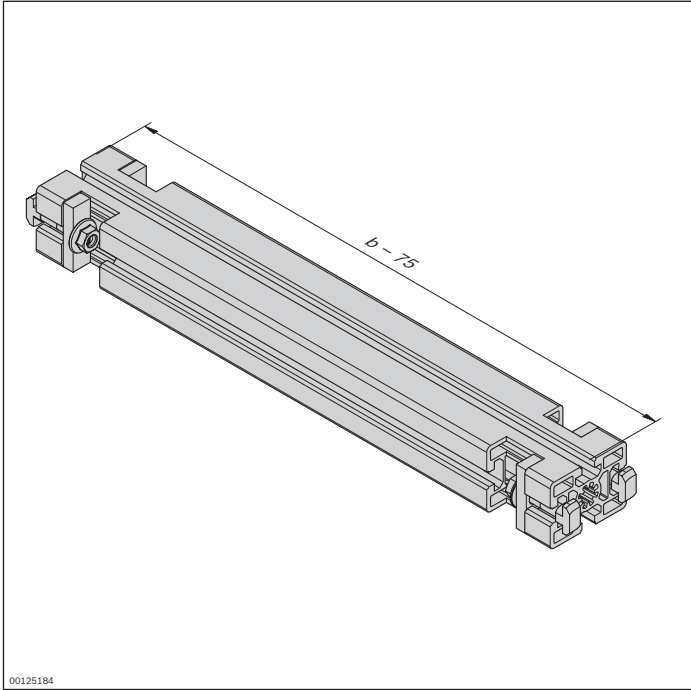
Material number	3842993052	
b (mm)	Track width in direction of transport	160; 240; 320; 400; 480; 640; 800; 1040; 1200
		160 ... 1200 ¹

¹ Individual width variants available

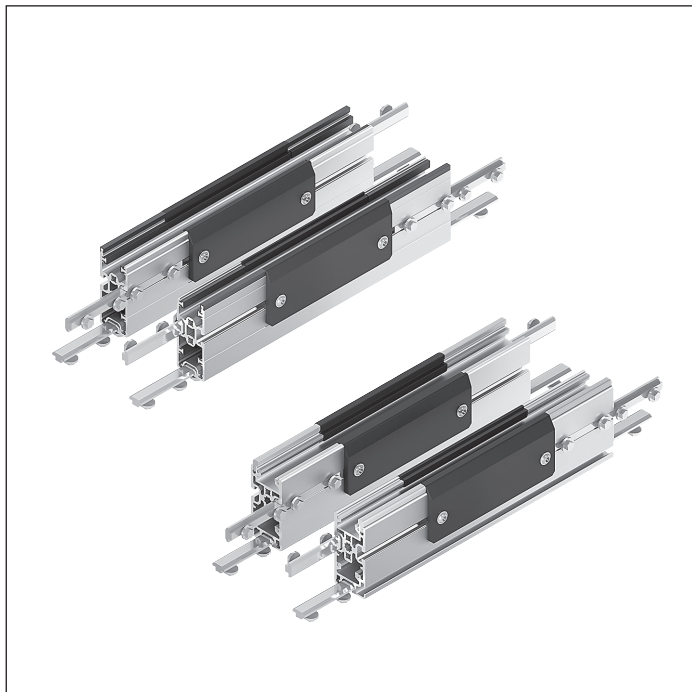
Technical data

Material number	3842993052
Features	
Material specification	Aluminum, natural; anodized

Dimensions



ST 2/...-W maintenance section



- ▶ For maintenance use (assembly, disassembly or lubrication)
- ▶ Two removable side covers each
- ▶ Suitable for flat top chains

The maintenance section is a section element with removable caps. It is used for maintenance (assembly,

disassembly, lubrication) of the flat top chain conveyor medium.

Delivery notes

Scope of delivery

- ▶ 2x maintenance section elements, 400 mm long
- ▶ Incl. 8x profile connectors

Ordering information

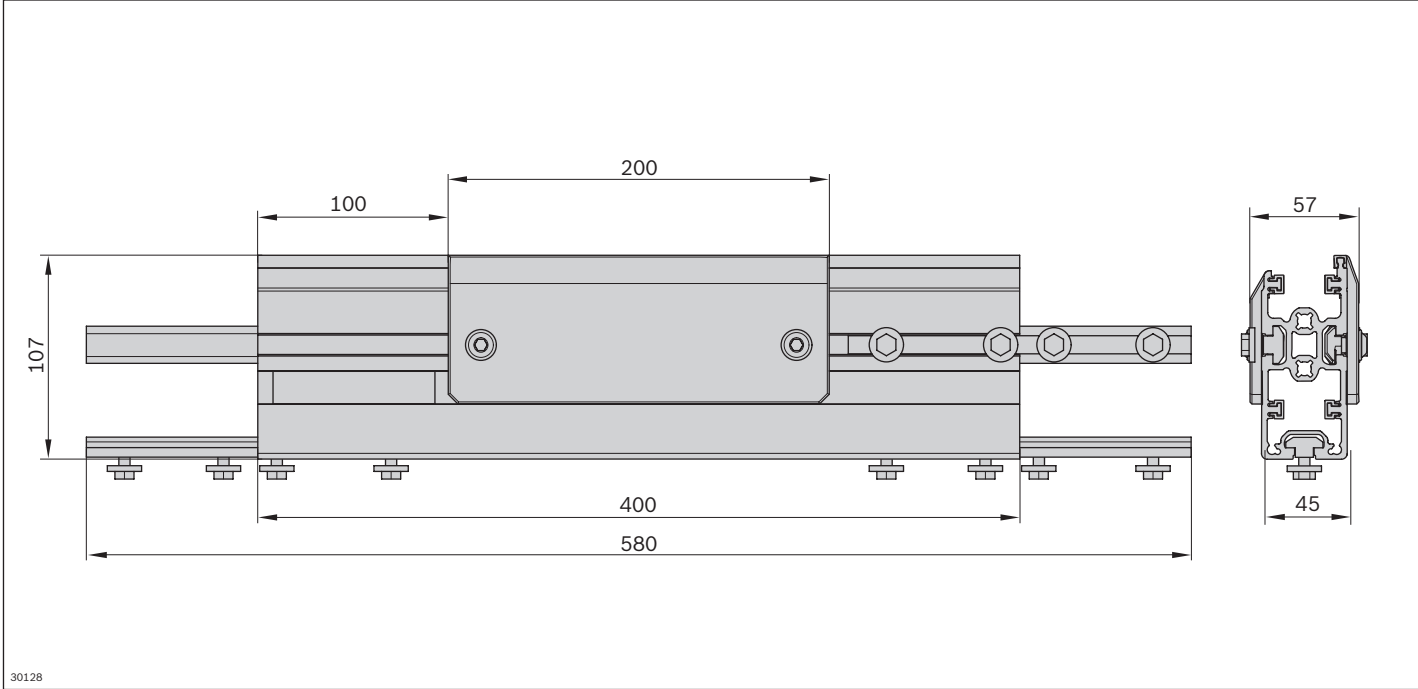
Product designation	Material number
ST 2/C-W maintenance section	3842532777
ST 2/C-H-W maintenance section	3842537310

Technical data

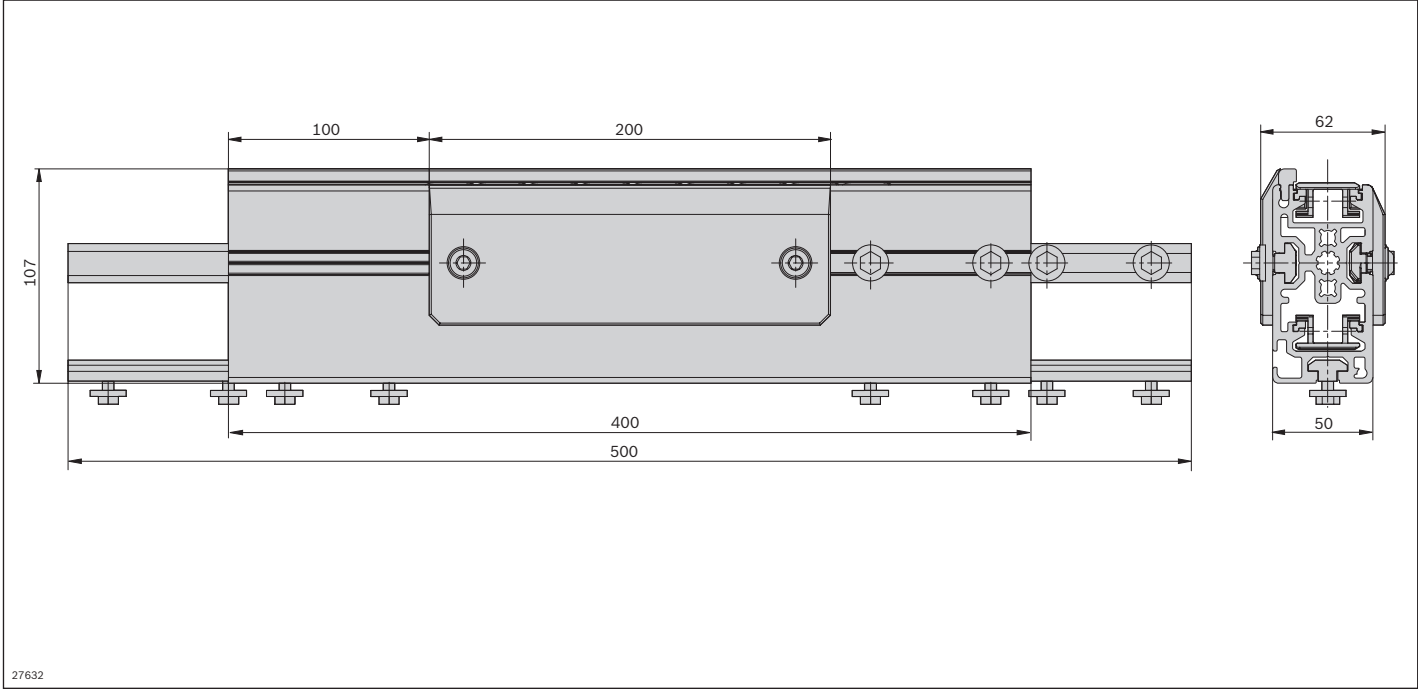
Material number	3842532777	3842537310
Features		
ESD	Yes	Yes
Material specification	Section profile: Aluminum, natural; anodized Side cover: PE	Section profile: Aluminum, natural; anodized Side cover: PE
Dimensions		
Length	400	400

Dimensions

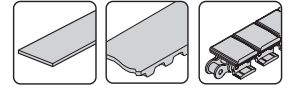
ST 2/C-W maintenance section



ST 2/C-H-W maintenance section



Scraper



- ▶ To scrape small parts from the conveyor medium
- ▶ For use with workpiece pallets with a minimum weight of 3 kg
- ▶ Conveyor media: Belt, toothed belt and flat top chain
- ▶ May be mounted on the right side (R) or left side (L)
- ▶ Reversible operation is not possible on sections with scrapers

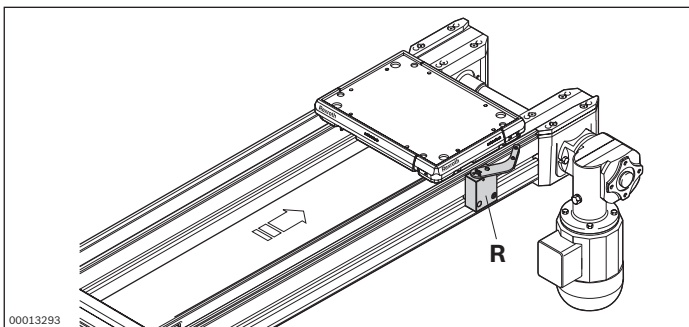
Delivery notes

Scope of delivery

- ▶ 1x scraper, right or left, including fastening material

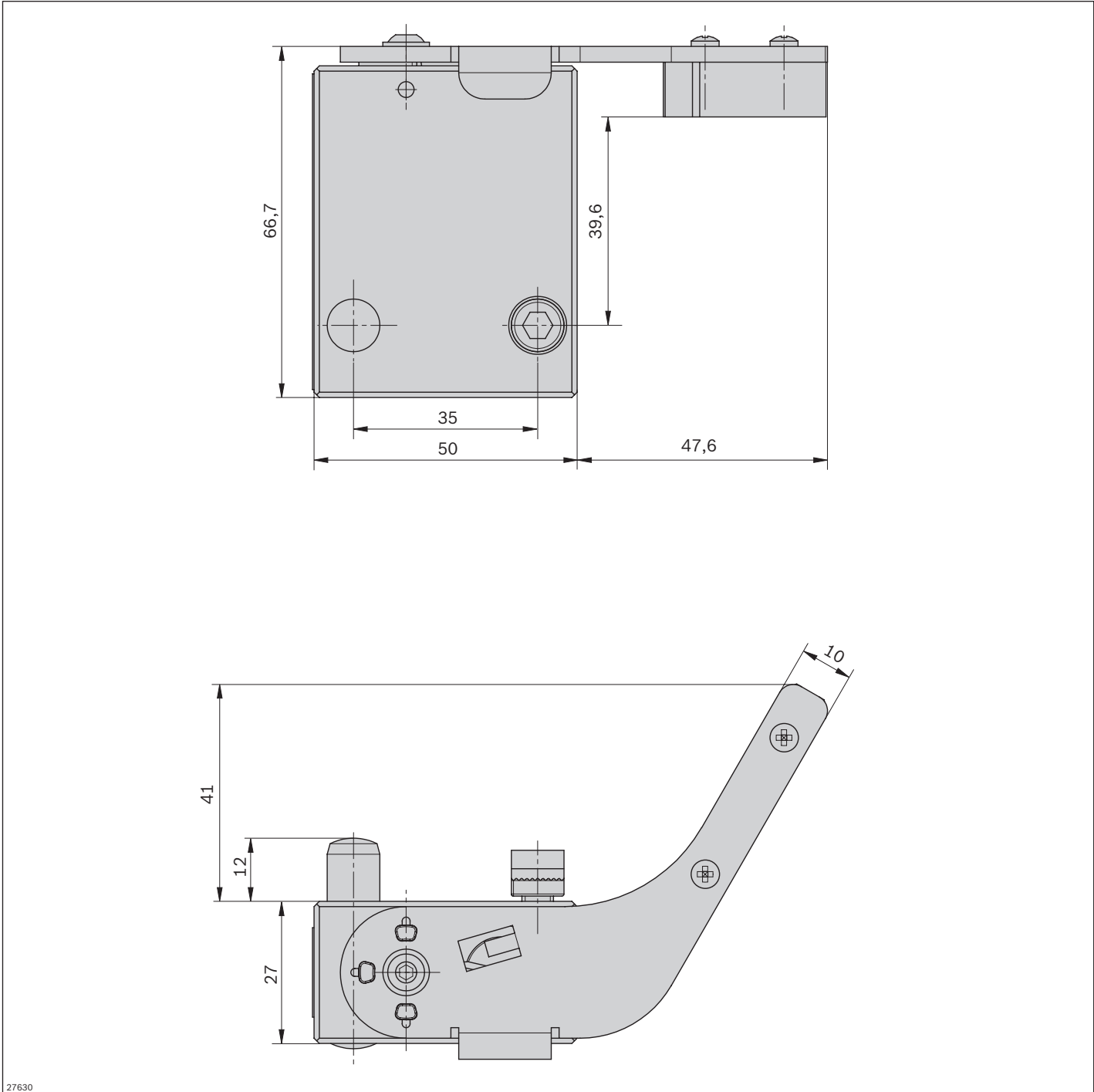
Ordering information

Product designation	Material number
Scraper, right	3842532679
Scraper, left	3842532680



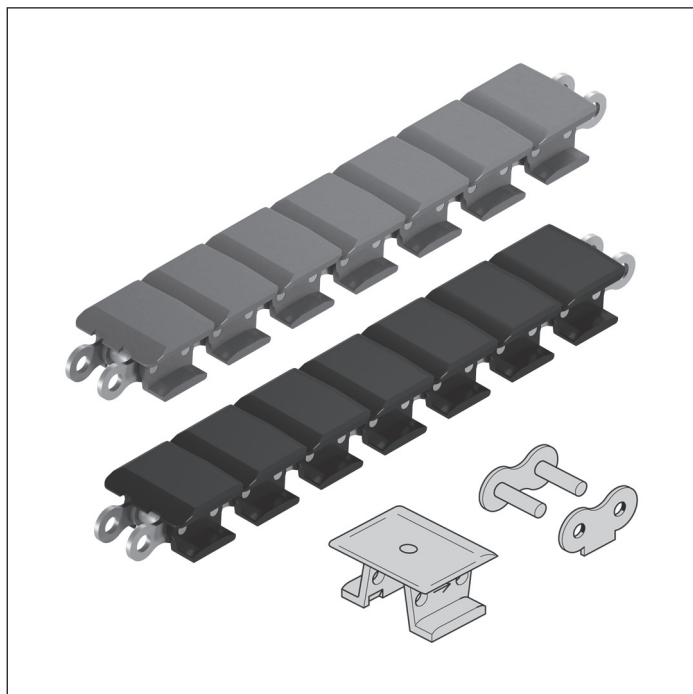
00013293

Dimensions



27630

Plastic flat top chain Master link



- ▶ Conveyor medium for use with conveyor unit self-assembly
- ▶ For use with ST 2/C sections and ST 2/C-H sections
- ▶ Delivered in units of up to 12000 mm. Lengths of $l > 12000$ mm can be produced by connecting several flat top chains using a master link
- ▶ Nickel-plated steel base chain version
- ▶ Steel chain with PA66 polyamide support caps

Note:

- ▶ The plastic flat top chain, which is also suitable for use in an EPA, cannot be used in curves and curve arcs
- ▶ Accumulation operation with workpiece pallets fitted with PE wear pads not recommended as this increases wear
- ▶ The plastic flat top chain is not permitted for use with steel GP glide profiles

Conveyor medium for the workpiece pallets in the TS 2plus system in conjunction with ST 2/C and ST 2/C-H conveyor sections.

Accessories

Recommended accessories

- ▶ Additional master link, 3842551234
- ▶ Tool for flat top chain, see p. 3-118

Delivery notes

Scope of delivery

- ▶ Plastic flat top chain ($l = 12000$ mm; black), incl. 1x master link
- ▶ ESD plastic flat top chain ($l = 12000$ mm; gray), incl. 1x master link
- ▶ Master link, incl. 1x ESD flat top (gray) with hole

Ordering information

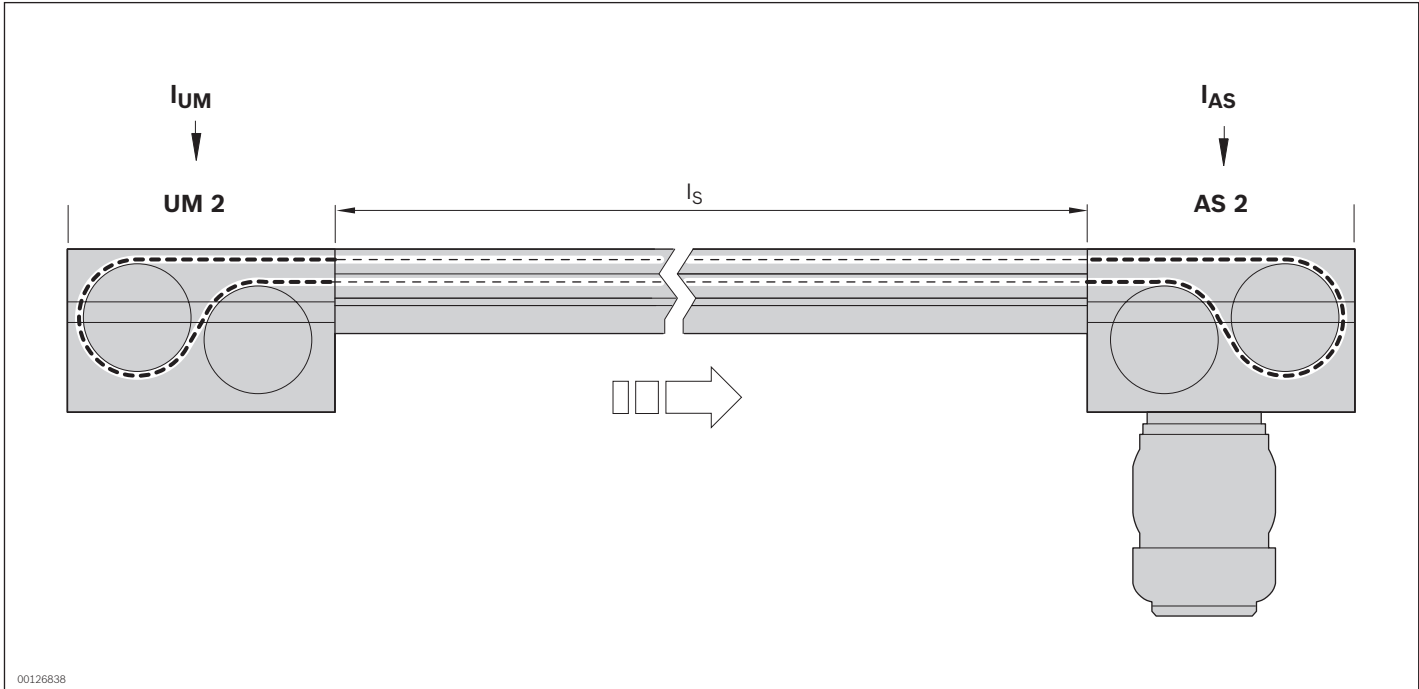
Product designation	Material number
Plastic flat top chain	3842551226
ESD plastic flat top chain	3842551227
Master link*	3842551234

* Can be used on both plastic flat top chains

Technical data

Material number	3842551226	3842551227	3842551234
Features			
ESD	No	Yes	Yes
Material specification	Base chain: Steel; nickel-plated Flat chain: PA66	Base chain: Steel; nickel-plated Flat chain: PA66 (suitable for use in an EPA)	Steel; nickel-plated
Dimensions			
Length	l	mm	12000
			12000

Dimensions



The required chain length is determined using the following formula.

$$l_C = 2 \times l_S + l_{AS} + l_{UM}$$

Length of the conveyor medium for flat top chain

- $l_{UM\ 2/C-170} = 310\text{ mm}$
- $l_{UM\ 2/C-60} = 150\text{ mm}$
- $l_{AS} = 625\text{ mm}$

- l_C = length of flat top chain
- l_S = length of the section profile
- l_{AS} = length of the conveyor medium in the drive module
- l_{UM} = length of the conveyor medium at the return unit

Chain breaker

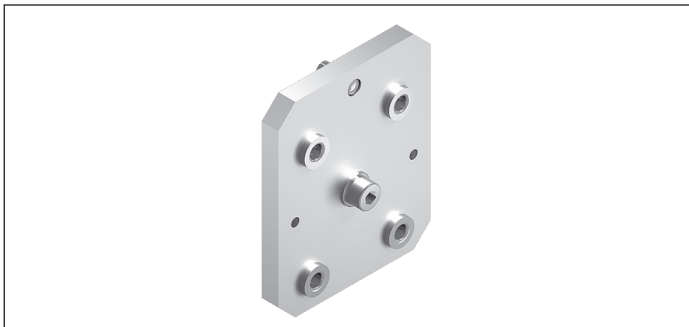


► For disassembling plastic flat top chains

Ordering information

Product designation	Material number
Chain breaker for plastic flat top chain	8981010510

Drilling template for blocking bolts



Ordering information

Product designation	Material number
Drilling template for blocking bolts	3842538972