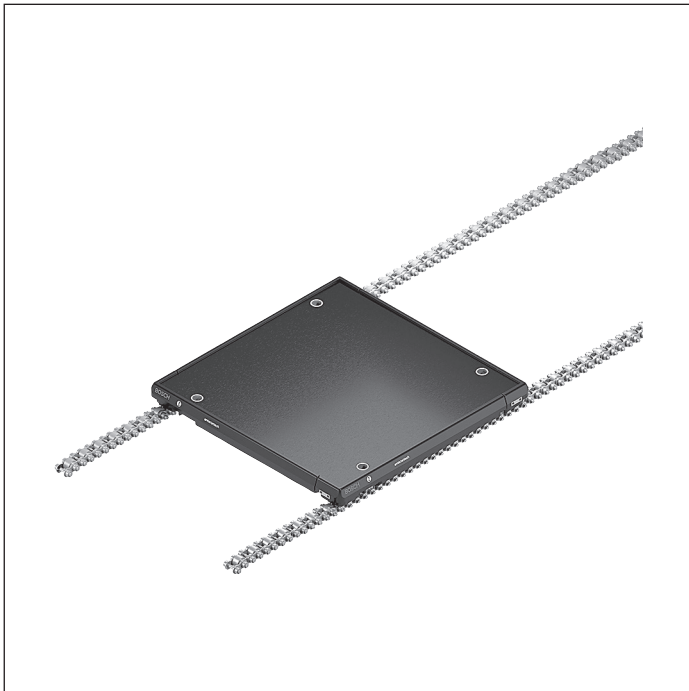




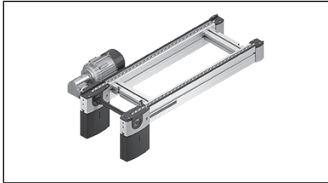
Accumulation roller chain conveyor medium



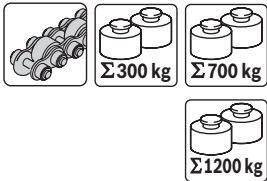
The accumulation roller chain is suitable for large, heavy workpiece pallets. Stress occurring due to media such as test oils or production emissions does not affect functional reliability. The accumulation rollers do not only reduce the accumulation pressure on stop gates, but also enable a quick return to the transport speed following work at a processing station.

In conjunction with PE wear pads on the workpiece pallets, the standard design with plastic glide profiles in the section profile permits surface loads of up to 1.5 kg/cm, whereas the optionally available version with steel glide profiles and accumulation roller chain with steel rollers can tolerate surface loads up to 2 kg/cm.

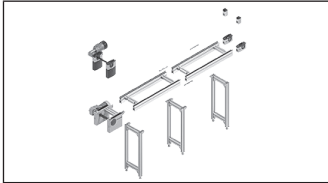
The new HD profiles equipped with steel glide profiles and steel guide profile provide a particularly sturdy, low-maintenance combination.



BS 2/R belt sections



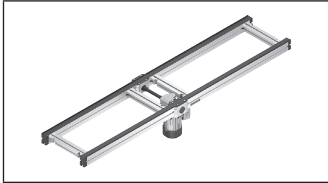
3-122



**Parts for AS 2/..., UM 2/..., ST 2...
conveyor units**



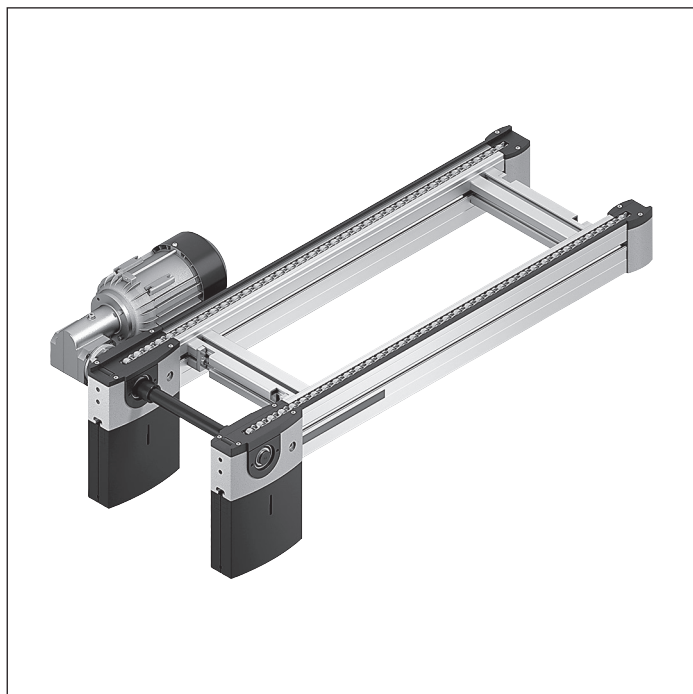
3-134



Connection kits

3-236

BS 2/R-300 belt section



- ▶ Conveyor section ready to use
- ▶ Conveyor medium: Accumulation roller chain (suitable for use in an EPA)
- ▶ Reversible operation possible for $l \leq 2000$ mm and accumulation roller chains without small parts protection
- ▶ Chain tensioner for reversible operation contained in drive head
- ▶ Motor mounting right, left or central (central from track width of 240 mm)
- ▶ Motor connection: optionally with cable/plug or terminal box
- ▶ Special models on request

The belt section is a ready for operation conveyor section with own drive for the transportation of workpiece pallets in the longitudinal direction or for the transverse conveying of the workpiece pallet between parallel conveyor sections in connection with two HQ 2 lift transverse units.

Note: With short, light workpiece pallets ($l_{WT} = 160, 240$), it may be necessary to ensure that conveyor trenches are traversable by installing the included acceleration element. When doing so, note the following:
Avoid accumulation above the acceleration element.
Accumulation above the acceleration element causes severe roller wear and shortens the service life of the chain.

Accessories

Recommended accessories

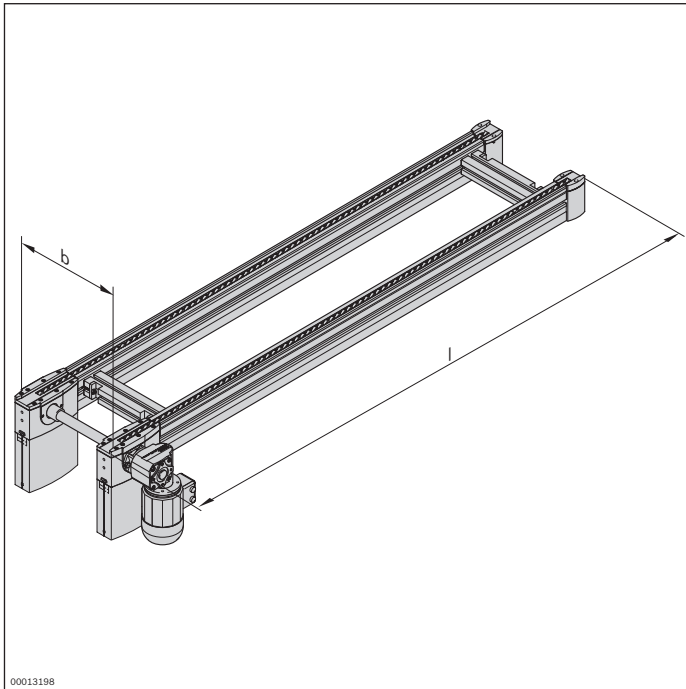
- ▶ Connection kits, see page 3-236
- ▶ SZ 2/... leg sets, see page 6-2
- ▶ LU 2 automatic lubrication unit, see p. 3-152

Delivery notes

Condition on delivery

- ▶ Fully assembled

Ordering information



Material number		3842999904
b (mm)	Track width in direction of transport	160; 240; 320; 400; 480; 640; 800; 1040; 1200 160 ... 1200 ¹
l (mm)	Length	300 ... 6000
v _N (m/min)	Nominal speed	0 ² ; 6; 9; 12; 15; 18
U (V)	Voltage	See motor data, p. 11-24ff
f (Hz)	Frequency	See motor data, p. 11-24ff
AT	Motor connection S = cable/plug K = terminal box	S; K
MA	Motor mounting R = right L = left M = center	R; L; M ³
RV	Reversible operation No reversible operation (RV = 0) Reversible operation (RV = 1)	0; 1
GP	Corrosion-resistant steel glide profile (GP = S) Plastic (GP = K)	K; S
KT	Chain type Accumulation roller chain with PA accumulation rollers (KT = 1) Accumulation roller chain with steel accumulation rollers (KT = 2) Accumulation roller chain with PA accumulation rollers and small parts protection (KT = 3) Accumulation roller chain with steel accumulation rollers and small parts protection (KT = 4)	1; 2; 3; 4

¹ Individual width variants available

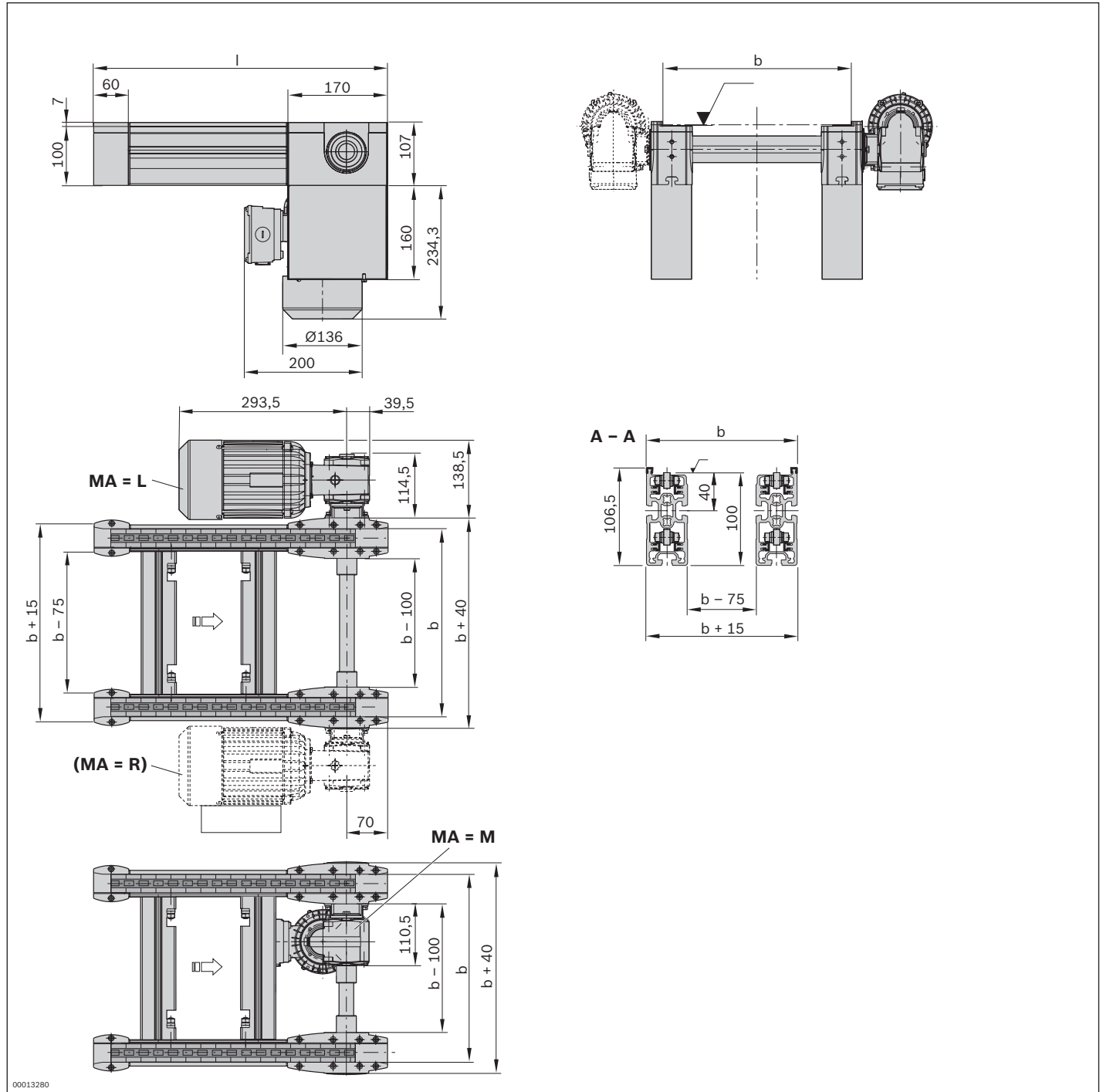
² v_N = 0: without motor or gear

³ MA = M only when b ≥ 240 mm

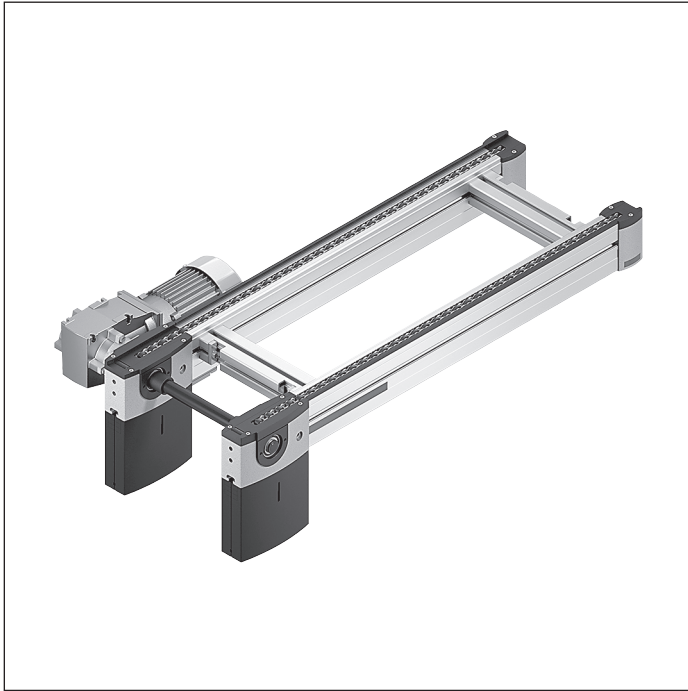
Technical data

Material number		3842999904
Load		
Max. section load in accumulation operation	kg	300
Features		
ESD		Yes
Material specification		Section profile: Aluminum, natural; anodized Glide profile Polyamide or steel; corrosion-resistant Chain: Polyamide or steel accumulation rollers Small parts protection: Polyamide
Max. operating temperature	T	°C
		+40
Dimensions		
Length	l	mm
		300 ... 6000

Dimensions



BS 2/R-700 belt section



- ▶ Conveyor medium: Accumulation roller chain (suitable for use in an EPA)
- ▶ Reversible operation not permitted
- ▶ Motor mounting right or left
- ▶ Motor connection: optionally with cable/plug or terminal box
- ▶ Special models on request

3

The belt section is a ready-to-use conveyor section with built-in drive for the transportation of workpiece pallets in the longitudinal direction or for the transverse conveying of the workpiece pallet between parallel conveyor sections in connection with two HQ 2 lift transverse units.

Note: With short, light workpiece pallets ($l_{WT} = 160, 240$), it may be necessary to ensure that conveyor trenches are traversable by installing the included acceleration element. When doing so, note the following:
Avoid accumulation above the acceleration element.
Accumulation above the acceleration element causes severe roller wear and shortens the service life of the chain.

Accessories

Recommended accessories

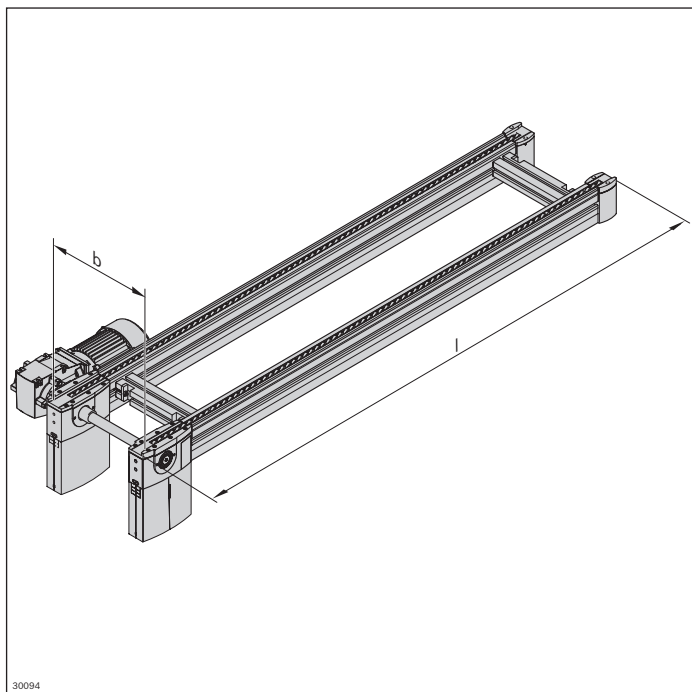
- ▶ Connection kits, see page 3-236
- ▶ SZ 2/... leg sets, see page 6-2
- ▶ LU 2 automatic lubrication unit, see p. 3-152

Delivery notes

Condition on delivery

- ▶ Fully assembled

Ordering information



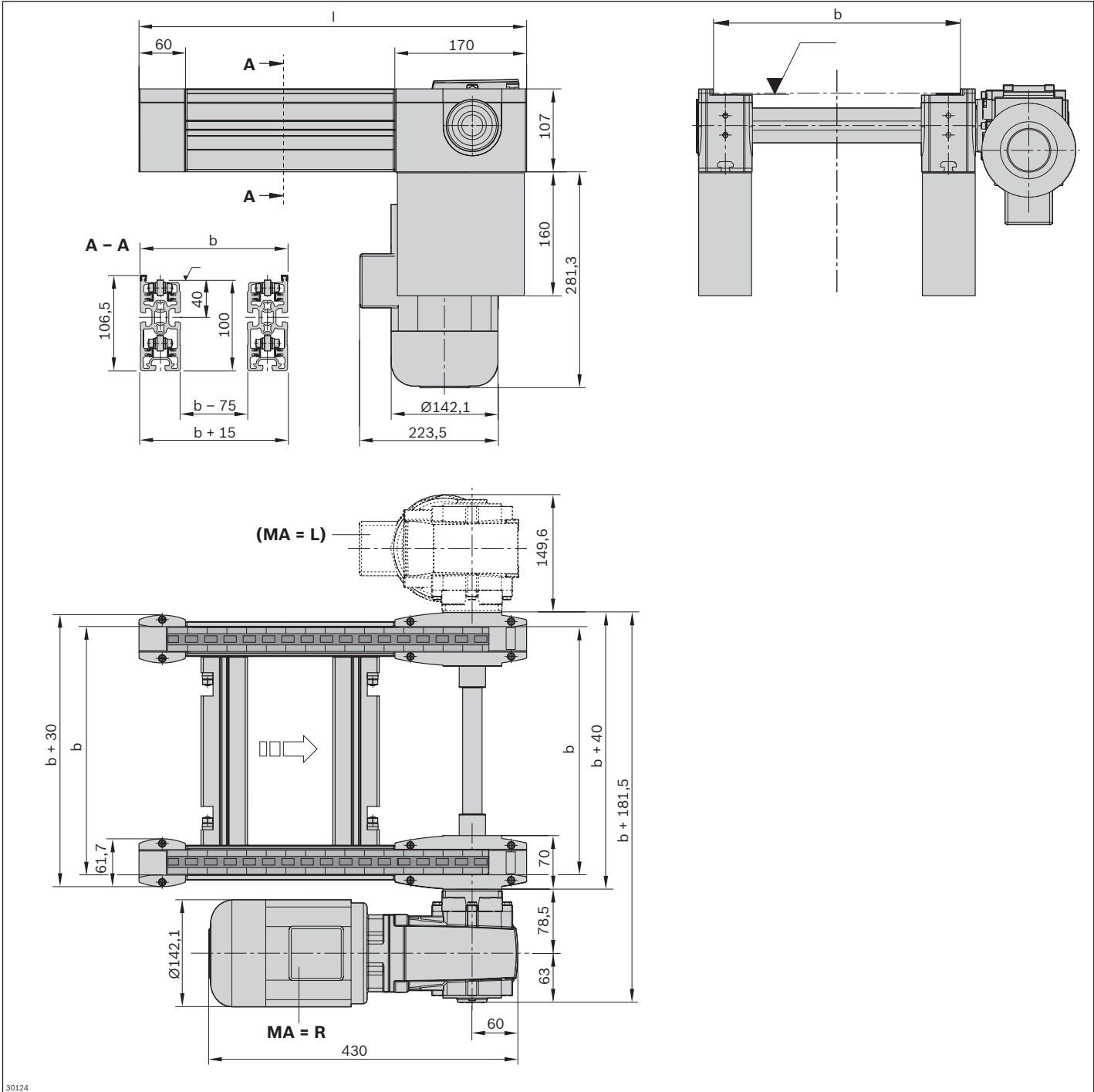
Material number		3842998096
b (mm)	Track width in direction of transport	160; 240; 320; 400; 480; 640; 800; 1040; 1200; 160 ... 1200
l (mm)	Length	300 ... 6000
v_N (m/min)	Nominal speed	0 ¹⁾ ; 6; 9; 12; 15; 18
U (V)	Voltage	See motor data, p. 11-24ff
f (Hz)	Frequency	See motor data, p. 11-24ff
AT	Motor connection S = cable/plug K = terminal box	S; K
MA	Motor mounting R = right L = left	R; L
GP	Corrosion-resistant steel glide profile (GP = S) Plastic (GP = K)	K; S
KT	Chain type Accumulation roller chain with PA accumulation rollers (KT = 1) Accumulation roller chain with steel accumulation rollers (KT = 2) Accumulation roller chain with PA accumulation rollers and small parts protection (KT = 3) Accumulation roller chain with steel accumulation rollers and small parts protection (KT = 4)	1; 2; 3; 4

¹⁾ $v_N = 0$: without motor or gear

Technical data

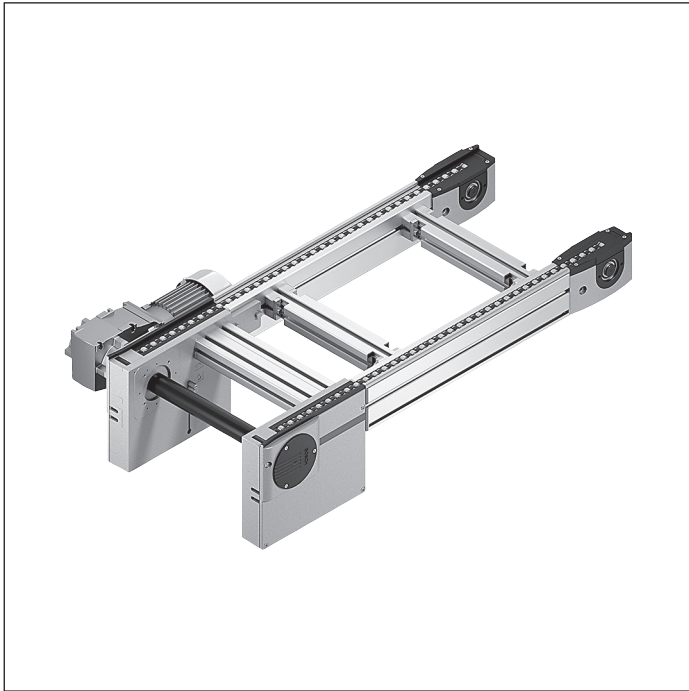
Material number		3842998096
Load		
Max. section load in accumulation operation	kg	700
Features		
ESD		Yes
Material specification		Section profile: Aluminum, natural; anodized Glide profile Polyamide or steel; corrosion-resistant Chain: Polyamide or steel accumulation rollers Small parts protection: Polyamide
Max. operating temperature	T	°C
		+40
Dimensions		
Length	l	mm
		300 ... 6000

Dimensions



30124

BS 2/R-H belt section



- ▶ Conveyor section ready to use
- ▶ Sturdy design for especially heavy-duty systems
- ▶ Conveyor medium: Accumulation roller chain (suitable for use in an EPA)
- ▶ Reversible operation possible for $l \leq 2000$ mm and accumulation roller chains without small parts protection
- ▶ Chain tensioner for reversible operation is mounted on the return unit at $RV = 1$
- ▶ Motor mounting right, left or central
- ▶ Motor connection: optionally with cable/plug or terminal box
- ▶ Profile width: 50 mm
- ▶ Special models on request

The belt section is a ready-to-use conveyor section with built-in drive for the transportation of workpiece pallets in the longitudinal direction or for the transverse conveying of

the workpiece pallet between parallel conveyor sections in connection with two HQ 2 lift transverse units.

Accessories

Recommended accessories

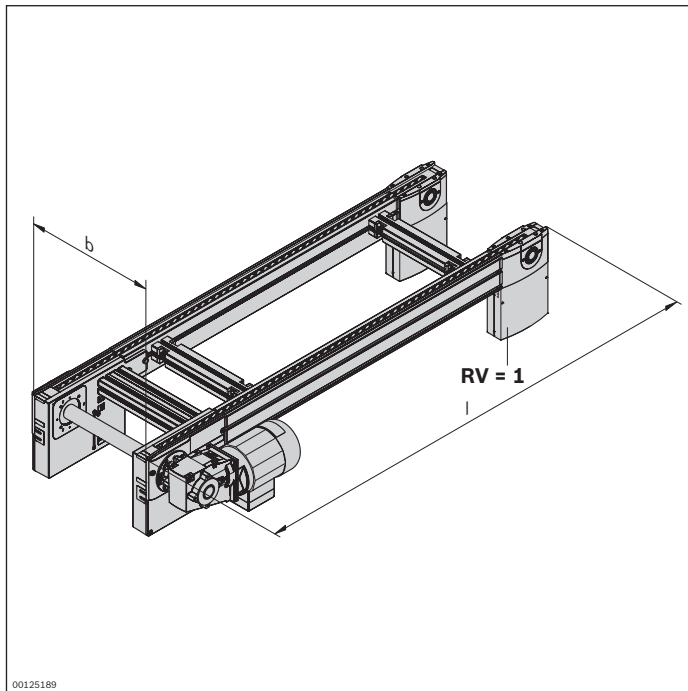
- ▶ Connection kits, see page 3-236
- ▶ SZ 2/... leg sets, see page 6-2
- ▶ LU 2 automatic lubrication unit, see p. 3-152

Delivery notes

Condition on delivery

- ▶ Fully assembled

Ordering information



Material number		3842998238
b (mm)	Track width in direction of transport	400 ... 1200
l (mm)	Length	650 ... 6000
v_N (m/min)	Nominal speed	0 ¹⁾ ; 6; 9; 12; 15; 18 ²⁾
U (V)	Voltage	See motor data, p. 11-24ff
f (Hz)	Frequency	See motor data, p. 11-24ff
AT	Motor connection S = cable/plug K = terminal box	S; K
MA	Motor mounting R = right L = left M = center	R; L; M
RV	Reversible operation No reversible operation (RV = 0) Reversible operation (RV = 1)	0, 1 ³⁾
GP	Corrosion-resistant steel glide profile (GP = S) Plastic (GP = K)	0; 1
KT	Chain type Accumulation roller chain with PA accumulation rollers (KT = 1) Accumulation roller chain with steel accumulation rollers (KT = 2) Accumulation roller chain with PA accumulation rollers and small parts protection (KT = 3) Accumulation roller chain with steel accumulation rollers and small parts protection (KT = 4)	1; 2; 3; 4

¹⁾ $v_N = 0$: without motor or gear

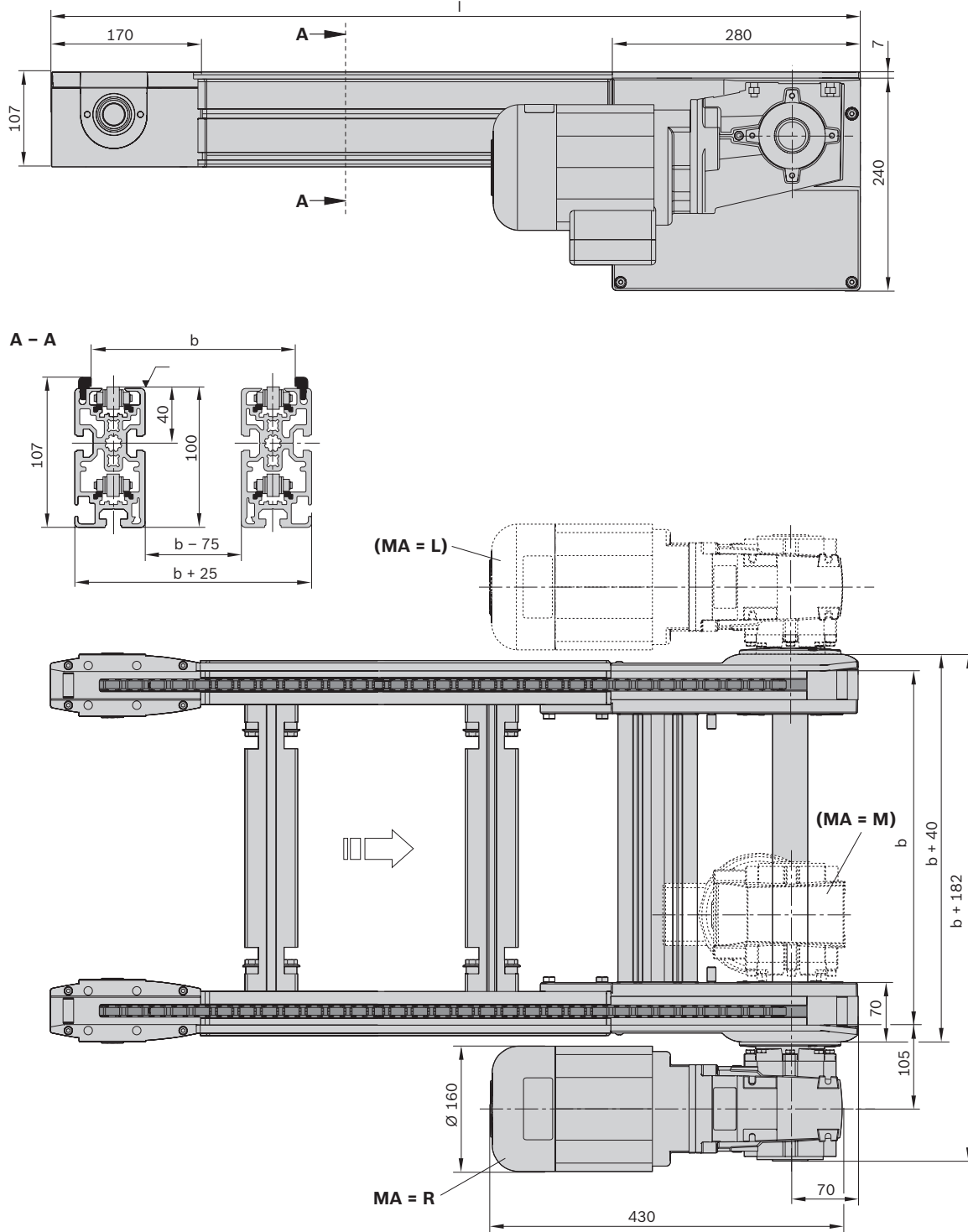
²⁾ Not possible if $f = 60$ Hz

³⁾ RV = 1 possible when $l \leq 2000$ mm and section loads < 400 kg;
no reversible operation for chains with small parts protection (KT = 3, 4)

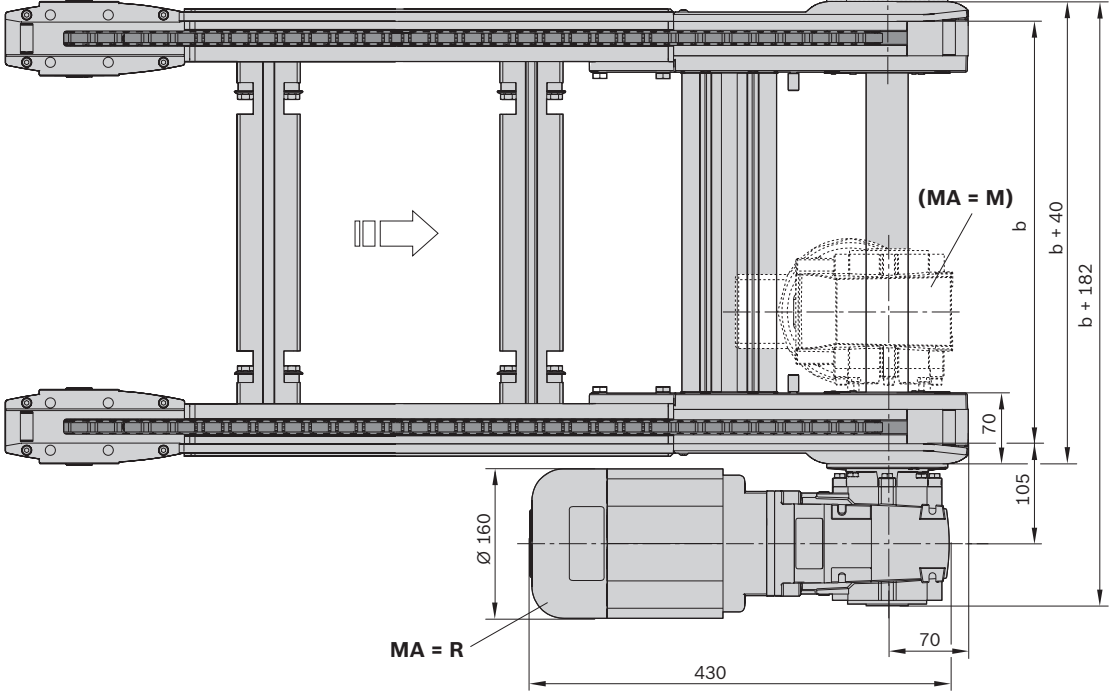
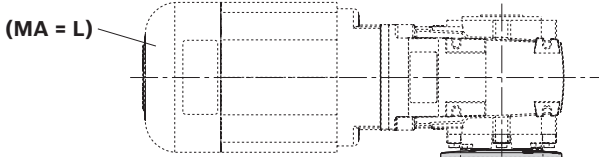
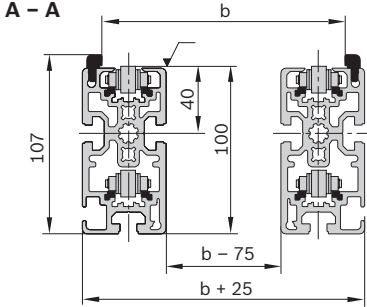
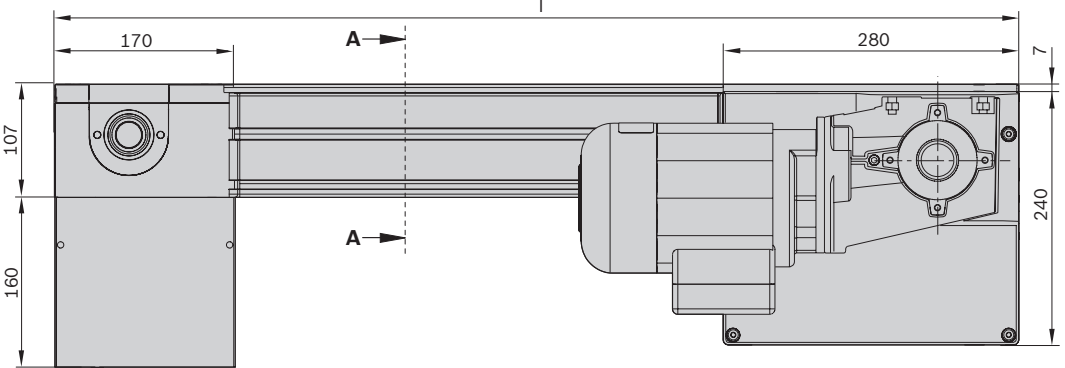
Technical data

Material number		3842998238
Load		
Max. section load in accumulation operation	kg	1200
Features		
ESD		Yes
Material specification		Section profile: Aluminum, natural; anodized Glide profile Polyamide or steel; corrosion-resistant Chain: Polyamide or steel accumulation rollers Small parts protection: Polyamide
Dimensions		
Length	l	mm 650 ... 6000

BS 2/R-H belt section dimensions



BS 2/R-H belt section dimensions with chain tensioner



BS 2/C+R connection belt



- Conveyor medium: Toothed belt (suitable for use in an EPA)

The head-to-head connection of the drive and return heads results in short, non-driven sections. The connection belt is

used to bridge these > 180 mm conveyor trenches by using short $l_{WT} < 320$ mm workpiece pallets.

Delivery notes

Condition on delivery

- Fully assembled

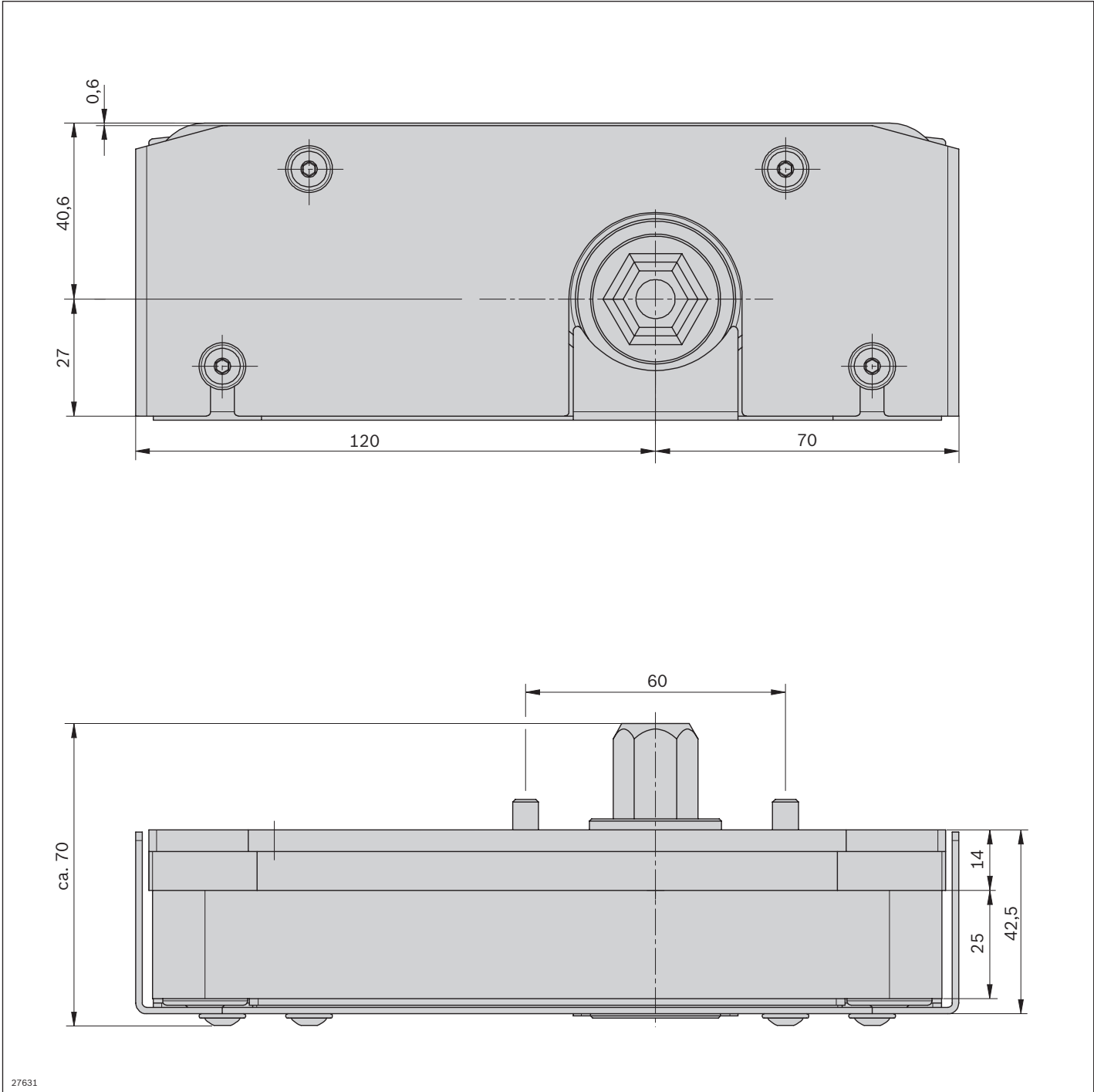
Ordering information

Product designation	Material number
Connection belt, left	3842528480
Connection belt, right	3842539096

Technical data

Material number	3842528480	3842539096
Features		
ESD	Yes	Yes

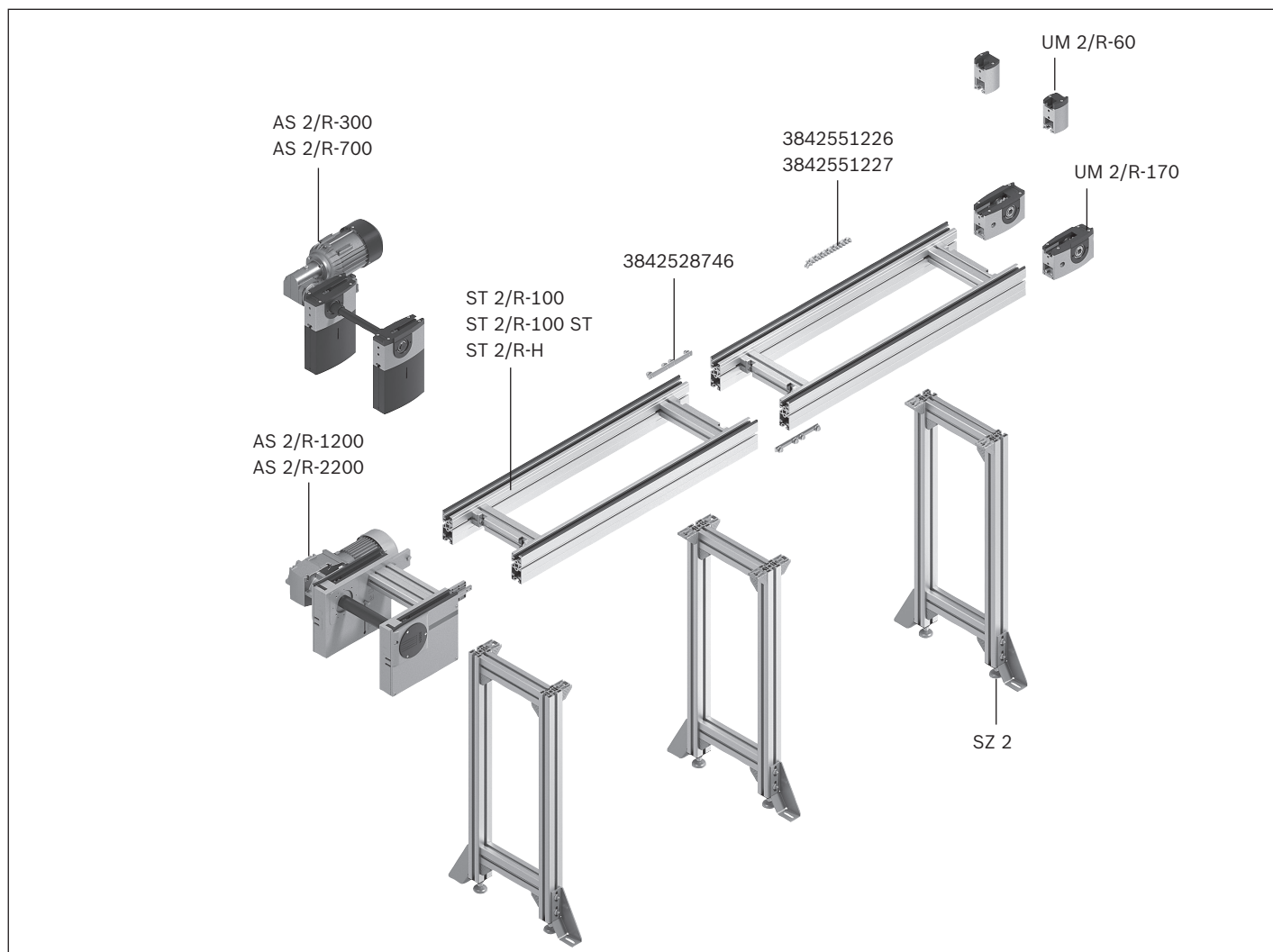
Dimensions





Conveyor units

Accumulation roller chain conveyor medium



A conveyor unit is a complete unit used for linear conveying of workpiece pallets. It consists of:

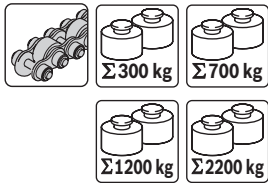
- ▶ AS 2/R drive module, see p. 3-136
- ▶ UM 2/R return unit, see p. 3-148
- ▶ ST 2/R... sections, see p. 3-154
- ▶ SZ 2/... leg sets, see p. 6-2

The UM 2/R and AS 2/R may be set up right next to each other, which allows for conveyor unit combinations.

Drive modules for loads up to $m_G = 300$ kg; 700 kg; 1200 kg, or up to $m_G = 2200$ kg per conveyor unit.



AS 2/R drive module



3-136



UM 2/R return unit



3-148



ST 2/R section, components



3-154



Accumulation roller chain conveyor medium, accessories



3-183

AS 2/R-300 drive module



- ▶ For conveyor unit self-assembly
- ▶ For use with UM 2 return units and ST 2 sections
- ▶ Conveyor medium: Accumulation roller chain (suitable for use in an EPA)
- ▶ Reversible operation possible for $l \leq 2000$ mm and accumulation roller chains without small parts protection
- ▶ Right, left or central motor mounting (central from track width of 240 mm)
- ▶ Motor connection: optionally with cable/plug or terminal box
- ▶ Special models on request

The AS 2/R... drive module drives the accumulation roller chain conveyor medium in self-built conveyor section

elements with section, return unit and accumulation roller chain.

Accessories

Recommended accessories

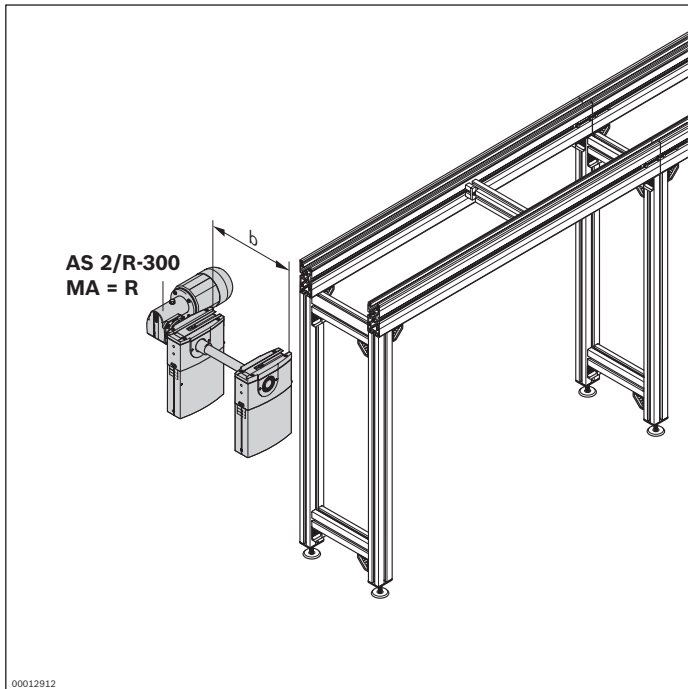
- ▶ LU 2 automatic lubrication unit, see p. 3-152

Delivery notes

Condition on delivery

- ▶ Fully assembled

Ordering information



Material number		3842998052
b (mm)	Track width in direction of transport	160; 240; 320; 400; 480; 640; 800; 1040; 1200 160 ... 1200 ¹
v_N (m/min)	Nominal speed	0 ² ; 6; 9; 12; 15; 18
U (V)	Voltage	See motor data, p. 11-24ff
f (Hz)	Frequency	See motor data, p. 11-24ff
AT	Motor connection S = cable/plug K = terminal box	S; K
MA	Motor mounting R = right L = left M = center	R; L; M ³
RV	Reversible operation No reversible operation (RV = 0) Reversible operation (RV = 1)	0; 1 ⁴

¹) Individual width variants available

²) $v_N = 0$: without motor or gear

³) MA = M only when $b \geq 240$ mm

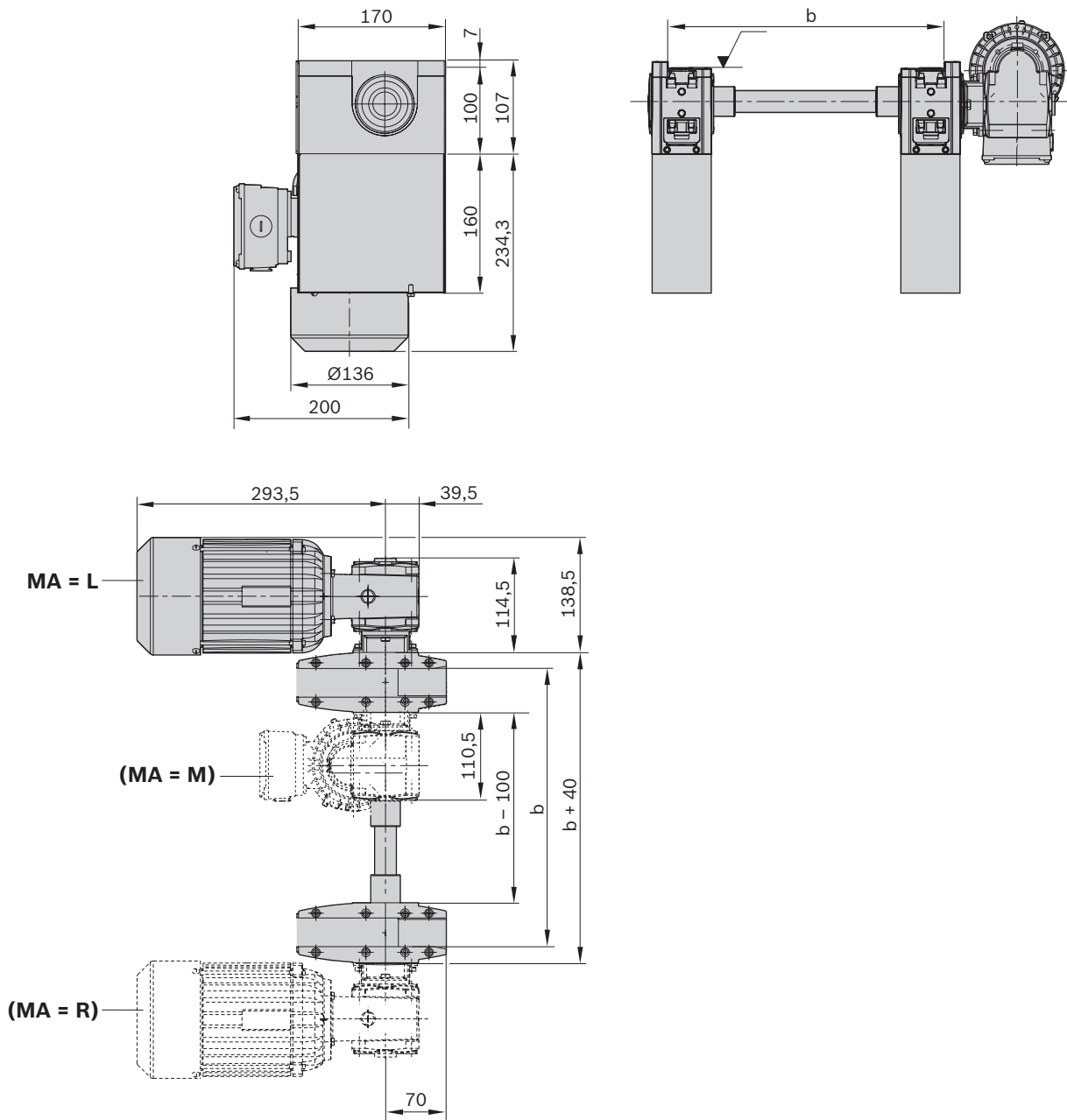
⁴) RV = 1 possible when $l \leq 2000$ mm; no reversible operation for chains with small parts protection (KT = 3, 4)

Technical data

Material number		3842998052
Load		
Max. section load in accumulation operation	kg	300
Features		
ESD		Yes
Additional information		
Required conveyor medium length*	l_{AS}	mm 475

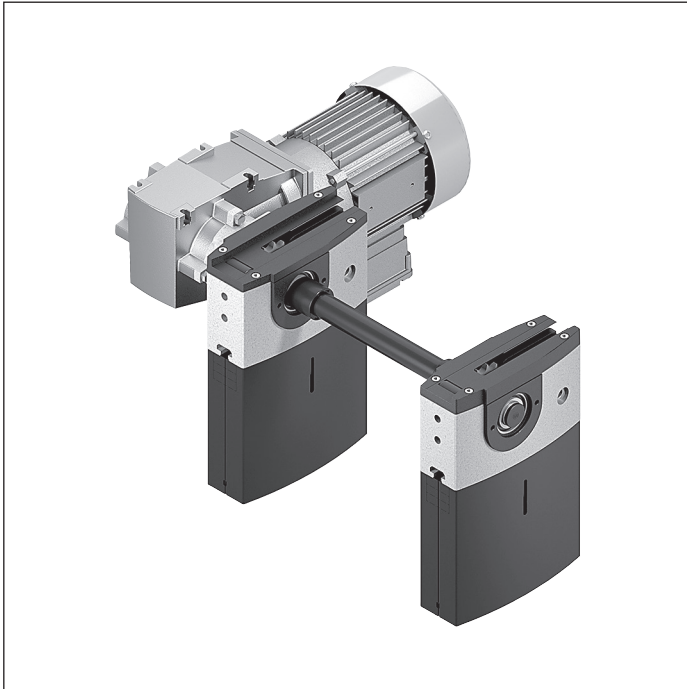
* Formula for calculating the conveyor medium, see p. 3-184/3-186

Dimensions



00013212

AS 2/R-700 drive module



- ▶ For conveyor unit self-assembly
- ▶ For use with UM 2 return units and ST 2 sections
- ▶ Conveyor medium: Accumulation roller chain (suitable for use in an EPA)
- ▶ Motor mounting right or left
- ▶ Motor connection: optionally with cable/plug or terminal box
- ▶ Special models on request

The AS 2/R... drive module drives the accumulation roller chain conveyor medium in self-built conveyor section

elements with section, return unit and accumulation roller chain.

Accessories

Recommended accessories

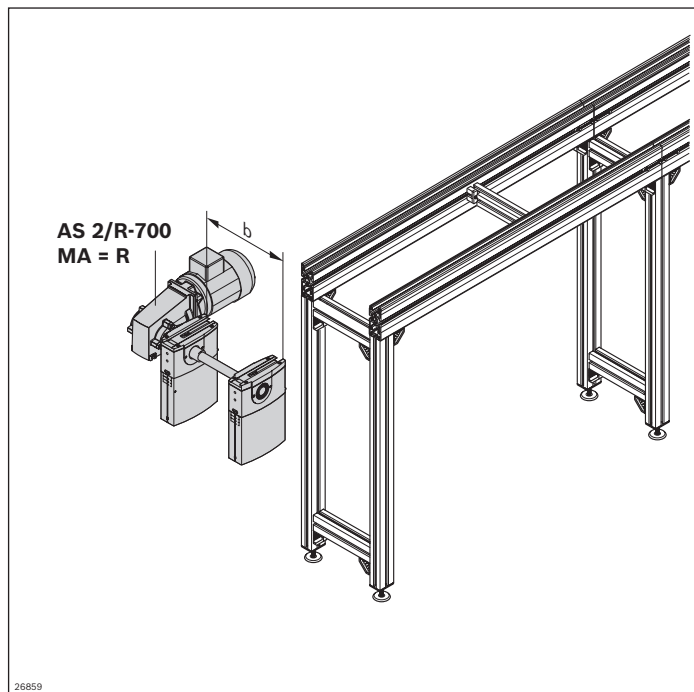
- ▶ LU 2 automatic lubrication unit, see p. 3-152

Delivery notes

Condition on delivery

- ▶ Fully assembled

Ordering information



Material number		3842998072
b (mm)	Track width in direction of transport	160; 240; 320; 400; 480; 640; 800; 1040; 1200 160 ... 1200 ¹⁾
v _N (m/min)	Nominal speed	0 ²⁾ ; 6; 9; 12; 15; 18
U (V)	Voltage	See motor data, p. 11-24ff
f (Hz)	Frequency	See motor data, p. 11-24ff
AT	Motor connection S = cable/plug K = terminal box	S; K
MA	Motor mounting R = right L = left	R; L

¹⁾ Individual width variants available

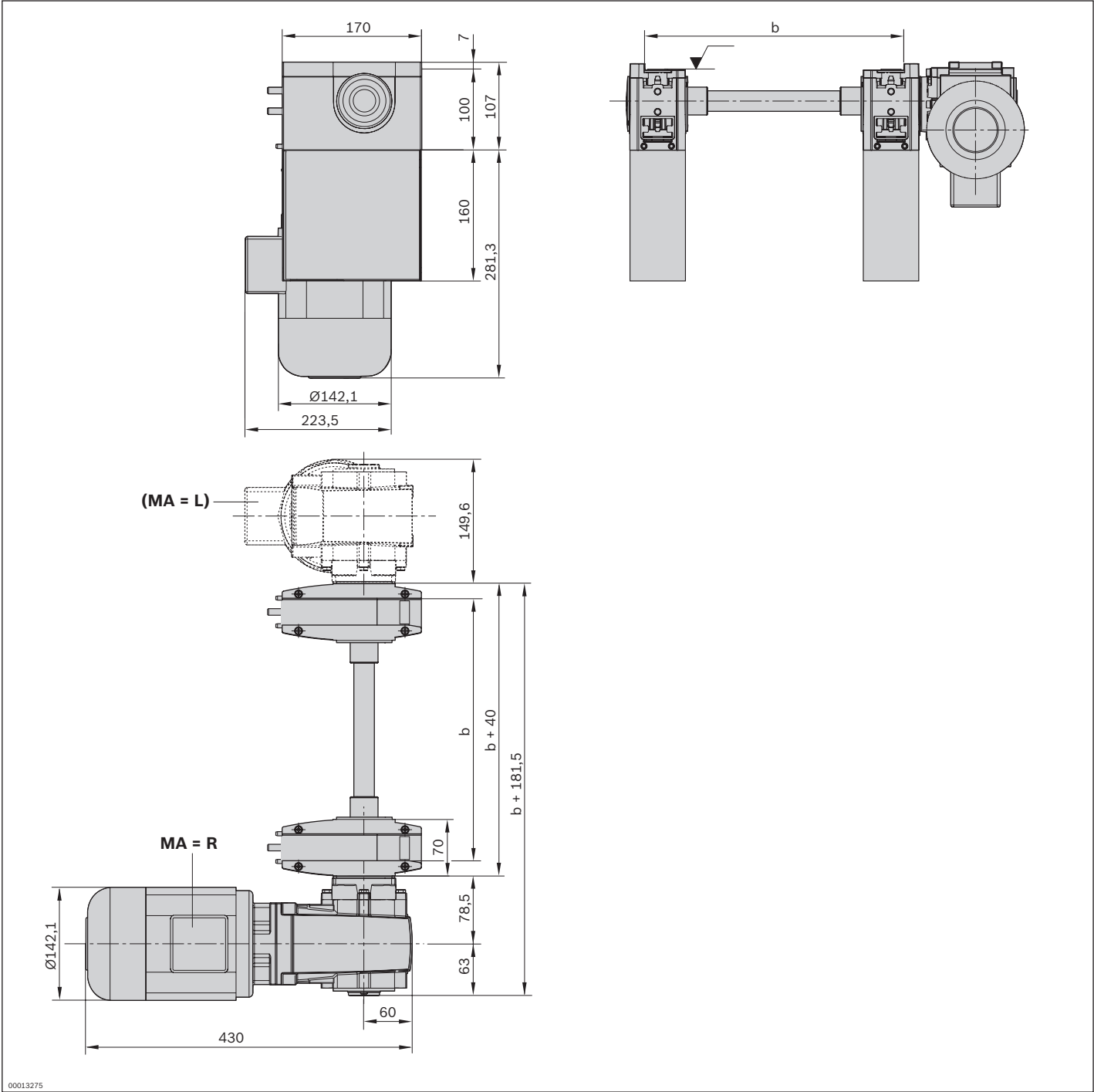
²⁾ v_N = 0: without motor or gear

Technical data

Material number		3842998072
Load		
Max. section load in accumulation operation	kg	700
Features		
ESD		Yes
Additional information		
Required conveyor medium length* I _{AS}	mm	475

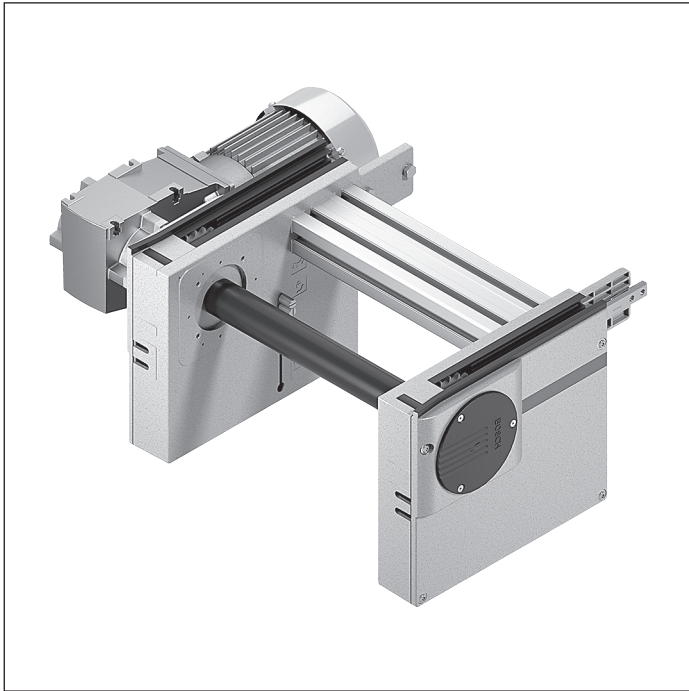
* Formula for calculating the conveyor medium, see p. 3-184/3-186

Dimensions



00013275

AS 2/R-1200 drive module



- ▶ For conveyor unit self-assembly
- ▶ For use with UM 2 return units and ST 2 sections
- ▶ Conveyor medium: Accumulation roller chain (suitable for use in an EPA)
- ▶ Right, left or central motor mounting (central from track width of 240 mm)
- ▶ Motor connection: optionally with cable/plug or terminal box
- ▶ Special models on request

The AS 2/R... drive module drives the accumulation roller chain conveyor medium in self-built conveyor section

elements with section, return unit and accumulation roller chain.

Accessories

Recommended accessories

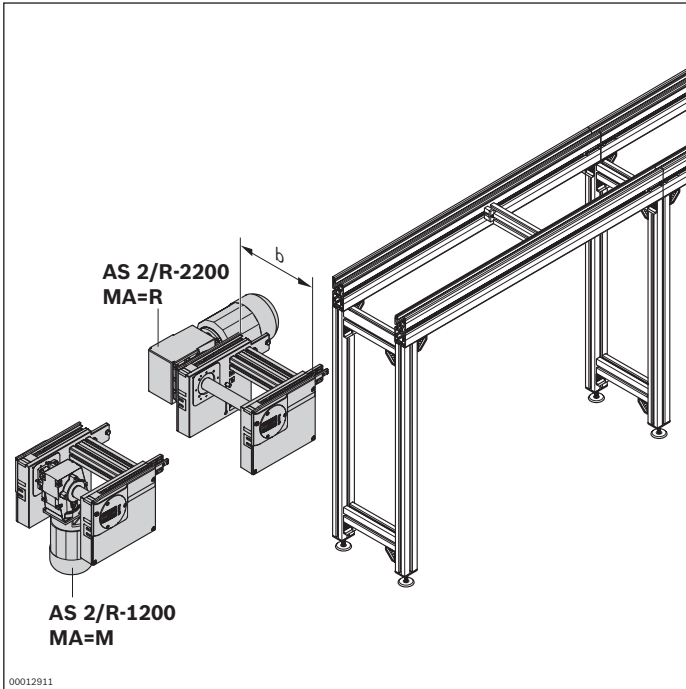
- ▶ LU 2 automatic lubrication unit, see p. 3-152

Delivery notes

Condition on delivery

- ▶ Fully assembled

Ordering information



Material number		3842998040
b (mm)	Track width in direction of transport	160; 240; 320; 400; 480; 640; 800; 1040; 1200 160 ... 1200 ¹
v _N (m/min)	Nominal speed	0 ² ; 6; 9; 12; 15; 18 ³
U (V)	Voltage	See motor data, p. 11-24ff
f (Hz)	Frequency	See motor data, p. 11-24ff
AT	Motor connection S = cable/plug K = terminal box	S; K
MA	Motor mounting R = right L = left M = center	R; L; M ⁴

¹) Individual width variants available

²) v_N = 0: without motor or gear

³) Not possible if f = 60 Hz

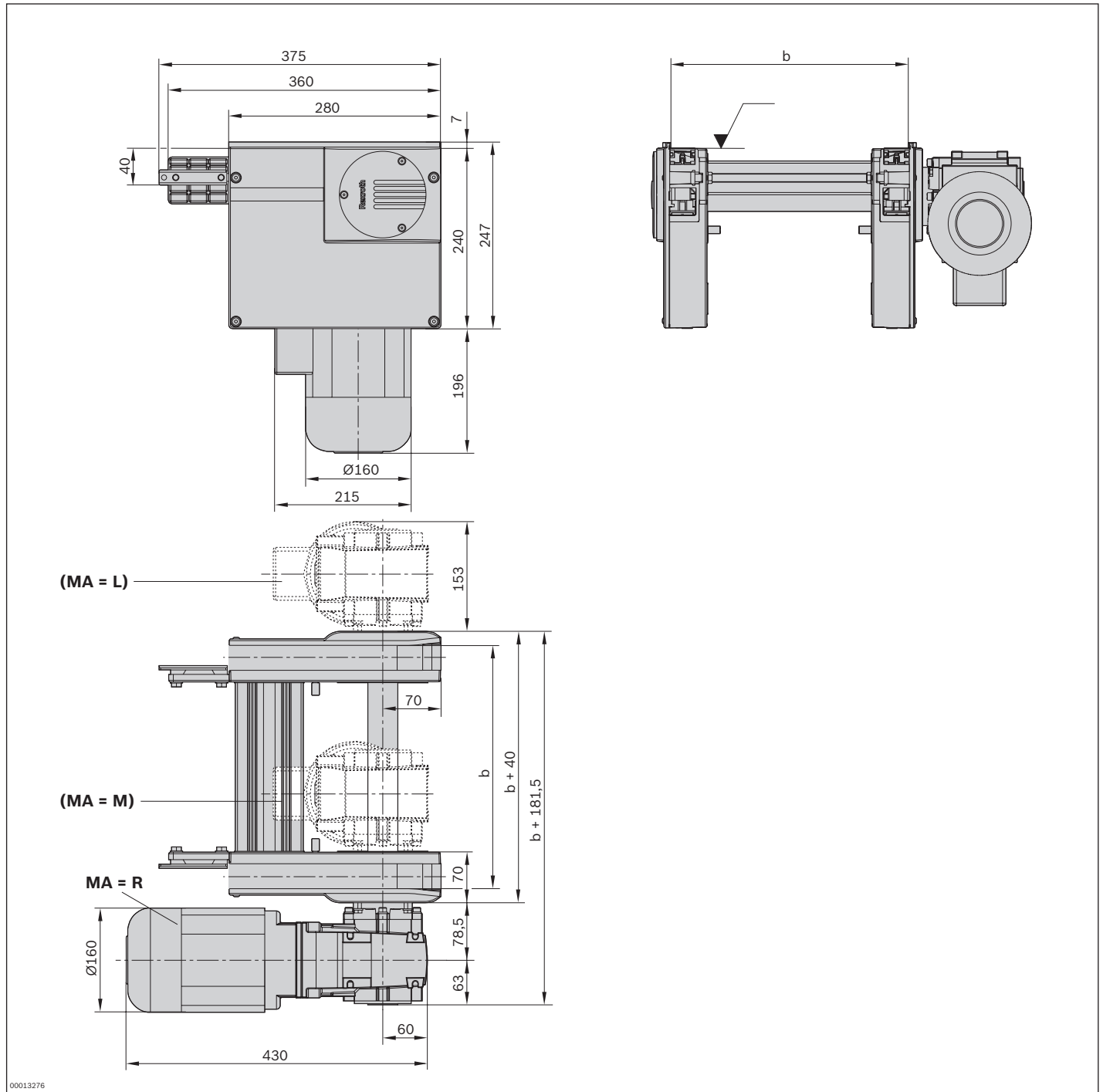
⁴) MA = M when b ≥ 240 mm

Technical data

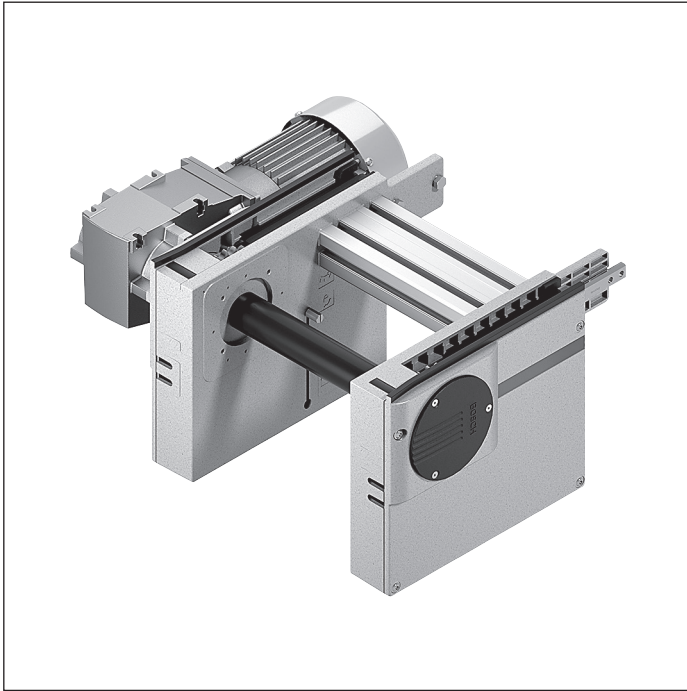
Material number		3842998040
Load		
Max. section load in accumulation operation	kg	1200
Features		
ESD		Yes
Additional information		
Required conveyor medium length*	l _{AS}	mm 625

* Formula for calculating the conveyor medium, see p. 3-184/3-186

Dimensions



AS 2/R-2200 drive module



- ▶ For conveyor unit self-assembly
- ▶ For use with UM 2 return units and ST 2 sections
- ▶ Conveyor medium: Accumulation roller chain (suitable for use in an EPA)
- ▶ Right, left or central motor mounting (central from track width of 240 mm)
- ▶ Motor connection: optionally with cable/plug or terminal box
- ▶ Special models on request

3

The AS 2/R... drive module drives the accumulation roller chain conveyor medium in self-built conveyor section

elements with section, return unit and accumulation roller chain.

Accessories

Recommended accessories

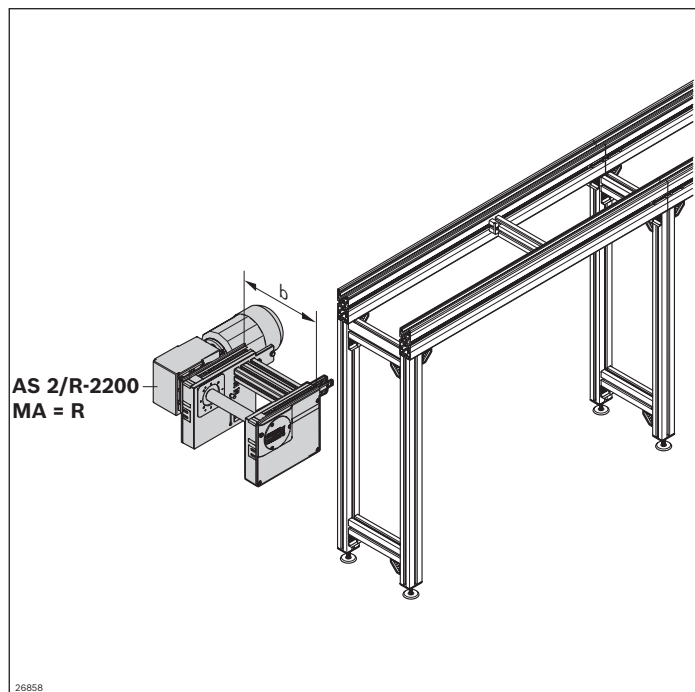
- ▶ LU 2 automatic lubrication unit, see p. 3-152

Delivery notes

Condition on delivery

- ▶ Fully assembled

Ordering information



Material number		3842998041
b (mm)	Track width in direction of transport	160; 240; 320; 400; 480; 640; 800; 1040; 1200 160 ... 1200 ¹
v _N (m/min)	Nominal speed	0 ² ; 6; 9; 12; 15; 18 ³
U (V)	Voltage	See motor data, p. 11-24ff
f (Hz)	Frequency	See motor data, p. 11-24ff
AT	Motor connection S = cable/plug K = terminal box	S; K
MA	Motor mounting R = right L = left M = center	R; L; M ⁴

¹) Individual width variants available

²) v_N = 0: without motor or gear

³) Reduced load to 1800 kg

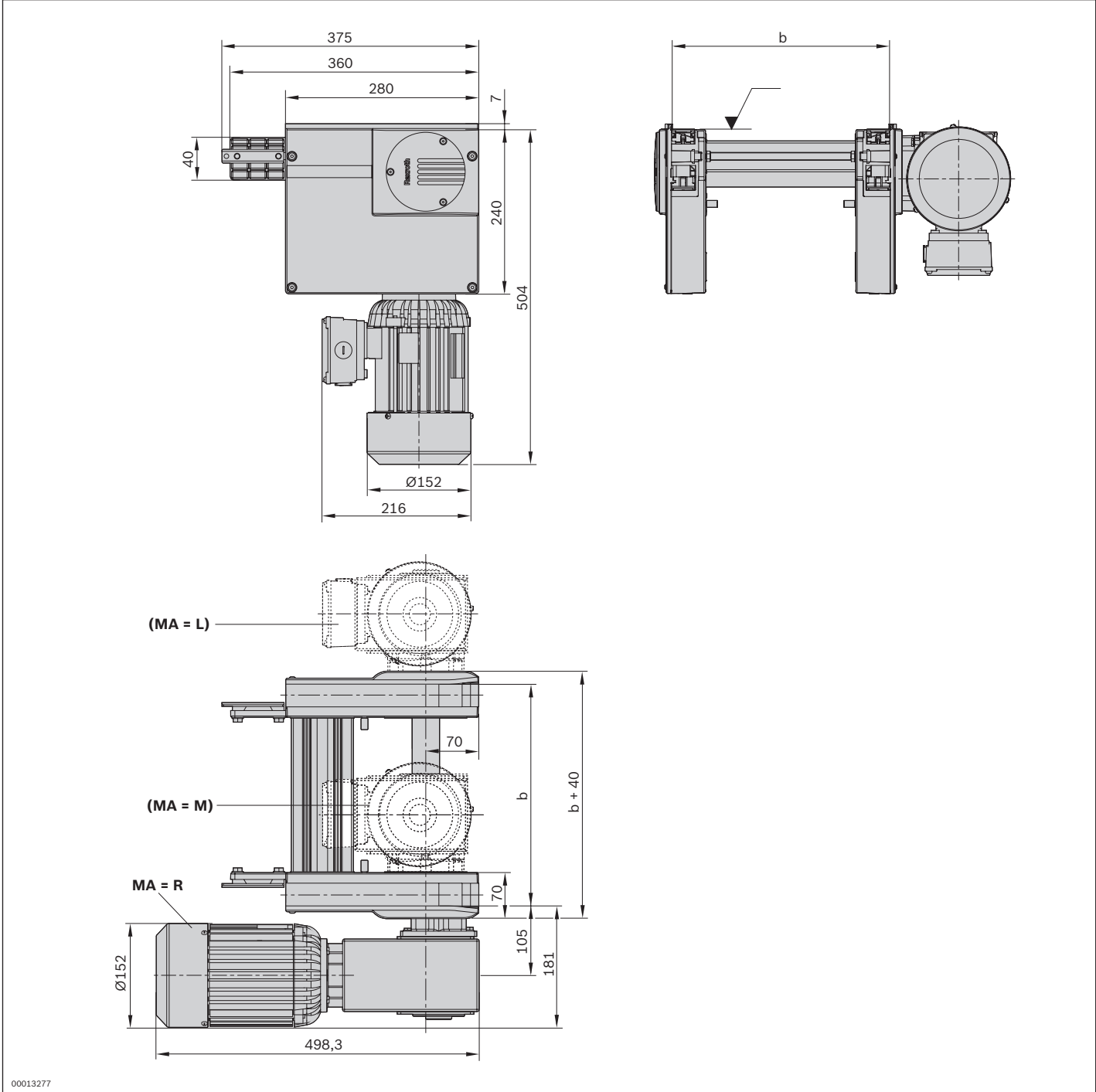
⁴) MA = M only when b ≥ 240 mm

Technical data

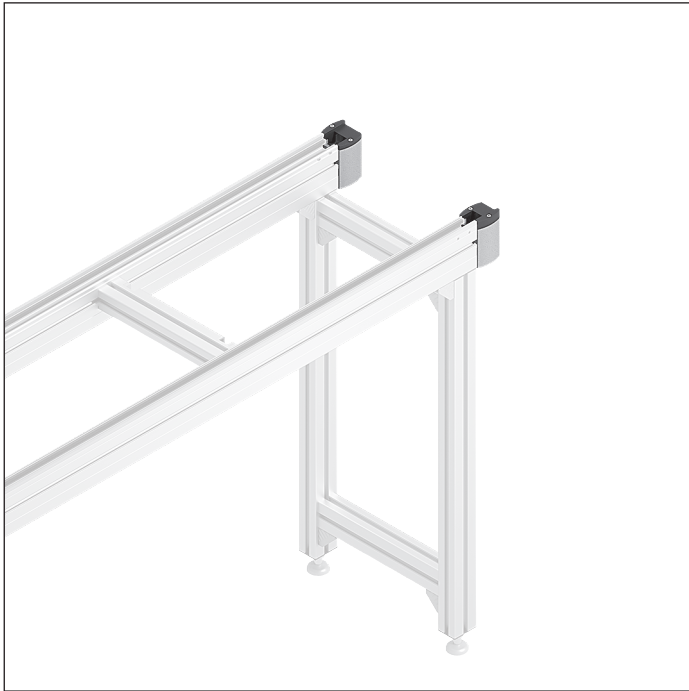
Material number		3842998041
Load		
Max. section load in accumulation operation	kg	2200
Features		
ESD		Yes
Additional information		
Required conveyor medium length*	l _{AS} mm	625

* Formula for calculating the conveyor medium, see p. 3-184/3-186

Dimensions



UM 2/R-60 return unit



- ▶ For conveyor unit self-assembly
- ▶ Conveyor medium: Accumulation roller chain (suitable for use in an EPA)
- ▶ For use in conjunction with all AS 2/R-... and ST 2/... sections
- ▶ Version with sliding piece for return
Recommended for sections up to $l = 6000$ mm

The return unit is used for constructing conveyor units. It guides the conveyor medium at the end of the conveyor unit back to the drive module.

Delivery notes

Scope of delivery

- ▶ One pair of return heads
- ▶ Incl. all fastening material to mount on an ST 2/R conveyor section

Condition on delivery

- ▶ Fully assembled

Ordering information

Product designation	Material number
UM 2/R-60 return unit	3842528803

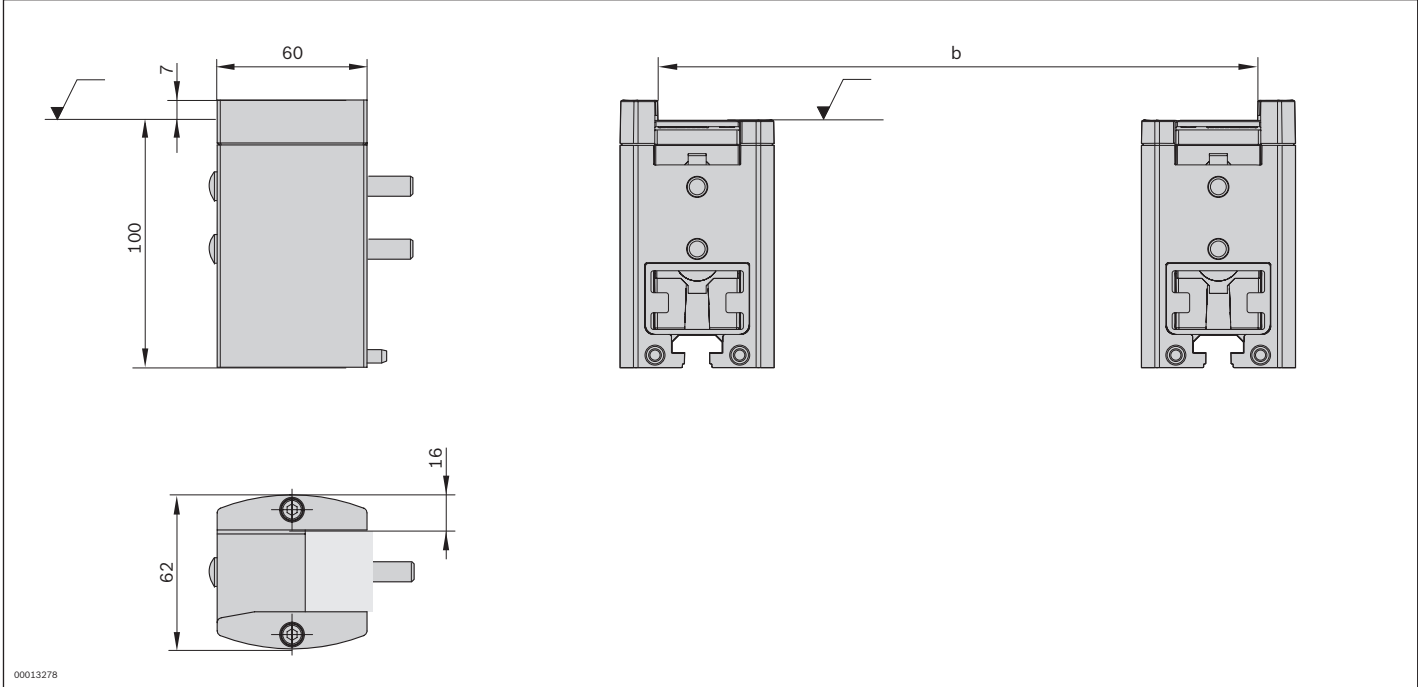
Technical data

Material number	3842528803
Features	
ESD	Yes

Additional information			
Required conveyor medium length*	l_{UM}	mm	150

* Formula for calculating the conveyor medium, see p. 3-184/3-186

Dimensions



UM 2/R-170 return unit



- ▶ For conveyor unit self-assembly
- ▶ Conveyor medium: Accumulation roller chain (suitable for use in an EPA)
- ▶ For use in conjunction with all AS 2/R-... and ST 2/... sections
- ▶ Version with pinion for return unit recommended for sections of $l \geq 6000$ mm or for sections of any length for reversible operation

The return unit is used for constructing conveyor units. It guides the conveyor medium at the end of the conveyor unit back to the drive module.

Delivery notes

Scope of delivery

- ▶ One pair of return heads
- ▶ Incl. all fastening material to mount on an ST 2/R conveyor section

Condition on delivery

- ▶ Fully assembled

Ordering information

Product designation	Material number
UM 2/R-170 return unit	3842528807

Technical data

Material number	3842528807
------------------------	-------------------

Features

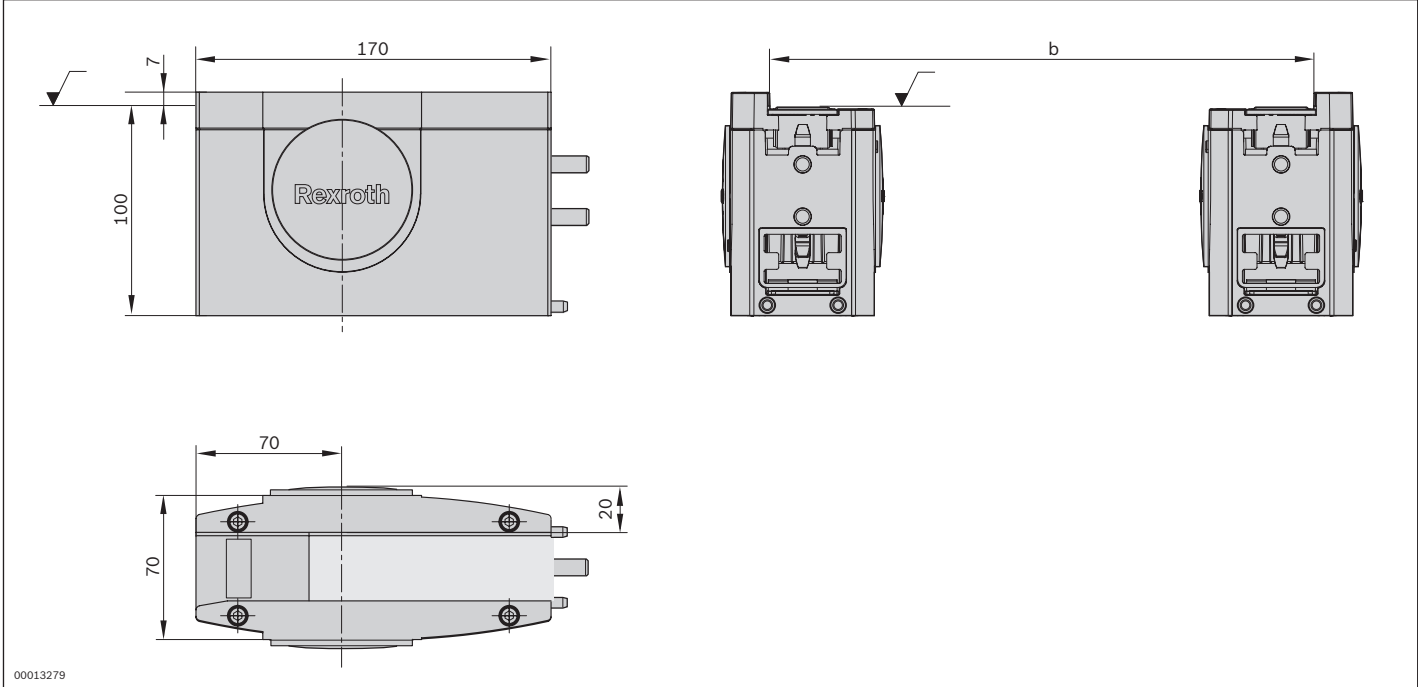
ESD	Yes
-----	-----

Additional information

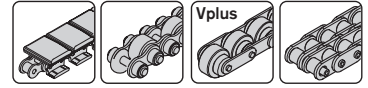
Required conveyor medium length*	l_{UM}	mm	310
----------------------------------	----------	----	-----

* Formula for calculating the conveyor medium, see p. 3-184/3-186

Dimensions



LU 2 automatic lubrication unit



- ▶ Modular design consisting of LU 2 automatic lubrication unit, LC 2 oil container and adapter set
- ▶ LU 2 automatic lubrication unit with drive, compressed air connection to drive module and fastening material
- ▶ LC 2 lubricant container with Structovis GHD from Klüber; contains: 0.25 l (must be ordered separately)
- ▶ Specific adapter sets with compatible lubrication pins for different drive modules
- ▶ Adjustment of lubrication amount to be distributed per metering process on the LU 2 automatic lubrication unit. The metering process is actuated by an external PLC.
- ▶ Designed for lubricating one belt section or conveyor unit respectively
- ▶ Use of the LU 2 automatic lubrication unit is highly recommended for flat top chains

Increasing the system service life through continuous and maintenance-free lubrication of flat top chains, accumulation roller chains, and duplex chains during operation.

For preventing dry running.

Accessories

Required accessories

- ▶ LC 2 lubricant container, see p. 3-153
- ▶ Adapter set, see p. 3-153

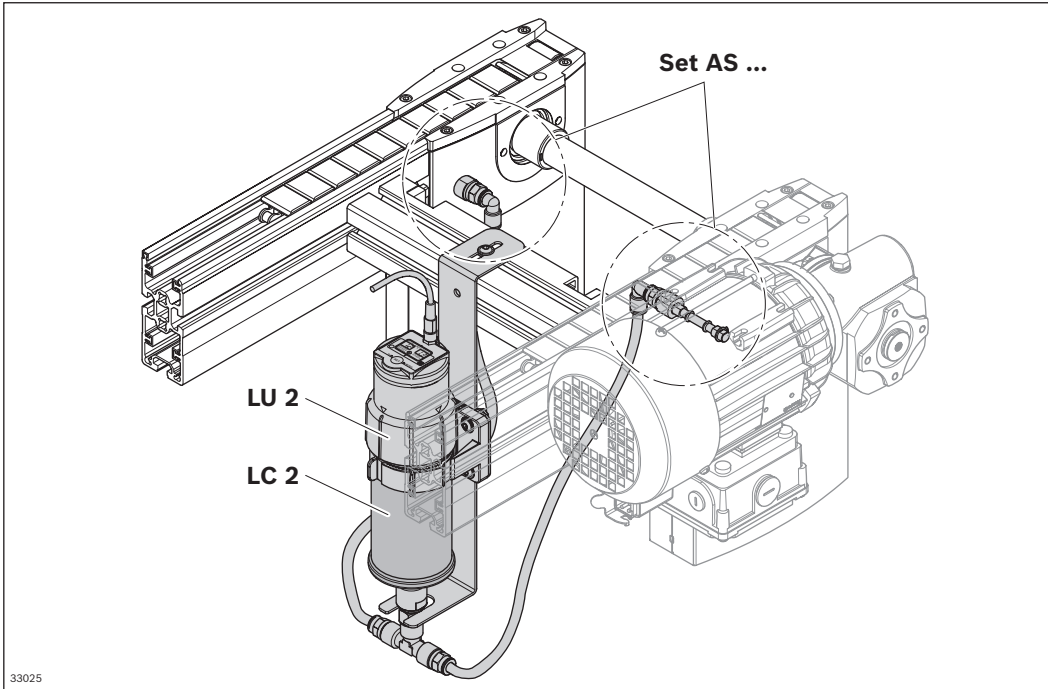
Delivery notes

Condition on delivery

- ▶ Not assembled, fastening material enclosed
- ▶ LC 2 lubricant container and adapter set as ordered

Suitable for use with all belt sections and conveyor units; lubrication unit on the drive module.

Reduction of lubricant consumption thanks to exact metering and pinpoint application to the chain links.



Ordering information

Product designation	Packaging unit	Material number
LU 2 automatic lubrication unit	1	3842543482
LC 2 lubricant container	4	3842543469

Product designation	Packaging unit	Material number
Adapter set for AS 2/C-100 AS 2/C-250 BS 2/C	1	3842543483
Adapter set for AS 2/C-400 (assembly on UM2/C-170 when b = 160 mm) AS 2/C-700 (assembly on UM2/C-170 when b = 160 mm) BS 2/C-H (assembly on UM2/C-170, UM 2/R-170 when b = 160 mm)	1	3842543484
Adapter set for AS 2/R-300 AS 2/R-700 BS 2/R BS 2/R-H with RV = 1*	1	3842543485
Adapter set for AS 2/R-1200 (assembly on UM2/R-170 when b = 160 mm) AS 2/R-2200 (assembly on UM2/R-170 when b = 160 mm) BS 2/R-H with RV = 0 (assembly on UM2/C-170, UM 2/R-170 when b = 160 mm)	1	3842543486
Adapter set for AS 2/R-V-1200 (assembly on UM2/R-170 when b = 160 mm) AS 2/R-V-2200 (assembly on UM2/R-170 when b = 160 mm) BS 2/R-V-1200 (assembly on UM2/R-170 when b = 160 mm)	1	3842543487
Adapter set for HQ 2/U-H	1	3842548578

* Assembly on UM return unit

Technical data

Material number	3842543482		
Features			
ESD			Yes
Max. operating temperature	T	°C	+40

Section, section profiles



Sections can be individually configured for special requirements by selecting various section, glide, and guide profiles.

Depending on the load spectrum of the conveyor medium, stainless steel or plastic glide profiles can be inserted in the section profile. Use of steel glide profiles increases resistance to wear and temperature. This opens up new areas of application for the TS 2plus.

The proven SP 2/R-100 profiles are primarily suitable for medium to high loads in simple system layouts.

Especially suited for high strains and loads, the new, sturdy SP 2/R-H section profiles have been developed for accumulator roller chains. In addition to a more robust profile cross section and improvements to details (integrated cable duct), the use of stainless steel in the guide profile enhances the system. An adapter plate not only enables visually attractive mounting of the SP 2/R-H section profiles with drive modules in the TS 2plus, it also securely keeps the glide profiles (sliding guides) from shifting.

ST 2/R-100 section



- ▶ For conveyor unit self-assembly
- ▶ For use in conjunction with AS 2/R drive modules and UM 2/R return units
- ▶ GP 2 plastic glide profile
- ▶ Pre-assembled unit for quick setup

3

The section is used for the construction of conveyor units in conjunction with the AS 2/R drive modules and the UM 2/R return units.

Accessories

Recommended accessories

- ▶ SZ 2/... leg sets, see page 6-2
- ▶ Cross connector, see p. 3-216
- ▶ Profile connector, see p. 3-215

Delivery notes

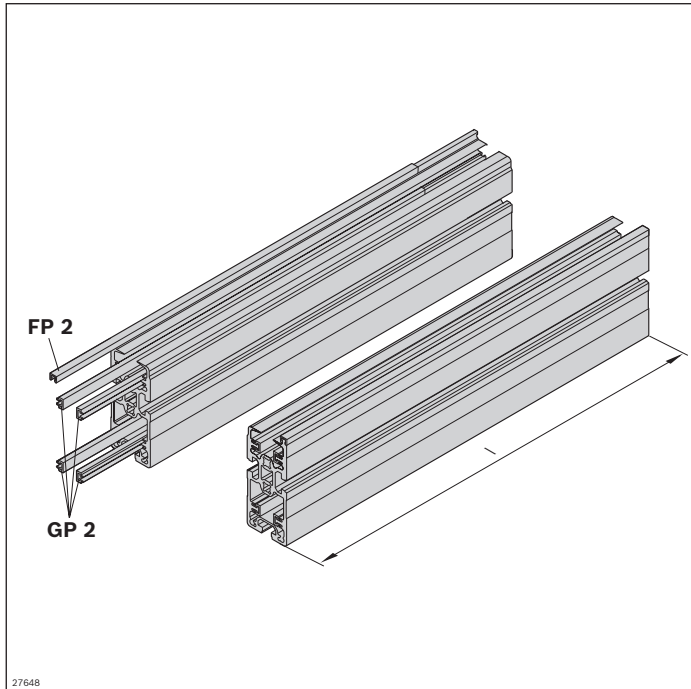
Scope of delivery

- ▶ 2x SP 2/R section profiles with assembled FP 2 and GP 2 guide profiles and glide profiles

Condition on delivery

- ▶ Fully assembled

Ordering information

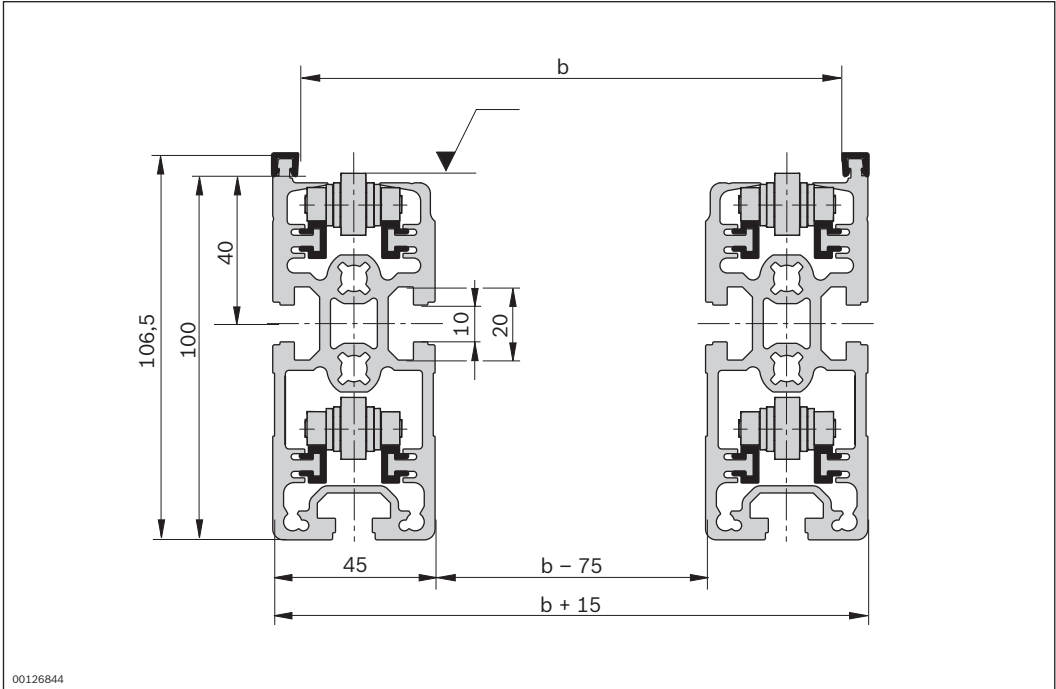


Material number		3842994889
l (mm)	Length	60 ... 6000

Technical data

Material number		3842994889	
Features			
Material specification		Glide profile: Polyamide (PA) Guide profile: Polyamide Section profile: Aluminum, natural; anodized	
Max. operating temperature	T	°C	+40
Dimensions			
Length	l	mm	60 ... 6000

Dimensions



00126844

ST 2/R-100 ST section



- ▶ For conveyor unit self-assembly for higher section loads
- ▶ For use in conjunction with AS 2/R drive modules and UM 2/R return units

The section is used for the construction of conveyor units in conjunction with the AS 2/R drive modules and the UM 2/R return units.

Accessories

Recommended accessories

- ▶ SZ 2/... leg sets, see page 6-2
- ▶ Cross connector, see p. 3-216
- ▶ Profile connector, see p. 3-215

Delivery notes

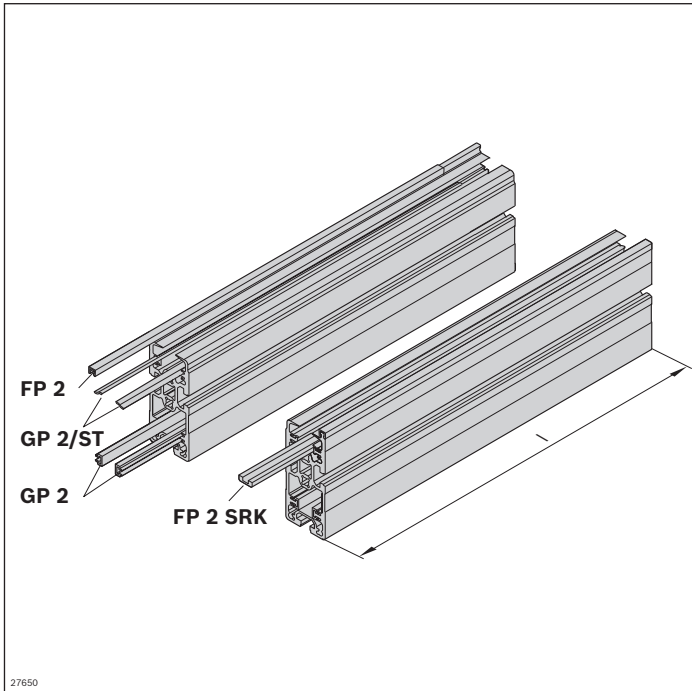
Scope of delivery

- ▶ 2x SP 2/R section profiles with assembled FP 2, FP 2 SRK and GP 2/ST guide profiles and glide profiles

Condition on delivery

- ▶ Fully assembled

Ordering information

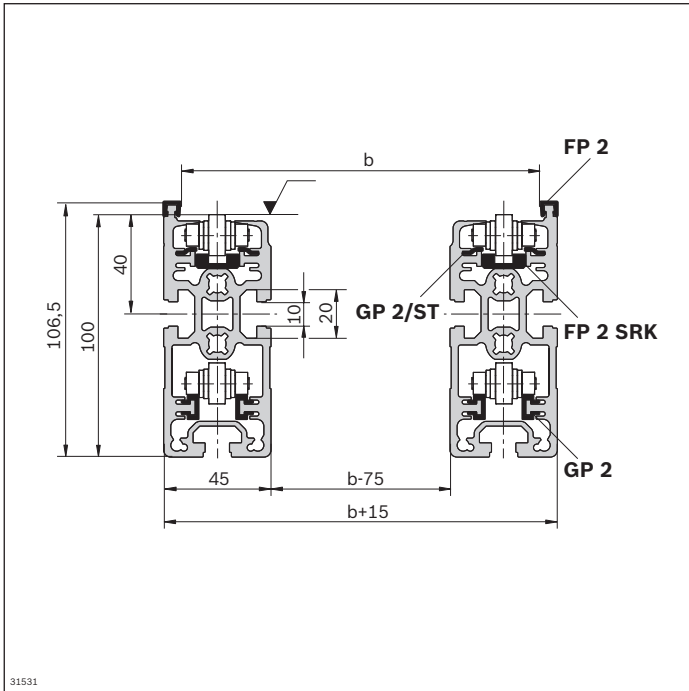


Material number	3842994907		
l (mm)	Length	60 ... 6000	

Technical data

Material number	3842994907		
Features			
Material specification	GP 2/ST glide profile Steel GP 2 glide profile: PA 12 Guide profile FP 2: PA 12 Accumulation roller chain FP 2 chain guide profile: PE Section profile: Aluminum, natural; anodized		
Max. operating temperature	T	°C	+40
Dimensions			
Length	l	mm	60 ... 6000

Dimensions



ST 2/R-H section



- ▶ For conveyor unit self-assembly
- ▶ For use in conjunction with AS 2/R drive modules and UM 2/R return units
- ▶ Section profile in especially sturdy design for section loads of up to 30% higher
- ▶ Optional steel or plastic GP 2 glide profiles

3

The section is used for the construction of heavy-duty conveyor units in conjunction with the AS 2/R drive modules and the UM 2/R return units.

Accessories

Required accessories

- ▶ ST 2/R-H adapter plate kit, see p. 3-171 If GP = 0, then adapter plates are to be fitted between each section joint

Delivery notes

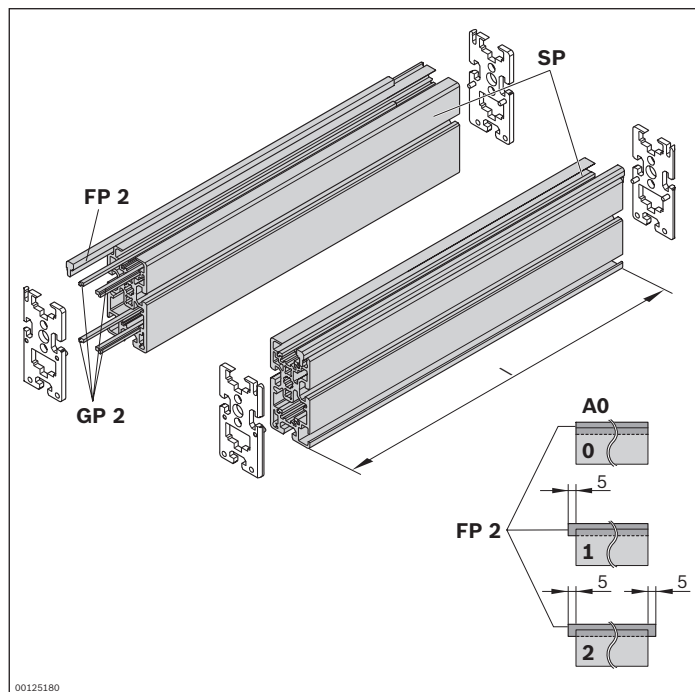
Scope of delivery

- ▶ 2x SP 2/R-H section profiles with assembled FP 2 and GP 2 guide profiles and glide profiles

Recommended accessories

- ▶ SZ 2/...-H leg sets, see p. 6-2
- ▶ Cross connector, see p. 3-216
- ▶ Profile connector, see p. 3-215
- ▶ Cover rail for cable duct, see p. 3-213

Ordering information

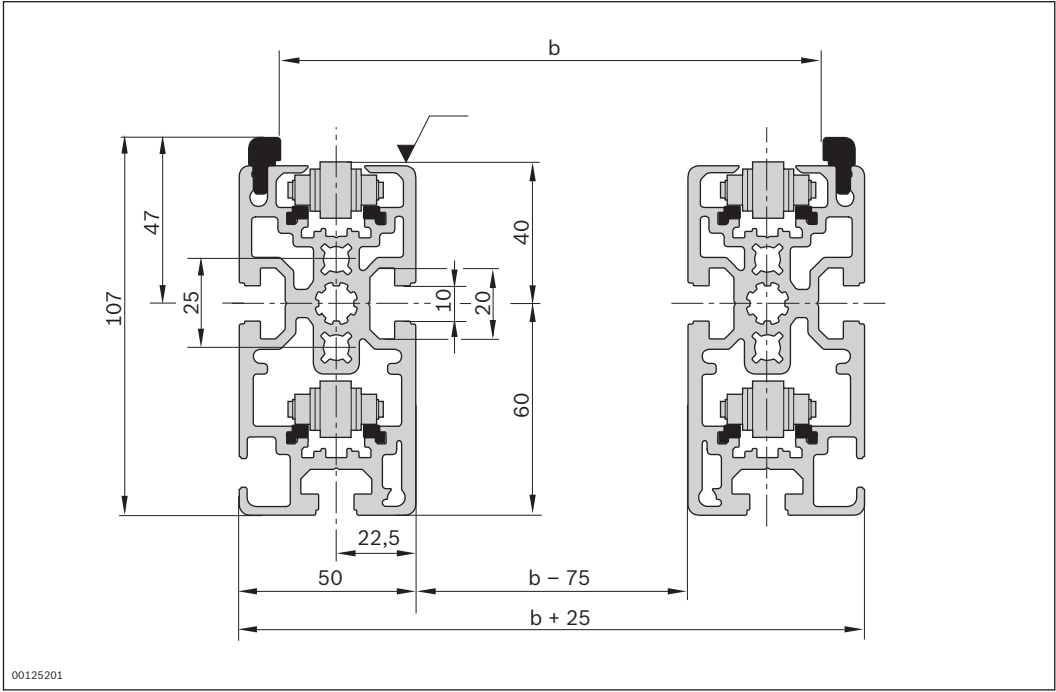


Material number		3842994972
l (mm)	Length	200 ... 6000
AO	Installation location Plastic glide profile AO = 2 Steel glide profile AO = 0; 1; 2	0; 1; 2
GP	Glide profile Corrosion-resistant steel (GP = 1) Plastic (GP = 0)	0; 1

Technical data

Material number		3842994972
Features		
Material specification		Section profile: Aluminum, natural; anodized Guide profile: Steel; corrosion-resistant Glide profile: Plastic or steel; corrosion-resistant
Dimensions		
Length	l	mm 200 ... 6000

Dimensions



Cover rail for cable duct



- ▶ To prevent dirt from entering the profile slot
- ▶ For fixing cables in position
- ▶ Flush with profile

Ordering information

Product designation	Packaging unit	Material number
Cover rail for cable duct	10	3842523258

Technical data

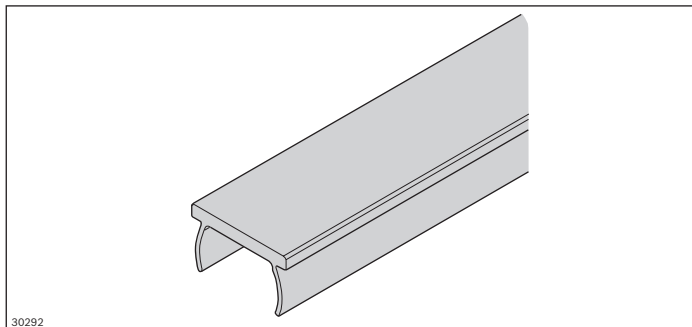
Material number	3842523258
------------------------	-------------------

Features

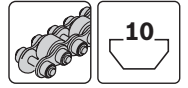
Material specification	Aluminum, natural; anodized
------------------------	-----------------------------

Dimensions

Length	l	mm	2000
--------	---	----	------



SP 2/R-100 section profile



- ▶ For conveyor unit self-assembly
- ▶ For use with all AS 2/R drive modules, UM 2/R return units, FP 2 guide profiles and GP 2 glide profiles
- ▶ Longitudinal grooves for easy mounting

3

The section profile is used to set up conveyor units with the accumulation roller chain conveyor medium.

Accessories

Required accessories

- ▶ FP 2 guide profile, see p. 3-167
- ▶ GP 2 glide profile, see p. 3-167

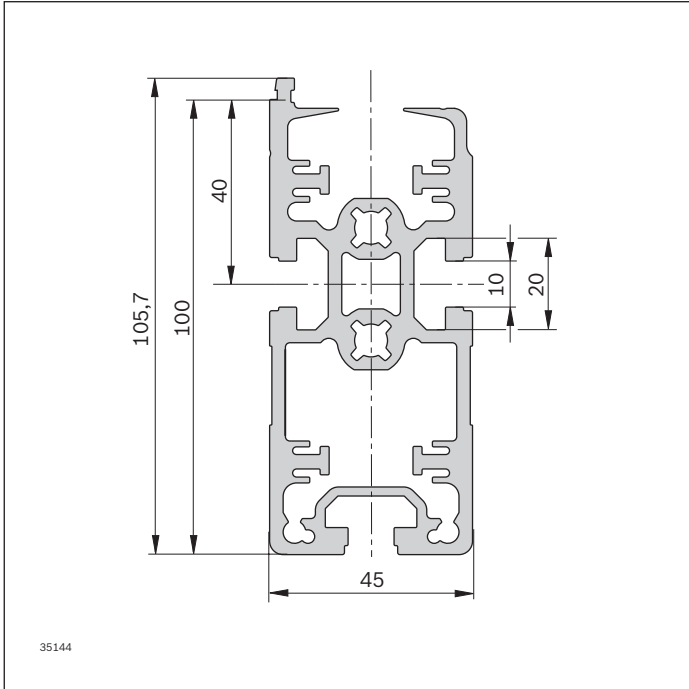
Ordering information

Product designation	l (mm)	Delivery unit	Material number
SP 2/R-100 16 x 6070 mm section profile	6070	16	3842529931

Technical data

Material number		3842529931	
Load			
Moment of inertia	I_x	cm ⁴	144.0
	I_y	cm ⁴	40.1
Moment of resistance	W_x	cm ³	27.7
	W_y	cm ³	17.8
Features			
Material specification			Aluminum, natural; anodized
Mass	m	kg/m	4.4
Dimensions			
Length	l	mm	6070
Profile surface	A	cm ²	16.4

Dimensions





FP 2 guide profile/GP 2 glide profile set

3



- ▶ For conveyor unit self-assembly
- ▶ For use with ST 2/R section profiles, AS 2/R drive modules and UM 2 /R return units
- ▶ FP 2 guide profile for laterally guiding the workpiece pallet; slid onto SP 2/R-100 section profile
- ▶ GP 2 glide profile for guiding the top flat chain; slid onto SP2/R-100 section profile

The guide profile is used for lateral guidance of the workpiece pallet. The glide profile is used to guide the

accumulation roller chain. Both profiles are pushed onto the section profile.

Delivery notes

Scope of delivery

- ▶ 16x FP 2 guide profile (L = 6000 mm)
- ▶ 64x GP 2 glide profiles (L = 6000 mm)

Ordering information

Product designation	l (mm)	Material number
FP 2 guide profile/GP 2 glide profile set	6000	3842529933

Technical data

Material number		3842529933	
Features			
ESD		Yes	
Material specification		Guide profile: Plastic; PA (suitable for use in an EPA) Glide profile: Plastic; PA (suitable for use in an EPA)	
Max. operating temperature	T	°C	+40
Dimensions			
FP 2 length	l	mm	6000
GP 2 length	l	mm	6000

Accumulation roller chain FP guide profile/GP 2/ST glide profile set



- ▶ For conveyor unit self-assembly
- ▶ Used in conjunction with ST 2/R section profiles, AS 2/R drive modules and UM 2 /R return units
- ▶ GP 2/ST glide profile for supporting the accumulation roller chain; enables higher permissible loads in conjunction with an accumulation roller chain with steel rollers
- ▶ Accumulation roller chain guide profile for lateral guiding of the accumulation roller chain in conjunction with GP 2/ST glide profile

Accessories

Required accessories

- ▶ FP 2 guide profile, see p. 3-167
- ▶ GP 2 glide profile, see p. 3-167

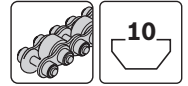
Ordering information

Product designation	l (mm)	Material number
Accumulation roller chain FP guide profile/GP 2/ST glide profile set	2000	3842532676
	3000	

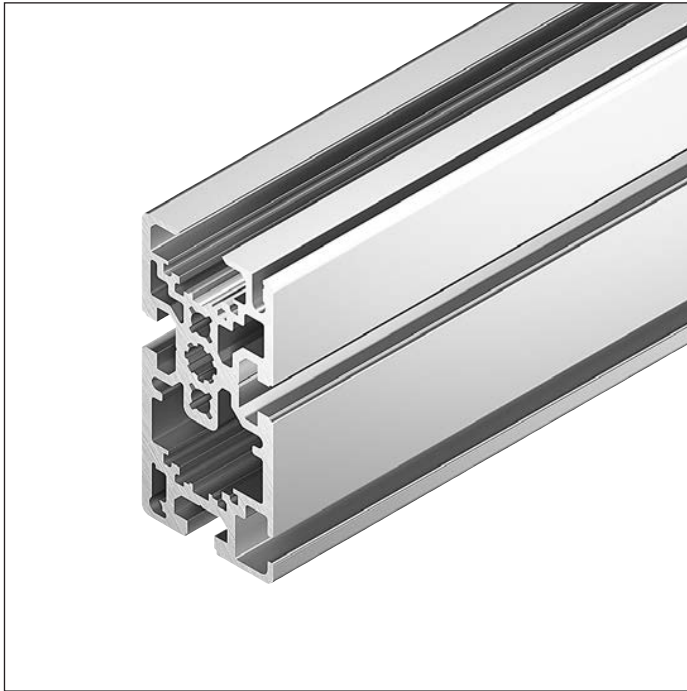
Technical data

Material number	3842532676		
Features			
ESD	Yes		
Material specification	Accumulation roller chain guide profile PE Glide profile: Steel; corrosion-resistant		
Dimensions			
Accumulation roller chain FP guide profile length	l	mm	2000
GP 2/ST length	l	mm	3000

SP 2/R-H section profile



3



- ▶ For conveyor unit self-assembly for higher section loads in the 100 mm construction height
- ▶ For use with all AS 2/R drive modules, UM 2/R return units, FP 2/H guide profiles, GP 2/H glide profiles and SP 2/R section profiles
- ▶ Longitudinal grooves for easy mounting
- ▶ Extruded aluminum profile with an especially sturdy design
- ▶ Integrated cable duct at the profile base

The section profile is used for constructing conveyor units with 100 mm construction height and with the

accumulation roller chain and guide profile conveyor media.

Accessories

Required accessories

- ▶ Cover rail for cable duct, see p. 3-164
- ▶ FP 2/H-St guide profile, see p. 3-173

- ▶ GP 2/H-St and GP 2/H-Kst glide profiles, see p. 3-174/3-175
- ▶ ST 2/R-H adapter plate kit, see p. 3-171

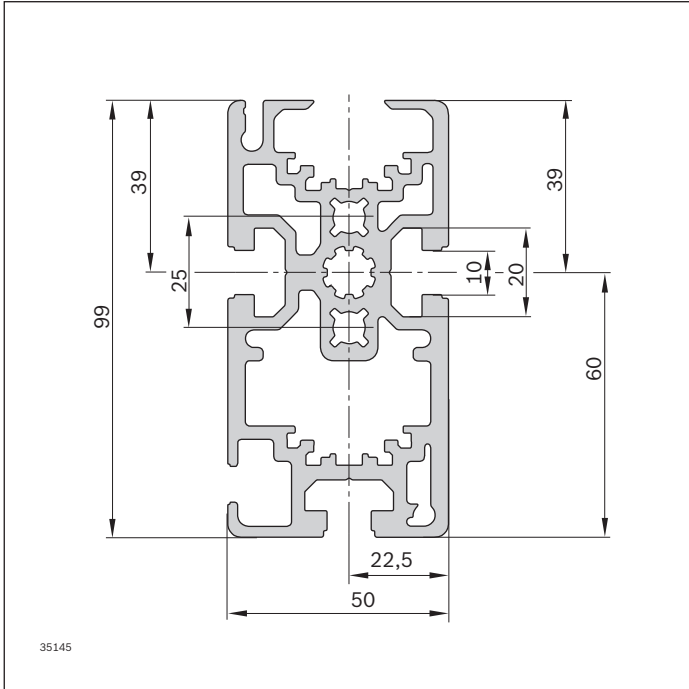
Ordering information

Product designation	l (mm)	Delivery unit	Material number
SP 2/R-H 12 x 6070 mm section profile	6070	12	3842536792

Technical data

Material number		3842536792	
Load			
Moment of inertia	I_x	cm ⁴	155.6
	I_y	cm ⁴	51.3
Moment of resistance	W_x	cm ³	31.6
	W_y	cm ³	19.8
Features			
Material specification		Aluminum; anodized	
Mass	m	kg/m	5.2
Dimensions			
Length	l	mm	6070
Profile surface	A	cm ²	19.0

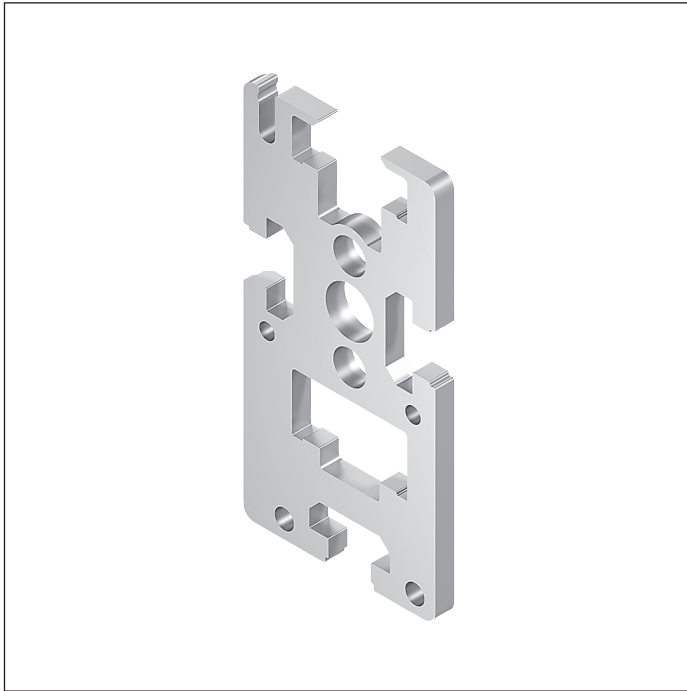
Dimensions



ST 2/R-H adapter plate kit



3



- ▶ Front end plate
- ▶ For connecting SP 2/R-H section profiles and AS 2/R drive modules;
for connecting SP 2/R-H profiles and UM 2/R return units;
and between section profiles if GP 2 plastic glide profiles are used

The adapter plates are used as front covers and for connecting section profiles and drive modules, or between section profiles and return units.

The adapter plates are also suitable for use between section profiles where GP 2 plastic glide profiles are used.

Delivery notes

Scope of delivery

- ▶ 2x left adapter plate
- ▶ 2x right adapter plate

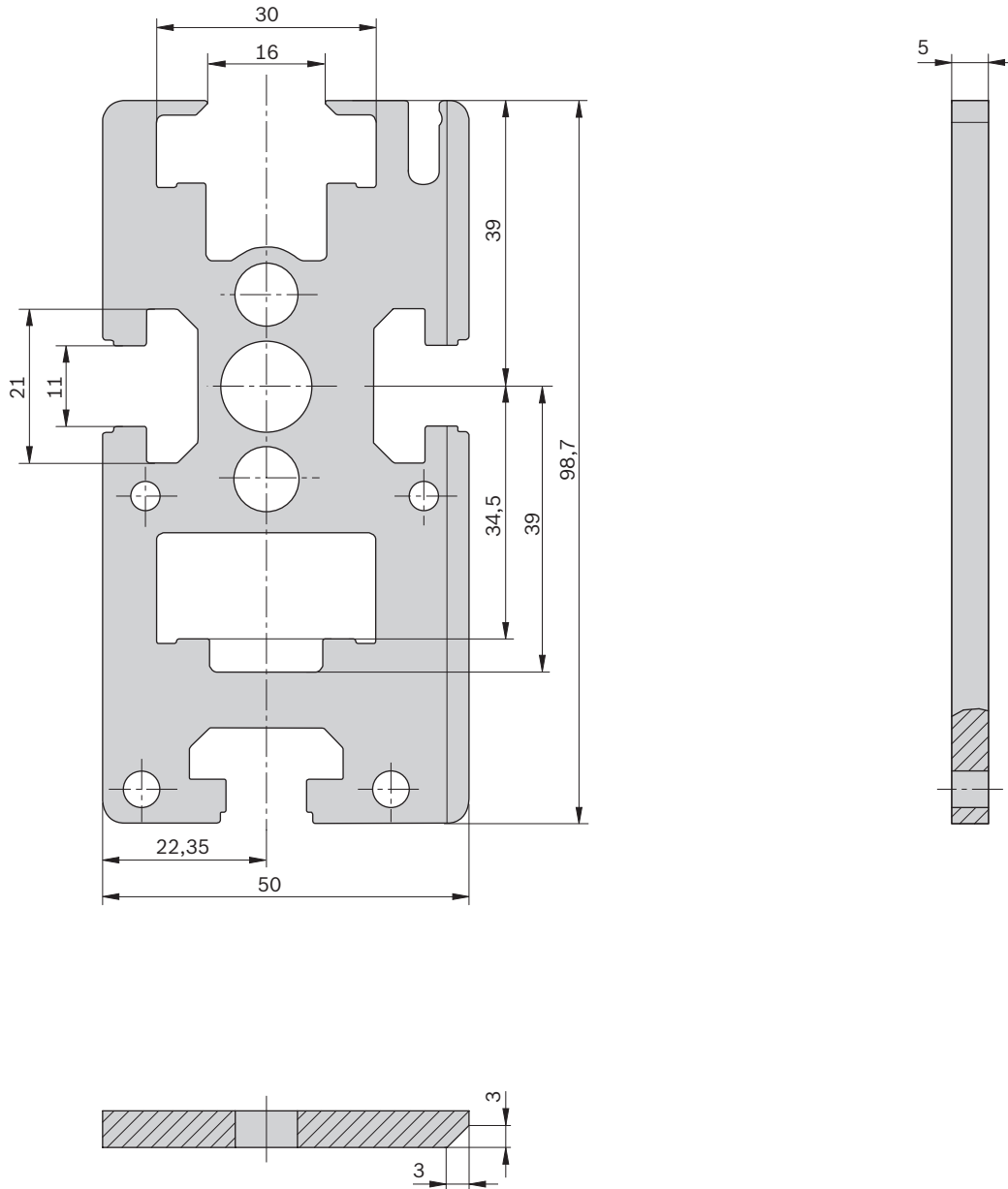
Ordering information

Product designation	Packaging unit	Material number
ST 2/R-H adapter plate kit	4	3842536800

Technical data

Material number	3842536800
Features	
ESD	Yes
Material specification	Steel; corrosion-resistant

Dimensions

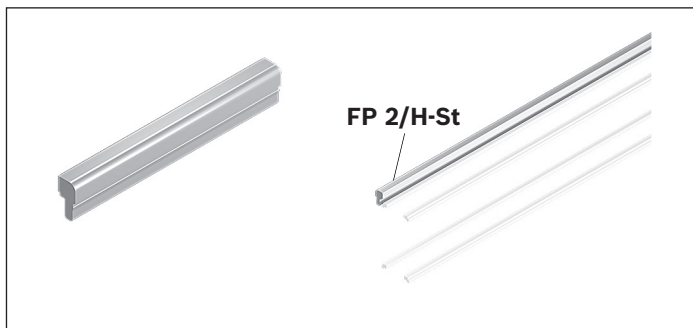


27634

FP 2/H-St guide profile



3



- ▶ For lateral guidance of the workpiece pallet
- ▶ For conveyor unit self-assembly
- ▶ For press-fitting onto SP 2/C-H or SP 2/R-H section profiles
- ▶ Robust version in corrosion-resistant steel

Accessories

Required accessories

- ▶ SP 2/C-H section profile, see p. 3-99, or SP 2/R-H, see p. 3-169

Delivery notes

Scope of delivery

- ▶ 24x rods (l = 3000 mm)

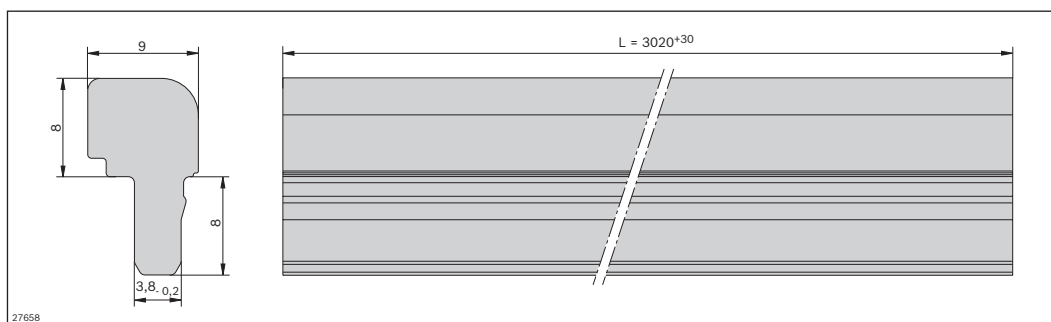
Ordering information

Product designation	l (mm)	Delivery unit	Material number
FP 2/H-St guide profile	3000	24	3842537890

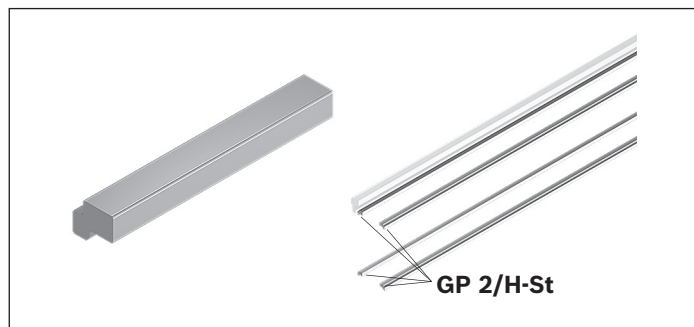
Technical data

Material number	3842537890		
Features			
ESD	Yes		
Material specification	Steel; corrosion-resistant		
Dimensions			
Length	l	mm	3000

Dimensions



GP 2/H-St glide profile



- ▶ For conveyor unit self-assembly
- ▶ For guiding the flat top chain or accumulation roller chain
- ▶ In especially sturdy design with corrosion-resistant steel for particularly heavy-duty sections
- ▶ For sliding onto SP 2/C-H or SP 2/R-H section profiles
- ▶ For use with all AS 2/R drive modules, UM 2/R return units and SP 2/R section profiles

Accessories

Required accessories

- ▶ SP 2/C-H section profile, see p. 3-99, or SP 2/R-H, see p. 3-169

Delivery notes

Scope of delivery

- ▶ 48x rods (l = 3000 mm)

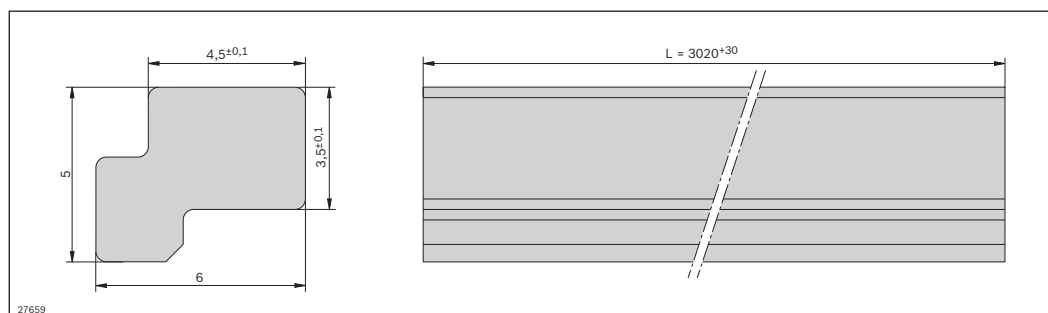
Ordering information

Product designation	l (mm)	Delivery unit	Material number
GP 2/H-St glide profile	3000	48	3842537888

Technical data

Material number	3842537888		
Features			
ESD	Yes		
Material specification	Steel; corrosion-resistant		
Dimensions			
Length	l	mm	3000

Dimensions

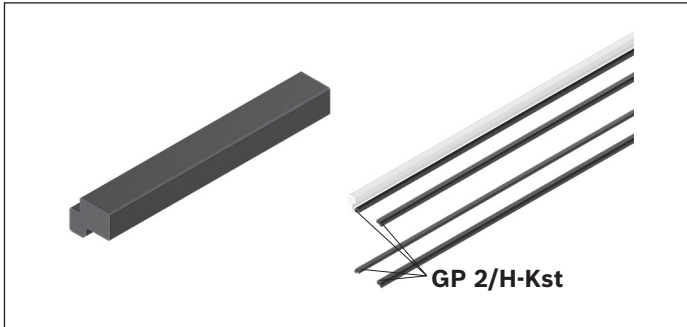


27659

GP 2/H-Kst glide profile



3



- ▶ For conveyor unit self-assembly
- ▶ For guiding the flat top chain or the accumulation roller chain
- ▶ For sliding onto SP 2/C-H or SP 2/R-H section profiles
- ▶ Used with all AS 2/R drive modules, UM 2/R return units and SP 2/R section profiles

Accessories

Required accessories

- ▶ SP 2/C-H section profile, see p. 3-99, or SP 2/R-H, see p. 3-169

Delivery notes

Scope of delivery

- ▶ 48x rods (l = 3000 mm)

Ordering information

Product designation	l (mm)	Delivery unit	Material number
GP 2/H-Kst glide profile	3000	48	3842537889

Technical data

Material number	3842537889
------------------------	-------------------

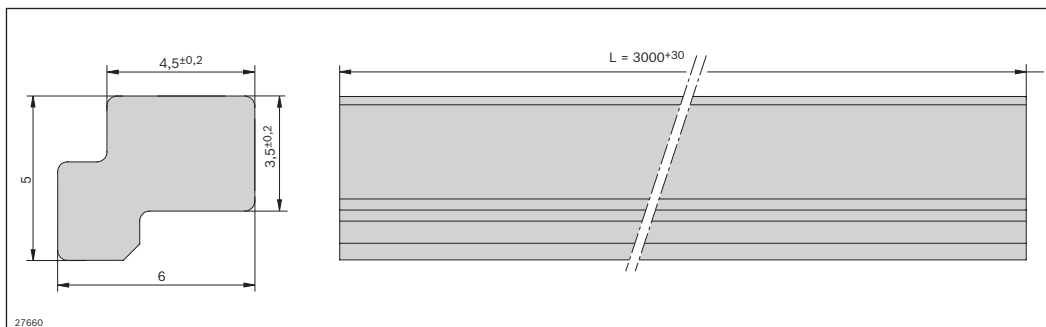
Features

ESD	Yes
Material specification	Plastic; PA (suitable for use in an EPA)

Dimensions

Length	l	mm	3000
--------	---	----	------

Dimensions



Profile connector



- ▶ For the end-to-end connecting of two profiles SP 2/...
Two profile connectors are recommended for each profile joint
- ▶ For conveyor unit self-assembly
- ▶ For use with all AS 2/R drive modules, UM 2/R return units and SP 2/R section profiles

Delivery notes

Scope of delivery

- ▶ Profile connector, screws

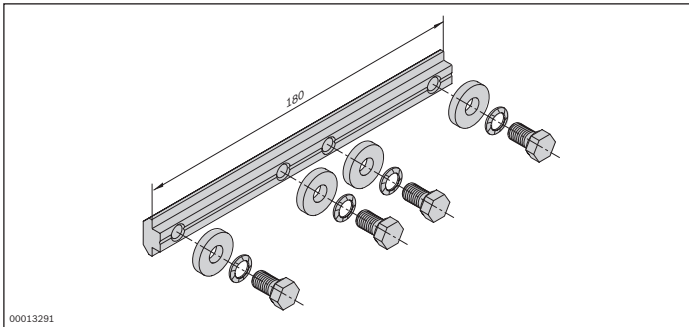
Ordering information

Product designation	Material number
Profile connector	3842528746

Technical data

Material number	3842528746
Features	
Material specification	Steel; galvanized

Dimensions



QV 2 cross connector



- ▶ For conveyor unit self-assembly
- ▶ For connecting section profiles and defining the track width
- ▶ Can be combined with all SP 2/... section profiles

3

The cross connectors serve to connect the conveyor section profiles.

Formula for calculating the number of cross connectors needed

$$A_{QV} = (l/2000 \text{ mm}) + 1$$

A_{QV} = number of cross connectors

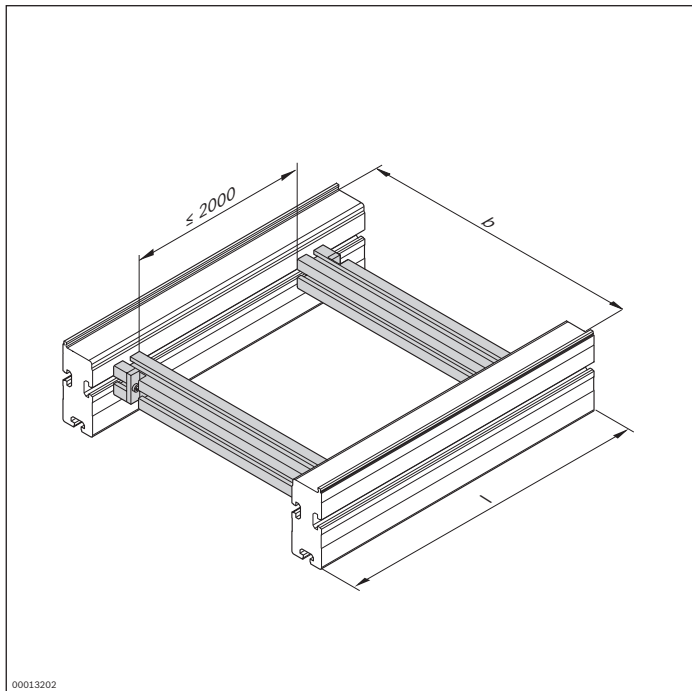
l = section length

Delivery notes

Scope of delivery

- ▶ 45x60 strut profile, finished
- ▶ 2x fastening material to mount on an ST 2 section

Ordering information



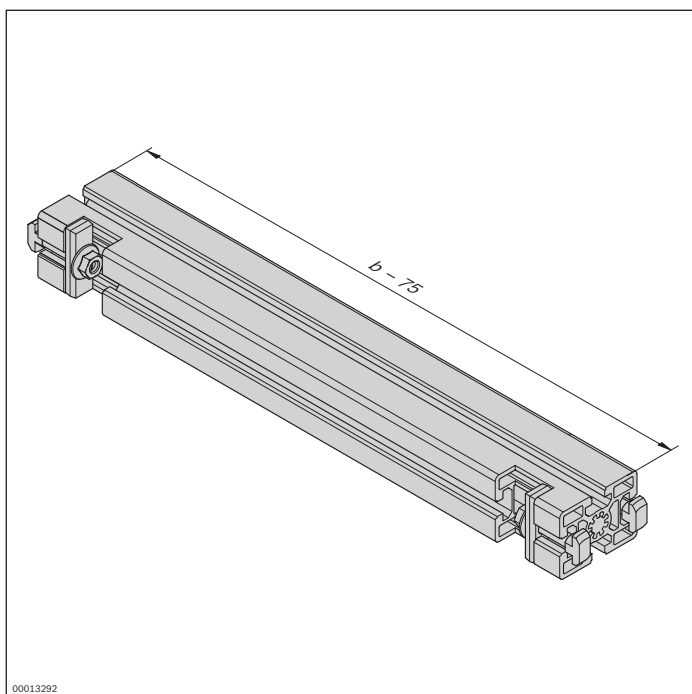
Material number	3842994635	
b (mm)	Track width in direction of transport	160; 240; 320; 400; 480; 640; 800; 1040; 1200
		160 ... 1200 ¹

¹ Individual width variants available

Technical data

Material number	3842994635
Features	
Material specification	Aluminum, natural; anodized

Dimensions



QV 2-H cross connector



- ▶ For heavy-duty conveyor unit self-assembly
- ▶ For connecting section profiles and defining the track width
- ▶ Can be combined with all SP 2 section profiles

3

QV 2-H cross connectors are particularly suitable for connections between section profiles in heavy-duty systems.

Formula for calculating the number of cross connectors needed

$$A_{QV} = (l/2000 \text{ mm}) + 1$$

A_{QV} = number of cross connectors

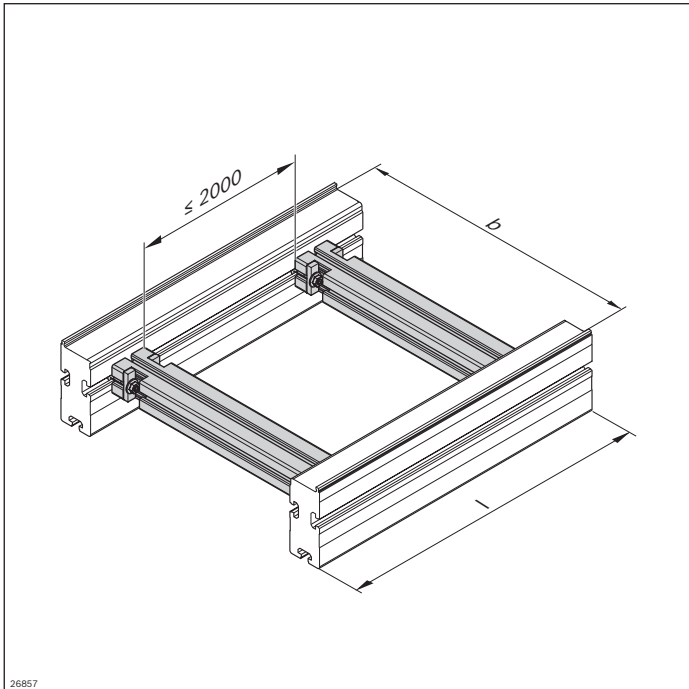
l = section length

Delivery notes

Scope of delivery

- ▶ 45x60 strut profile, finished
- ▶ 4x fastening material to mount on an ST 2 section

Ordering information



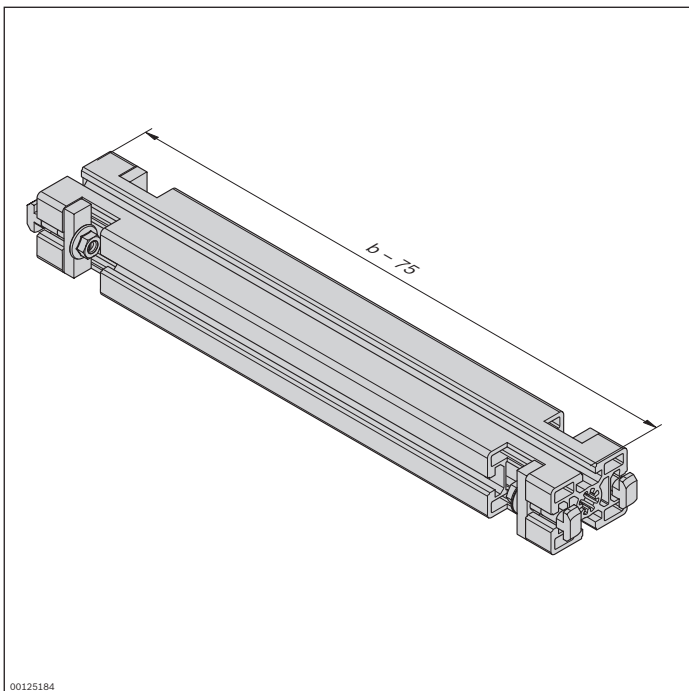
Material number		3842993052
b (mm)	Track width in direction of transport	160; 240; 320; 400; 480; 640; 800; 1040; 1200
		160 ... 1200 ¹

¹ Individual width variants available

Technical data

Material number	3842993052
Features	
Material specification	Aluminum, natural; anodized

Dimensions



ST 2/R-...-W maintenance section



3



- ▶ For maintenance use (assembly, disassembly or lubrication)
- ▶ Two removable side covers each
- ▶ Suitable for accumulation roller chains
- ▶ ST 2/R-W suitable for ST 2/R section profiles
- ▶ ST 2/R-H-W suitable for ST 2/R-H section profiles

The maintenance section is a section element with removable caps. It is used for maintenance (assembly,

disassembly, lubrication) of the accumulation roller chain conveyor medium.

Delivery notes

Scope of delivery

- ▶ 2x maintenance section elements consisting of ST 2/R-100 section profiles, FP 2/R guide profiles and GP 2/R glide profiles
- ▶ 4x side cover
- ▶ 8x profile connector
- ▶ Incl. fastening material

Ordering information

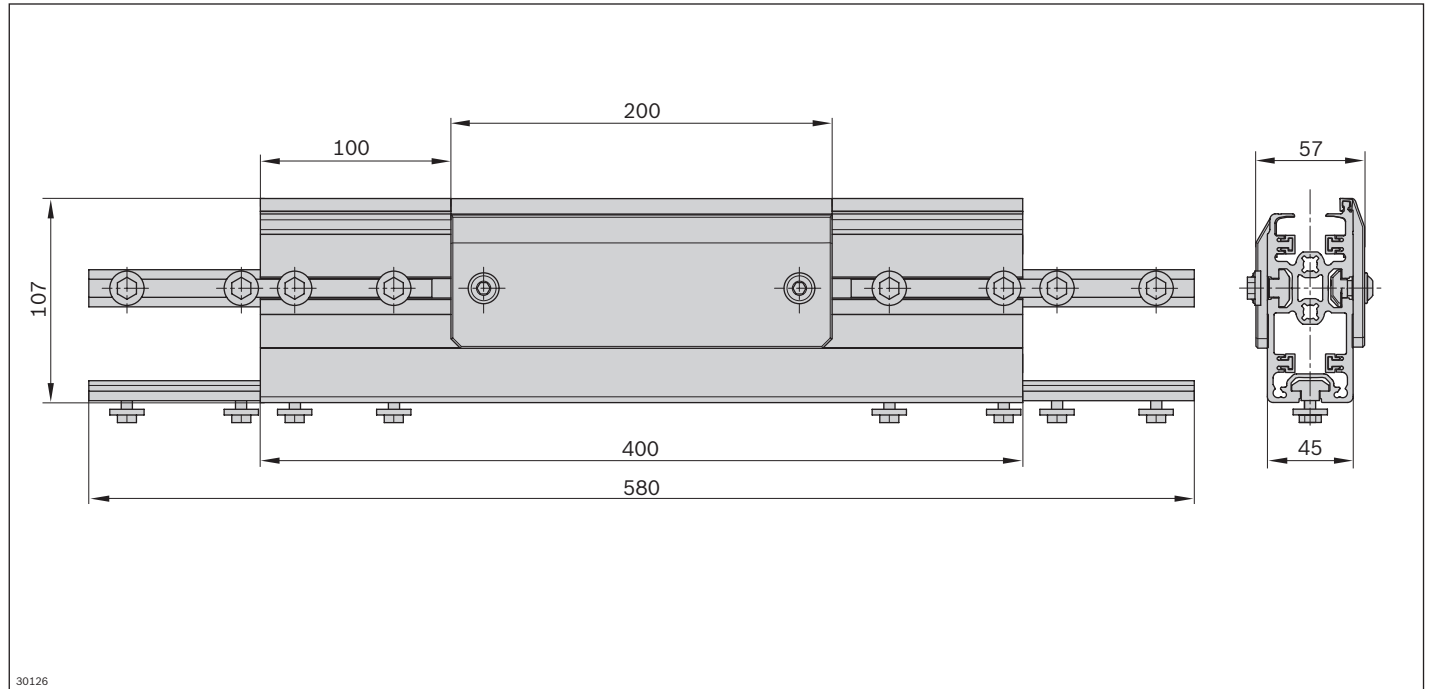
Product designation	Delivery unit	Material number
ST 2/R-W maintenance section	2	3842532778
ST 2/R-H-W maintenance section	2	3842537319

Technical data

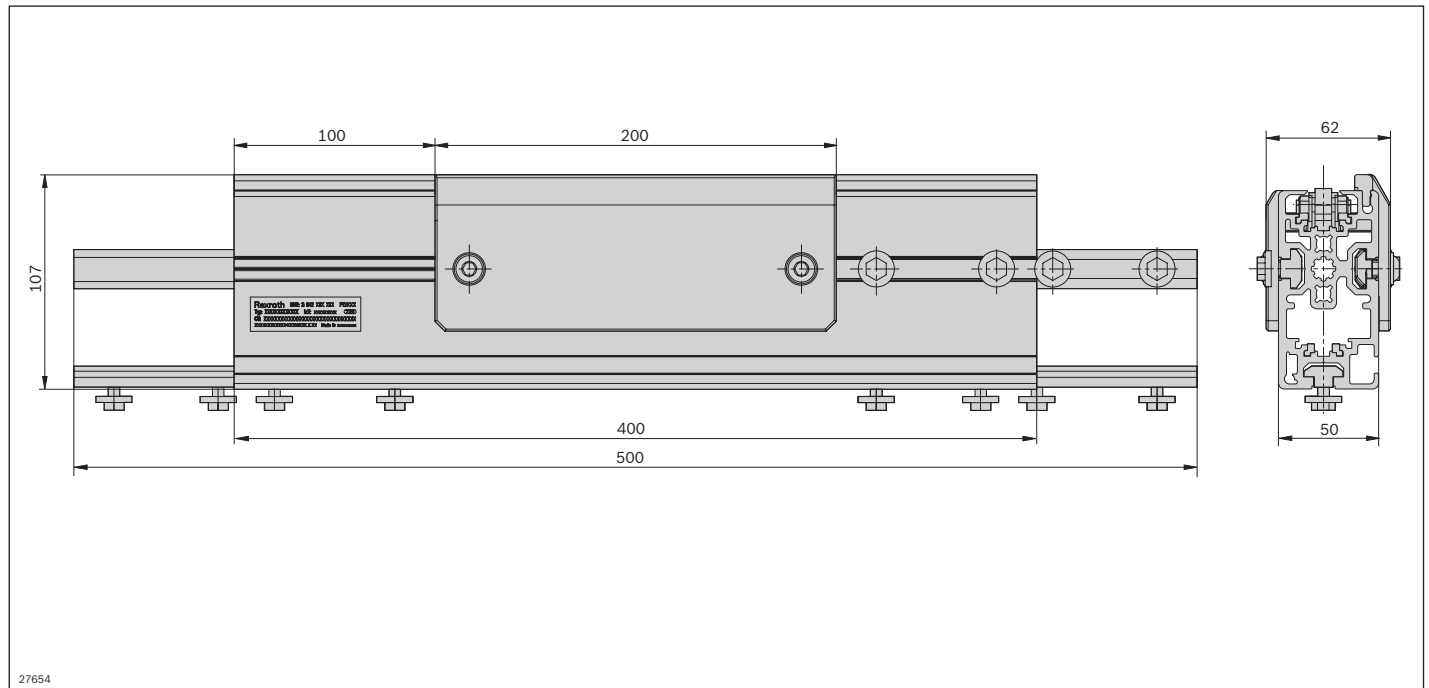
Material number	3842532778	3842537319
Features		
ESD	Yes	Yes
Material specification	Section profile: Aluminum, natural; anodized Side cover: Polyethylene	Section profile: Aluminum, natural; anodized Side cover: Polyethylene
Dimensions		
Length	l	mm
	400	400

Dimensions

ST 2/R-W maintenance section



ST 2/R-H-W maintenance section



Accumulation roller chain with PA accumulation rollers



3



- ▶ Conveyor medium for the workpiece pallets
- ▶ For conveyor unit self-assembly
- ▶ For use in conjunction with ST 2/R and ST 2/R-H conveyor units
- ▶ Delivered in units of 12000 mm. Lengths of $l > 12000$ mm can be produced by connecting several accumulation roller chains using master links.
- ▶ Chains are available with small parts protection (= filler pieces in the accumulation roller chain prevent small parts from pinching)

Note: Reversible operation is not possible in conjunction with small parts protection.

- 1 Accumulation roller chain with PA accumulation rollers
- 2 Accumulation roller chain with PA accumulation rollers and small parts protection

Delivery notes

Scope of delivery

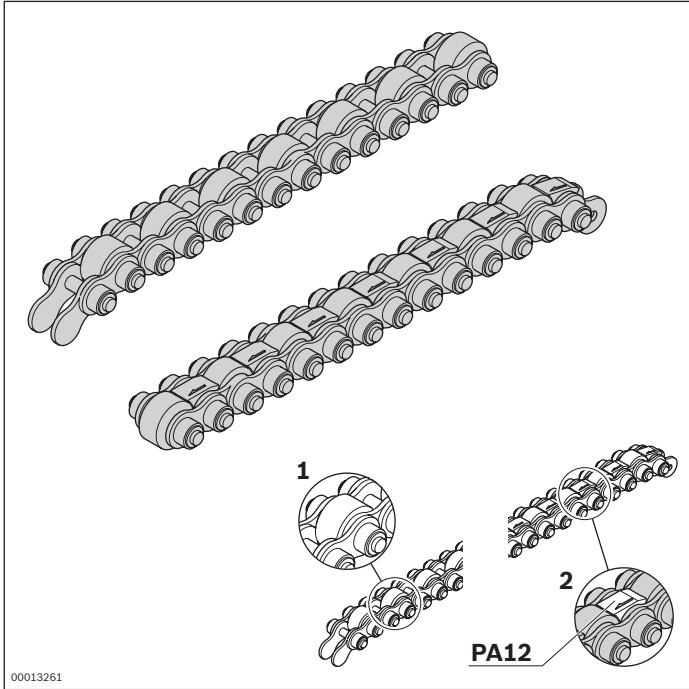
- ▶ Units up to 12000 mm, incl. 1x master link

Ordering information

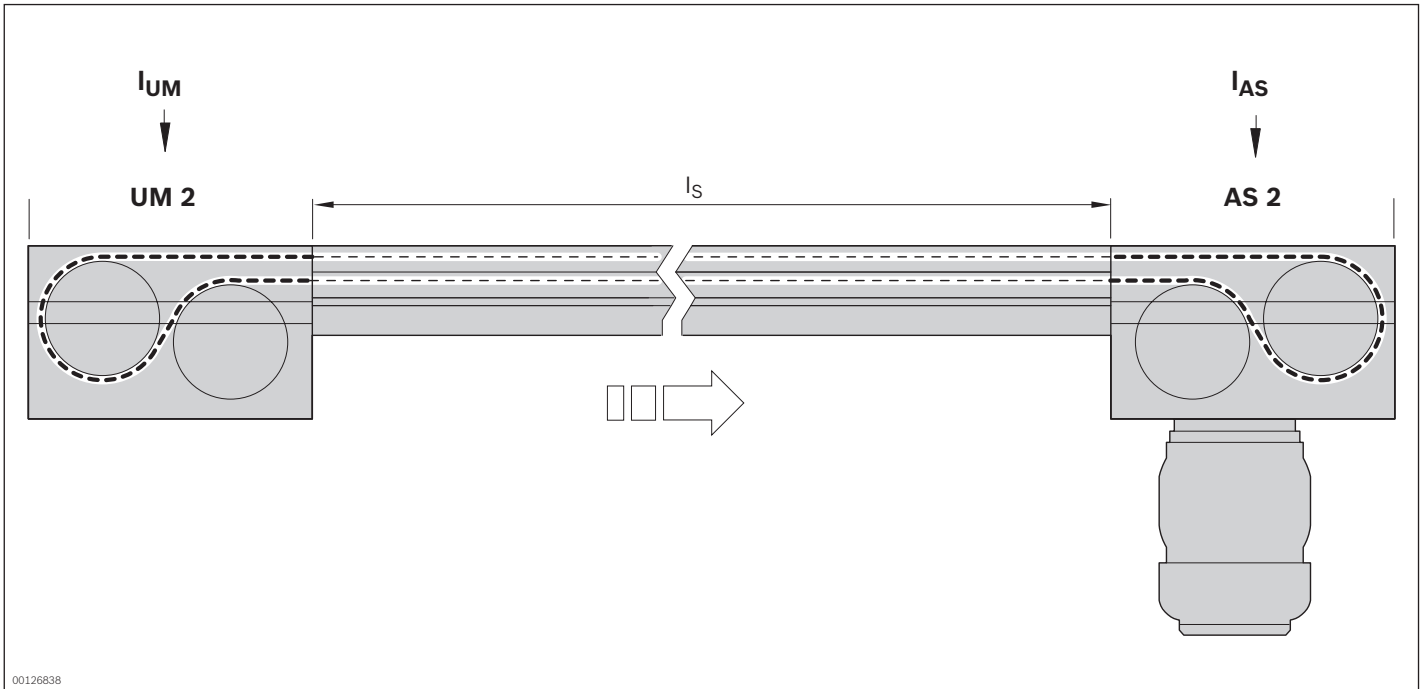
Product designation	Material number
Accumulation roller chain with PA accumulation rollers	3842523918
Accumulation roller chain with PA accumulation rollers and small parts protection	3842536268

Technical data

Material number	3842523918	3842536268
Features		
ESD	Yes	Yes
Material specification	Accumulation roller chains: PA 12	Accumulation roller chains: PA 12 Small parts protection: PA 12
Dimensions		
Length	l	mm
	12000	12000



Dimensions



The required chain length is determined using the following formula.

$$l_R = 2 \times l_s + l_{AS} + l_{UM}$$

- l_R = length of accumulation roller chain
- l_s = length of the section profile
- l_{AS} = length of the conveyor medium in the drive module
- l_{UM} = length of the conveyor medium at the return unit

Length of the conveyor medium for accumulation roller chain

- $l_{UM\ 2/C-170} = 310\text{ mm}$
- $l_{UM\ 2/C-60} = 150\text{ mm}$
- $l_{AS} = 625\text{ mm}$

Accumulation roller chain with steel accumulation rollers



3



- ▶ Conveyor medium for the workpiece pallets
- ▶ For conveyor unit self-assembly
- ▶ For use in conjunction with ST 2/R and ST 2/R-H conveyor units
- ▶ Delivered in units of 12000 mm. Lengths of $l > 12,000$ mm can be produced by connecting several accumulation roller chains using master links.
- ▶ Chains are available with small parts protection (= filler pieces in the accumulation roller chain prevent small parts from pinching)

Note: Reversible operation is not possible in conjunction with small parts protection.

- 1 Accumulation roller chain with steel accumulation rollers
- 2 Accumulation roller chain with steel accumulation rollers and small parts protection

Delivery notes

Scope of delivery

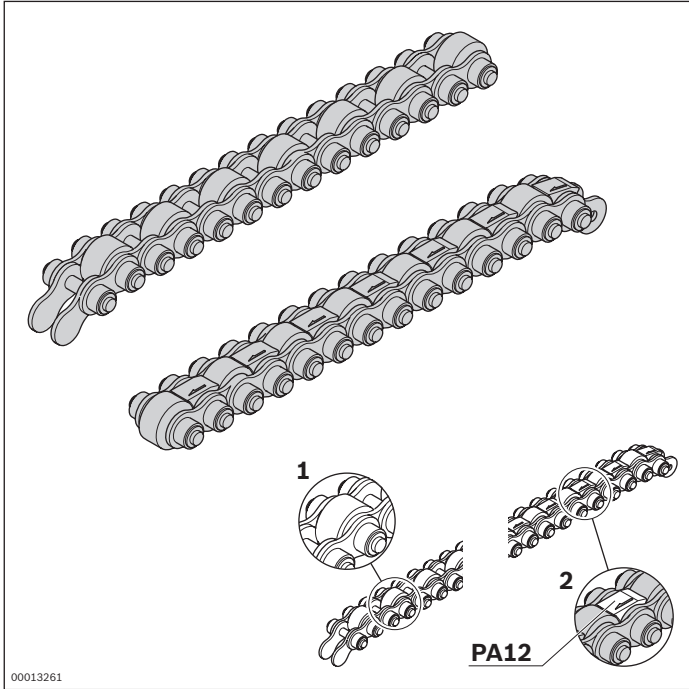
- ▶ Units up to 12000 mm, incl. 1x master link

Ordering information

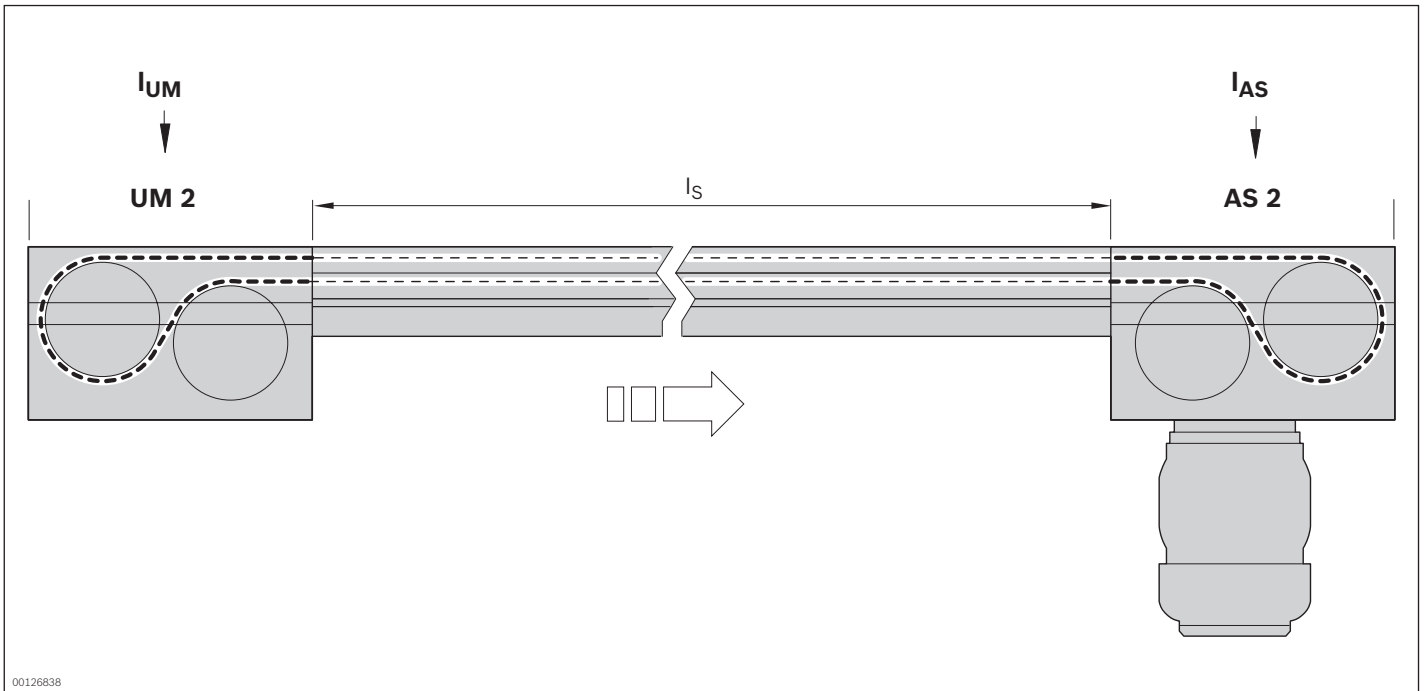
Product designation	Material number
Accumulation roller chain with steel accumulation rollers	3842530864
Accumulation roller chain with steel accumulation rollers and small parts protection	3842536270

Technical data

Material number	3842530864	3842536270
Features		
ESD	Yes	Yes
Material specification	Accumulation roller chains: Steel	Accumulation roller chains: Steel Small parts protection: PA 12 (suitable for use in an EPA)
Dimensions		
Length	l	mm
	12000	12000



Dimensions



The required chain length is determined using the following formula.

$$l_R = 2 \times l_s + l_{AS} + l_{UM}$$

- l_R = length of accumulation roller chain
- l_s = length of the section profile
- l_{AS} = length of the conveyor medium in the drive module
- l_{UM} = length of the conveyor medium at the return unit

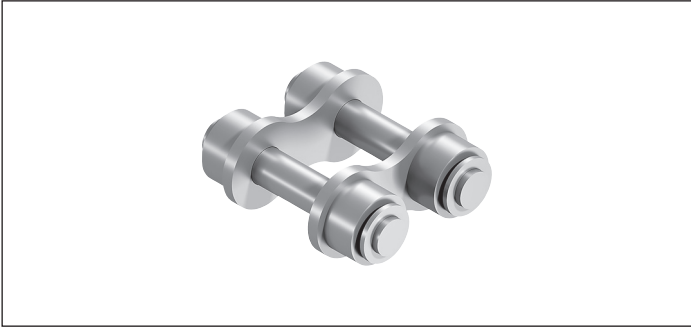
Length of the conveyor medium for accumulation roller chain

- $l_{UM\ 2/C-170} = 310\text{ mm}$
- $l_{UM\ 2/C-60} = 150\text{ mm}$
- $l_{AS} = 625\text{ mm}$

Master link for accumulation roller chain



3



- ▶ For locking the accumulation roller chain after insertion in conveyor section element
- ▶ Suitable for all accumulation roller chains except the *Vplus* accumulation roller chain

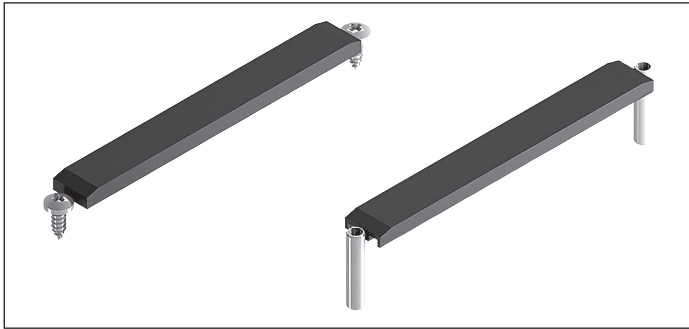
Ordering information

Product designation	Material number
Master link for accumulation roller chain	3842530417

Technical data

Material number	3842530417
Features	
ESD	Yes
Material specification	Accumulation roller chains: Steel Small parts protection: PA 12 (suitable for use in an EPA)

Acceleration element



The support wheels of the chain elements are lifted and roll frictionally engaged between the acceleration element and

- ▶ For accelerated transport of a workpiece pallet to a stop gate
- ▶ The acceleration element is used in conjunction with the accumulation roller chain conveyor medium with steel rollers.
- ▶ Accumulation operation not permitted
- ▶ Installation in sections after the stop gate
- ▶ Suitable for retrofitting

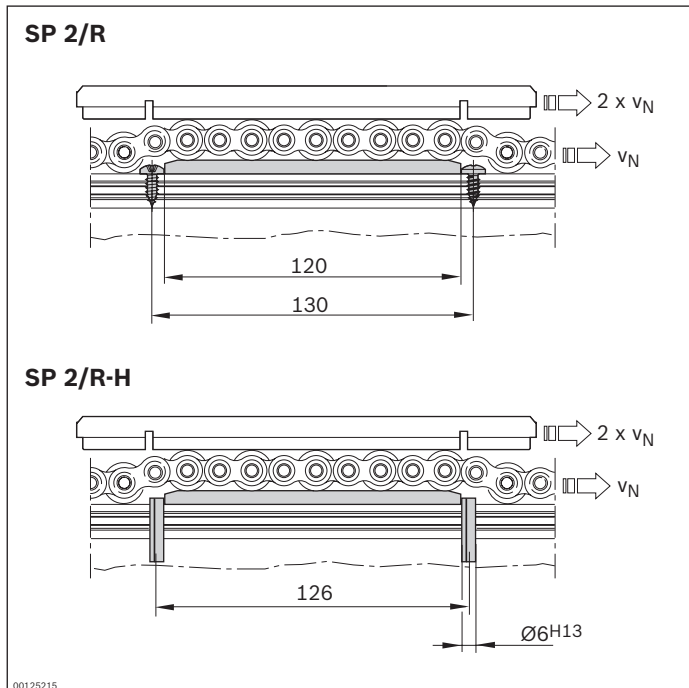
the workpiece pallet with a peripheral speed of $v_U = 2 \times v_N$. This may be limited in oily environments.

Delivery notes

Condition on delivery

- ▶ Not assembled

Ordering information



Product designation	Packaging unit	Material number
SP 2/R acceleration element	2	3842536382

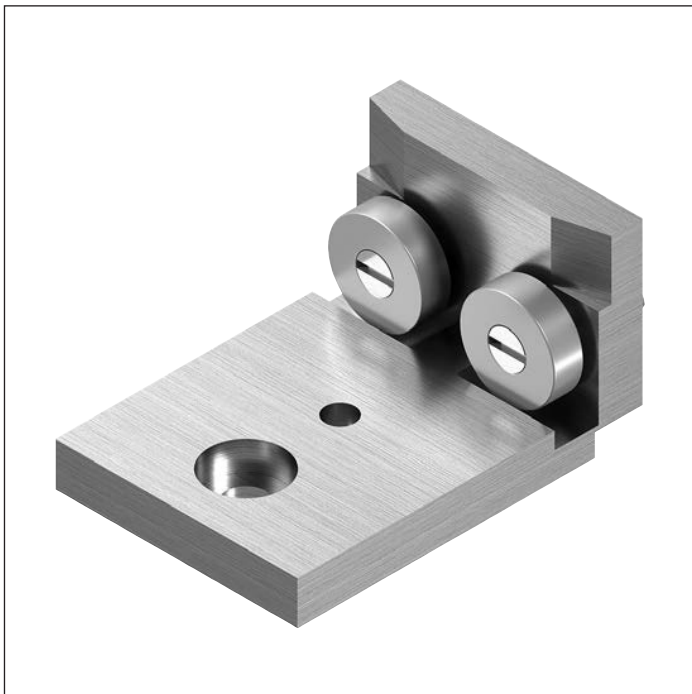
Product designation	Packaging unit	Material number
SP 2/R-H acceleration element	2	3842537615 ¹

¹ Use with WT 2/F on request

Technical data

Material number	3842536382	3842537615
Features		
ESD	Yes	Yes
Material specification	PE; abrasion-resistant	PE; abrasion-resistant

RB 2/UM roller track set



- ▶ Mounted roller section for mounting on AS 2/B or UM 2/B for transverse conveying
- ▶ Additional workpiece pallet support on the front transition from AS 2/B to UM 2/B or from AS 2/B or UM 2/B to a lift transverse unit
- ▶ One set is required for each AS 2/B or UM 2/B
- ▶ Required for workpiece pallet lengths of 160 mm; recommended for longer lengths
- ▶ Without drive
- ▶ Reversible operation possible
- ▶ Can be combined with WT 2/E, WT 2, WT 2/F

Delivery notes

Scope of delivery

- ▶ Set (containing 2x roller track, 2x guide profile, 2x fastening kit)

Condition on delivery

- ▶ Fully assembled

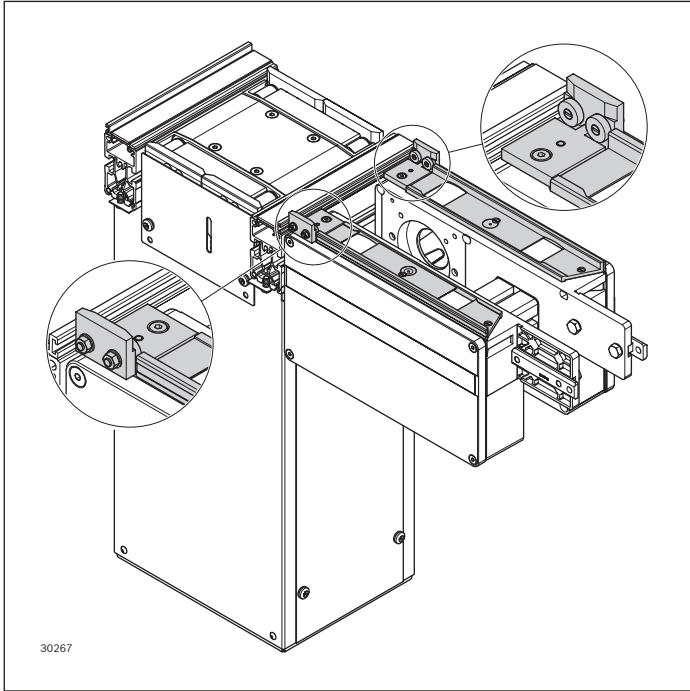
Ordering information

Product designation	Packaging unit	Material number
RB 2/UM 2 roller track set	Set	3842558657

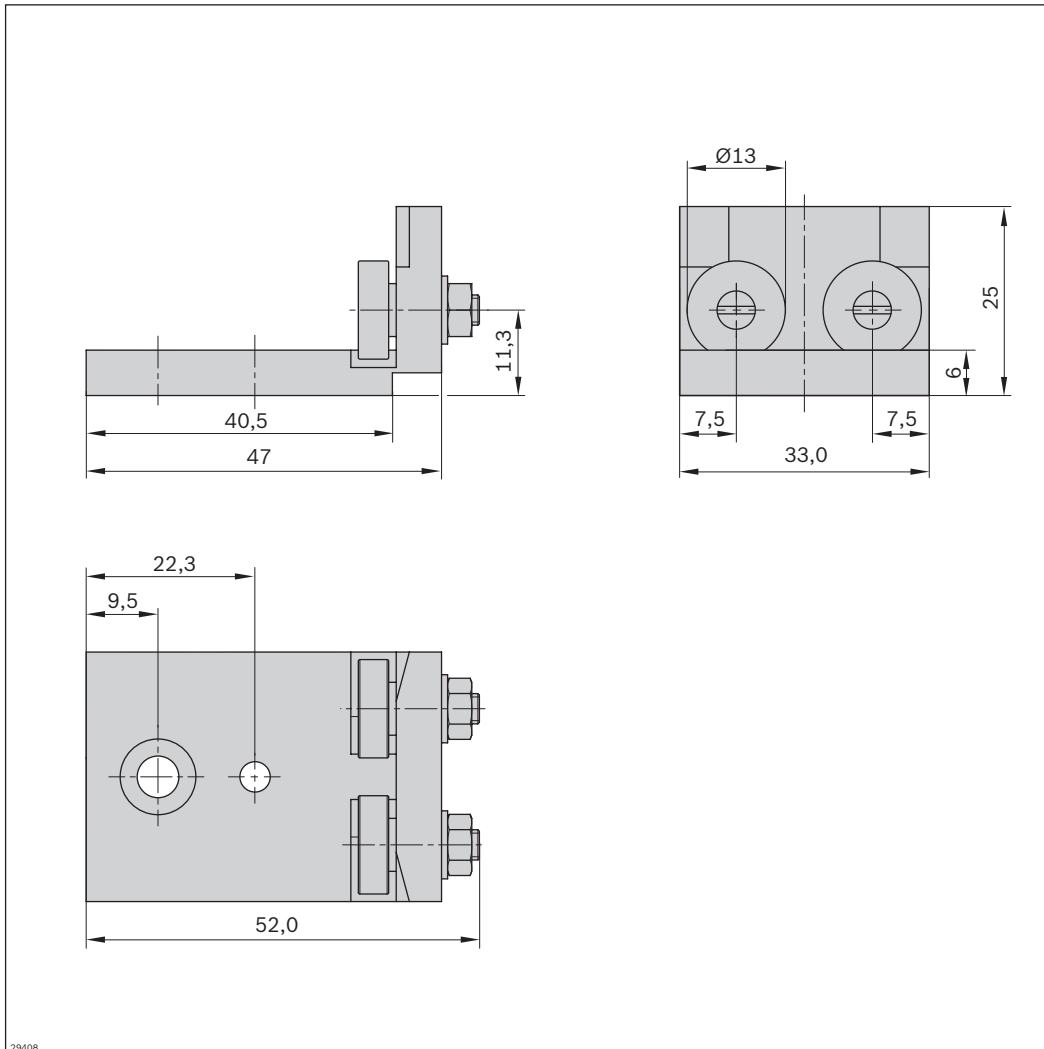
Technical data

Material number	3842558657
Features	
Material specification	Track: Aluminum Rollers: Steel

3-190 **TS 2plus 7.0** | Longitudinal conveyor
RB 2/UM roller track set



Dimensions

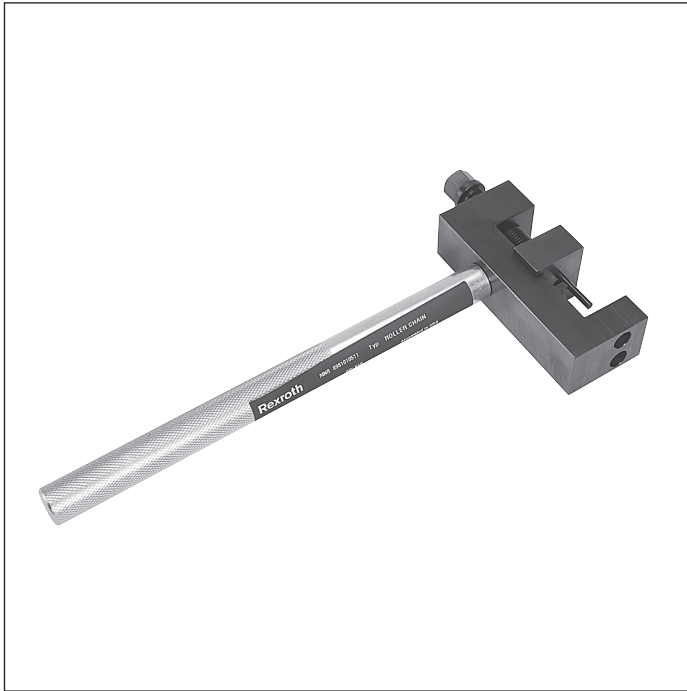


29408

Chain breaker for accumulation roller chain



3



- ▶ Makes it easier to open and disassemble the accumulation roller chain
- ▶ Turning the thread pin pushes out a chain bolt and the chain can be removed

The thread pin has a hexagonal fixture acting as a lever arm for a size 13 hexagonal wrench. Grooves are provided for

the exact positioning of the chain links.

Delivery notes

Condition on delivery

- ▶ Fully assembled

Ordering information

Product designation	Material number
Chain breaker for accumulation roller chain	8981010511

Technical data

Material number	8981010511
Features	
Material specification	Steel; hardened