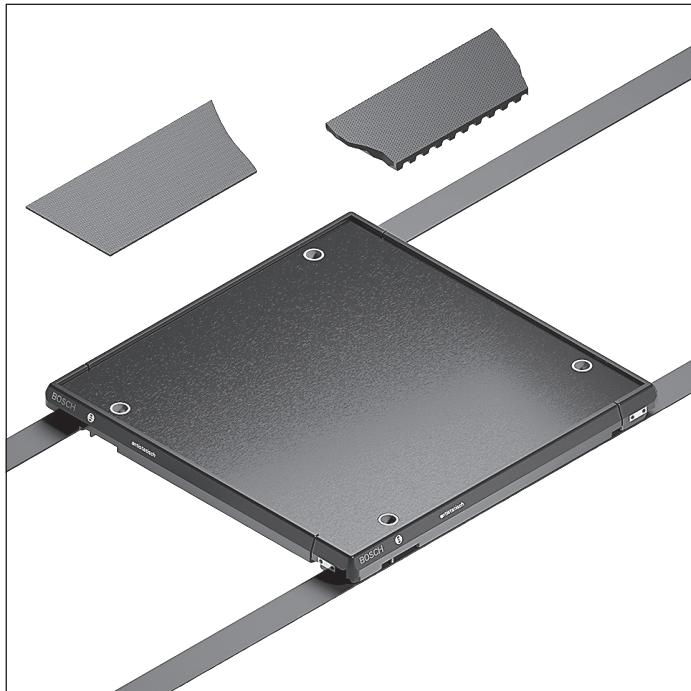


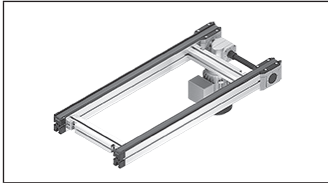
Belt and toothed belt conveyor medium



The belt and toothed belt conveyor media are suitable for conveying small and medium-sized workpiece pallets in clean, dry environments. The high flexibility and flat design of the conveyor media allow for narrow conveyor trenches between section profiles.

Whereas the belt is an especially economical conveyor medium, primarily utilized on longer section segments, the toothed belt is suitable for shorter section segments and/or driving neighboring modules without their own drives.

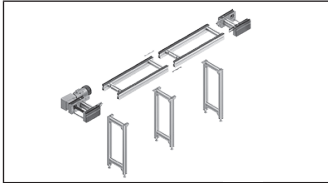
The conveyor media, or the modules equipped with these media, are used for assembly of lightweight products, e.g., electrical household appliances. Features such as a low risk of drawing-in and low profile construction height, as well as quiet operation, facilitate use at manual assembly stations. A surface load of up to 1 kg/cm is permissible on workpiece pallets with PA wear pads.



BS 2 belt sections



3-6



Parts for AS 2, UM 2, ST 2 conveyor units



3-16



Connection kits

3-236

BS 2 belt section



- ▶ Ready for operation conveyor section with own drive
- ▶ Accumulation operation possible
- ▶ Conveyor medium: Toothed belt (suitable for use in an EPA)
- ▶ Reversible operation possible
- ▶ Right, left or central motor mounting (central from track width of 240 mm)
- ▶ Motor connection: optionally with cable/plug or terminal box
- ▶ Special models on request

The belt section is a ready for operation conveyor section with own drive for the transportation of workpiece pallets in the longitudinal direction or for the transverse conveying

of the workpiece pallet between parallel conveyor sections in connection with two HQ 2 lift transverse units.

Accessories

Recommended accessories

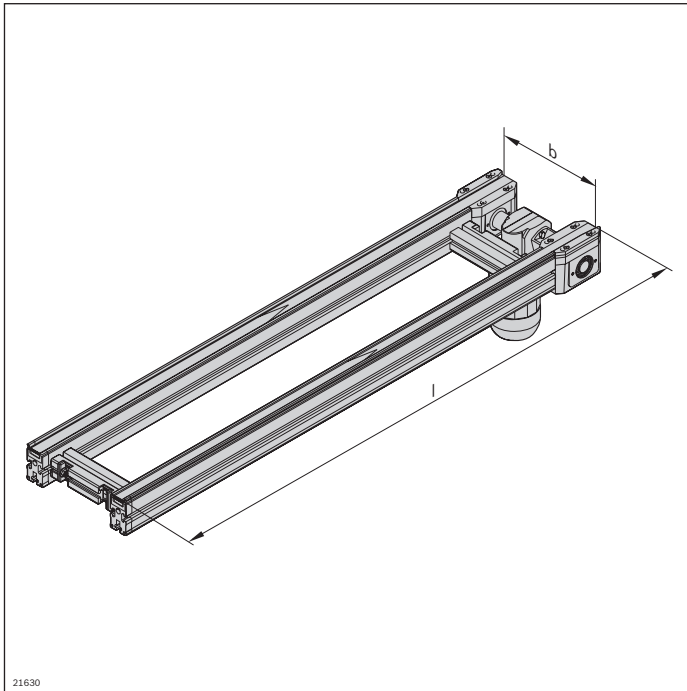
- ▶ Connection kit, see page 3-236
- ▶ SZ 2 leg sets, see page 6-2

Delivery notes

Condition on delivery

- ▶ Fully assembled

Ordering information



Material number		3842999716
b (mm)	Track width in direction of transport	160; 240; 320; 400; 480; 640; 800; 1040; 1200 160 ... 1200 ¹⁾
l (mm)	Length	240 ... 6000 ²⁾
v _N (m/min)	Nominal speed	0 ³⁾ ; 6; 9; 12; 15; 18
U (V)	Voltage	See motor data, p. 11-24ff
f (Hz)	Frequency	See motor data, p. 11-24ff
AT	Motor connection S = cable/plug K = terminal box	S; K
MA	Motor mounting R = right L = left M = center	R; L; M ⁴⁾

¹⁾ Individual width variants available
²⁾ l is rounded in accordance with the toothed belt pitch
³⁾ v_N = 0: without motor or gear
⁴⁾ When MA = M and b = 160 mm, the max. section load is only 30 kg

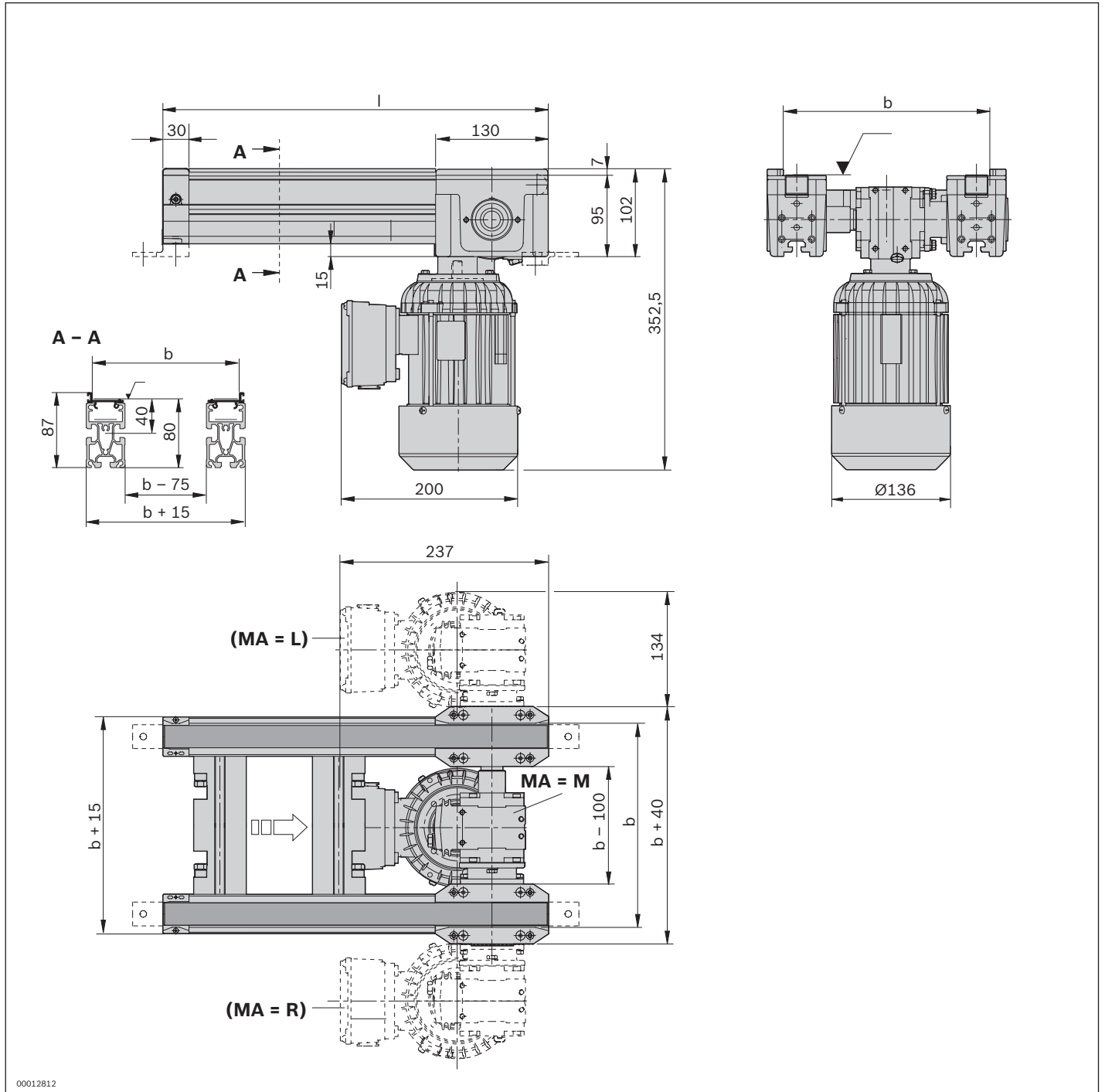
Technical data

Material number		3842999716
Load		
Max. section load in accumulation operation	kg	60 ⁵⁾
Features		
ESD		Yes
Material specification		Section profile: Aluminum, natural; anodized Guide profile: polyamide Glide profile: polyamide
Dimensions		
Length	l	mm 240 ... 6000

⁵⁾ When MA = M and b = 160 mm, the max. section load is only 30 kg

3

Dimensions



00012812

BS 2/M belt section



- ▶ Functional operation conveyor complete with drive
- ▶ Accumulation operation possible
- ▶ Conveyor medium: Toothed belt (suitable for use in an EPA)
- ▶ Reversible operation possible
- ▶ Right, left or central motor mounting (central from track width of 240 mm)
- ▶ Motor connection: optionally with cable/plug or terminal box
- ▶ Special models on request

The belt section is a conveyor section that is ready for operation with own drive for the transportation of workpiece pallets. It is suitable for all installation situations

in which the motor cannot be fitted to the end of the belt section.

Accessories

Recommended accessories

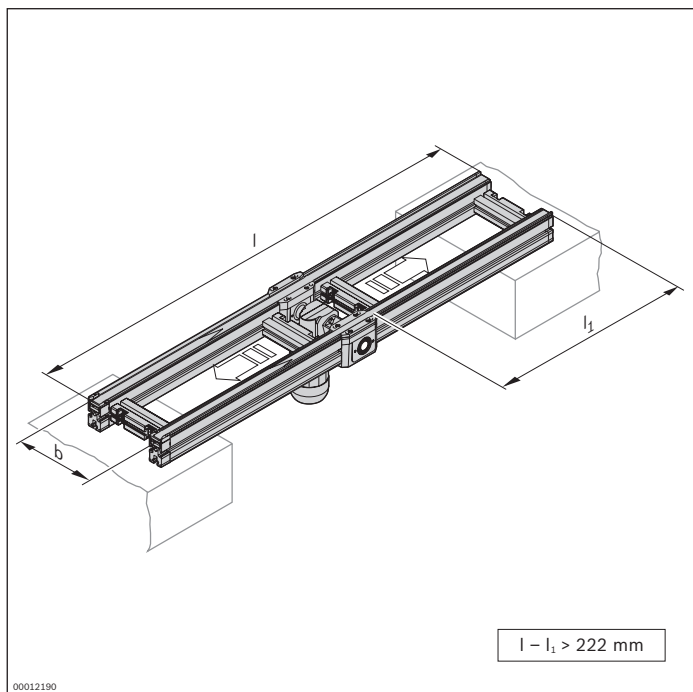
- ▶ Connection kit, see page 3-236
- ▶ SZ 2/... leg sets, see page 6-2

Delivery notes

Condition on delivery

- ▶ Fully assembled

Ordering information



Material number		3842999717
b (mm)	Track width in direction of transport	160; 240; 320; 400; 480; 640; 800; 1040; 1200 160 ... 1200 ¹
l (mm)	Length	310 ... 6000 ²
l ₁ (mm)	Length	90 ... 5770
v _N (m/min)	Nominal speed	0 ³ ; 6; 9; 12; 15; 18
U (V)	Voltage	See motor data, p. 11-24ff
f (Hz)	Frequency	See motor data, p. 11-24ff
AT	Motor connection S = cable/plug K = terminal box	S; K
MA	Motor mounting R = right L = left M = center	R; L; M ⁴

¹) Individual width variants available

²) l is rounded in accordance with the toothed belt pitch
l - l₁ > 222 mm

³) v_N = 0: without motor or gear

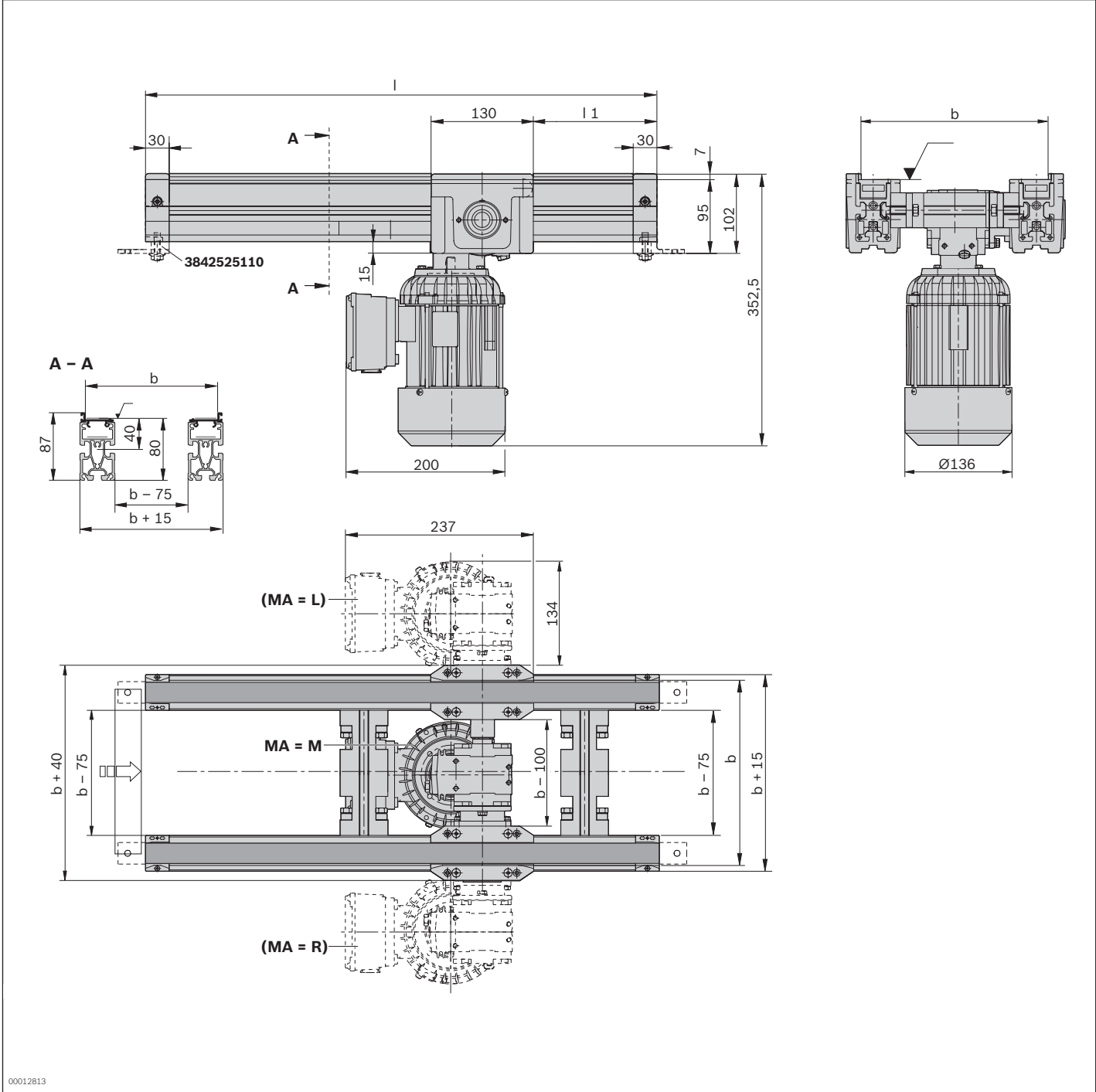
⁴) When MA = M and b = 160 mm, the max. section load is only 30 kg

Technical data

Material number		3842999717
Load		
Max. section load in accumulation operation	kg	60 ⁵
Features		
ESD		Yes
Material specification		Section profile: Aluminum, natural; anodized Guide profile: Polyamide Glide profile: Polyamide
Dimensions		
Length	l	mm
		310 ... 6000

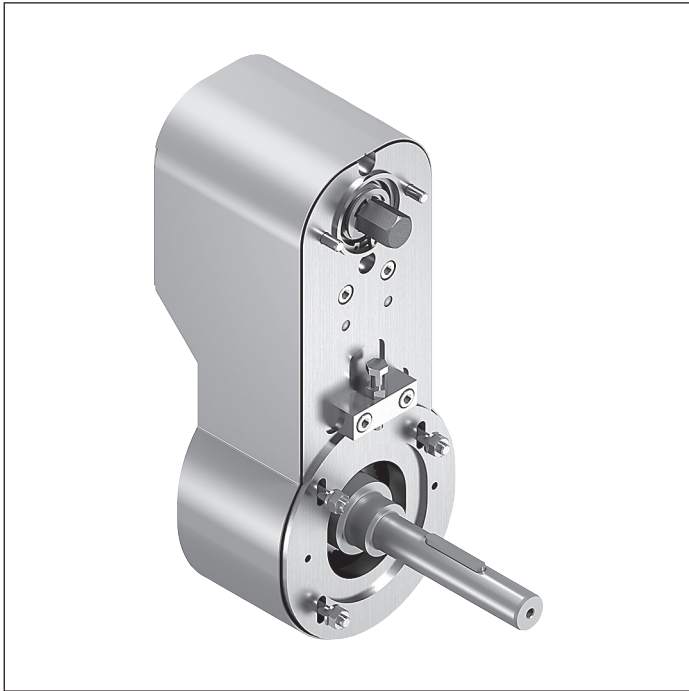
⁵ When MA = M and b = 160 mm, the max. section load is only 30 kg

Dimensions



00012813

Transmission drive



- ▶ Timing belt side drive for gear motors that must be constructed set lower so that they can be driven over
- ▶ Suitable for flange mounted gears, flange diameter 120 mm (B5 version with worm gear) and hollow shaft, diameter 20 mm
- ▶ Designed for Spiroplan SEW, WAF20, WAF30 or WAF37 right-angle gear motors and SAF37 worm gear motors
- ▶ Reversible operation possible
- ▶ Suitable for mounting to BS 2 and BS 2/M belt sections
- ▶ Maximum transferable torque (on the gear output):
 $m_{\max} = 12 \text{ Nm}$
- ▶ Only suspended mounting of the gear motor is permitted

For mounting larger third-party motors for the transmission of higher drive torques (maximum section loads of the belt section must not be exceeded).

Accessories

Required accessories

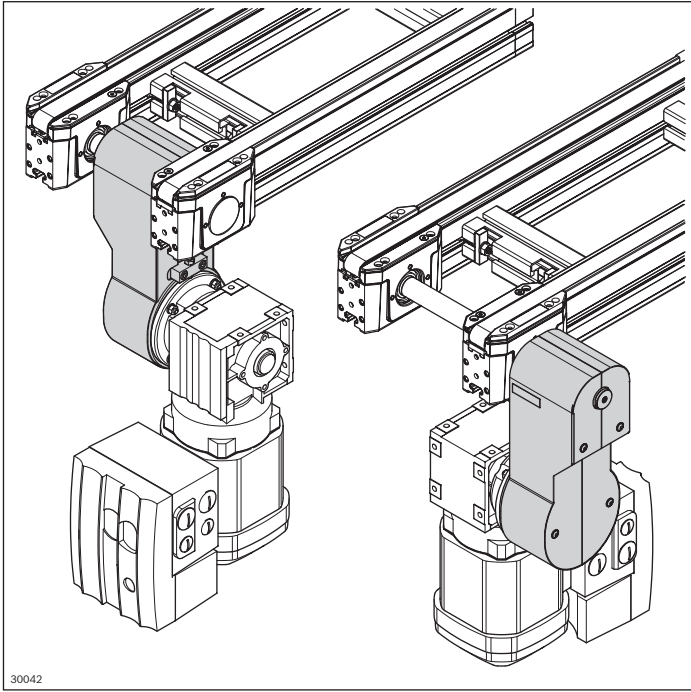
- ▶ BS 2 (see p. 3-6) or BS 2/M (see p. 3-9) belt section
- ▶ Gear motor
- ▶ Torque support (to be supplied by the operator)

Delivery notes

Condition on delivery

- ▶ Unassembled in parts
- ▶ Bearing already press-fitted
- ▶ Including adapter set and additional hexagonal shaft

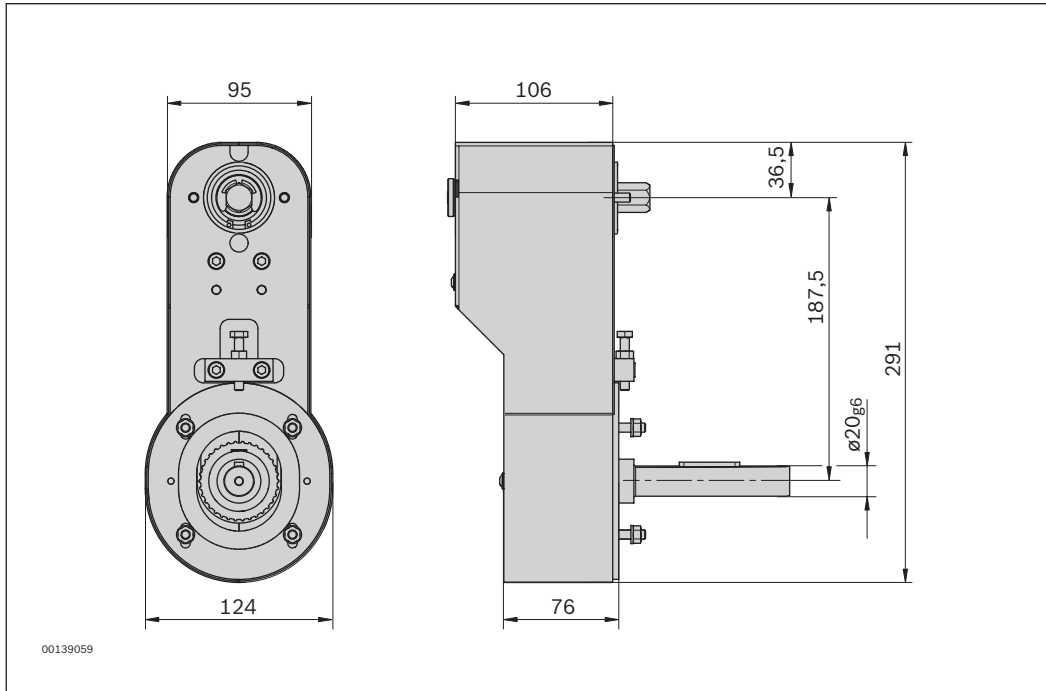
Ordering information



30042

Product designation		Material number
Transmission drive		3842542550
Technical data		Material number
Material number		3842542550
Load		
Maximum transferable torque	Nm	12
Features		
ESD		Yes

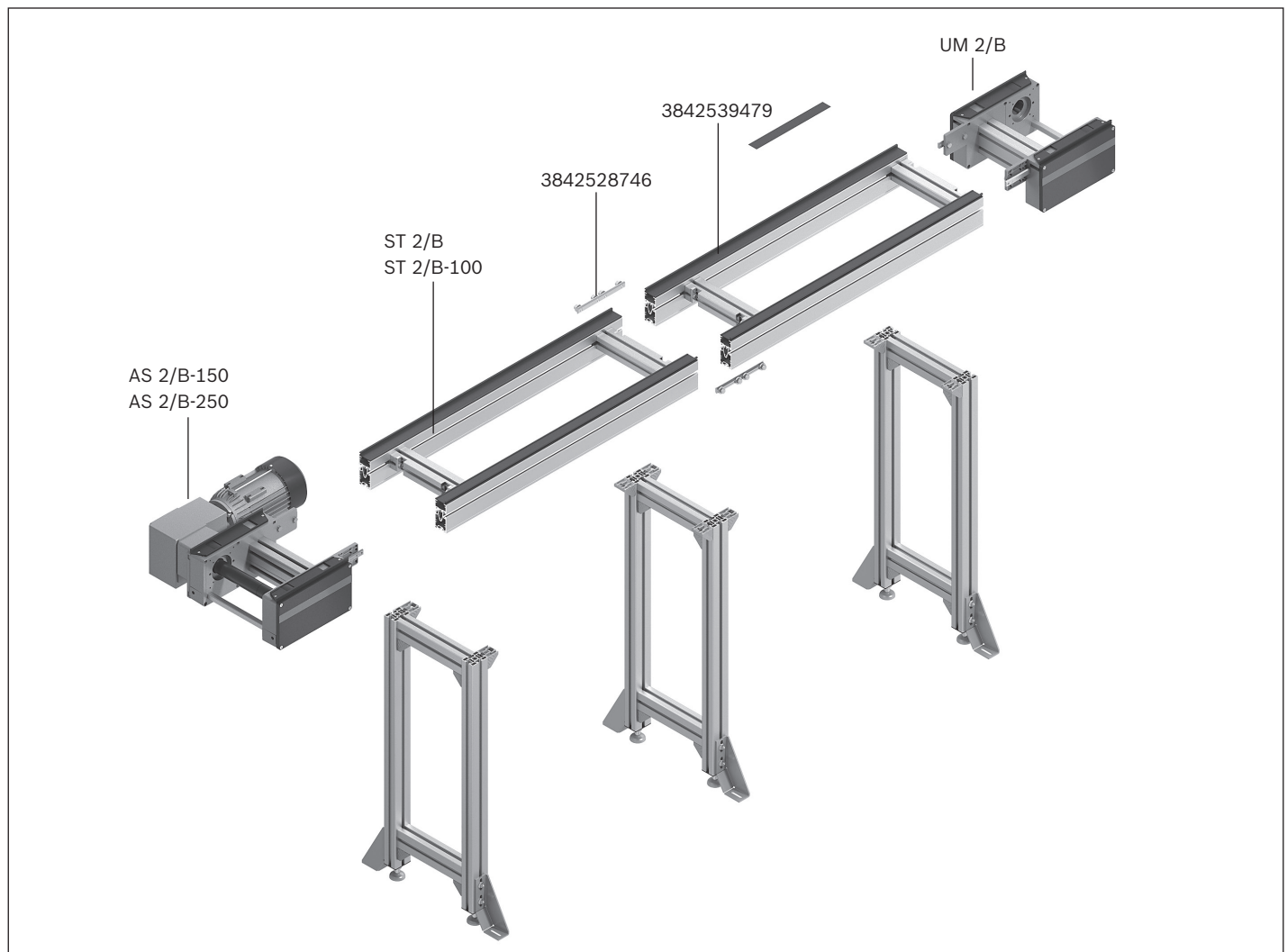
Dimensions





Conveyor units

Parts for belt conveyor medium

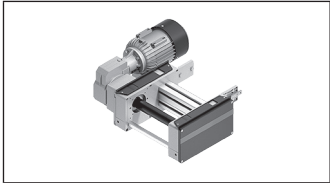


A conveyor unit is a complete unit used for linear conveying of workpiece pallets. It consists of:

- ▶ AS 2/B-... drive module, see p. 3-18
- ▶ UM 2/B return unit, see p. 3-24
- ▶ ST 2/... section, see p. 3-28
- ▶ SZ 2/... leg sets, see page 6-2

The UM 2/B and AS 2/B may be set up right next to each other, which allows for conveyor unit combinations.

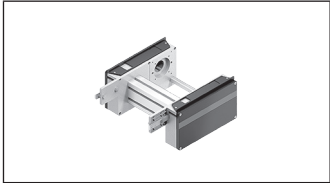
The drive module is designed for section loads up to $m_G = 150$ kg or up to $m_G = 250$ kg per conveyor unit.



AS 2/B drive module



3-18



UM 2/B return unit



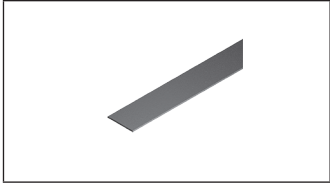
3-24



ST 2/B section, components



3-28

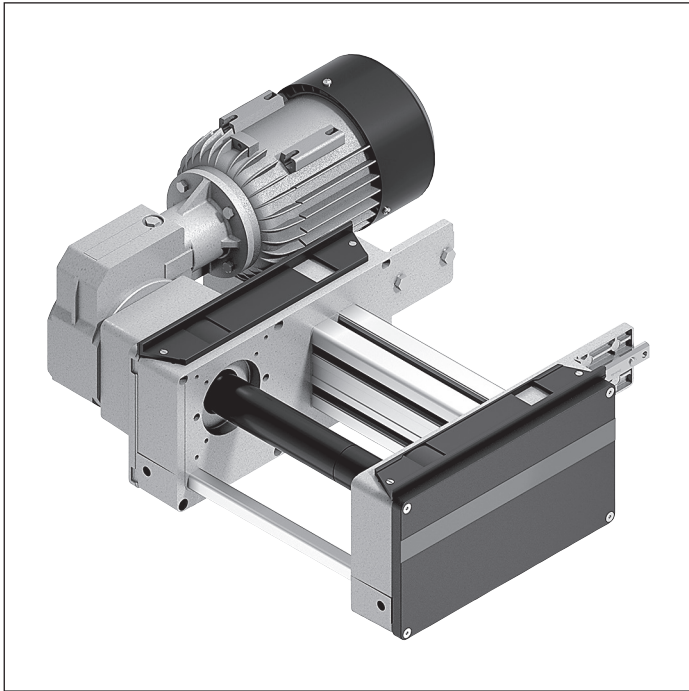


Belt conveyor medium, accessories



3-45

AS 2/B-150 drive module



- ▶ Conveyor medium: Belt (suitable for use in an EPA)
- ▶ Motor connection: optionally with cable/plug or terminal box
- ▶ Special models on request
- ▶ Accumulation operation possible

The AS 2/B-... drive module drives the conveyor medium belt in self-built conveyor section elements with section,

return unit and conveyor belt or serves as a transverse section.

Accessories

Required accessories

- ▶ RB 2 roller track (3842532822, see p. 3-27) with adjacent longitudinal sections and workpiece pallet lengths of < 320 mm
- ▶ RB 2/UM 2 roller track set (3842558657 see p. 5-88) for use in transverse sections with adjacent longitudinal sections

Delivery notes

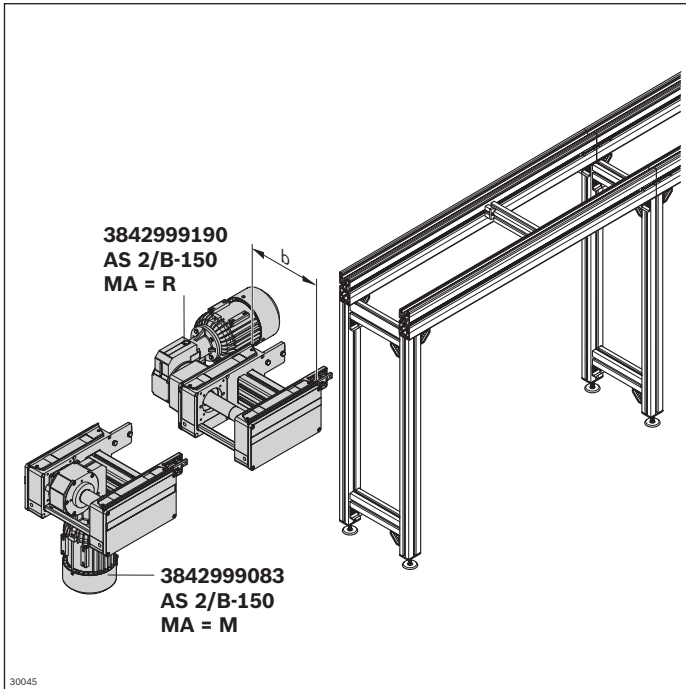
Scope of delivery

- ▶ AS 2/B-150 drive module
- ▶ Includes fastening material to mount on the ST 2 conveyor section, as well as to mount on an adjacent return unit.

Condition on delivery

- ▶ Fully assembled

Ordering information



Material number		3842999083	3842999190
b (mm)	Track width in direction of transport	160; 240; 320; 400; 480; 640; 800; 1040; 1200	160 ... 1200 ¹
v _N (m/min)	Nominal speed	0 ² ; 6; 9; 12; 15 ³ ; 18	
U (V)	Voltage	See motor data, p. 11-24ff	
f (Hz)	Frequency	See motor data, p. 11-24ff	
AT	Motor connection	S; K	
		S = cable/plug K = terminal box	
MA	Motor mounting	R ⁴); L ⁴); M	
		R = right L = left M = center	

¹⁾ Individual width variants available

²⁾ v_N = 0: without motor or gear

³⁾ Not possible at f = 60 Hz

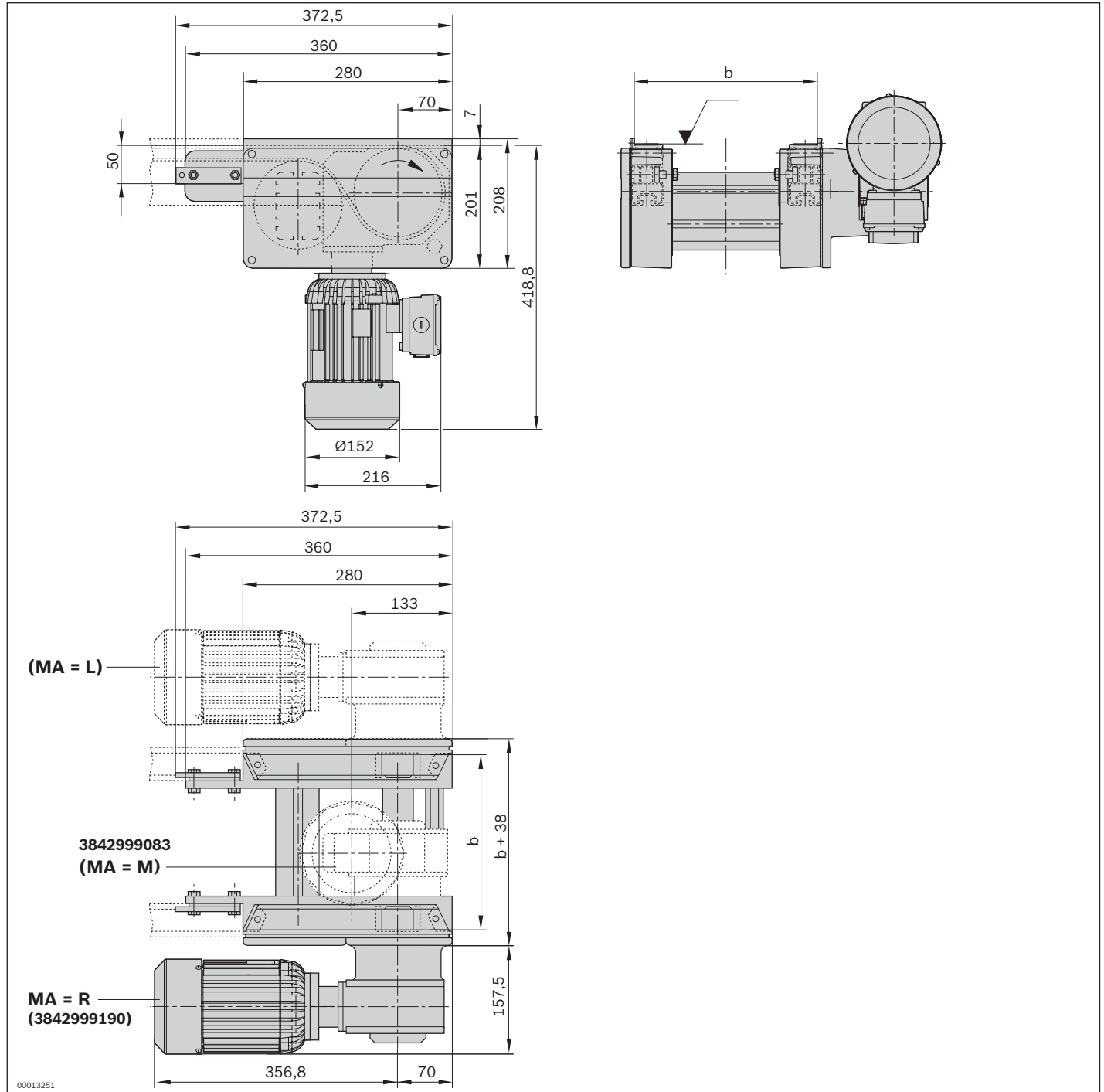
⁴⁾ The following applies to 3842999190: MA = R; L

Technical data

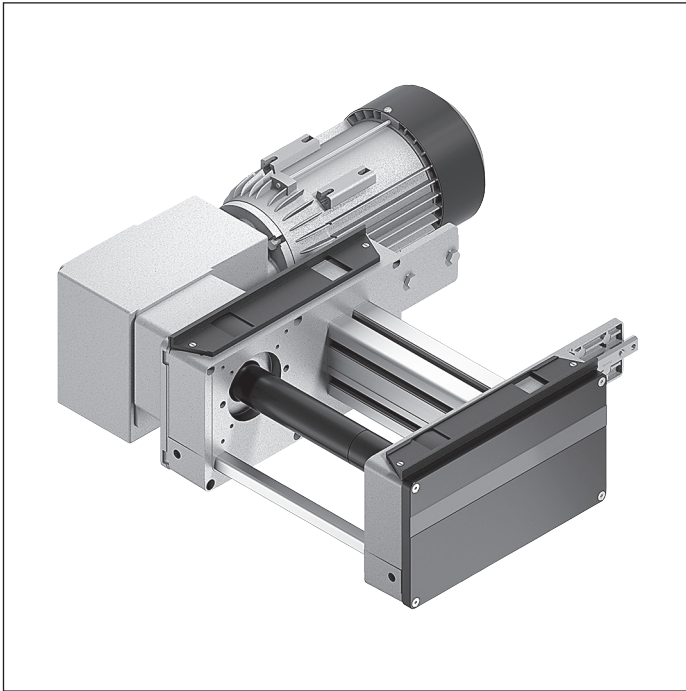
Material number		3842999083	3842999190
Motor mounting		MA = M	MA = R, L
Load			
Max. section load in accumulation operation	kg	150	150
Features			
ESD		Yes	Yes
Additional information			
Required conveyor medium length*	l _{AS} mm	660	660

* Formula for calculating the conveyor medium, see p. 3-46

Dimensions



AS 2/B-250 drive module



- ▶ Conveyor medium: Belt (suitable for use in an EPA)
- ▶ Motor connection: optionally with cable/plug or terminal box
- ▶ Special models on request
- ▶ Accumulation operation possible

3

The AS 2/B-... drive module drives the conveyor medium belt in self-built conveyor section elements with section,

return unit and conveyor belt or serves as a transverse section.

Accessories

Required accessories

- ▶ RB 2 roller track (3842532822, see p. 3-27) with adjacent longitudinal sections and workpiece pallet lengths of < 320 mm
- ▶ RB 2/UM 2 roller track set (3842558657 see p. 5-88) for use in transverse sections with adjacent longitudinal sections

Delivery notes

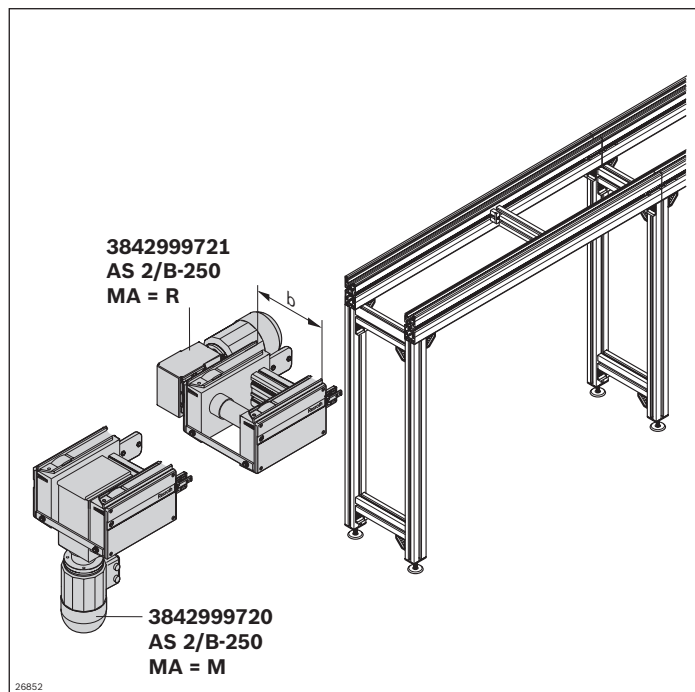
Scope of delivery

- ▶ AS 2/B-250 drive module
- ▶ Includes fastening material to mount on the ST 2 conveyor section, as well as to mount on an adjacent return unit.

Condition on delivery

- ▶ Fully assembled

Ordering information



Material number		3842999720	3842999721
b (mm)	Track width in direction of transport	160; 240 ¹⁾ ; 320; 400; 480; 640; 800; 1040; 1200	240 ... 1200 ²⁾
v _N (m/min)	Nominal speed	0 ³⁾ ; 6; 9; 12; 15; 18	
U (V)	Voltage	See motor data, p. 11-24ff	
f (Hz)	Frequency	See motor data, p. 11-24ff	
AT	Motor connection	S; K	
	S = cable/plug K = terminal box		
MA	Motor mounting	R ⁴⁾ ; L ⁴⁾ ; M ¹⁾	
	R = right L = left M = center		

¹⁾ The following applies to 3842999720: MA = M and b ≥ 240 mm

²⁾ Individual width variants available

³⁾ v_N = 0: without motor or gear

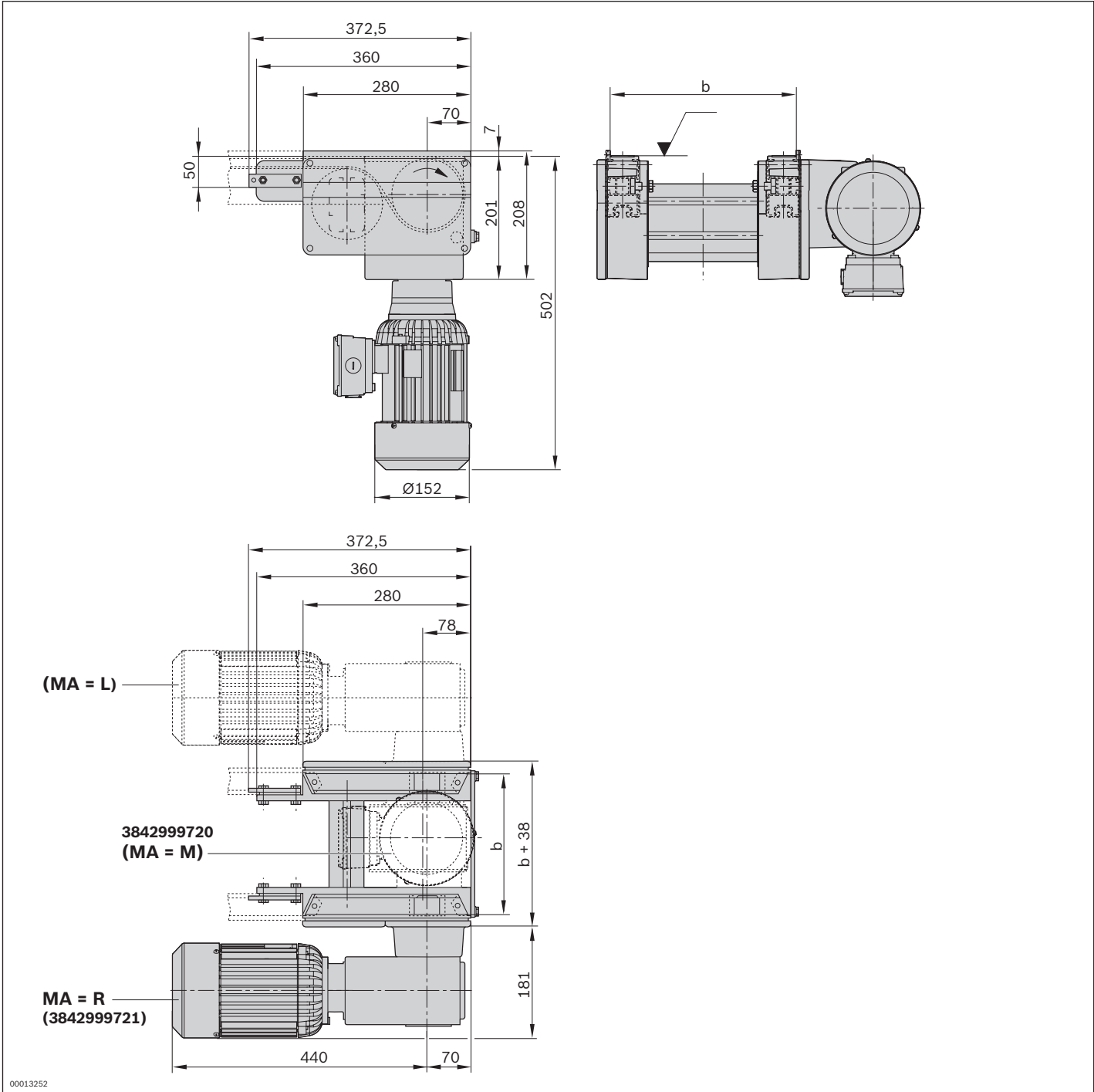
⁴⁾ The following applies to 3842999721: MA = R; L

Technical data

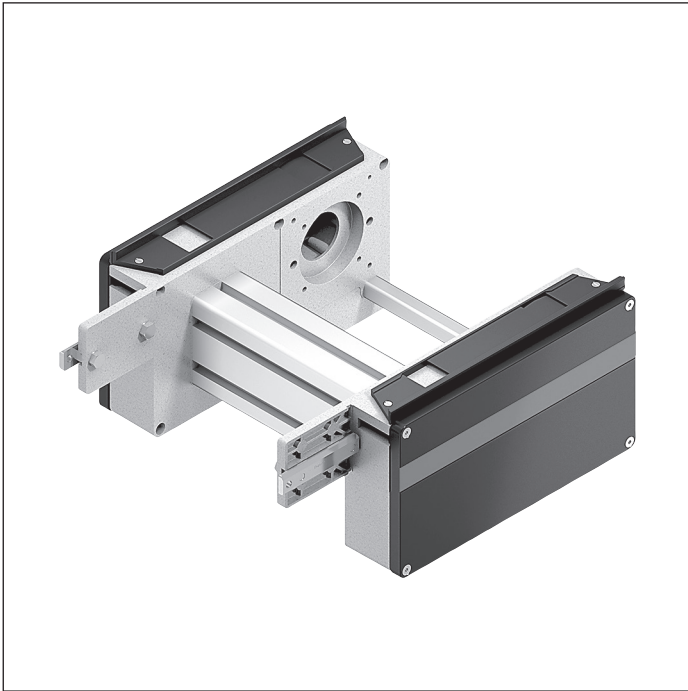
Material number		3842999720	3842999721
Motor mounting		MA = M	MA = R, L
		for b ≥ 240 mm	
Load			
Max. section load in accumulation operation	kg	250	250
Features			
ESD		Yes	Yes
Additional information			
Required conveyor medium length*	l _{AS}	660	660

* Formula for calculating the conveyor medium, see p. 3-46

Dimensions



UM 2/B return unit



- ▶ Conveyor medium: Belt (suitable for use in an EPA)
- ▶ For use in conjunction with all AS 2/B drive modules
- ▶ Max. permissible section load up to 250 kg in accumulation operation per conveyor unit

The return unit is used for constructing conveyor units. It guides the conveyor medium at the end of the conveyor unit back to the drive module.

Delivery notes

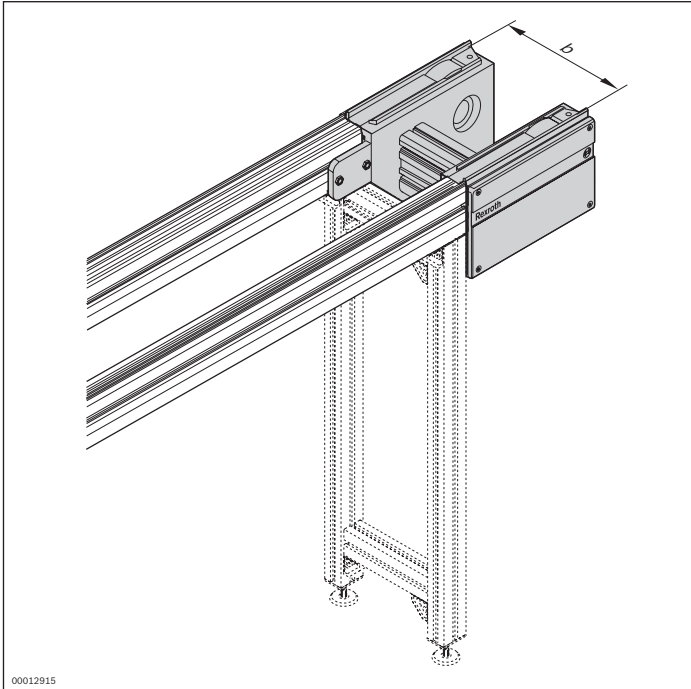
Scope of delivery

- ▶ Incl. all fastening material to mount on ST 2 conveyor section

Condition on delivery

- ▶ Fully assembled

Ordering information



00012915

Material number	3842999090	
b (mm)	Track width in direction of transport	160; 240; 320; 400; 480; 640; 800; 1040; 1200
		160 ... 1200 ¹

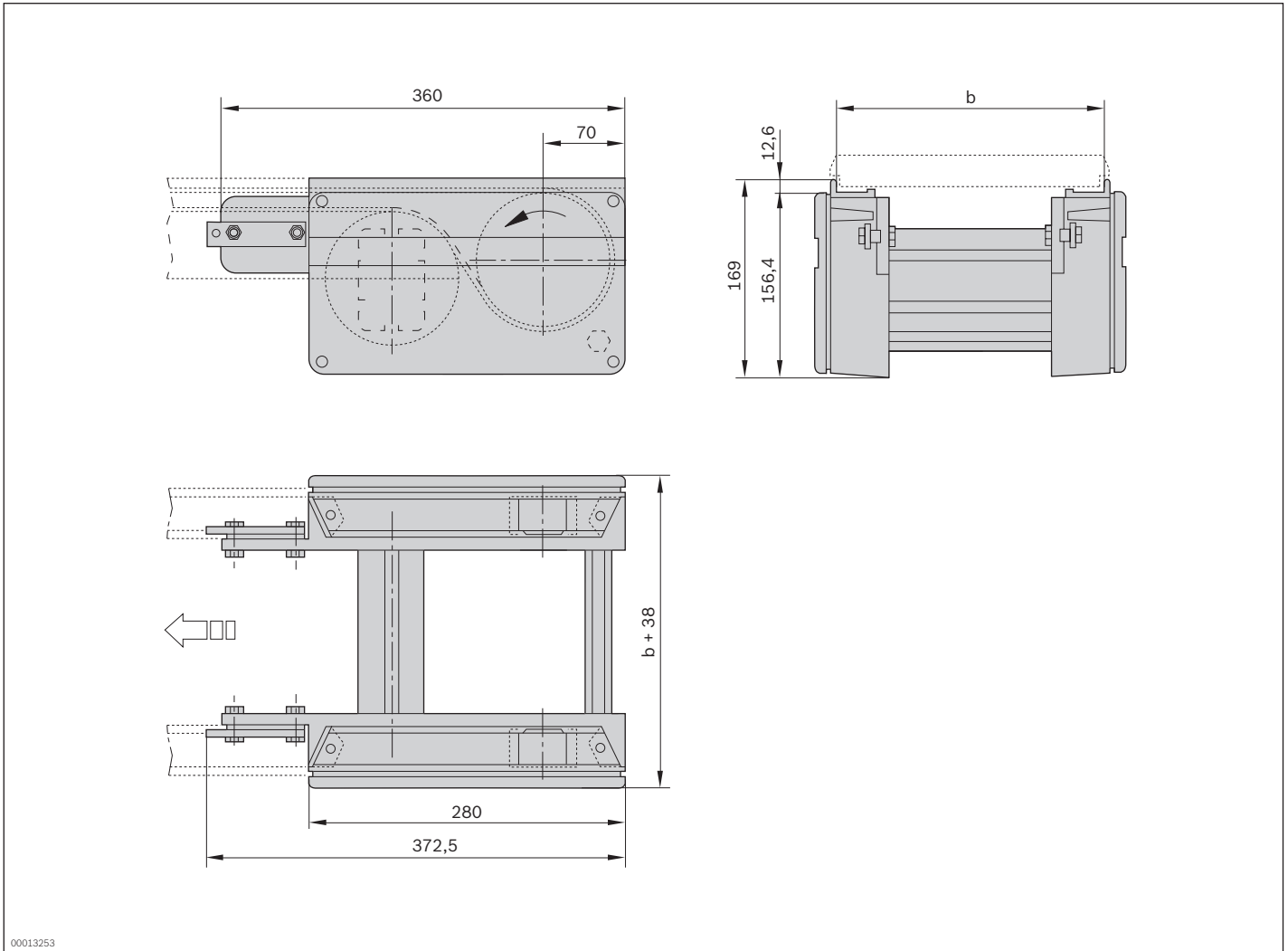
¹ Individual width variants available

Technical data

Material number	3842999090		
Features			
ESD	Yes		
Additional information			
Required conveyor medium length*	l_{UM}	mm	660

* Formula for calculating the conveyor medium, see p. 3-46

Dimensions

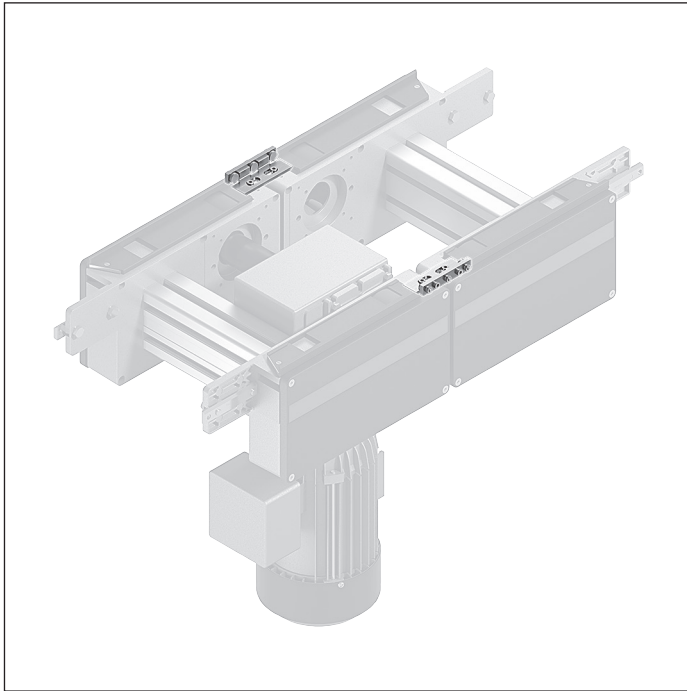


00013253

RB 2 roller track



3



- ▶ It is used to support the workpiece pallets at the transition point between a conveyor unit and another adjacent conveyor unit. Necessary for workpiece pallets with $l_{WT} < 320$ mm.
- ▶ Universal design

Delivery notes

Scope of delivery

- ▶ Incl. fastening material

Condition on delivery

- ▶ Fully assembled

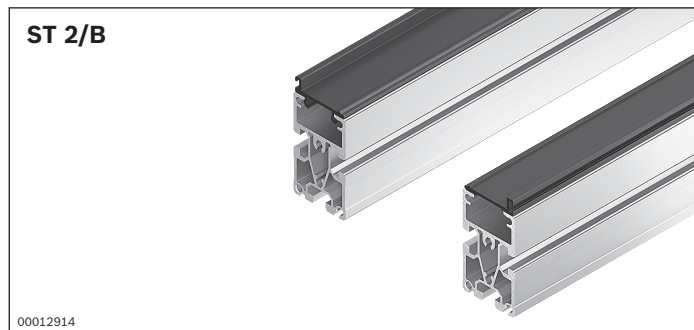
Ordering information

Product designation	Packaging unit	Material number
RB 2 roller track	2	3842532822

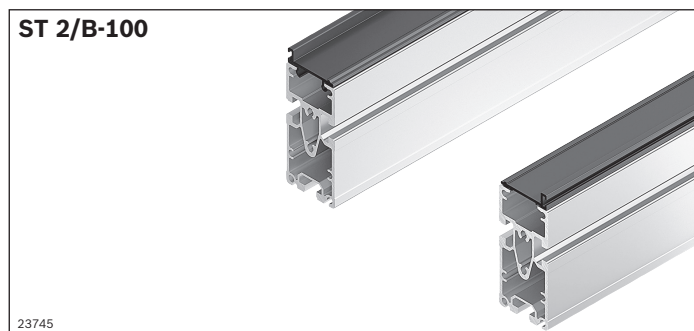
Technical data

Material number	3842532822
Features	
ESD	Yes
Material specification	Roller carrier: Aluminum Rollers: Steel; hardened

ST 2/B section, ST 2/B-100 section



- ▶ For conveyor unit self-assembly
- ▶ Easy insertion of the guide profile into the section profile
- ▶ Easily replaceable when worn out
- ▶ Conveyor medium: Belt (suitable for use in an EPA)



The section is used for self-construction of conveyor units in conjunction with the AS 2/B drive module and the UM 2/B return unit.

Accessories

Recommended accessories

- ▶ SZ 2 leg sets, see page 6-2
- ▶ Profile connector, see p. 3-40
- ▶ Cross connector, see p. 3-41

Delivery notes

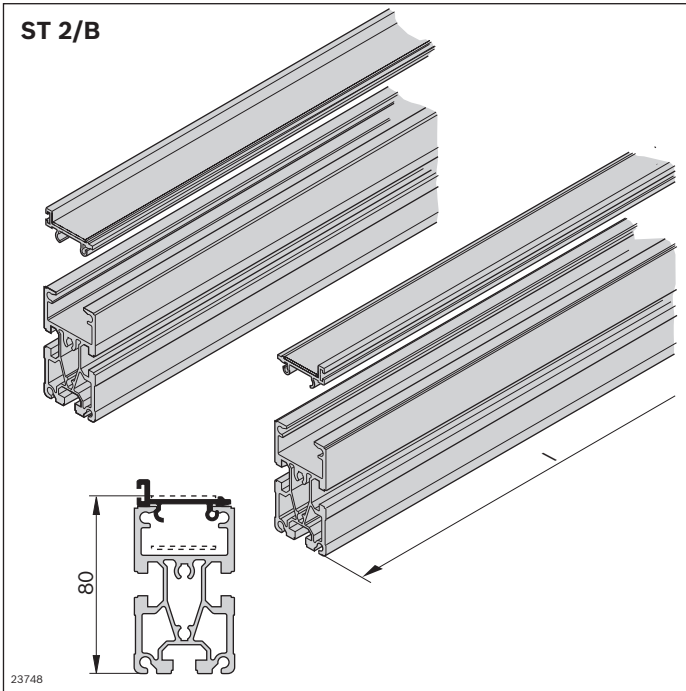
Scope of delivery

- ▶ ST 2/B: 2x SP 2/B section profile, 2x FP 2/B guide profile
- ▶ ST 2/B-100: 2x SP 2/B-100 section profile, 2x FP 2/B guide profile

Condition on delivery

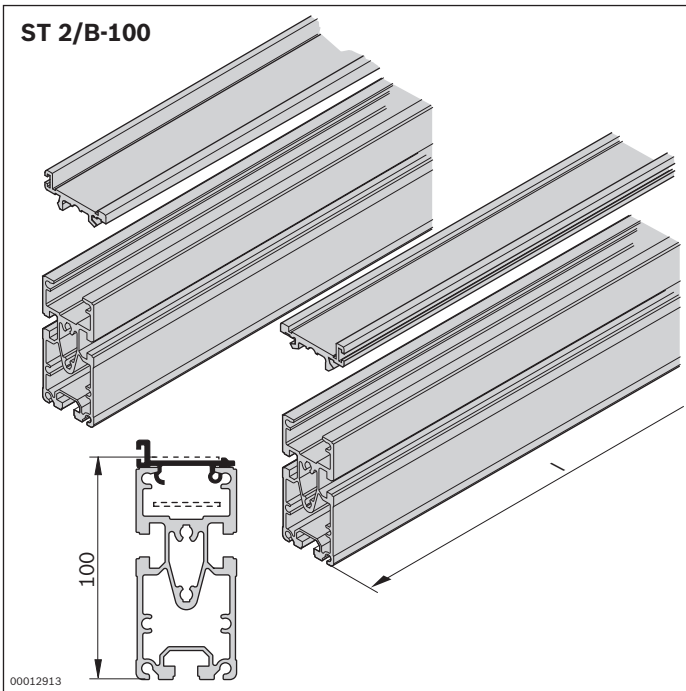
- ▶ Not assembled

Ordering information



ST 2/B section

Material number		3842992650
l (mm)	Length	60 ... 6000
h (mm)	Height to conveying level	80



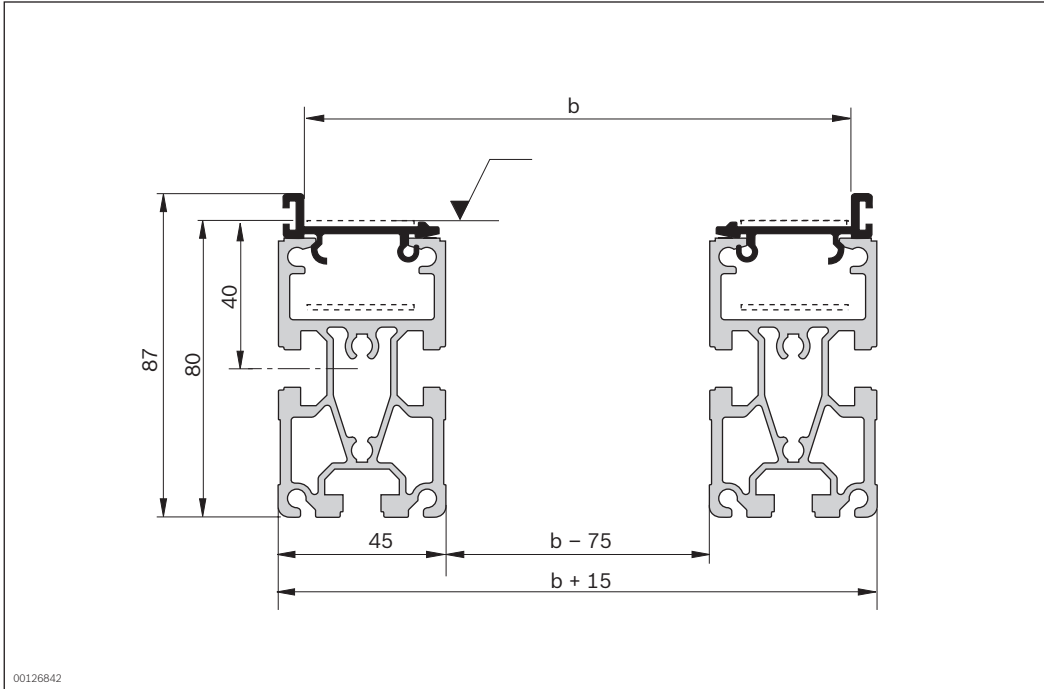
ST 2/B-100 section

Material number		3842994927
l (mm)	Length	60 ... 6000
h (mm)	Height to conveying level	100

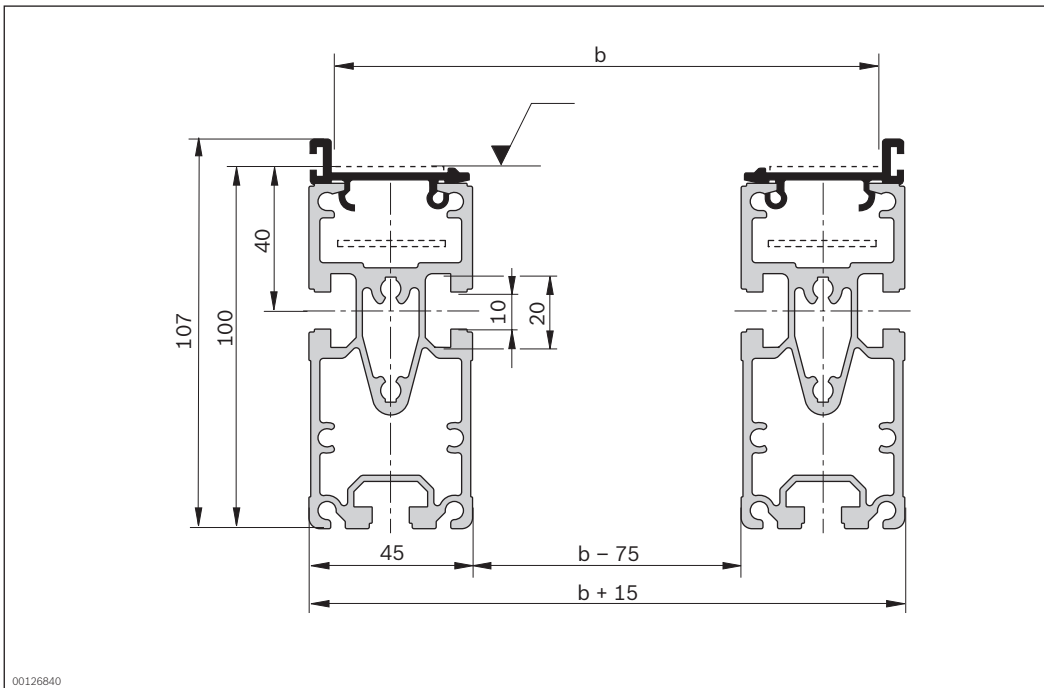
Technical data

Material number		3842992650	3842994927
Product designation		ST 2/B section	ST 2/B-100 section
Features			
ESD		Yes	Yes
Material specification		Section profile: Aluminum; anodized Guide profile: polyamide	Section profile: Aluminum; anodized Guide profile: polyamide
Dimensions			
Length	l	mm	60 ... 6000
Height to conveying level	h	mm	80
			100

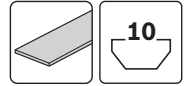
Dimensions
ST 2/B



ST 2/B-100



SP 2/B section profile



3



- ▶ Used for self-construction of low-profile conveyor units and the conveyor media belt
- ▶ For use in conjunction with all AS 2/B drive modules, UM 2/B return units and FP 2/B guide profiles
- ▶ Longitudinal grooves for easy mounting
- ▶ ST 2/B to be used in sections

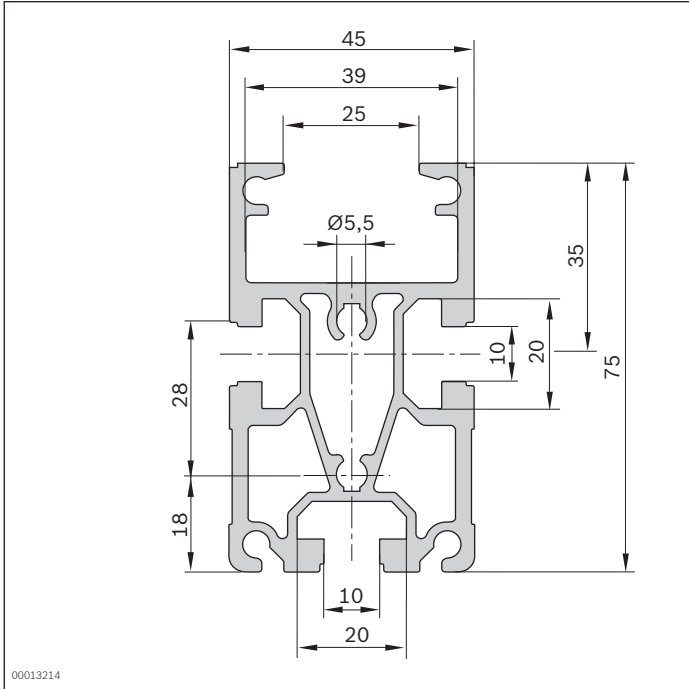
Ordering information

Product designation	l (mm)	Delivery unit	Material number
SP 2/B 16 x 6070 mm section profile	6070	16	3842532695
SP 2/B section profile	60 ... 6000		3842992884

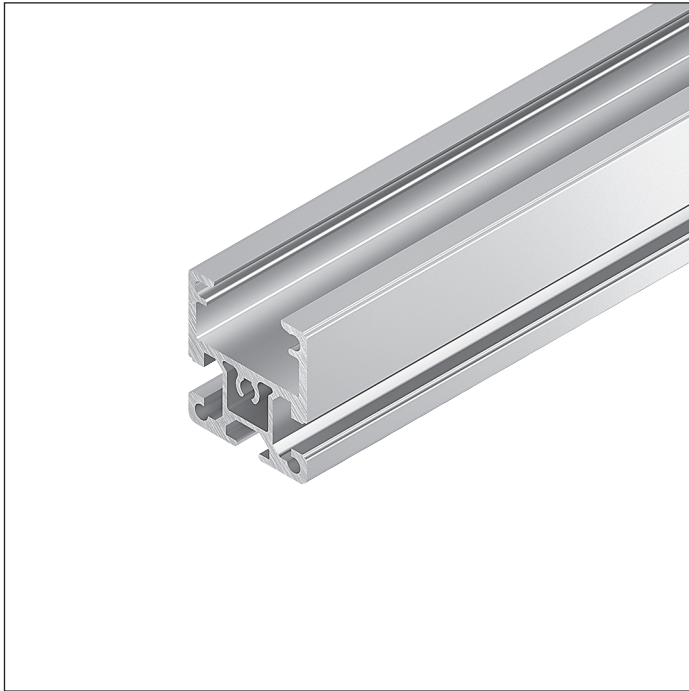
Technical data

Material number		3842532695		3842992884	
Load					
Moment of inertia	I_x	cm ⁴	49.6	49.6	
	I_y	cm ⁴	25.8	25.8	
Moment of resistance	W_x	cm ³	12.1	12.1	
	W_y	cm ³	11.5	11.5	
Features					
Material specification			Aluminum, natural; anodized	Aluminum, natural; anodized	
Mass	m	kg/m	2.8	2.8	
Dimensions					
Length	l	mm	6070		
Length	l	mm	60 ... 6000		
Profile surface	A	cm ²	10.4	10.4	

Dimensions



SP 2/B-50 section profile



- ▶ Used for self-construction of low-profile conveyor units and the conveyor media belt
- ▶ For use in conjunction with all AS 2/B drive modules, UM 2/B return units and FP 2/B guide profiles
- ▶ Longitudinal grooves for easy mounting
- ▶ Suitable for installation at manual workplaces

3

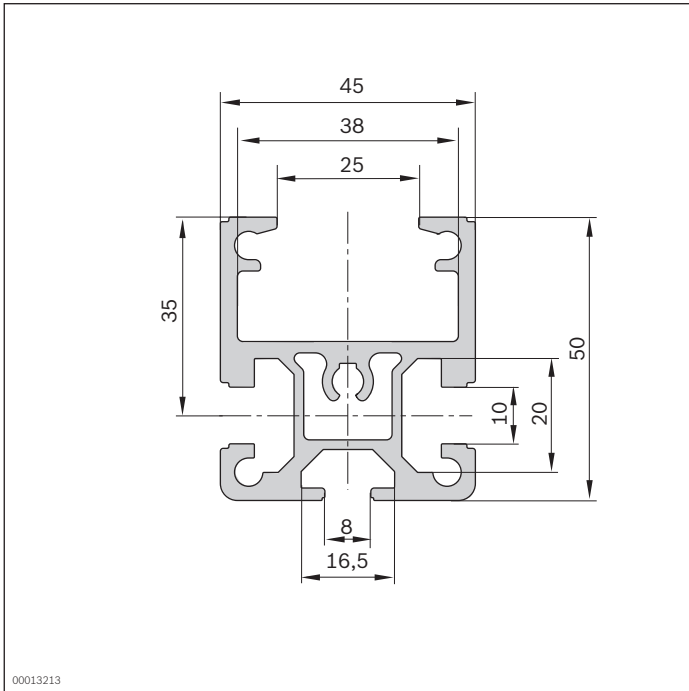
Ordering information

Product designation	l (mm)	l (mm)	Delivery unit	Material number
SP 2/B-50 20 x 6070 mm section profile	6070		20	3842532697
SP 2/B-50 section profile		60 ... 6000		3842992903

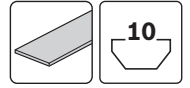
Technical data

Material number		3842532697		3842992903	
Load					
Moment of inertia	I_x	cm^4	46.2		46.2
	I_y	cm^4	16.9		16.9
Moment of resistance	W_x	cm^3	5.3		5.3
	W_y	cm^3	7.5		7.5
Features					
Material specification			Aluminum, natural; anodized	Aluminum, natural; anodized	
Mass	m	kg/m	1.9	1.9	
Dimensions					
Length	l	mm	6070		
Length	l	mm		60 ... 6000	
Profile surface	A	cm^2	6.9	6.9	

Dimensions



SP 2/BH section profile



- ▶ Used for self-construction of low-profile conveyor units and the conveyor media belt
- ▶ For use in conjunction with all AS 2/B drive modules, UM 2/B return units and FP 2/B guide profiles
- ▶ Longitudinal grooves for easy mounting
- ▶ In tough design

3

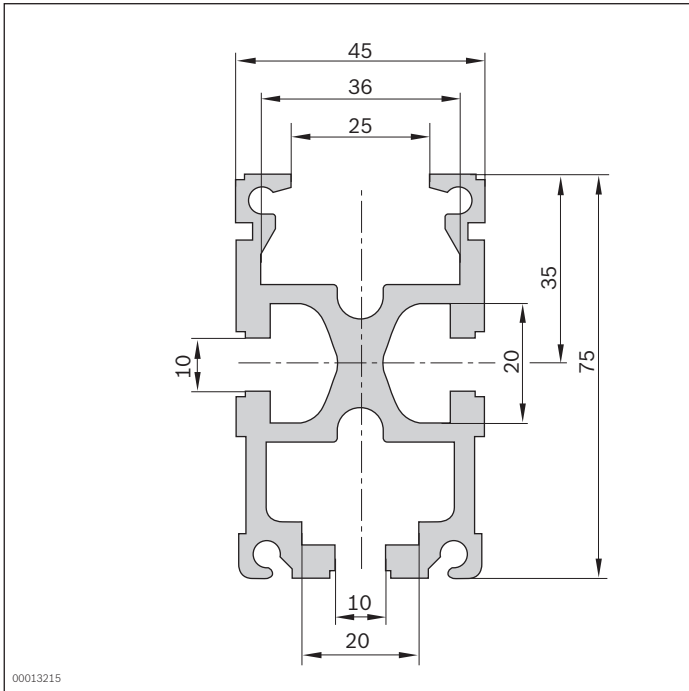
Ordering information

Product designation	l (mm)	l (mm)	Delivery unit	Material number
SP 2/BH 16 x 6070 mm section profile	6070		16	3842532696
SP 2/BH section profile		60 ... 6000		3842990409

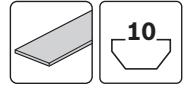
Technical data

Material number		3842532696		3842990409	
Load					
Moment of inertia	I_x	cm ⁴	53.7	53.7	
	I_y	cm ⁴	28.6	28.6	
Moment of resistance	W_x	cm ³	14.0	14.0	
	W_y	cm ³	13.8	13.8	
Features					
Material specification			Aluminum, natural; anodized	Aluminum, natural; anodized	
Mass	m	kg/m	3.3	3.3	
Dimensions					
Length	l	mm	6070		
Length	l	mm	60 ... 6000		
Profile surface	A	cm ²	12.4	12.4	

Dimensions



SP 2/B-100 section profile



- ▶ Used for self-construction of conveyor units with a height of 100 mm and the conveyor medium belt
- ▶ For use in conjunction with all AS 2/B drive modules, UM 2/B return units and FP 2/B guide profiles
- ▶ Longitudinal grooves for easy mounting
- ▶ For use in assembly systems with mixed conveyor media, e.g., belt and flat top chain

3

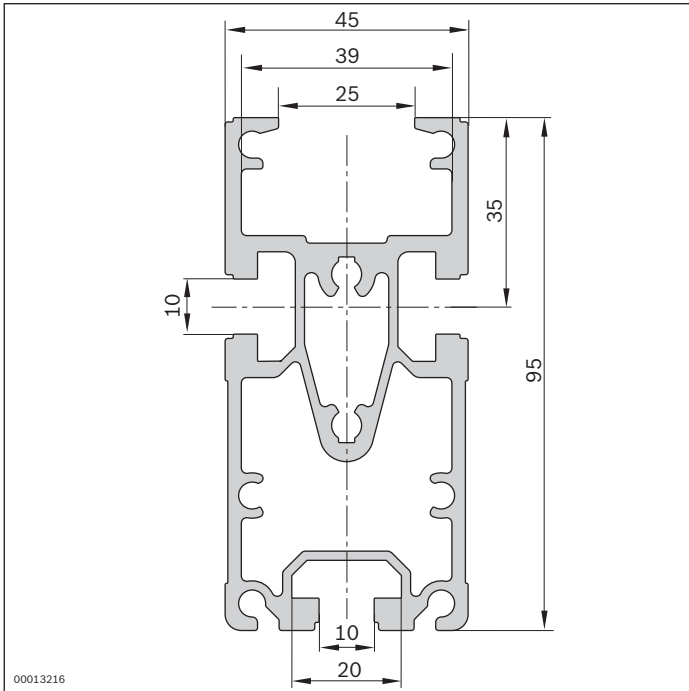
Ordering information

Product designation	l (mm)	l (mm)	Delivery unit	Material number
SP 2/B-100 16 x 6070 mm section profile	6070		16	3842532608
SP 2/B-100 section profile		60 ... 6000		3842993259

Technical data

Material number		3842532608		3842993259	
Load					
Moment of inertia	I_x	cm ⁴	95.1	95.1	
	I_y	cm ⁴	30.4	30.4	
Moment of resistance	W_x	cm ³	20.0	20.0	
	W_y	cm ³	13.5	13.5	
Features					
Material specification			Aluminum, natural; anodized	Aluminum, natural; anodized	
Mass	m	kg/m	3.2	3.2	
Dimensions					
Length	l	mm	6070		
Length	l	mm	60 ... 6000		
Profile surface	A	cm ²	11.9	11.9	

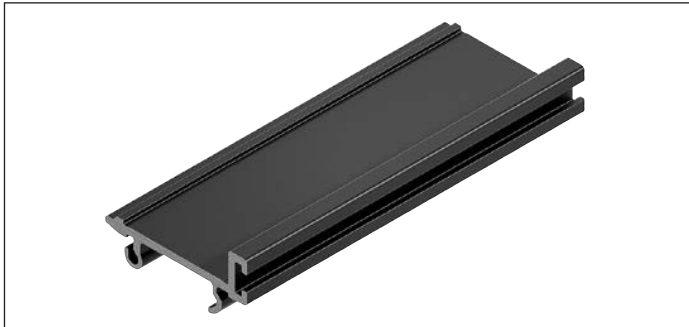
Dimensions



FP 2/B guide profile



3



- ▶ For belt guide
- ▶ For clipping onto the SP 2/B section profiles

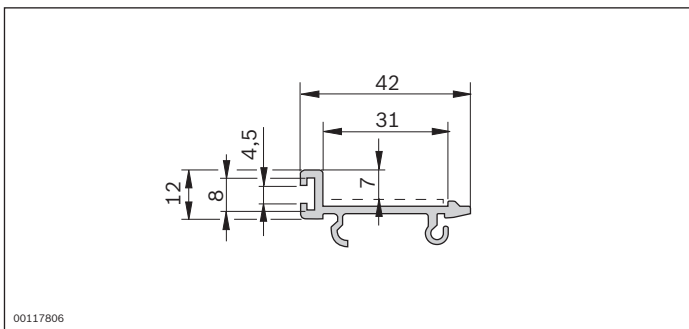
Ordering information

Product designation	l (mm)	Delivery unit	Material number
FP 2/B guide profile	6000	16	3842532675

Technical data

Material number	3842532675		
Features			
ESD	Yes		
Material specification	Plastic, PA (suitable for use in an EPA)		
Dimensions			
Length	l	mm	6000

Dimensions



Profile connector



- ▶ For the end-to-end connecting of two profiles SP 2/...
Two profile connectors are required for each profile joint
- ▶ For conveyor unit self-assembly
- ▶ For use in conjunction with all AS 2/B drive modules,
UM 2/B return units and SP 2/B section profiles

Delivery notes

Scope of delivery

- ▶ Profile connector, screws

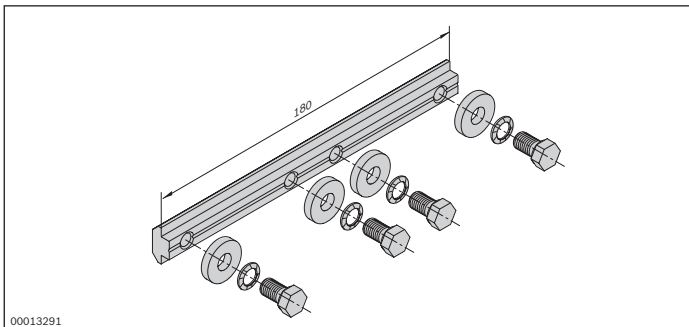
Ordering information

Product designation	Material number
Profile connector	3842528746

Technical data

Material number	3842528746
Features	
Material specification	Steel; galvanized

Dimensions



QV 2 cross connector



- ▶ For conveyor unit self-assembly
- ▶ For connecting section profiles and defining the track width
- ▶ Can be combined with all SP 2 section profiles

3

Formula for calculating the number of cross connectors needed

$$A_{QV} = (l/2000 \text{ mm}) + 1$$

A_{QV} = Number of cross connectors

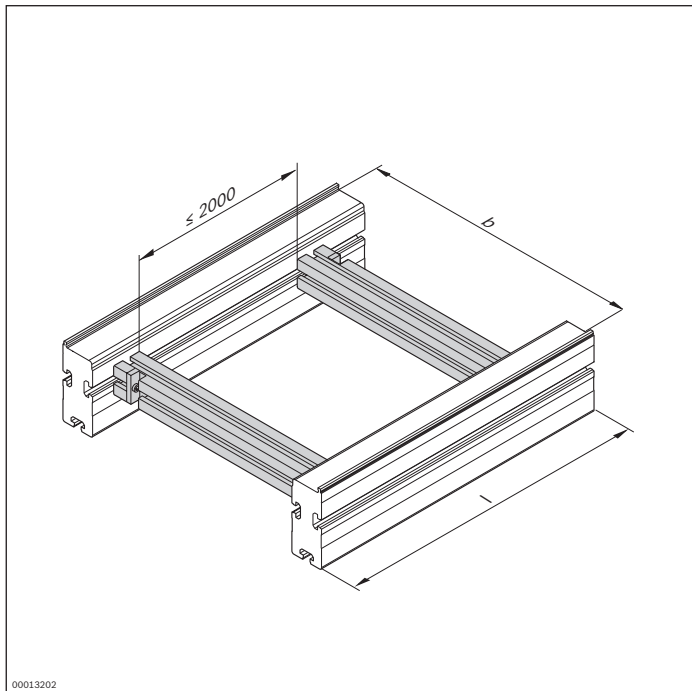
l = section length

Delivery notes

Scope of delivery

- ▶ 45x60 strut profile, finished
- ▶ 2x fastening material to mount on an ST 2 section

Ordering information



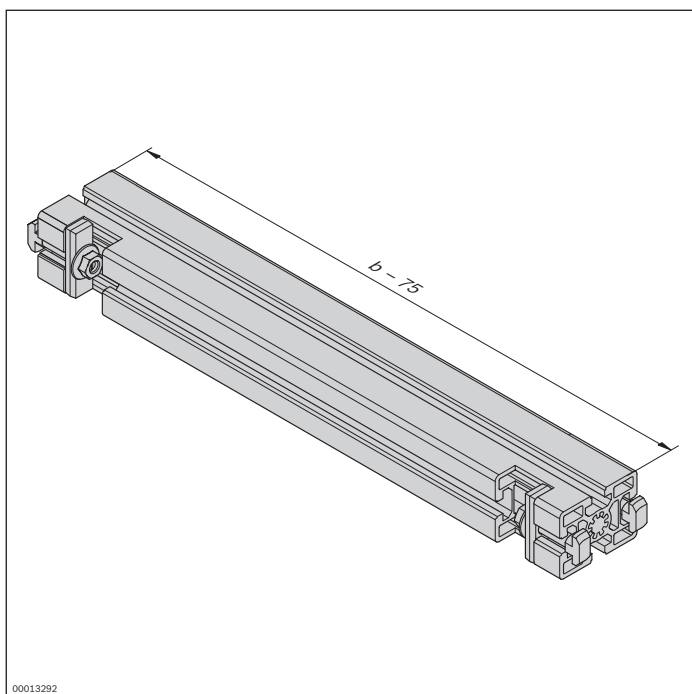
Material number		3842994635
b (mm)	Track width in direction of transport	160; 240; 320; 400; 480; 640; 800; 1040; 1200
		160 ... 1200 ¹

¹ Individual width variants available

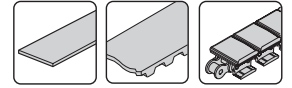
Technical data

Material number	3842994635
Features	
Material specification	Aluminum, natural; anodized

Dimensions



Scraper



3



- ▶ To scrape small parts from the conveyor medium
- ▶ For use with workpiece pallets with a minimum weight of 3 kg
- ▶ Conveyor media: Belt, toothed belt and flat top chain
- ▶ May be mounted on the right side (R) or left side (L)
- ▶ Reversible operation is not possible on sections with scrapers

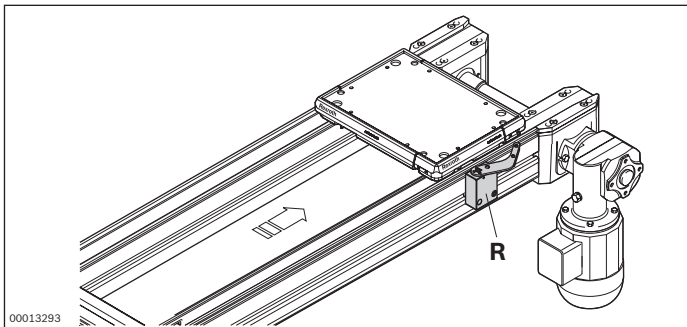
Delivery notes

Scope of delivery

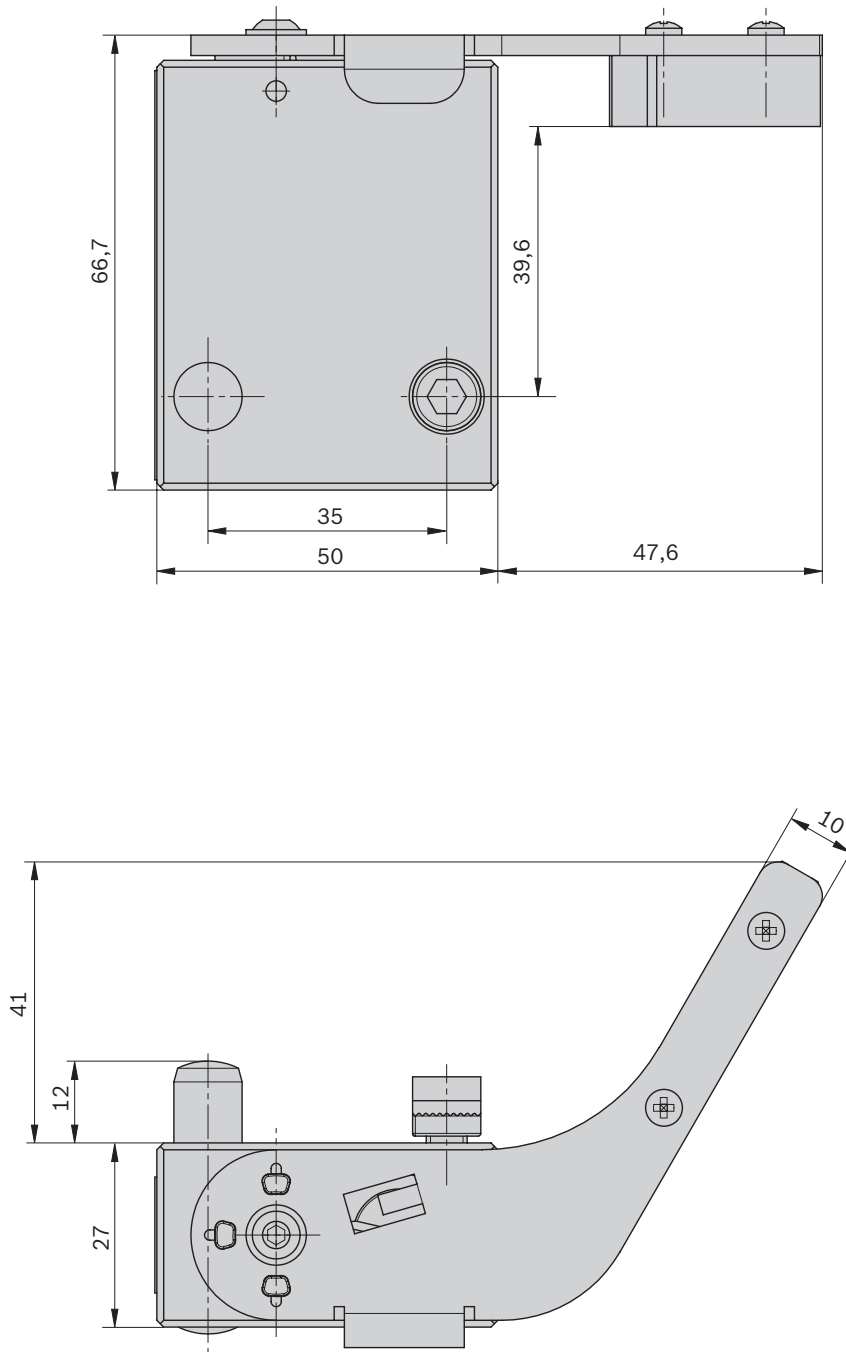
- ▶ 1x scraper, right or left, including fastening material

Ordering information

Product designation	Material number
Scraper, right	3842532679
Scraper, left	3842532680

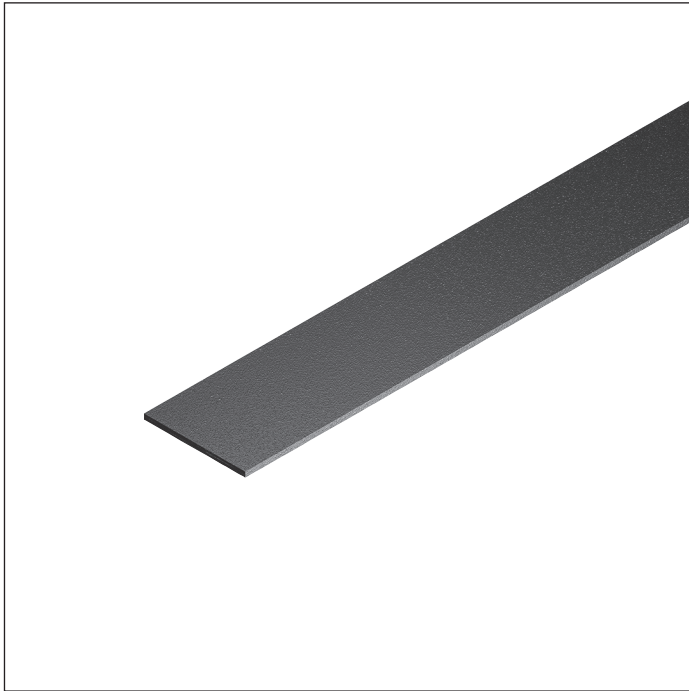


Dimensions



27630

GT 2 belt



The belt used as a conveyor medium transports the workpiece pallets into the transfer system. The belts are pretensioned during installation and bonded to form a

continuous belt. A belt assembly tool kit is used for jointing, tensioning and bonding.

Accessories

Required accessories

- ▶ Belt mounting tool kit, see p. 3-48
- ▶ Glue, see p. 3-47

Ordering information

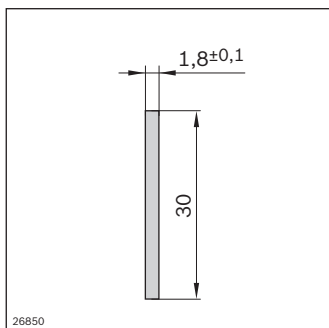
Product designation	l (m)	l (m)	Material number
GT 2 belt	250		3842539479
GT 2 belt		1 ... 250 ¹	3842992811

¹ Order and delivery are only possible up to the next full meter

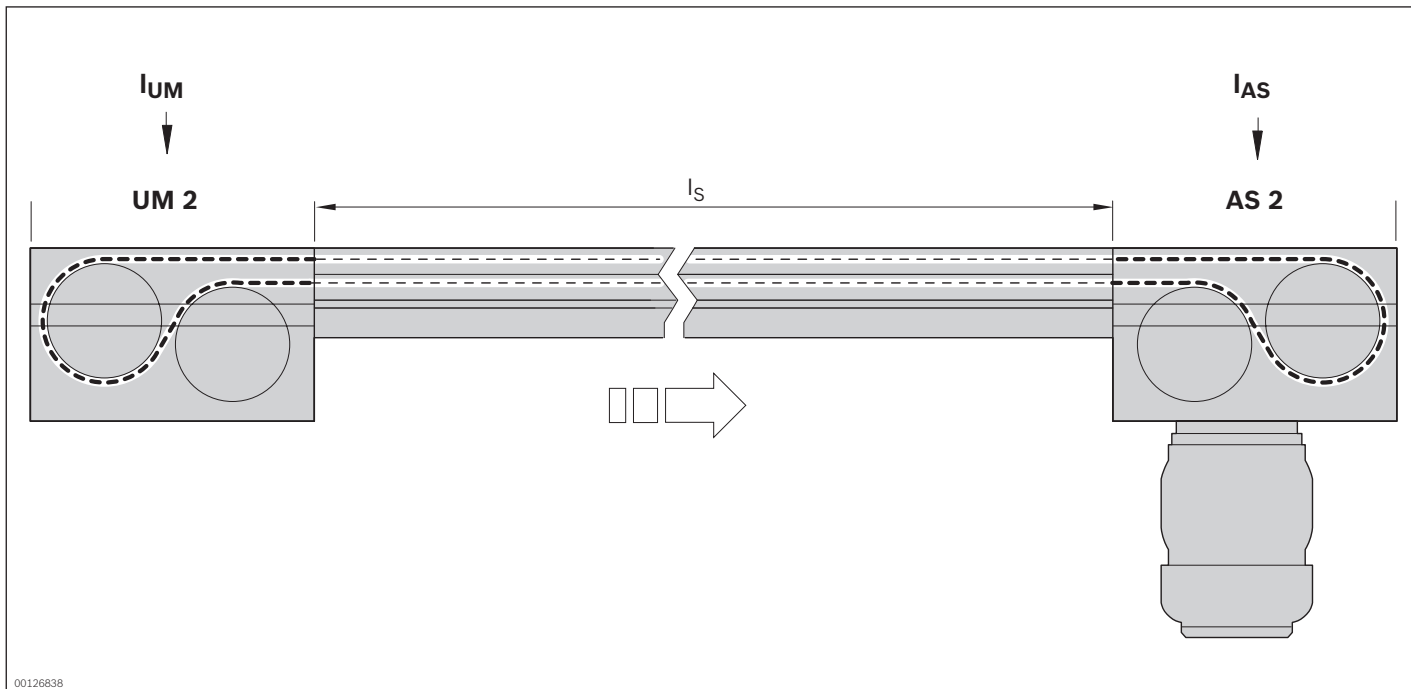
Technical data

Material number	3842539479		3842992811
Features			
ESD		Yes	Yes
Material specification		Polyamide (PA)	Polyamide (PA)
Dimensions			
Length	l	m	250
Length	l	m	1 ... 250

Dimensions



Calculating the required length of the conveyor medium



The required belt length is determined using the following formula.

Note: A pretensioning factor F is required for the belt, see the "Pretensioning factor F for belts" overview.

$$l_B = ((2 \times l_s + l_{AS} + l_{UM}) \times F) + 60$$

l_B = Length of belt

l_s = Length of section

l_{AS} = Length of the conveyor medium at the drive module

l_{UM} = Length of the conveyor medium at the return unit

F = pretensioning factor

Pretensioning factor F for belt

With BS 2, when $l_s \leq 4000$ mm, $F = 0.98$

With BS 2, when $l_s > 4000$ mm, $F = 0.975$

With AS 2/B-250, $F = 0.965$

Length of the conveyor medium for belt

$l_{UM} = 660$ mm

$l_{AS} = 660$ mm

Belt expansion

at $l_s \leq 4000$ mm, = 2%

at $l_s > 4000$ mm = 2.5%

at AS 2/B-250, = 3,5%

Glue



3

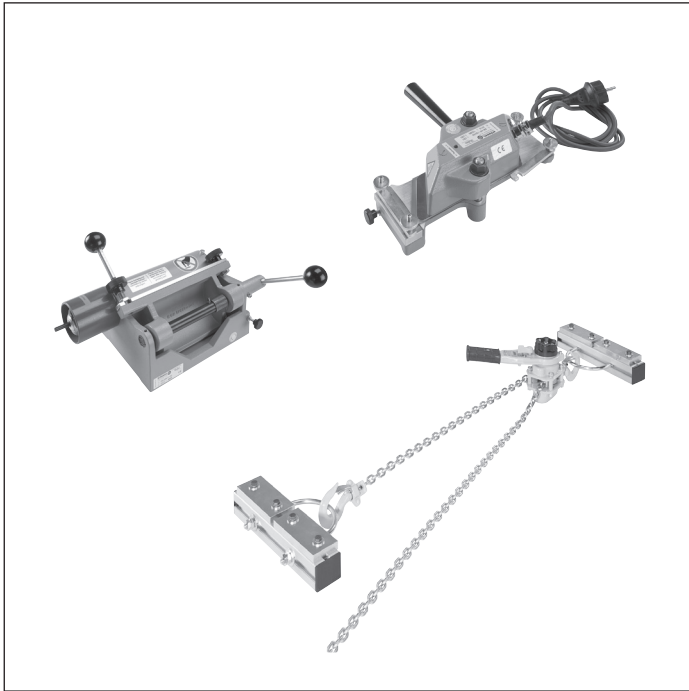


- ▶ Used for bonding belts
- ▶ For use in connection with the belt assembly tool kit
- ▶ For industrial use only
- ▶ Follow the safety instructions

Ordering information

Product designation	Material number
Glue, 50 ml	3842315106

Belt assembly tool



- ▶ Skiving device for reducing belts at connection points
- ▶ Heat press to glue the belt ends thermally
- ▶ Belt pretensioning device

The belt assembly tool is used to join the ends of belts for section lengths $l > 2000$ mm.

Accessories

Required accessories

- ▶ Glue, see p. 3-47

Delivery notes

Scope of delivery

- ▶ Skiving device
- ▶ Heating press
- ▶ Pretensioning device
- ▶ Abrasive belt
- ▶ Brush

Recommended accessories

- ▶ Second heating press for the simultaneous bonding of adjacent belts

Ordering information

Product designation	Material number
Heating press, single	3842315101
Belt mounting tool kit	3842532810