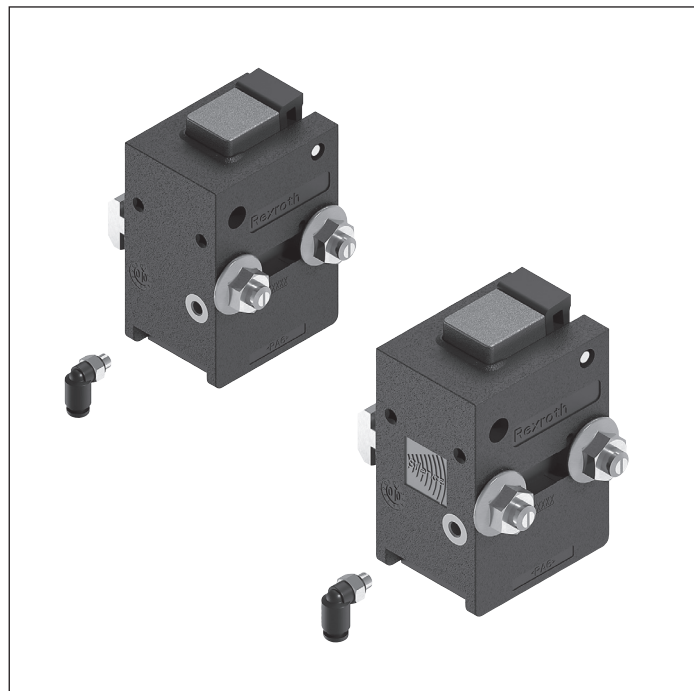


VE 2 stop gate

The VE 2 stop gates are used to stop and separate workpiece pallets, e.g., in an automated station. Actuation is performed pneumatically. In an unpressurized state, the stop gate is held in the blocking position by a spring and thus contributes significantly to production safety.

Stop gates are available with and without integrated shock absorbers.

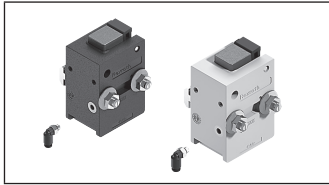


Depending on the application and available space, stop gates may be mounted inside or outside the workpiece pallet.

Stop gates have mounting areas for sensors, which are used to monitor whether a workpiece pallet is standing at a stop gate or has passed it.

Dampened stop gates are used on conveyors where shock-sensitive and fragile parts are conveyed at speeds of up to 18 m/min.

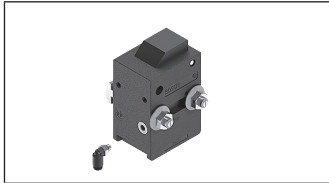
All versions are designed as pneumatic stop gate with infinitely adjustable damping. This reduces the force of impact by up to 80% compared to an uncushioned stop gate. Dampened stop gates are not suitable for accumulation stop.



Stop gate
VE 2, VE 2/L, VE 2/M



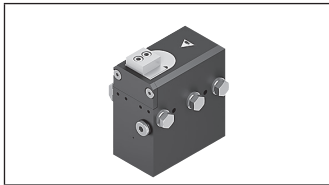
8-6



VE 2/S stop gate



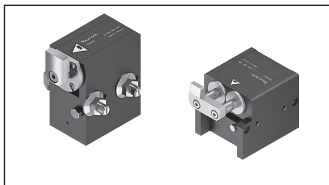
8-15



VE 2/X stop gate



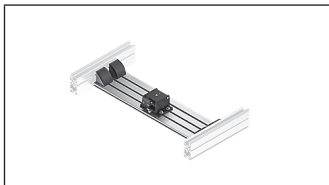
8-21



Stop gate
VE 2/D-60, VE 2/D-175, VE 2/D-200



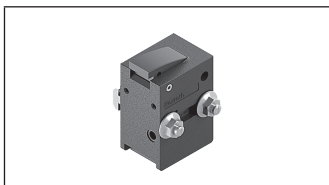
8-24



Stop gate
VE 2/D100-H, VE 2/D250-H



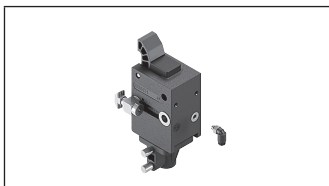
8-33



Return stops
VE 2/RS, VE 2/RS-H



8-40

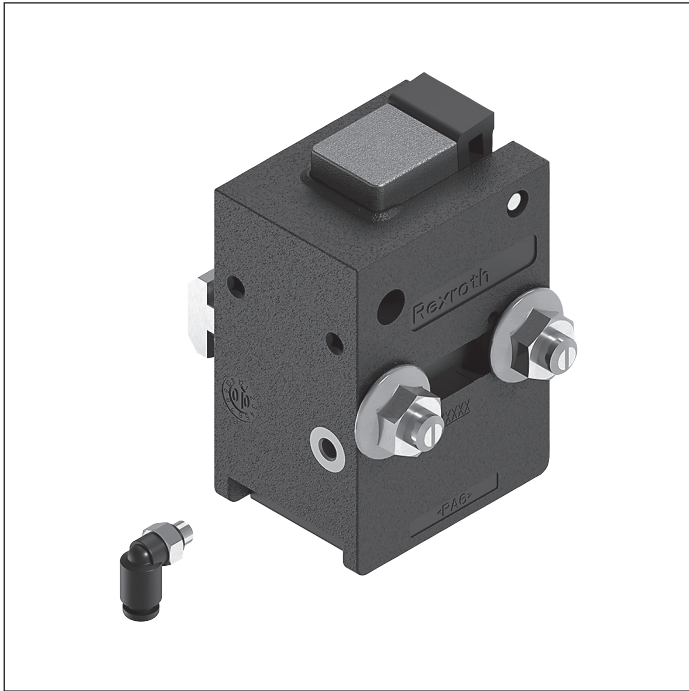


Slide stops
VA 2/50, VA 2/D-130, VA 2/D-250



8-46

VE 2 stop gate



- ▶ Pneumatic stop gate
- ▶ Tilting stop gate; can be opened without causing abrasion on the surface of the workpiece pallet stop surface
- ▶ Reversible operation not permitted
- ▶ Can be combined with WT 2/E, WT 2 and WT 2/F

Stops one or more accumulating workpiece pallets at the defined stop surface of the workpiece pallet. When the pressure is released the stop gate is closed by a spring and

the workpiece pallet is stopped. Mounted inside the tracks, directly on the conveyor section.

Accessories

Recommended accessories

- ▶ VE 2/RS return stop, see p. 8-40
- ▶ SH 2 switch bracket, see p. 8-88
- ▶ Position sensor, see p. 8-18

Delivery notes

Scope of delivery

- ▶ Incl. all fastening material to mount on ST 2 conveyor section
- ▶ Pneumatic elements

Condition on delivery

- ▶ Fully assembled

Ordering information

Product designation	Material number
VE 2 stop gate	0842900300

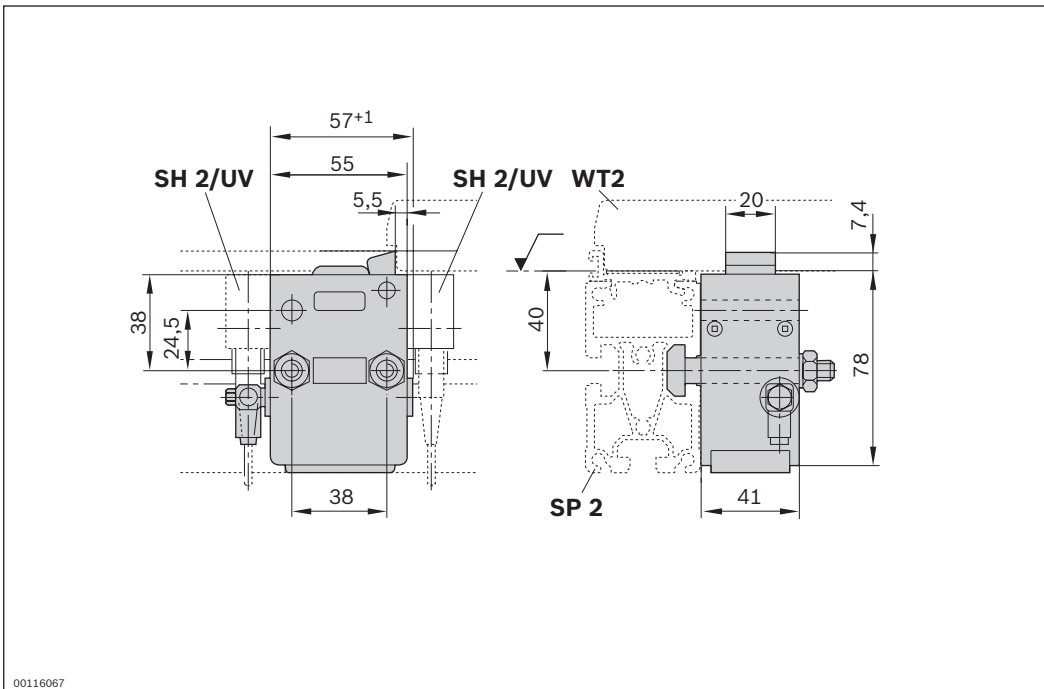
Technical data

Material number			0842900300
Load			
Max. total weight of workpiece pallet	m_G	kg	200
Features			
Material specification	Housing: PA6 Safety catch: Brass Lug cam: PA66		
Operating temperature ¹		°C	0 ... +60
Additional information			
Required compressed air connection	p	bar	4 ... 6
Pneumatic connector	d	mm	4

¹ High-temperature stop gate on request

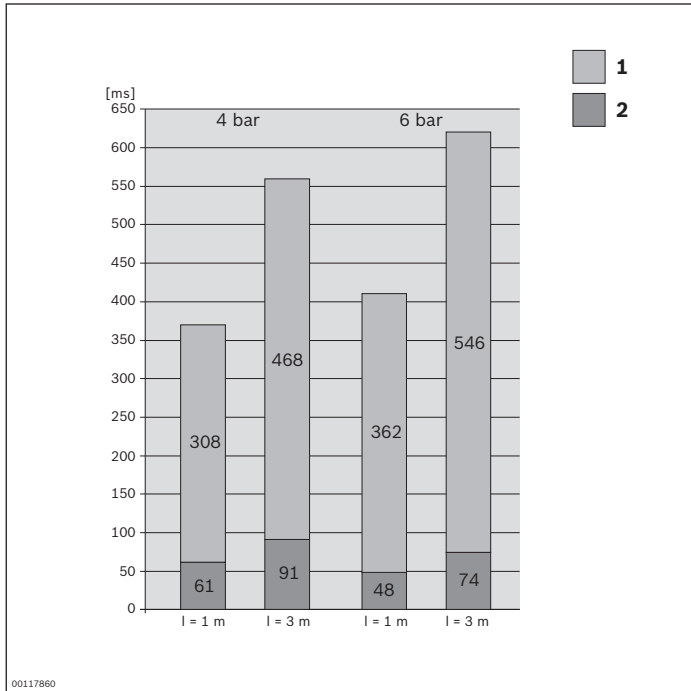
Permitted total weight of workpiece pallet m_G (kg)	Nominal speed v_N (m/min)
200	6
140	9
100	12
70	15
50	18

Dimensions



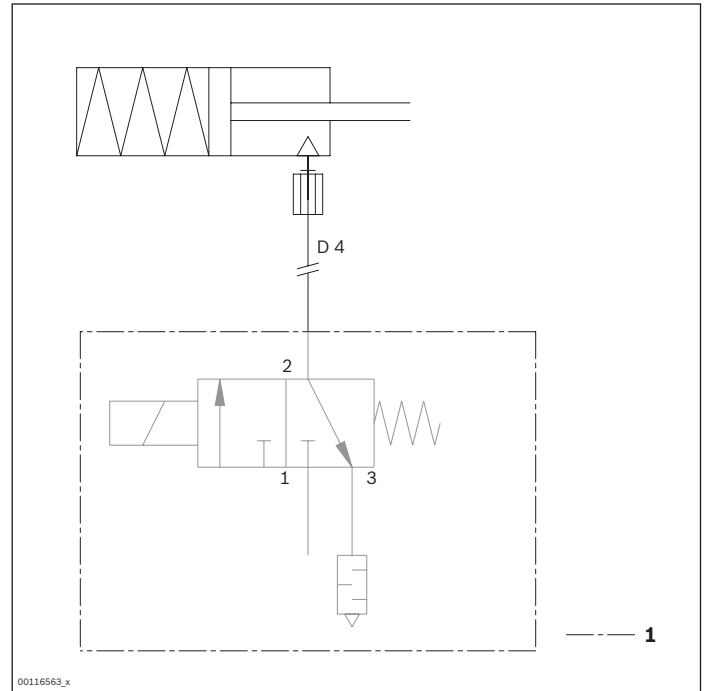
Circuit diagrams

Opening and shutting times



l = Hose length
1 Close
2 Open at 4 bar

Circuit diagram



1 Not included in delivery

VE 2/L stop gate



- ▶ Pneumatic stop gate
- ▶ Low-noise; especially quiet operation during opening and closing, therefore especially suitable for manual workstations
- ▶ Tilting stop gate; can be opened without causing abrasion on the surface of the workpiece pallet stop surface
- ▶ Reversible operation not permitted
- ▶ Can be combined with WT 2/E, WT 2 and WT 2/F

8

Stops one or more accumulating workpiece pallets at the defined stop surface of the workpiece pallet. When the pressure is released the stop gate is closed by a spring and

the workpiece pallet is stopped. Mounted inside the tracks, directly on the conveyor section.

Accessories

Recommended accessories

- ▶ VE 2/RS return stop, see p. 8-40
- ▶ SH 2 switch bracket, see p. 8-88
- ▶ Position sensor, see p. 8-18

Delivery notes

Scope of delivery

- ▶ Incl. all fastening material to mount on ST 2 conveyor section
- ▶ Pneumatic elements

Condition on delivery

- ▶ Fully assembled

Ordering information

Product designation	Material number
VE 2/L stop gate	3842530630

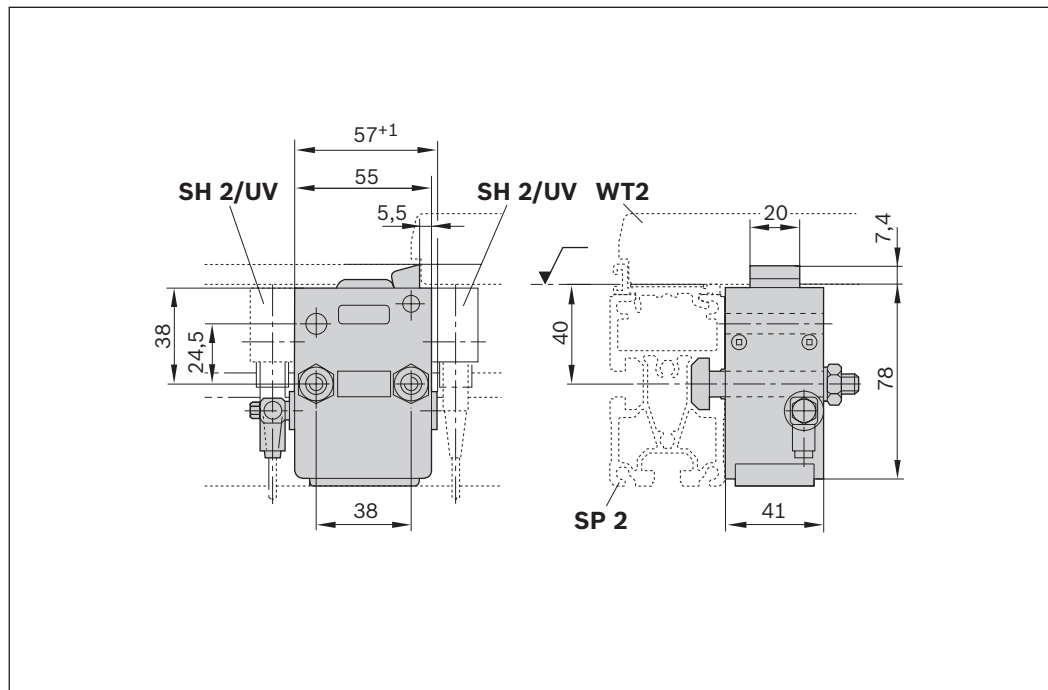
Technical data

Material number		3842530630	
Load			
Max. total workpiece pallet weight	m_G	kg	200
Features			
Material specification			Housing: PA6 Safety catch: Brass Lug cam: PA66
A-rated emission sound pressure level	L_{PA}	dB(A)	<60
Operating temperature ¹			0 ... +60
Additional information			
Required compressed air connection	p	bar	4 ... 6
Pneumatic connector	d	mm	4

¹ High-temperature stop gate on request

	Permitted total weight of workpiece pallet		Nominal speed
	m_G (kg)		v_N (m/min)
	200		6
	140		9
	100		12
	70		15
	50		18

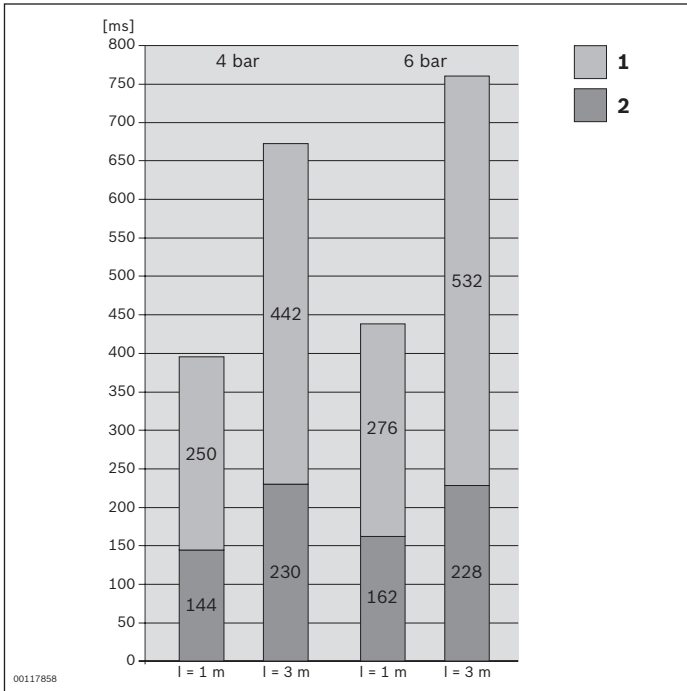
Dimensions



00116067

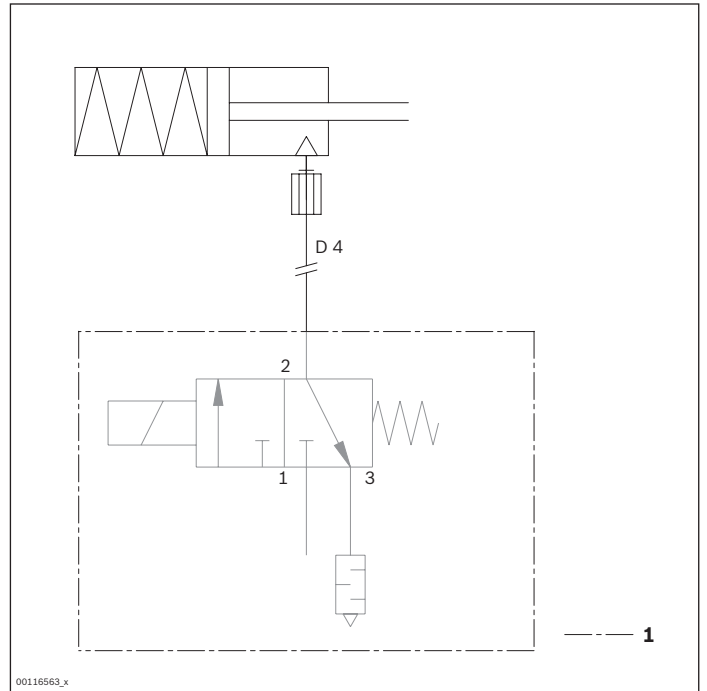
Circuit diagrams

Opening and shutting times



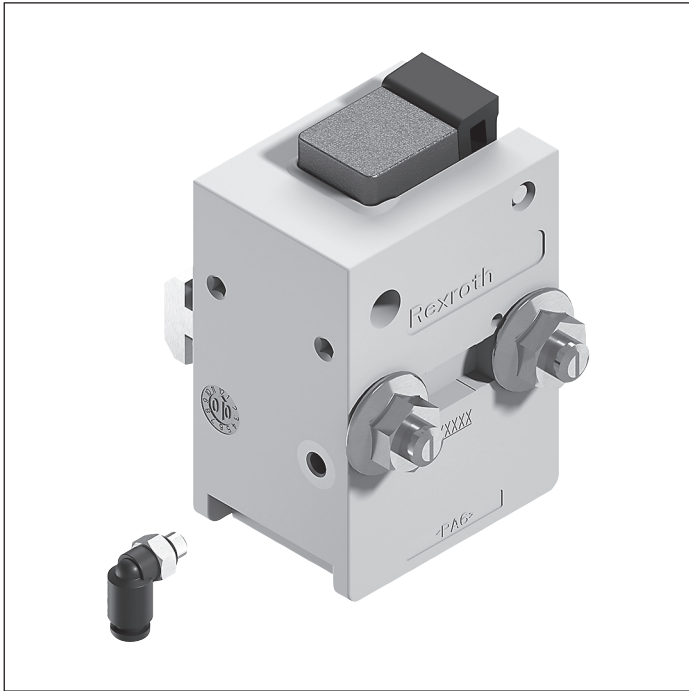
l = Hose length
1 Close
2 Open at 4 bar

Circuit diagram



1 Not included in delivery

VE 2/M stop gate



- ▶ Pneumatic stop gate
- ▶ Media resistant
- ▶ Tilting stop gate; can be opened without causing abrasion on the surface of the workpiece pallet stop surface
- ▶ Low-noise; especially quiet operation during opening and closing
- ▶ Reversible operation not permitted
- ▶ Can be combined with WT 2/E, WT 2 and WT 2/F

Stops one or more accumulating workpiece pallets at the defined stop surface of the workpiece pallet. When the pressure is released the stop gate is closed by a spring and

the workpiece pallet is stopped. Mounted inside the tracks, directly on the conveyor section.

Accessories

Recommended accessories

- ▶ VE 2/RS return stop, see p. 8-40
- ▶ SH 2 switch bracket, see p. 8-88
- ▶ Position sensor, see p. 8-18

Delivery notes

Scope of delivery

- ▶ Incl. all fastening material to mount on ST 2 conveyor section
- ▶ Pneumatic elements

Condition on delivery

- ▶ Fully assembled

Ordering information

Product designation	Material number
VE 2/M stop gate	3842531610

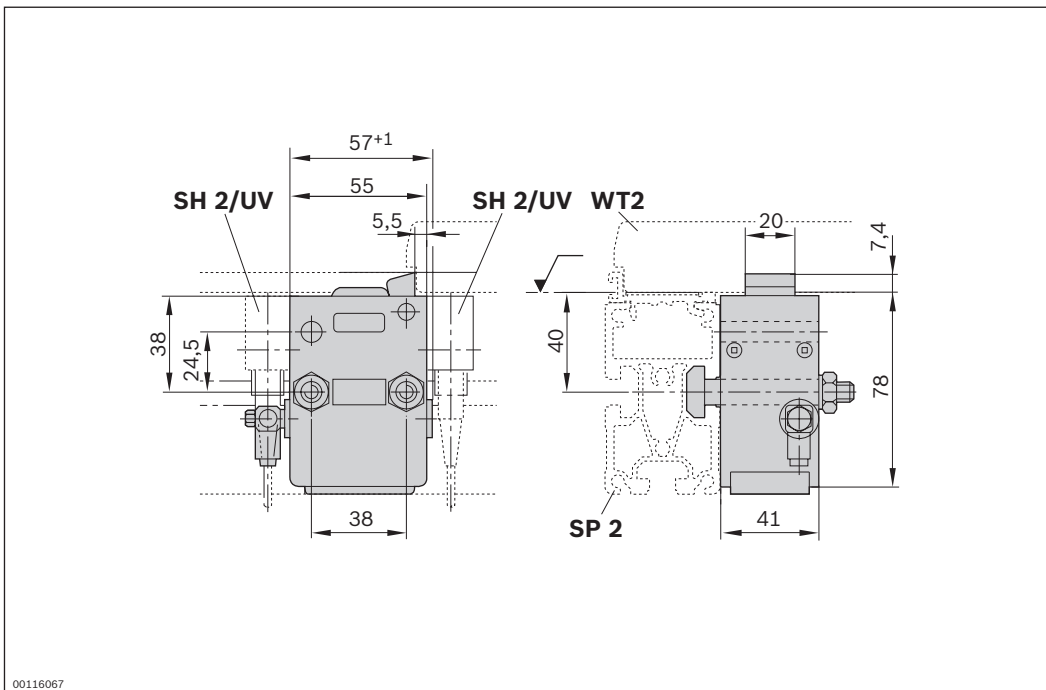
Technical data

Material number		3842531610	
Load			
Max. total workpiece pallet weight	m_G	kg	200
Features			
Material specification			Housing: PA6 Safety catch: Brass Lug cam: PA66
A-rated emission sound pressure level	L_{PA}	dB(A)	<60
Operating temperature ¹			0 ... +60
Additional information			
Required compressed air connection	p	bar	4 ... 6
Pneumatic connector	d	mm	4

¹ High-temperature stop gate on request

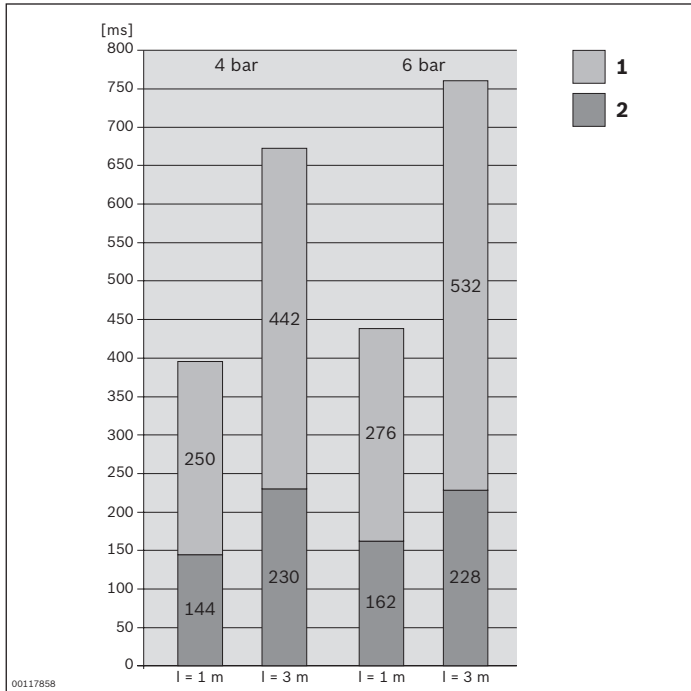
Permitted total weight of workpiece pallet m_G (kg)	Nominal speed v_N (m/min)
200	6
140	9
100	12
70	15
50	18

Dimensions



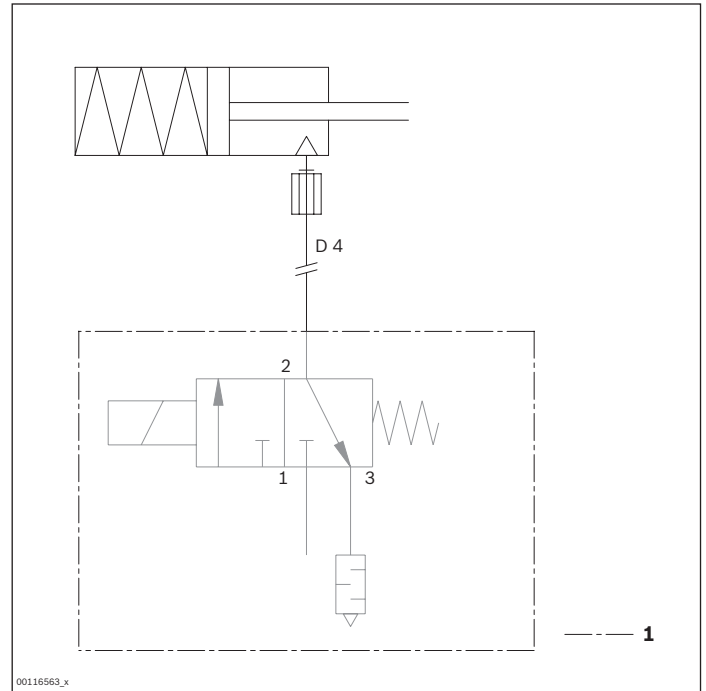
Circuit diagrams

Opening and shutting times



l = Hose length
1 Close
2 Open at 4 bar

Circuit diagram



1 Not included in delivery

VE 2/S stop gate



- ▶ Pneumatic stop gate
- ▶ Used on sections with possible reversible operation
- ▶ Pressure must not be exerted on VE 2/S by pallets traveling in reverse
- ▶ Can be combined with WT 2/E, WT 2 and WT 2/F

Note: Safe transition from both directions is possible by actively (pneumatically) opening the safety catch.

8

Stops one or more accumulating workpiece pallets at the defined stop surface of the workpiece pallet. The VE 2/S can only stop workpiece pallets coming from one direction. When the pressure is released the stop gate is closed by a spring and the workpiece pallet is stopped. Two VE 2/S

stop gates are needed to stop pallets coming from both directions, since pressure must not be exerted on the stop gate by pallets traveling in reverse. Mounted inside the tracks, directly on the conveyor section.

Accessories

Recommended accessories

- ▶ VE 2/RS return stop, see p. 8-40
- ▶ SH 2 switch bracket, see p. 8-88
- ▶ Position sensor, see p. 8-18

Delivery notes

Scope of delivery

- ▶ Incl. all fastening material to mount on ST 2 conveyor section
- ▶ Pneumatic elements

Condition on delivery

- ▶ Fully assembled

Ordering information

Product designation	Material number
VE 2/S stop gate	3842515844

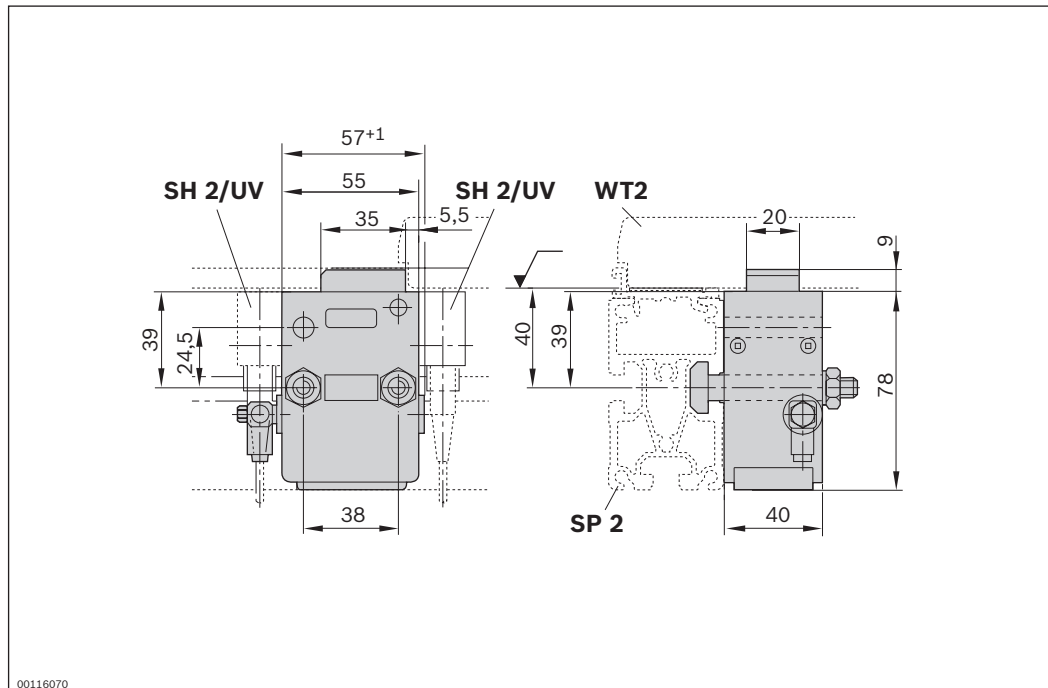
Technical data

Material number			3842515844
Load			
Max. total workpiece pallet weight	m_a	kg	140
Features			
Material specification			Housing: PA6 Lug cam: PA66
Operating temperature ¹	°C		0 ... +60
Additional information			
Required compressed air connection	p	bar	4 ... 6
Pneumatic connector	d	mm	4

¹ High-temperature stop gate on request

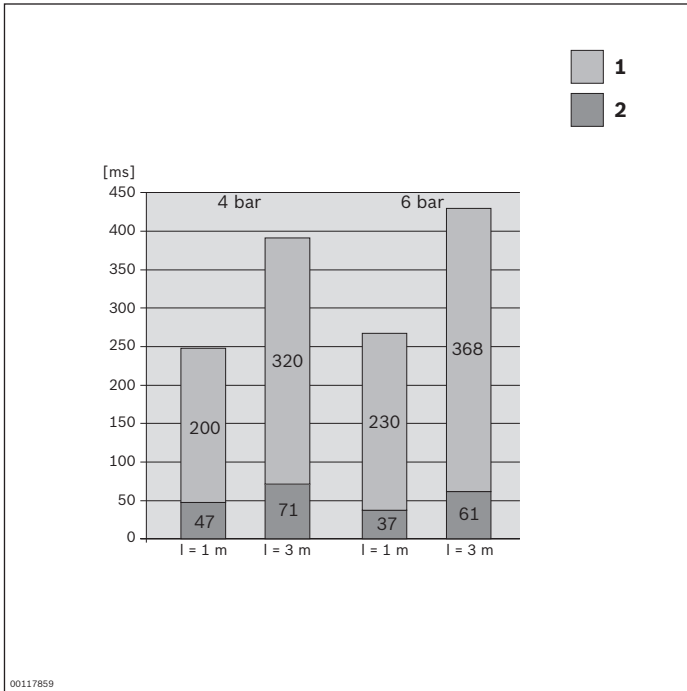
	Permitted total weight of workpiece pallet		Nominal speed
	m_a (kg)		v_N (m/min)
	140		6
	90		9
	70		12
	50		15
	30		18

Dimensions



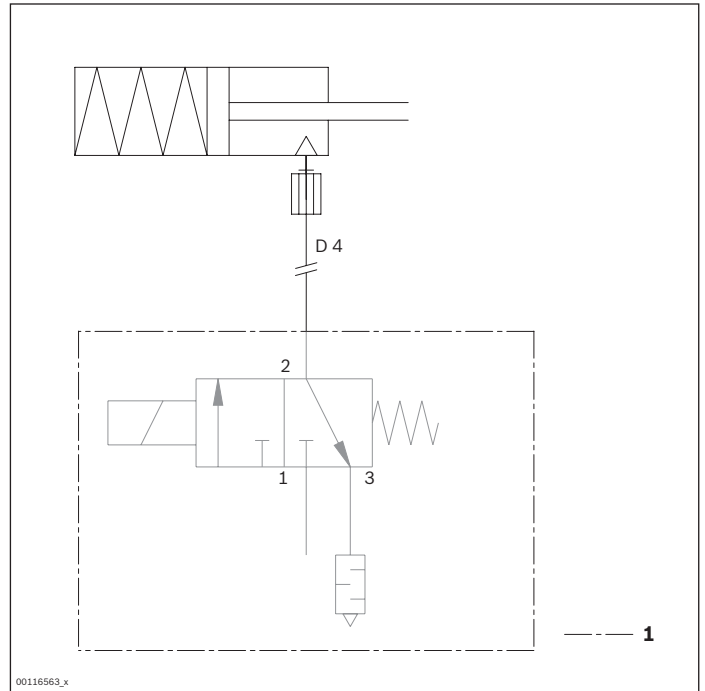
Circuit diagrams

Opening and shutting times



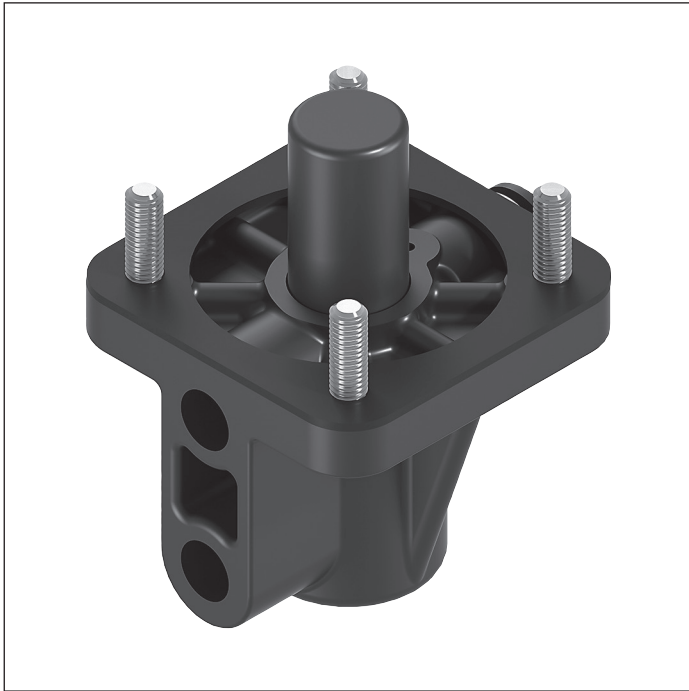
l = Hose length
1 Close
2 Open at 4 bar

Circuit diagram



1 Not included in delivery

Stop gate position sensor



- ▶ For retrofitting on the VE 2, VE 2/M, VE 2/L, or VE 2/S stop gates
- ▶ Upper and lower position sensing possible, only suitable for upper position sensing with VE 2/S
- ▶ Compressed air connection for double-action stop gate operation

The stop gate position sensor is used to detect the position of the stop gate using sensors and/or for active pneumatic

closing of the stop gate.

Accessories

Required accessories

- ▶ VE 2, VE 2/M, VE 2/L, or VE 2/S, stop gates
- ▶ 2x M8x1 sensor with rated sensing range $S_N \geq 2$ mm, can be installed flush

Delivery notes

Scope of delivery

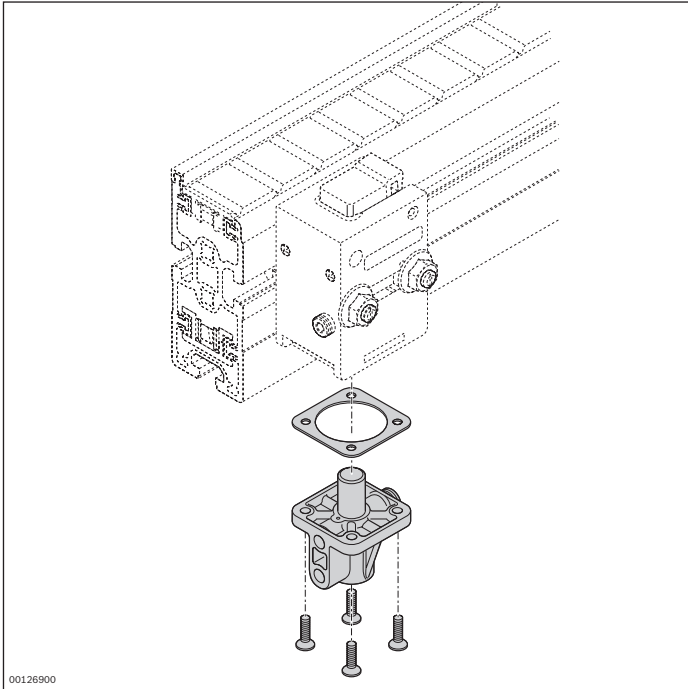
- ▶ Incl. fastening material

Ordering information

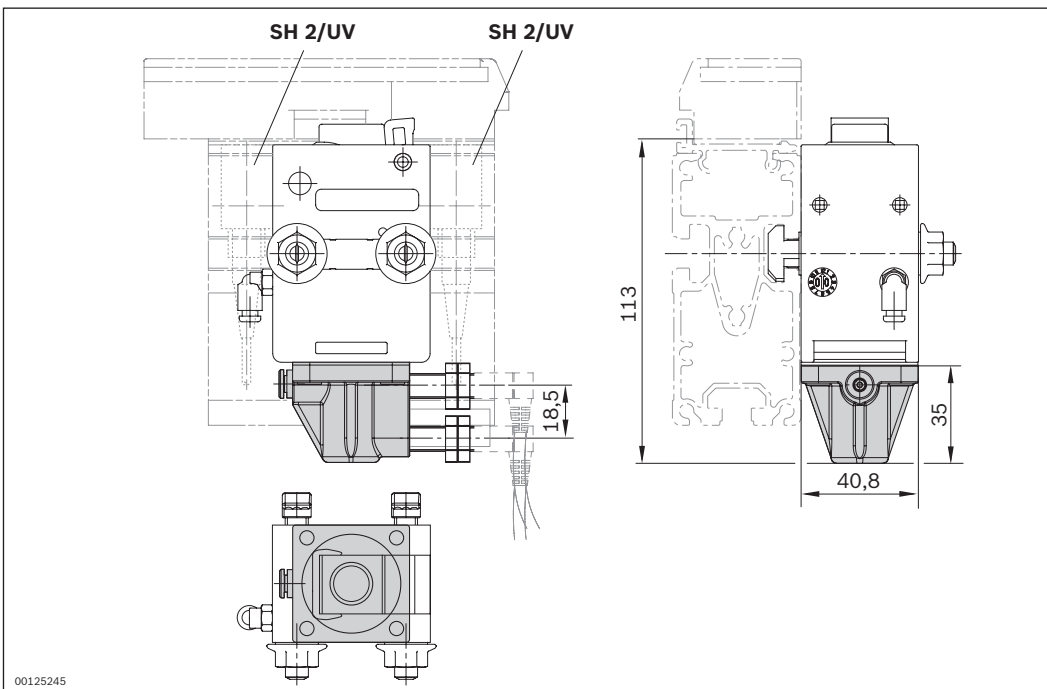
Product designation	Material number
Stop gate position sensor	3842528817

Technical data

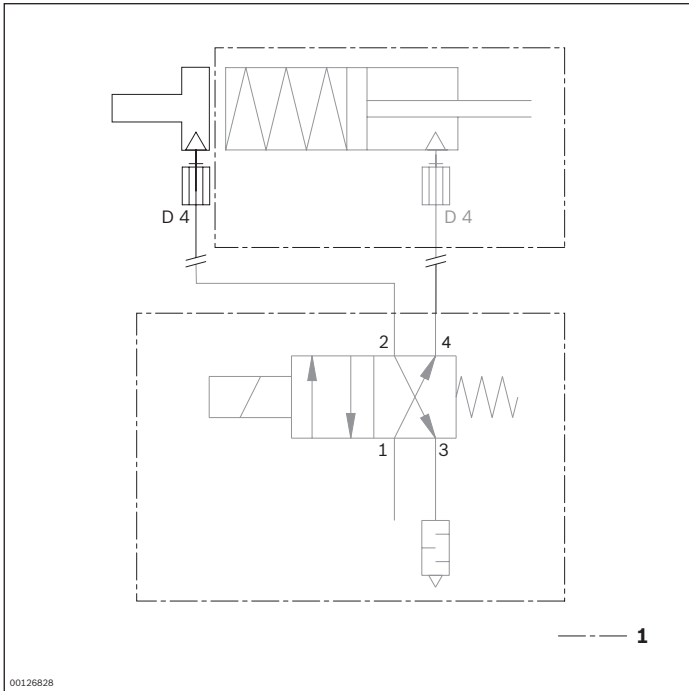
Material number	3842528817		
Features			
Material specification	PA; black Housing: PA6		
Additional information			
Required compressed air connection	p	bar	4 ... 6
Pneumatic connector	d	mm	4



Dimensions

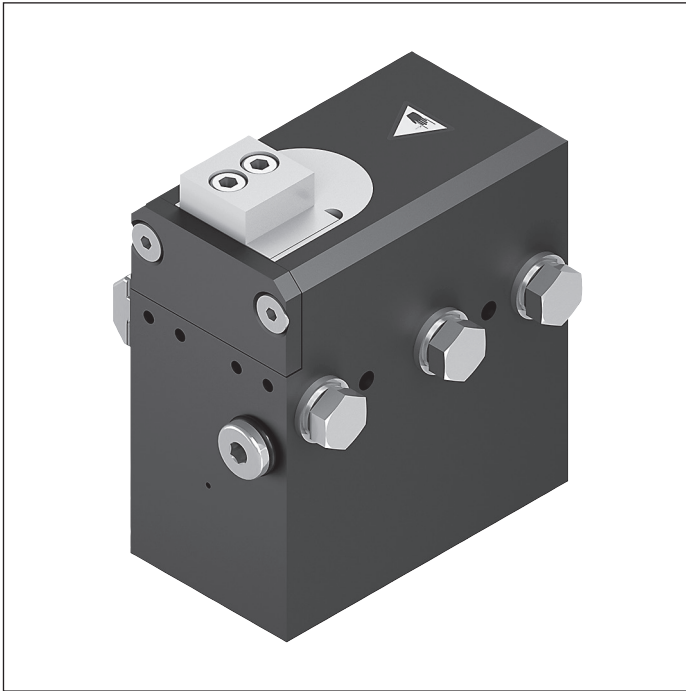


Circuit diagrams



1 Not included in delivery

VE 2/X stop gate



- ▶ Pneumatic stop gate
- ▶ For high permitted total weight of the workpiece pallet up to 450 kg
- ▶ Can be combined with WT 2 and WT 2/F

8

Stops one or more accumulating workpiece pallets at the defined stop surface of the workpiece pallet. When the pressure is released the stop gate is closed by a spring and

the workpiece pallet is stopped. Mounted inside the tracks, directly on the conveyor section.

Accessories

Recommended accessories

- ▶ VE 2/RS return stop, see p. 8-40
- ▶ SH 2 switch bracket, see p. 8-88

Delivery notes

Scope of delivery

- ▶ Incl. all fastening material to mount on ST 2 conveyor section

Condition on delivery

- ▶ Fully assembled

Ordering information

Product designation	Material number
VE 2/X stop gate	3842547770

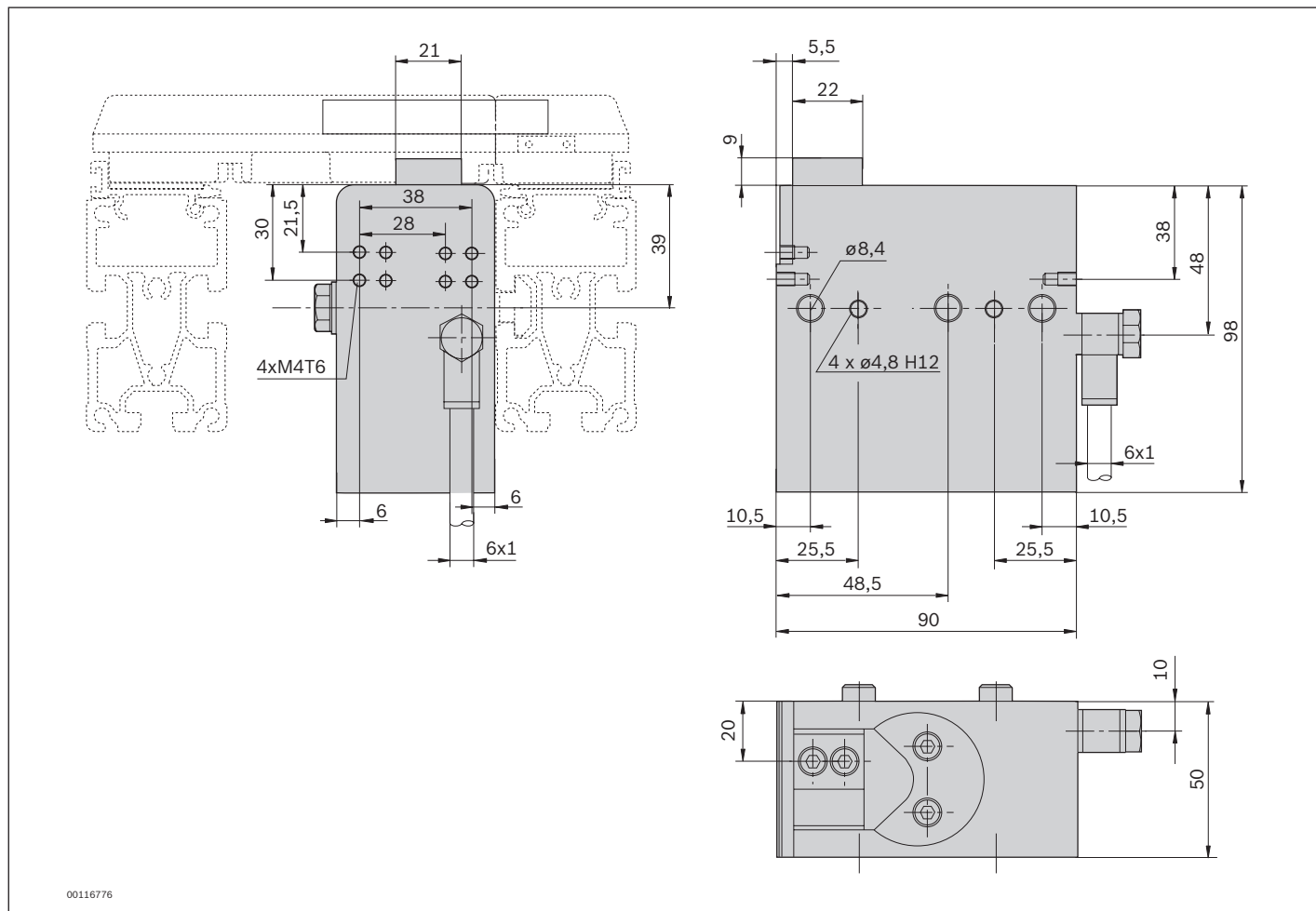
Technical data

Material number		3842547770	
Load			
Max. total workpiece pallet weight	m_G	kg	450
Features			
Material specification		Housing: aluminum, hard anodized Lug cam: Steel, hardened	
Operating temperature ¹		°C	0 ... +60
Additional information			
Required compressed air connection	p	bar	4 ... 6
Pneumatic connector	d	mm	6

¹ High-temperature stop gate on request

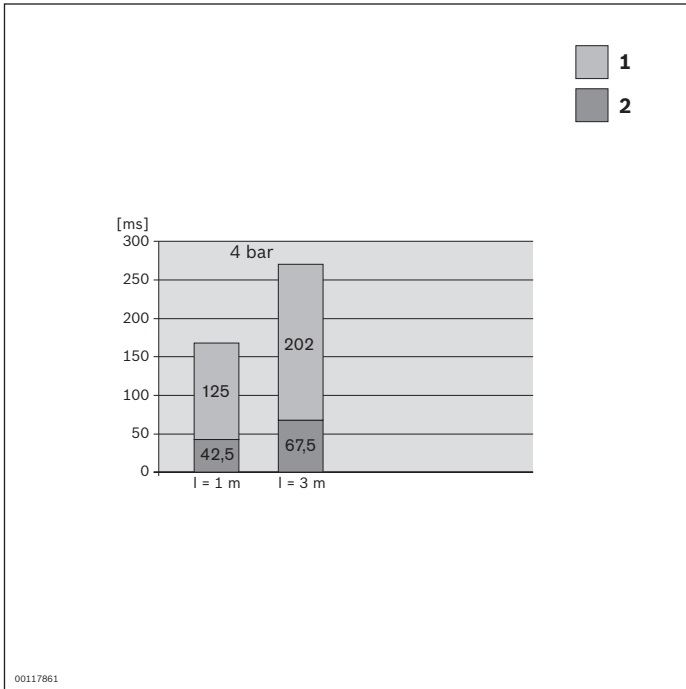
	Permitted total weight of workpiece pallet		Nominal speed
	m_G (kg)		v_N (m/min)
	450		6
	300		9
	220		12
	140		15
	100		18

Dimensions



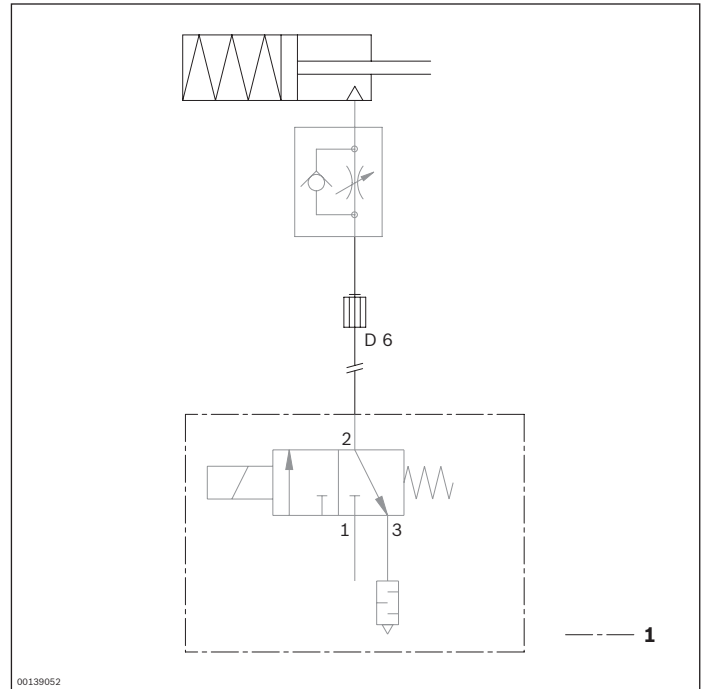
Circuit diagrams

Opening and shutting times



l = Hose length
1 Close
2 Open at 4 bar

Circuit diagram



1 Not included in delivery