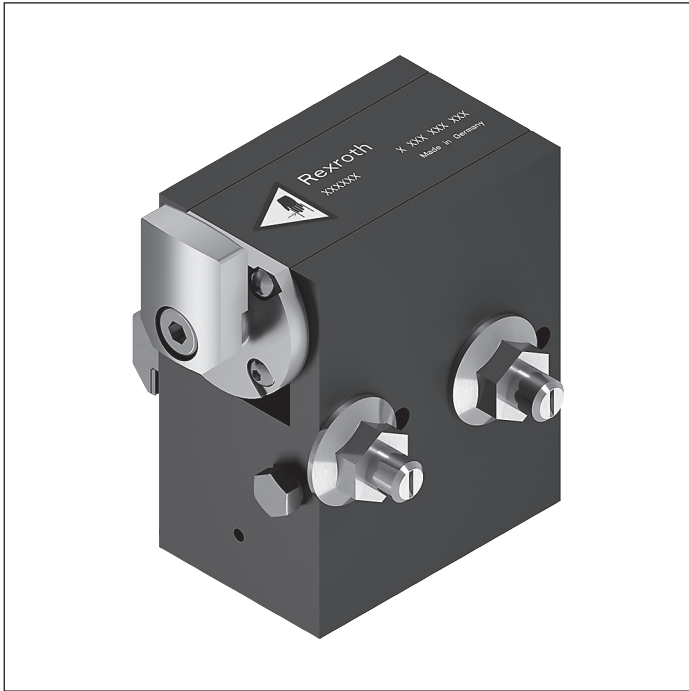


VE 2/D-60 stop gate



- ▶ Pneumatic stop gate
- ▶ Optimal damping for workpiece pallet total weights up to 60 kg
- ▶ Continuously adjustable damping
- ▶ Can be combined with WT 2/E, WT 2 and WT 2/F

Dampened stopping of the first accumulating workpiece pallet. The stop gate stops one or more accumulating workpiece pallets at the defined stop surface of the workpiece pallet. When the pressure is released the stop

gate is closed by a spring and the workpiece pallet is stopped. Mounted inside the tracks, directly on the conveyor section.

Accessories

Recommended accessories

- ▶ VE 2/RS return stop, see p. 8-40

Delivery notes

Scope of delivery

- ▶ Incl. all fastening material to mount on ST 2 conveyor section

Condition on delivery

- ▶ Fully assembled

Ordering information

Product designation	Material number
VE 2/D-60 stop gate	3842547785

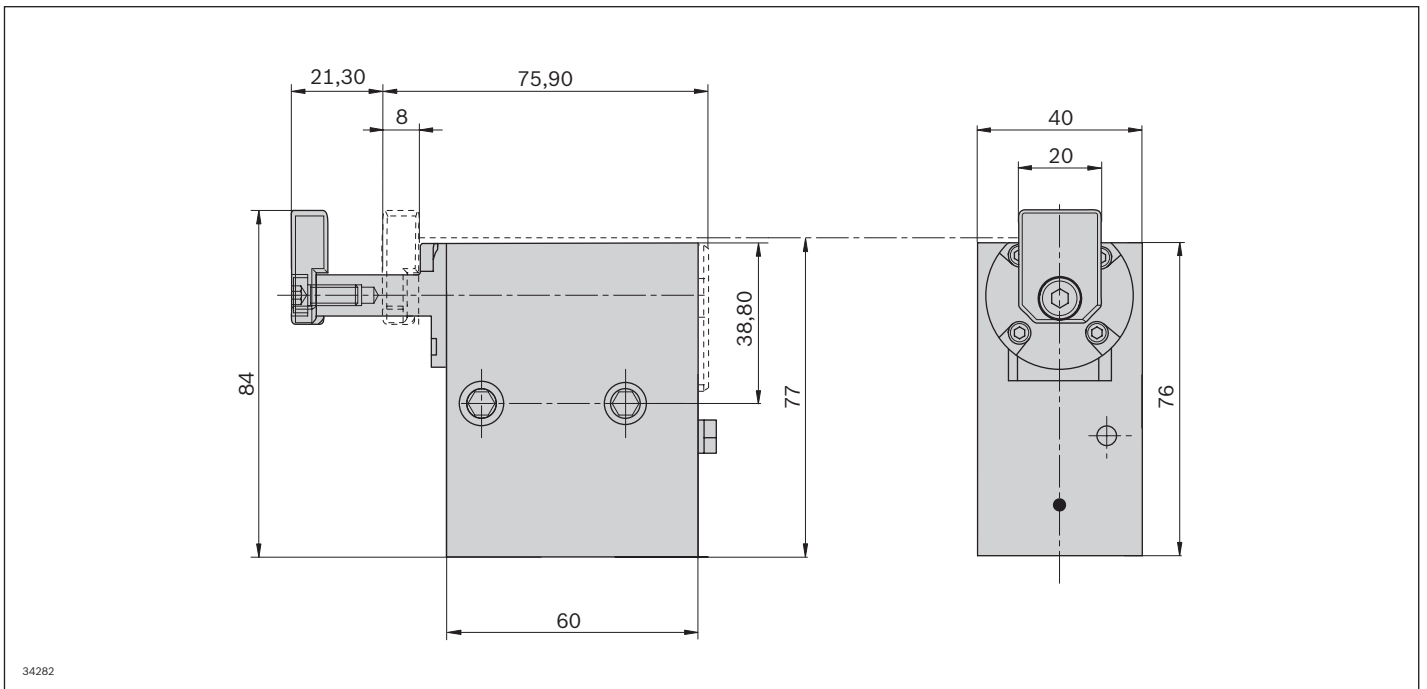
Technical data

Material number		3842547785	
Load			
Max. total workpiece pallet weight	m_G	kg	60
Min. workpiece pallet weight	m	kg	1
Features			
Material specification		Housing: Aluminum, hard anodized Lug cam: Steel, hardened	
Operating temperature ¹		°C	0 ... +60
Additional information			
Required compressed air connection	p	bar	4 ... 6
Pneumatic connector	d	mm	4

¹ High-temperature stop gate on request

Permitted total weight of workpiece pallet m_G (kg)	Nominal speed v_N (m/min)
60	6
40	9
35	12
30	15
30	18
24	24

Dimensions

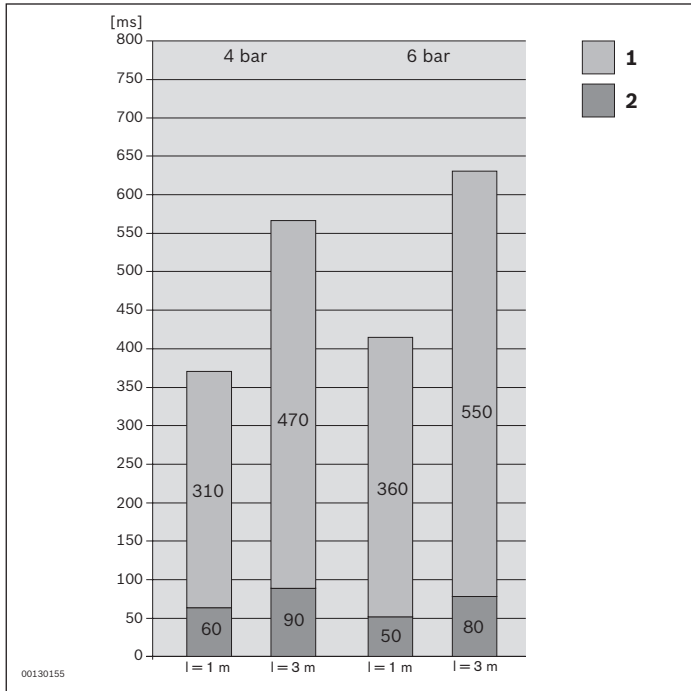


34282

* Stroke

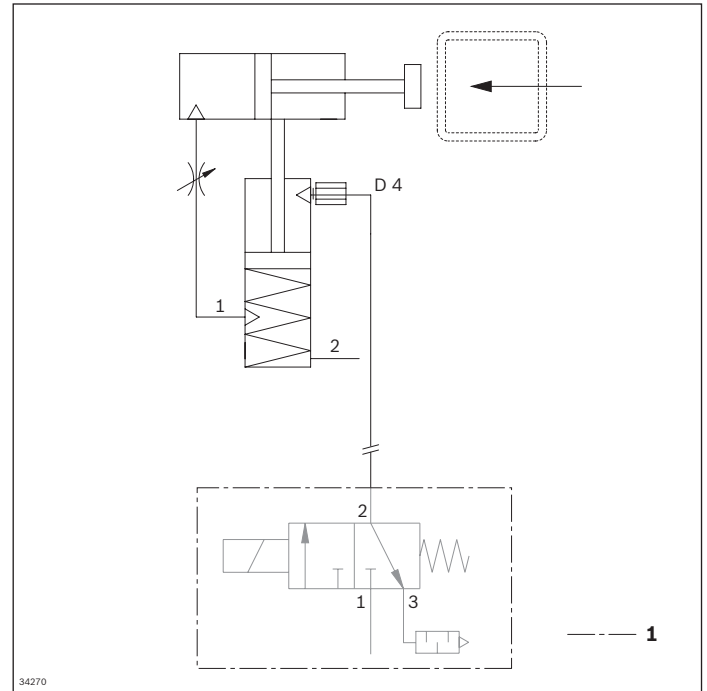
Circuit diagrams

Opening and shutting times



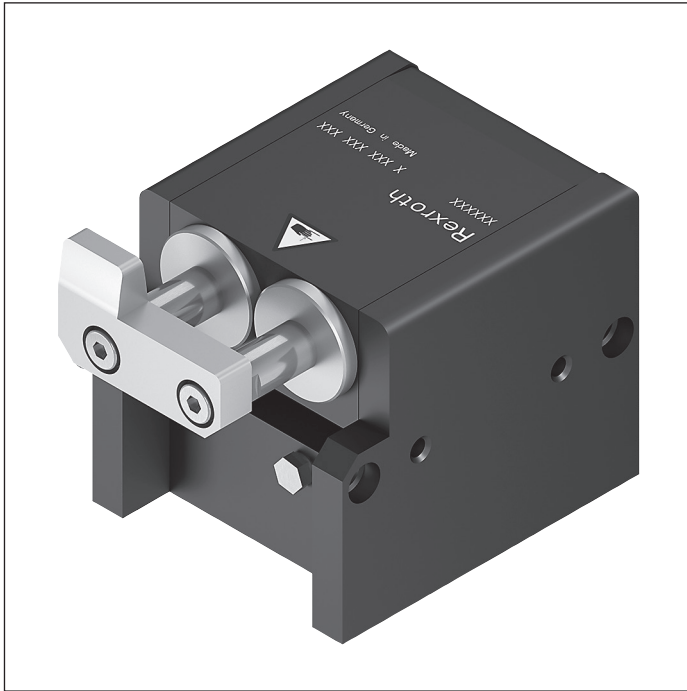
l = Hose length
1 Close
2 Open at 4 bar

Circuit diagram



1 Not included in delivery

VE 2/D-175 stop gate



- ▶ Pneumatic stop gate
- ▶ Especially sturdy all-metal design with double piston damper
- ▶ Continuously adjustable damping
- ▶ Short damping path of 20 mm
- ▶ Short damping time
- ▶ Short installation dimension
- ▶ Can be combined with WT 2 and WT 2/F

8

Dampened stopping of the first accumulating workpiece pallet. The stop gate stops one or more accumulating workpiece pallets at the defined stop surface of the workpiece pallet. When the pressure is released the stop

gate is closed by a spring and the workpiece pallet is stopped. Mounted inside the tracks, directly on the conveyor section.

Accessories

Recommended accessories

- ▶ VE 2/RS return stop, see p. 8-40

Delivery notes

Scope of delivery

- ▶ Incl. all fastening material to mount on ST 2 conveyor section

Condition on delivery

- ▶ Fully assembled

Ordering information

Product designation	Material number
VE 2/D-175 stop gate	3842558795

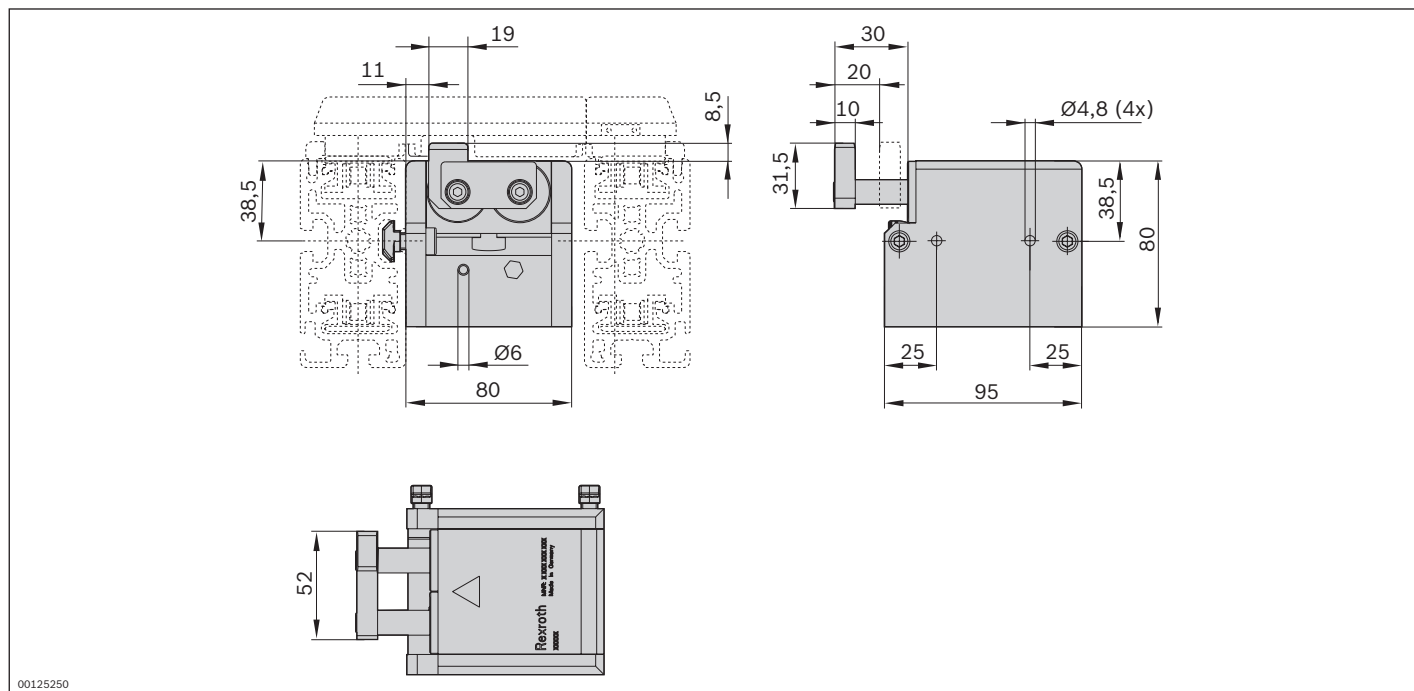
Technical data

Material number			3842558795
Load			
Max. total workpiece pallet weight	m_G	kg	175
Min. workpiece pallet weight	m	kg	5
Features			
Material specification			Housing: Aluminum; hard anodized Lug cam: Steel, hardened
Operating temperature ¹			°C 0 ... +60
Additional information			
Required compressed air connection	p	bar	4 ... 6
Pneumatic connector	d	mm	6

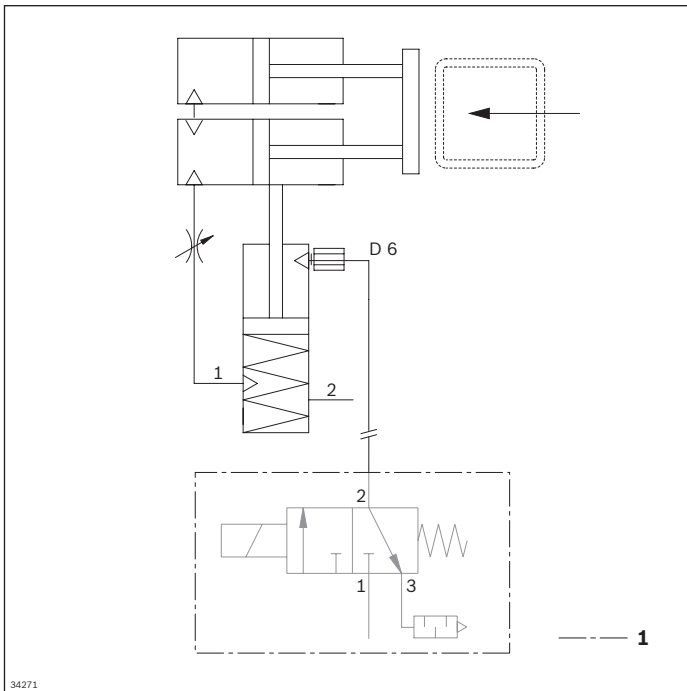
¹ High-temperature stop gate on request

Permitted total weight of workpiece pallet m_G (kg)	Nominal speed v_N (m/min)
175	6
160	9
145	12
110	15
90	18
50	24
35	30

Dimensions

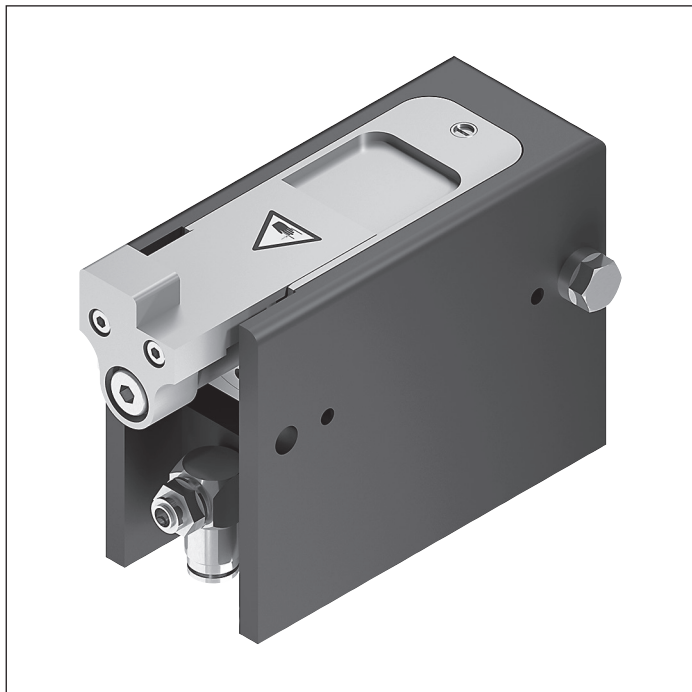


Circuit diagram



1 Not included in delivery

VE 2/D-200 stop gate



- ▶ Pneumatic stop gate
- ▶ Continuously adjustable damping
- ▶ Optimal damping for workpiece pallet total weights between 50 kg and 200 kg
- ▶ Can be combined with WT 2 and WT 2/F

Dampened stopping of the first accumulating workpiece pallet. Stops one or more accumulating workpiece pallets at the defined stop surface of the workpiece pallet. When the pressure is released the stop gate is closed by a spring

and the workpiece pallet is stopped. Mounted inside the tracks, directly on the conveyor section.

Accessories

Recommended accessories

- ▶ VE 2/RS return stop, see p. 8-40

Delivery notes

Scope of delivery

- ▶ Incl. all fastening material to mount on ST 2 conveyor section

Condition on delivery

- ▶ Fully assembled

Ordering information

Product designation	Material number
VE 2/D-200 stop gate	3842524895

Technical data

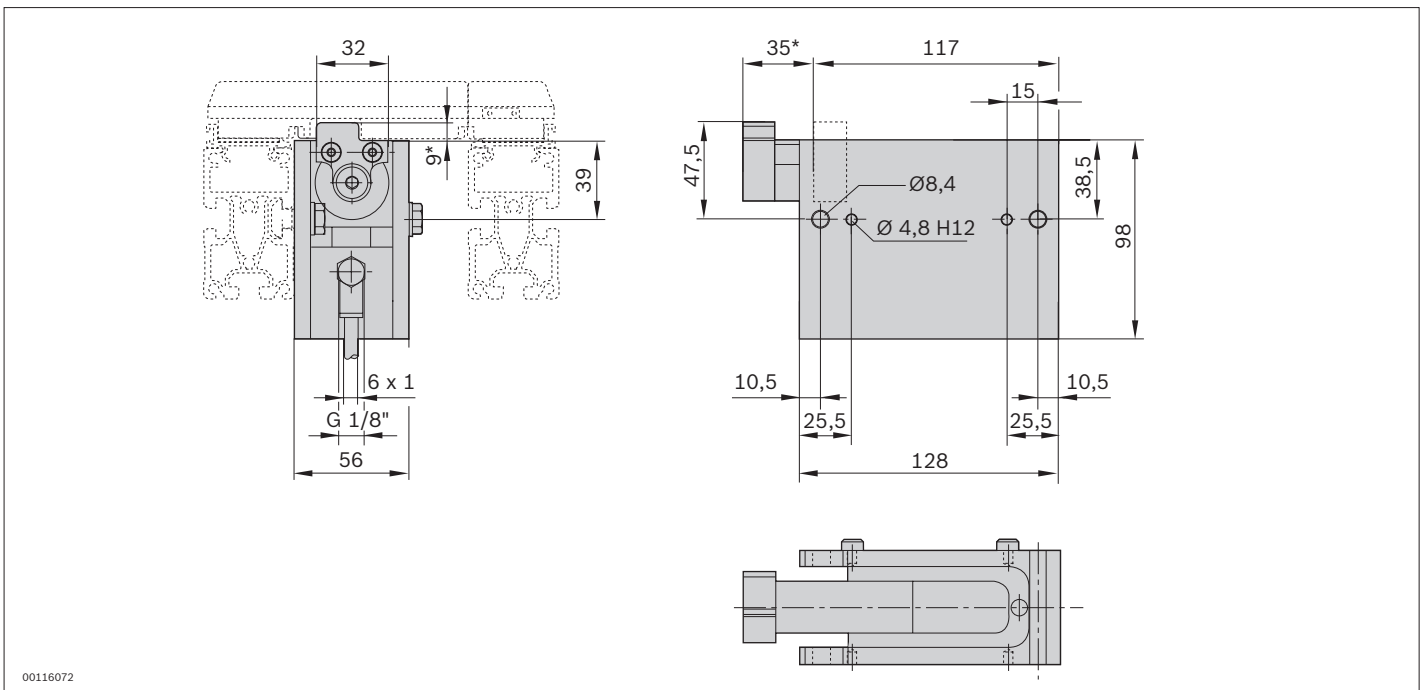
Material number		3842524895	
Load			
Max. total workpiece pallet weight	m_G	kg	200
Min. workpiece pallet weight	m	kg	5
Features			
Material specification		Housing: Aluminum, hard anodized Lug cam: Steel, hardened	
Operating temperature ¹		°C	0 ... +60
Additional information			
Required compressed air connection	p	bar	4 ... 6
Pneumatic connector	d	mm	6

¹ High-temperature stop gate on request

Permitted total weight of workpiece pallet m_G (kg)	Nominal speed v_N (m/min)
200	6
140	9
100	12
100	15
100	18
55	24
35	30

8

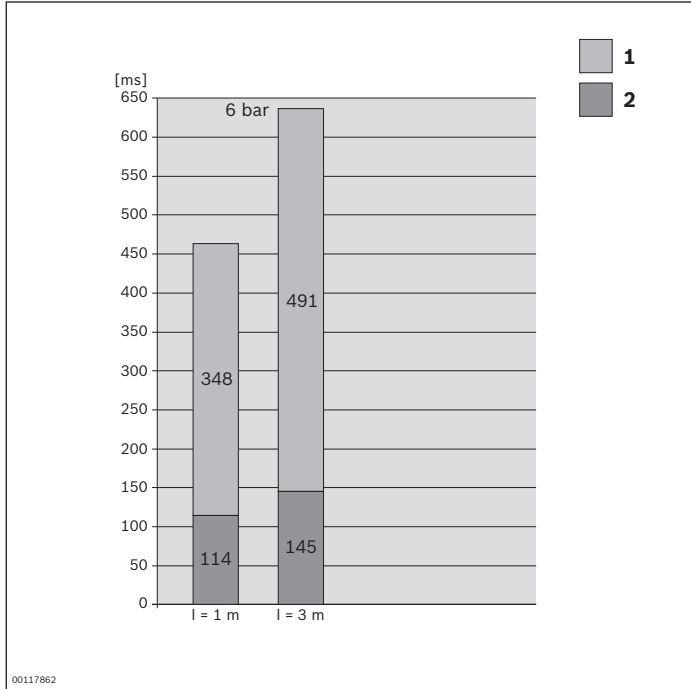
Dimensions



* Stroke

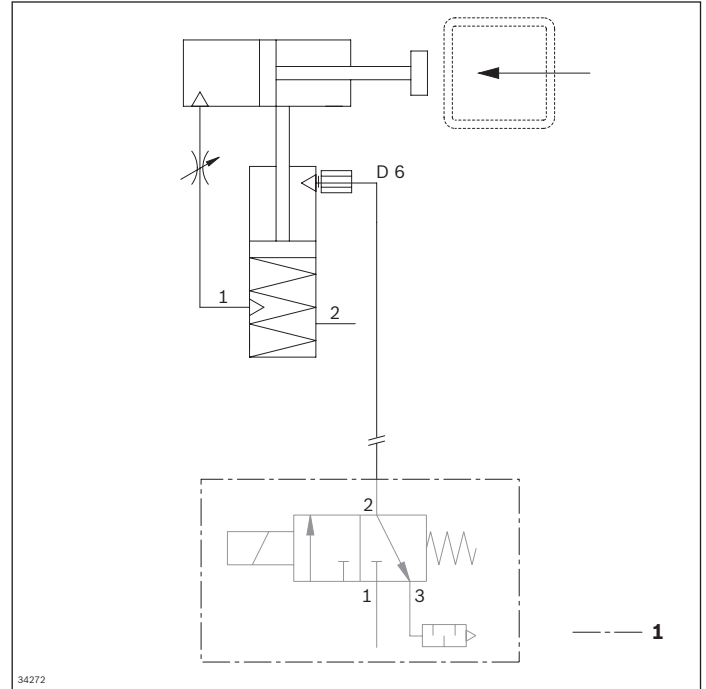
Circuit diagrams

Opening and shutting times



l = Hose length
 1 Close
 2 Open at 4 bar

Circuit diagram



1 Not included in delivery



VE 2/D100-H stop gate



- ▶ Pneumatic stop gate
- ▶ For central separation of the WT 2/H and WT 2/F-H workpiece pallets
- ▶ Suitable for accumulation loads up to 1000 kg
- ▶ Continuously adjustable damping
- ▶ Optimal damping for workpiece pallet total weights up to 100 kg
- ▶ Can be combined with WT 2/H and WT 2/F-H

8

Dampened stopping of the first accumulating workpiece pallet. The stop gate stops one or more accumulating workpiece pallets at the defined stop surface of the workpiece pallet. For central separation, the stop gate is mounted inside the tracks on the conveyor section using

the supplied cross connectors. When the pressure is released the stop gate is closed by a spring and the workpiece pallet is stopped.

Accessories

Recommended accessories

- ▶ VE 2/RS-H return stop, see p. 8-42

Delivery notes

Scope of delivery

- ▶ Incl. all fastening material to mount on ST 2 conveyor sections

Condition on delivery

- ▶ Not assembled

Ordering information

Material number		3842998747
b (mm)	Track width	400; 480; 640; 800; 1040; 1200
b (mm)	Track width	400 ... 1200 ¹⁾

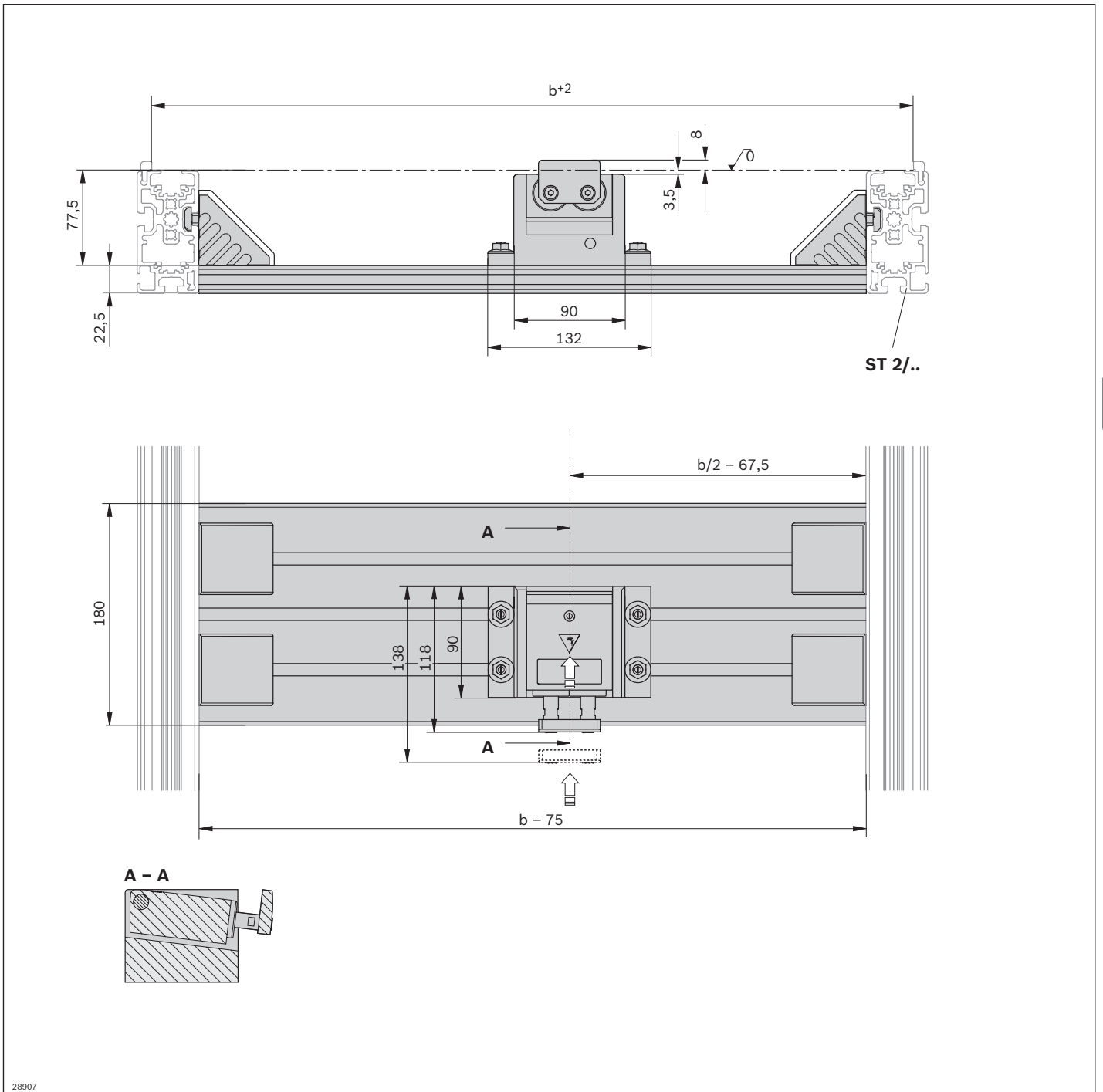
¹⁾ Individual width variants possible

Technical data

Material number		3842998747	
Load			
Max. total workpiece pallet weight	m _G	kg	100
Min. workpiece pallet weight	m	kg	5
Features			
Material specification			Housing: Steel Lug cam: Steel Cross strut: Aluminum
Operating temperature ¹		°C	0 ... +60

¹ High-temperature stop gate on request

Dimensions

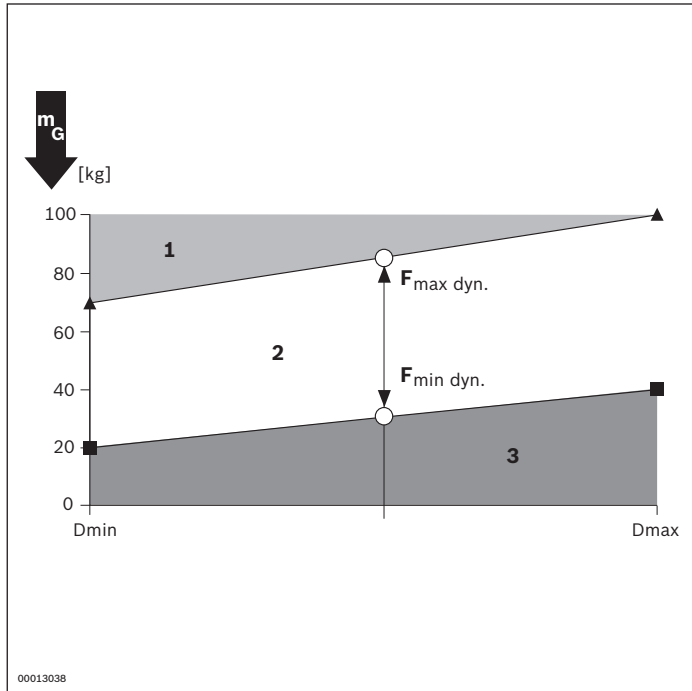


28907

0 Transport level

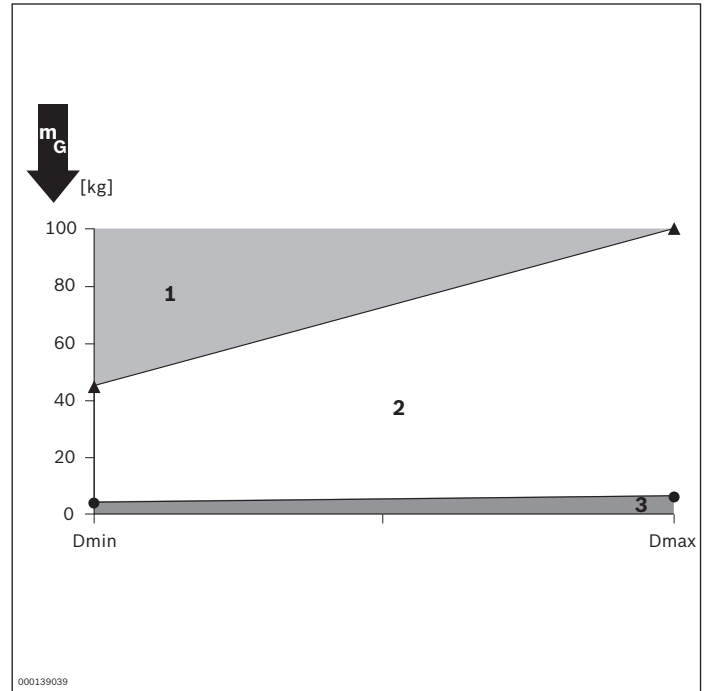
Characteristic curve diagram

Damping setting, accumulation roller chain $\mu = 0.02$



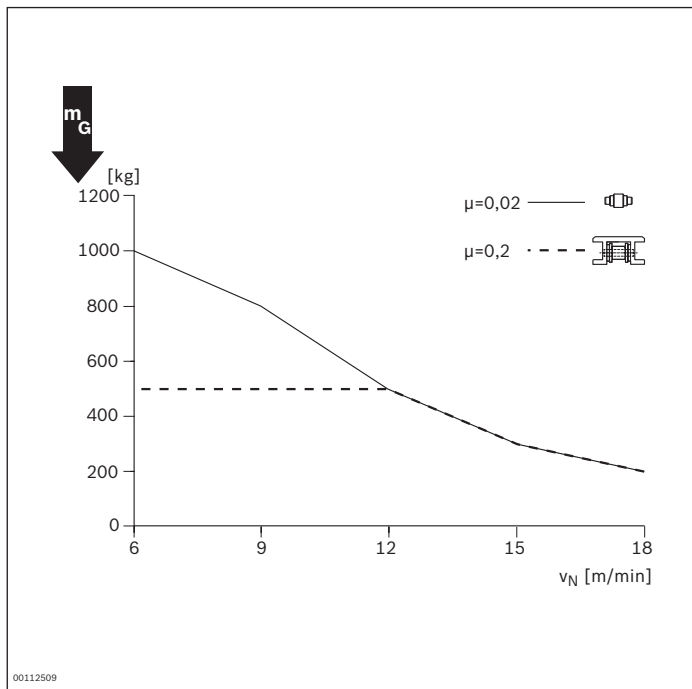
- 1 Damping effect limited, use of a VE 2/RS-H return stop recommended
 - 2 Recommended range
 - 3 Not possible
- Dmax/min damping setting

Damping setting, flat top chain $\mu = 0.2$

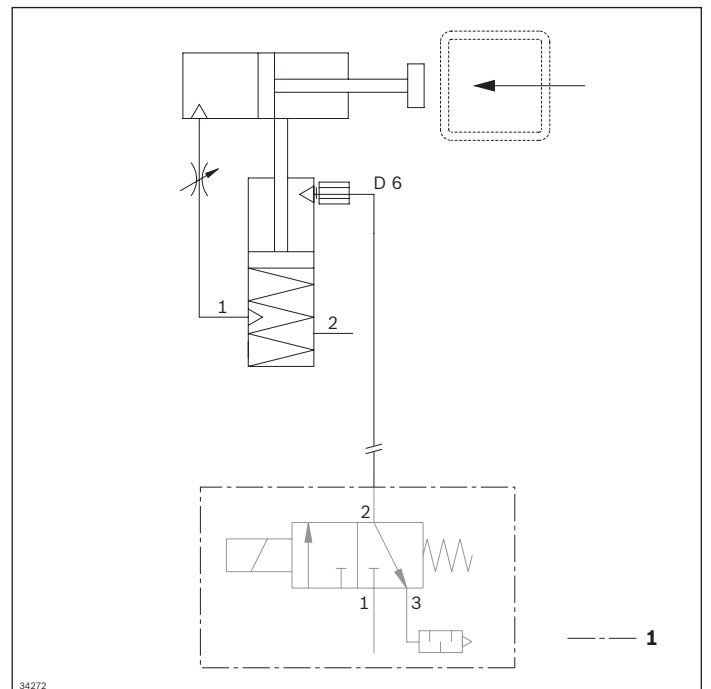


- 1 Damping effect limited, use of a VE 2/RS-H return stop recommended
 - 2 Recommended range
 - 3 Not possible
- Dmax/min damping setting

Max. permitted section load

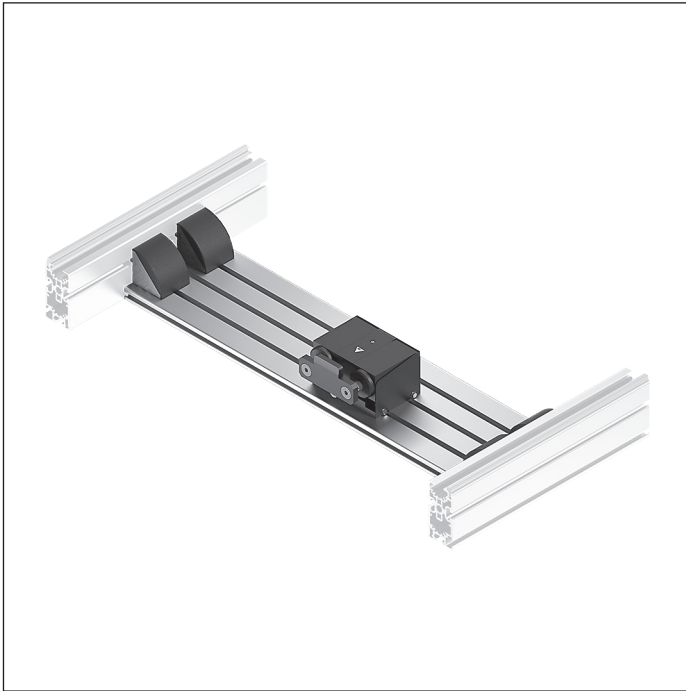


Circuit diagram





VE 2/D250-H stop gate



- ▶ Pneumatic stop gate
- ▶ For central separation of the WT 2/H and WT 2/F-H workpiece pallets
- ▶ Suitable for accumulation loads up to 2250 kg
- ▶ Continuously adjustable damping
- ▶ Optimal damping for total weights up to 250 kg
- ▶ Can be combined with WT 2/H and WT 2/F-H

8

Dampened stopping of the first accumulating workpiece pallet. The stop gate stops one or more accumulating workpiece pallets at the defined stop surface of the workpiece pallet. For central separation, the stop gate is mounted inside the tracks on the conveyor section using

the supplied cross connectors. When the pressure is released the stop gate is closed by a spring and the workpiece pallet is stopped.

Accessories

Recommended accessories

- ▶ VE 2/RS-H return stop, see p. 8-42

Delivery notes

Scope of delivery

- ▶ Incl. all fastening material to mount on ST 2 conveyor sections

Condition on delivery

- ▶ Not assembled

Ordering information

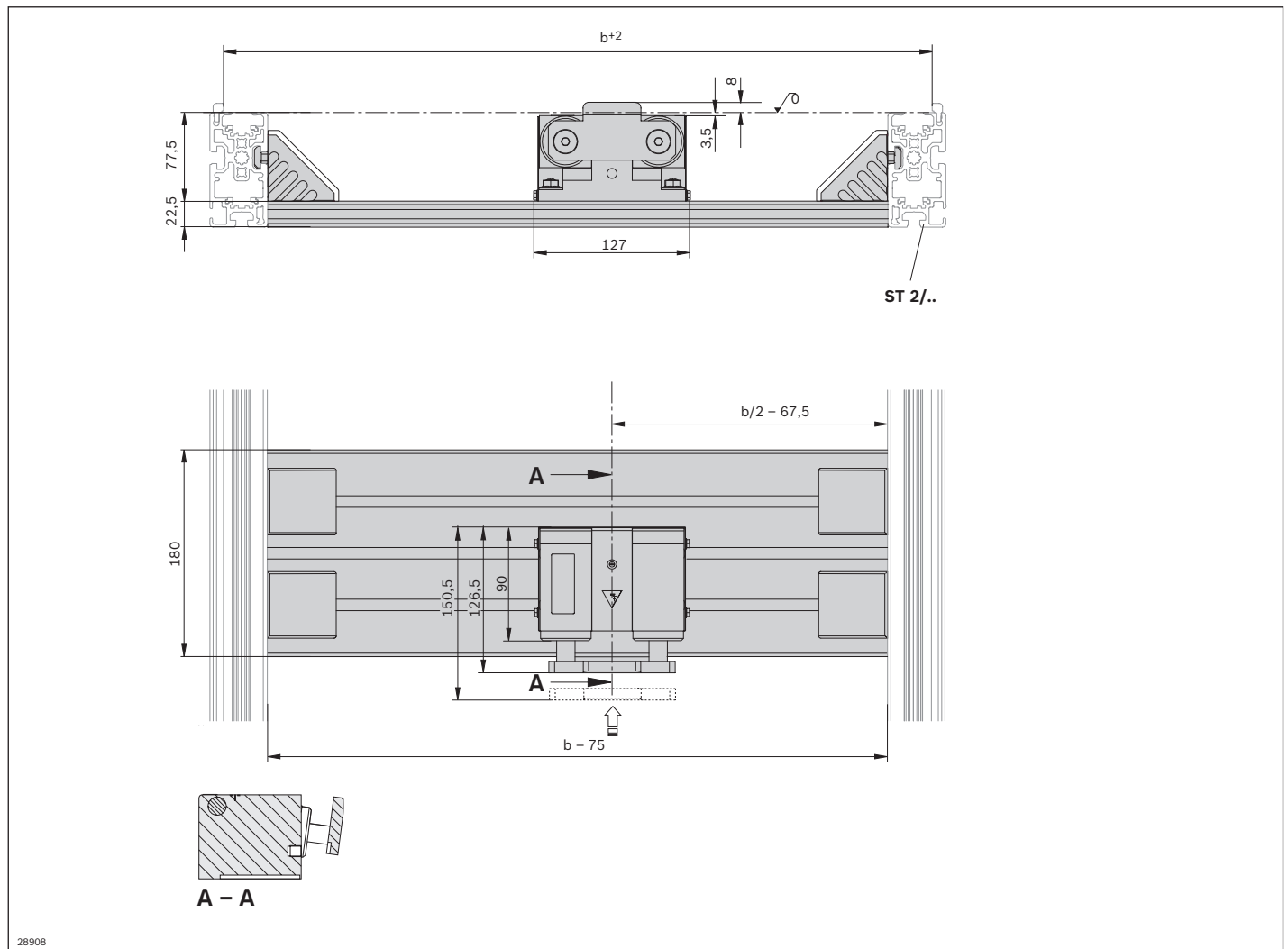
Material number		3842998748
b (mm)	Track width	400; 480; 640; 800; 1040; 1200
b (mm)	Track width	400 ... 1200 ¹⁾

¹⁾ Individual width variants possible

Technical data

Material number	3842998748		
Load			
Max. total workpiece pallet weight	m_G	kg	250
Min. workpiece pallet weight	m	kg	5
Features			
Material specification	Housing: Steel; coated Lug cam: Steel; coated Cross strut: Aluminum, natural; anodized		
Operating temperature ¹		°C	0 ... +60
¹ High-temperature stop gate on request			

Dimensions

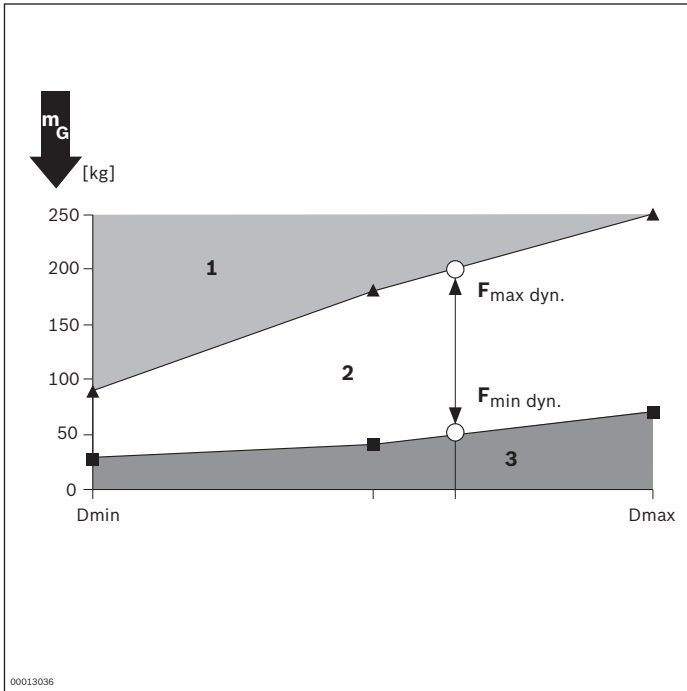


28908

0 Transport level

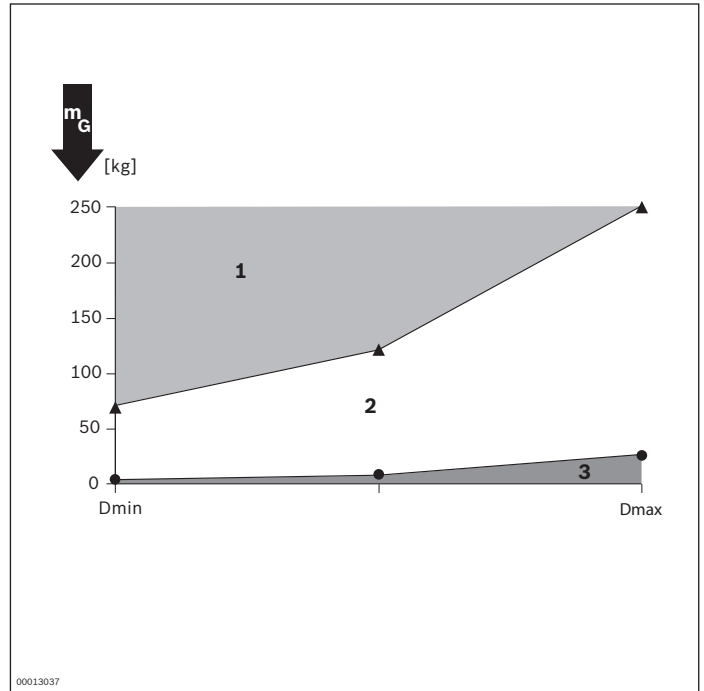
Characteristic curve diagram

Damping setting, accumulation roller chain $\mu = 0.02$



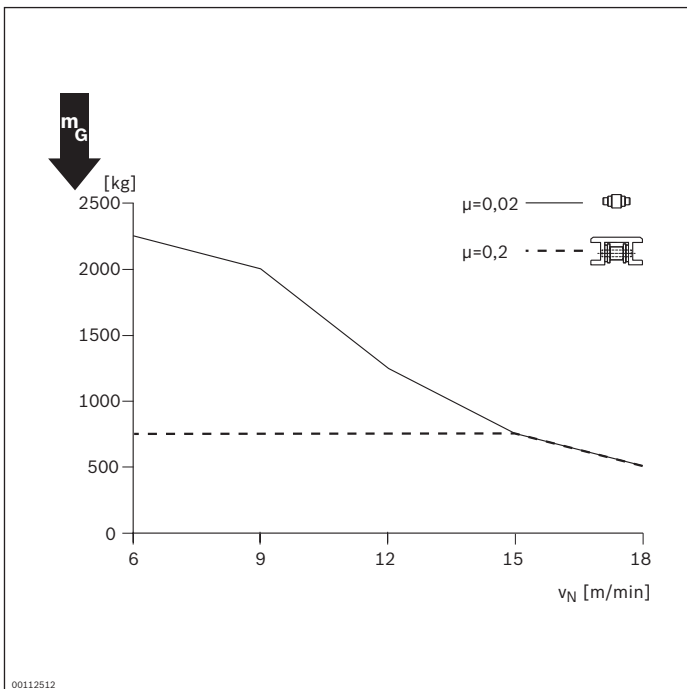
- 1 Damping effect limited, use of a VE 2/RS-H return stop recommended
 - 2 Recommended range
 - 3 Not possible
- Dmax/min damping setting

Damping setting, flat top chain $\mu = 0.2$

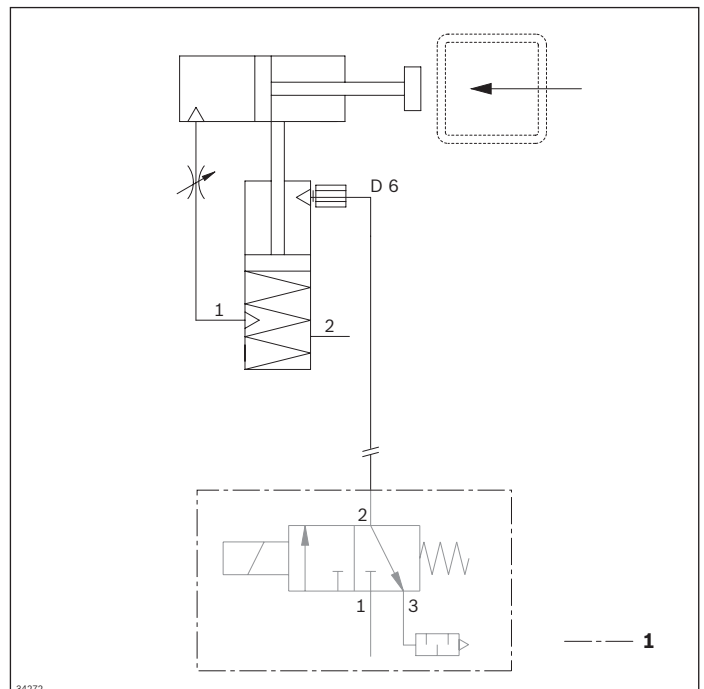


- 1 Damping effect limited, use of a VE 2/RS-H return stop recommended
 - 2 Recommended range
 - 3 Not possible
- Dmax/min damping setting

Max. permitted section load



Circuit diagram



VE 2/RS return stop



- ▶ Spring-loaded safety catch
- ▶ Can be used on the left or right
- ▶ Use for one direction of transport, reversible operation not permitted
- ▶ Can be combined with WT 2/E, WT 2, WT 2/F, WT 2/H and WT 2/F-H

Note: The VE 2/RS return stop can only be installed outside the workpiece pallet surface on the WT2/H and WT 2/F-H.

The return stop prevents the rebound impact of the workpiece pallet from the stop gate. The use of the VE 2/RS return stop is especially recommended when the accumulation roller chain is used as conveyor medium in connection with undamped stop gates. In normal condition

the stop gate is moved into the lock position by a spring and the workpiece pallet overtravels the VE 2/RS in the direction of transport and is stopped against the transport direction. Mounted inside the tracks, directly on the conveyor section.

Delivery notes

Scope of delivery

- ▶ Incl. all fastening material to mount on ST 2 conveyor section

Condition on delivery

- ▶ Fully assembled

Ordering information

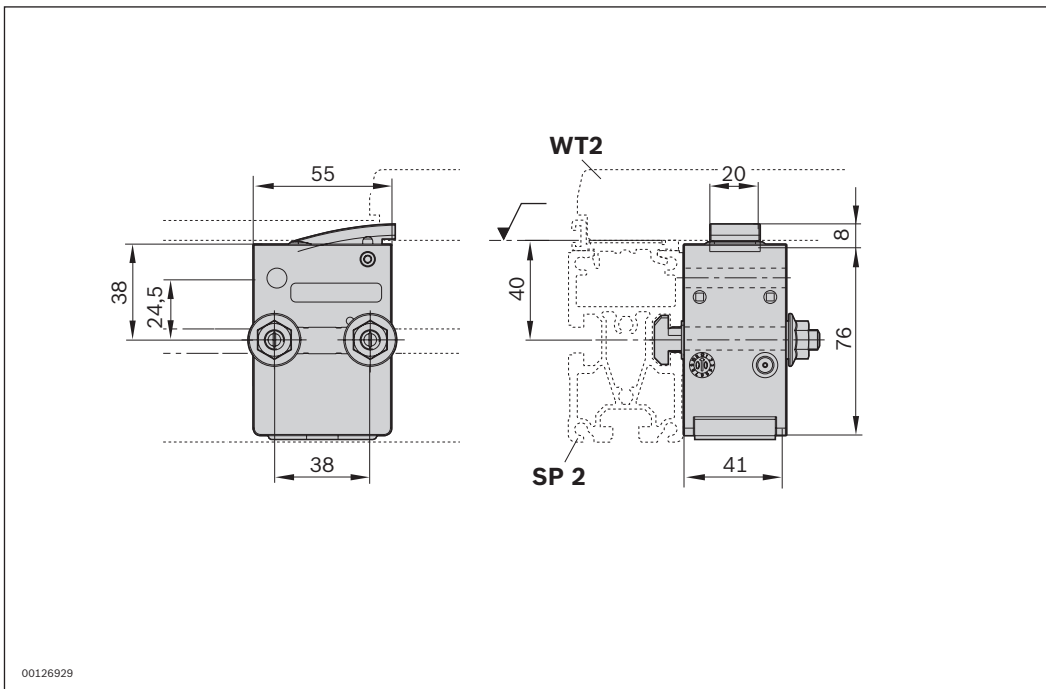
Product designation	Material number
VE 2/RS return stop	3842531696

Technical data

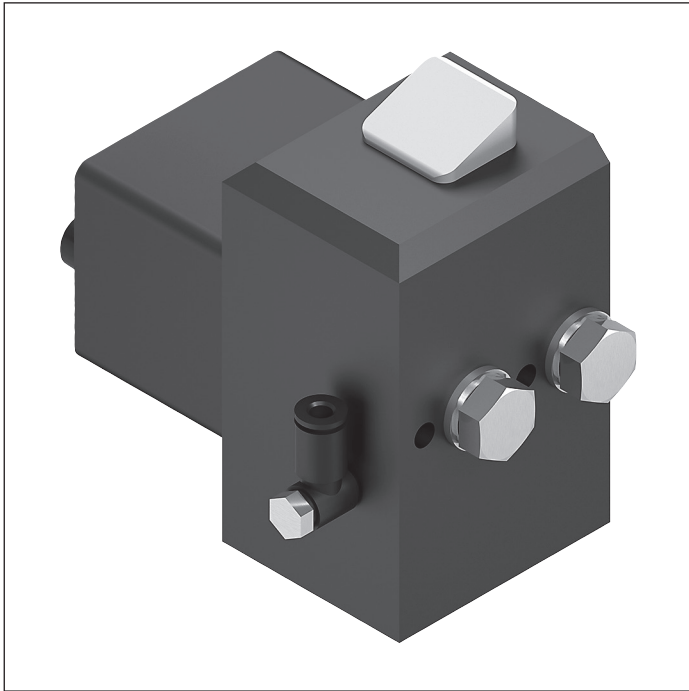
Material number		3842531696	
Load			
Max. total workpiece pallet weight	m_G	kg	250
Min. workpiece pallet weight	m	kg	3
Features			
Material specification		Housing: PA6 Lug cam: PA66	
Operating temperature ¹		°C	0 ... +60

¹ High-temperature stop gate on request

Dimensions



VE 2/RS-H return stop



- ▶ Spring-loaded safety catch
- ▶ Can be used on the left or right
- ▶ Easy fastening in the groove of the ST 2 or BS 2 section profile
- ▶ Pneumatic version, including pneumatic cylinder to open the safety catch. Necessary for reversible operation
- ▶ Can be combined with WT 2, WT 2/F, WT 2/H and WT 2/F-H

Note: The VE 2/RS-H return stop can only be installed on the WT 2 and WT 2/F without spacers.

The return stop prevents the workpiece pallet from rebounding off the VE 2/D stop gate or the DA 2 damper. The use of the VE 2/RS is especially recommended for high total weights and low damping.

In normal condition the stop gate is moved into the lock position by a spring and the workpiece pallet overtravels the VE 2/RS in the direction of transport and is stopped against the transport direction. Mounted inside the tracks, directly on the conveyor section.

Note: Reversible operation is only possible with the pneumatic version.

Delivery notes

Condition on delivery

- ▶ Not assembled

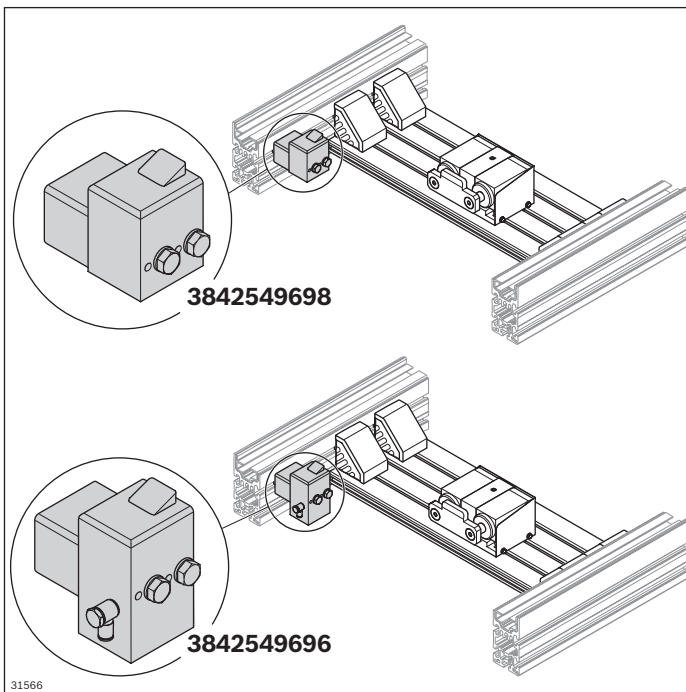
Ordering information

Product designation	Material number
VE 2/RS-H return stop	3842549698
VE 2/RS-H return stop, pneumatic	3842549696

Technical data

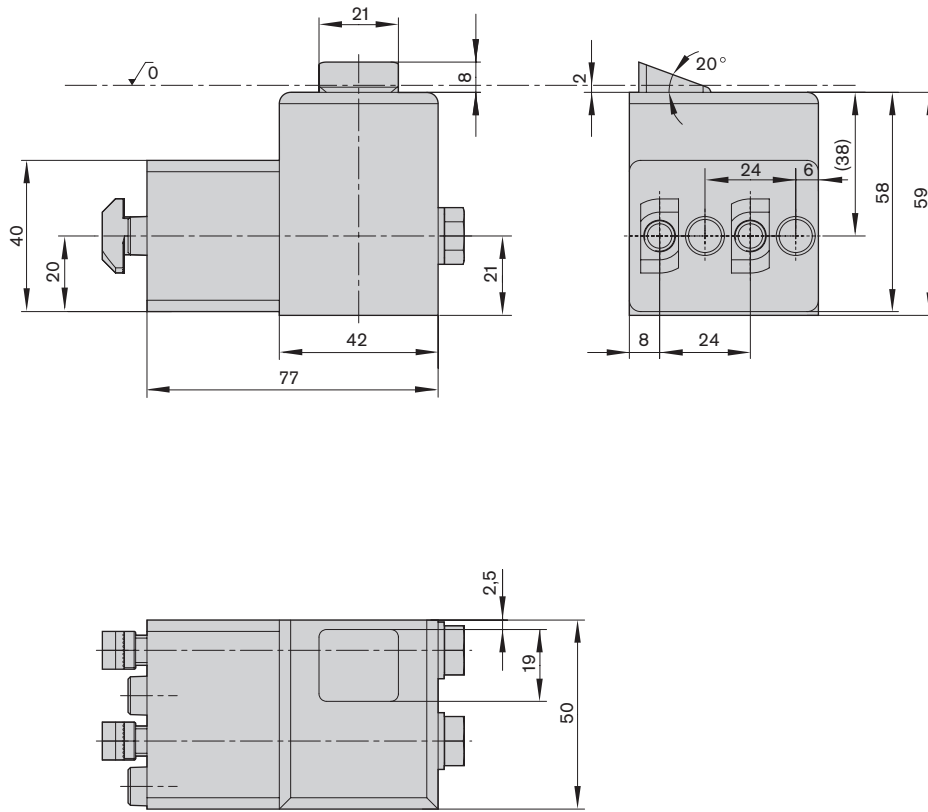
Material number		3842549696		3842549698	
Load					
Max. total workpiece pallet weight	m _G	kg	250		250
Min. workpiece pallet weight	m	kg	3		3
Features					
Material specification			Housing: Aluminum, hard anodized Lug cam: Steel, hardened	Housing: Aluminum, hard anodized Lug cam: Steel, hardened	
Operating temperature ¹		°C	0 ... +60		0 ... +60

¹ High-temperature stop gate on request



31566

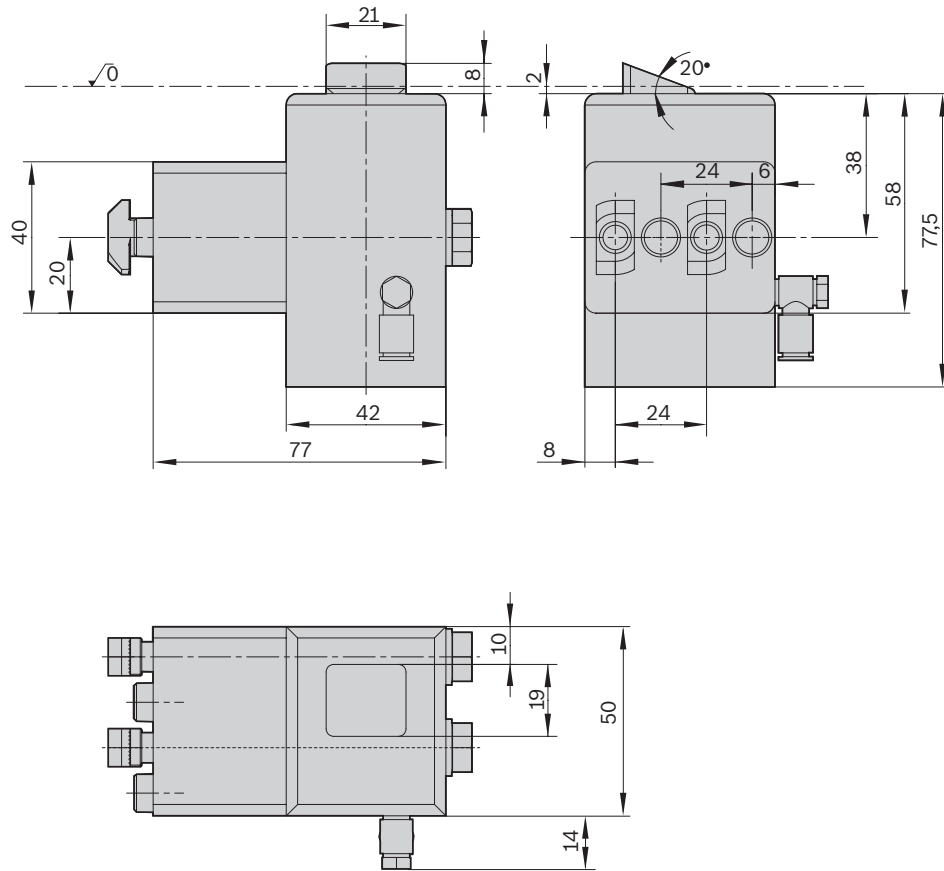
VE 2/RS-H return stop



00013092

00013092

VE 2/RS-H return stop, pneumatic



31565