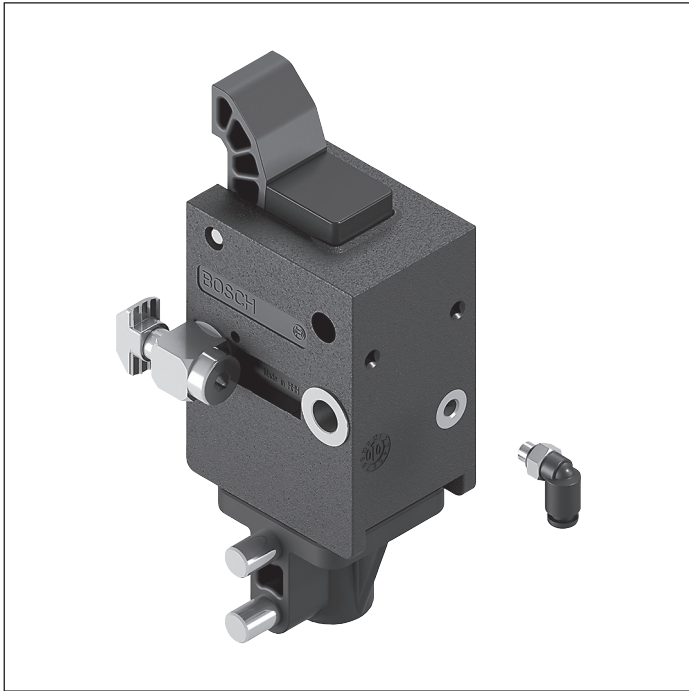


## VA 2/50 slide stop



- ▶ Slide stop, can be lowered pneumatically
- ▶ Reversible operation not permitted
- ▶ Removable slide stop position sensor
- ▶ Not suitable for ST 2...-H sections
- ▶ Can be combined with WT 2/E, WT 2 and WT 2/F

The slide stop is used in a transverse section that connects more than two longitudinal sections and that requires supplementary stops. A lift transverse unit can feed in the workpiece pallet onto the longitudinal section when the

slide stop is activated.

When depressurized, the pneumatically lowered slide stop is extended to the upper end position. Mounted inside the tracks, directly on the conveyor section.

### Accessories

#### Recommended accessories

- ▶ 2x M8x1 sensor, see p. 8-112

### Delivery notes

#### Scope of delivery

- ▶ Incl. all fastening material to mount on ST 2 conveyor section
- ▶ Position sensor

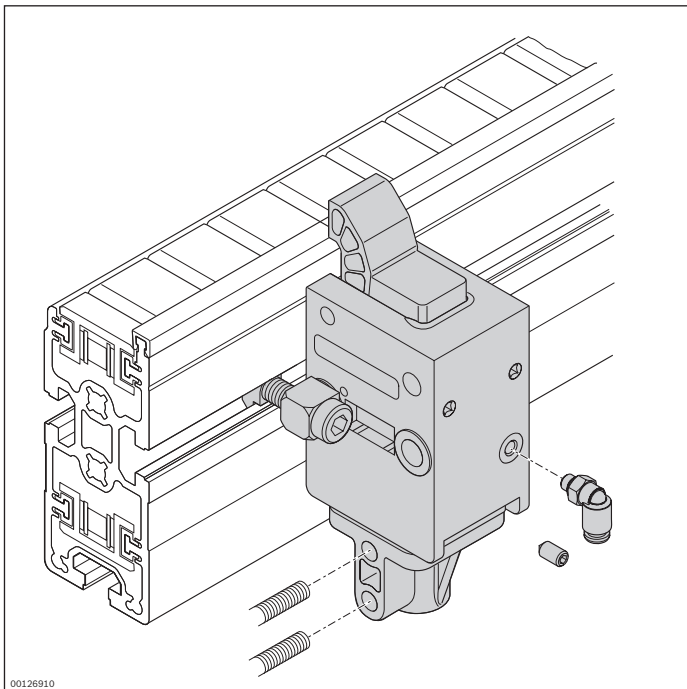
### Ordering information

Product designation	Material number
VA 2/50 slide stop	3842528808

**Technical data**

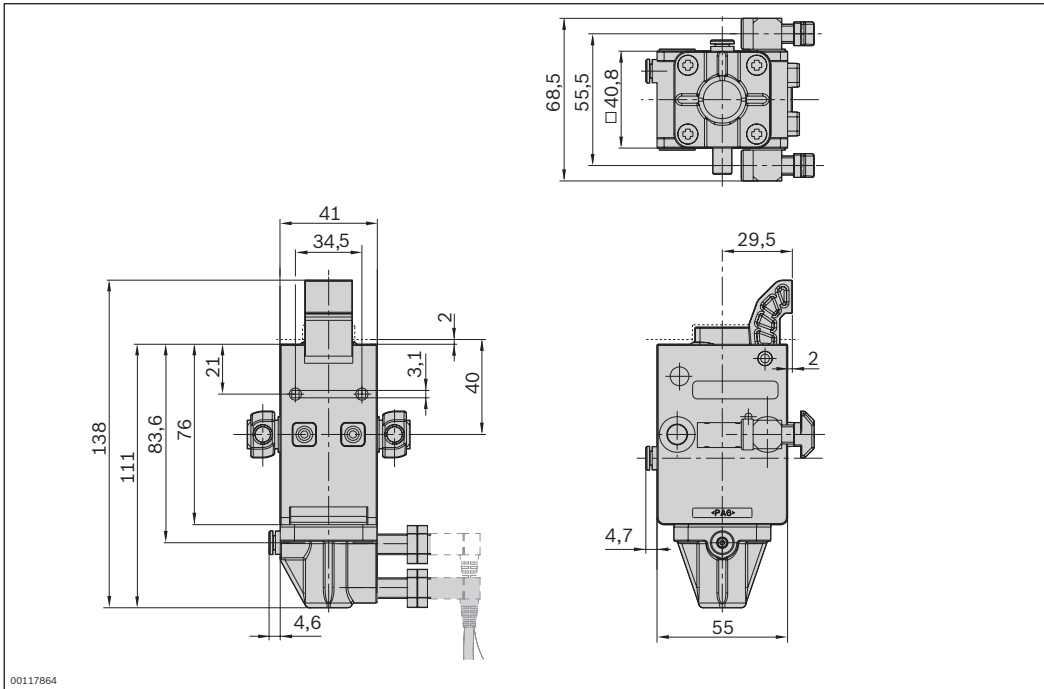
<b>Material number</b>		<b>3842528808</b>	
<b>Load</b>			
Max. total workpiece pallet weight	$m_G$	kg	50
<b>Features</b>			
Material specification			Housing: PA6 Safety catch: PA66 Lug cam: PA66
Max. operating temperature		°C	60
<b>Additional information</b>			
Required compressed air connection	p	bar	4 ... 6
Pneumatic connector	d	mm	4

	<b>Permitted total weight of workpiece pallet</b>	<b>Nominal speed</b>
	$m_G$ (kg)	$v_N$ (m/min)
	50	6
	50	9
	35	12
	25	15
	20	18

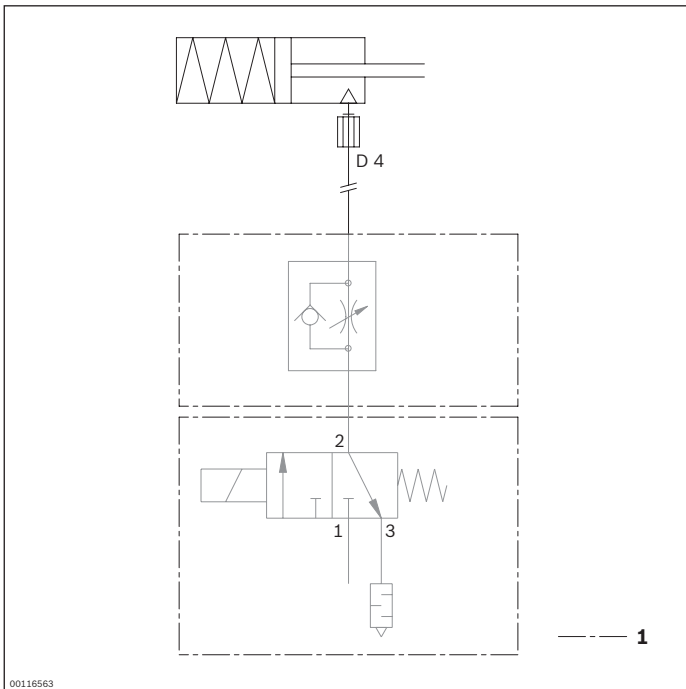


00126910

### Dimensions



### Circuit diagrams



1 Not included in delivery

## VA 2/50 slide stop – reversible



- ▶ Slide stop, can be extended pneumatically
- ▶ Integrated switch bracket
- ▶ Reversible operation possible
- ▶ Not suitable for ST 2...-H sections
- ▶ Inquiry of the slide stop upper position via sensors
- ▶ Can be combined with WT 2 and WT 2/F

The slide stop is used in a transverse section that connects more than two longitudinal sections and that requires supplementary stops. A lift transverse unit can feed in the workpiece pallet onto the longitudinal section when the slide stop is activated.

When depressurized, the pneumatically extended slide stop is lowered to the lower end position. The slide stop upper position can be detected using sensors. Mounted inside the tracks, directly on the conveyor section.

### Accessories

#### Recommended accessories

- ▶ M12x1 sensor, see p. 8-108

### Delivery notes

#### Scope of delivery

- ▶ Incl. all fastening material to mount on ST 2 conveyor section
- ▶ Pivoting elbow fitting

### Ordering information

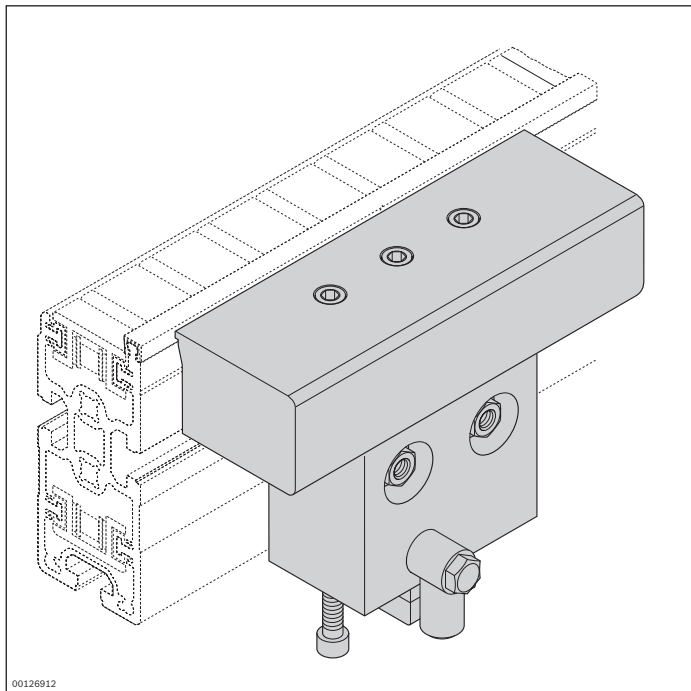
Product designation	Material number
VA 2/50 slide stop – reversible	3842191721

**Technical data**

<b>Material number</b>			<b>3842191721</b>
<b>Load</b>			
Max. total workpiece pallet weight	$m_G$	kg	50
<b>Features</b>			
Material specification			Housing: Aluminum Stop: Aluminum
Max. operating temperature <sup>1</sup>			°C 60
<b>Additional information</b>			
Required compressed air connection	p	bar	4 ... 6
Pneumatic connector	d	mm	6

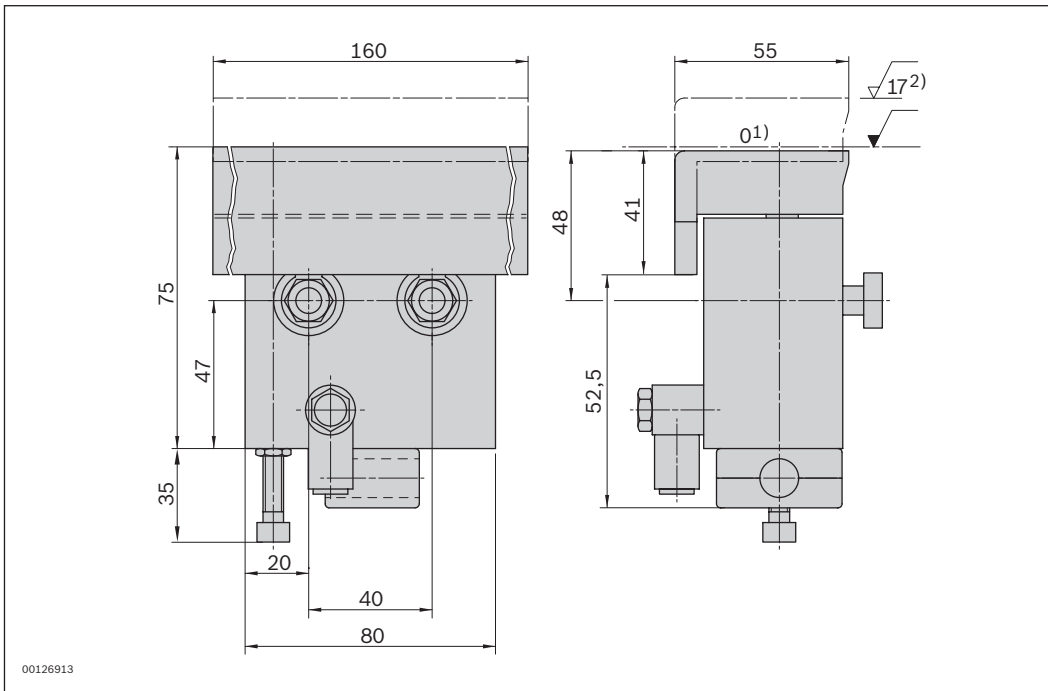
<sup>1</sup> High-temperature stop gate on request

Permitted total weight of workpiece pallet $m_G$ (kg)	Nominal speed $v_N$ (m/min)
50	6
50	9
35	12
25	15
20	18



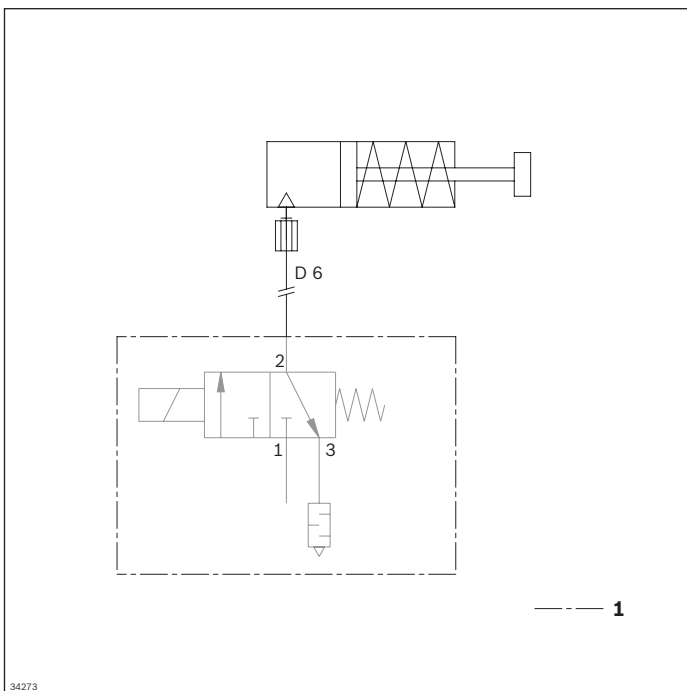
00126912

**Dimensions**



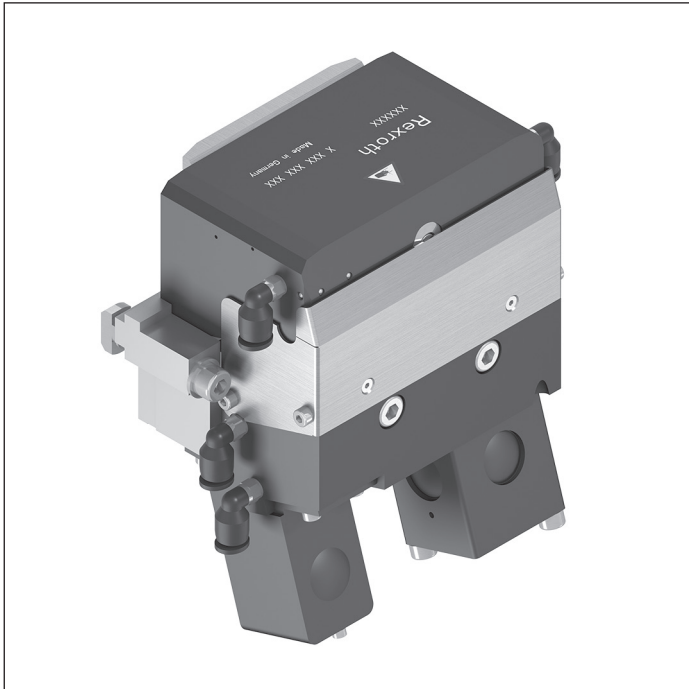
- 1 Conveying level
- 2 Limit stop activated

**Circuit diagrams**



- 1 Not included in delivery

## VA 2/D-130 slide stop



- ▶ Slide stop; can be lowered pneumatically, dampened stop
- ▶ Stopping on the outside of the frame module
- ▶ Can be used in reversible operation
- ▶ Design permits installation to a = 90 mm where space is limited
- ▶ Suitable for mounting on an ST 2/... section with a profile width of 45 mm or an ST 2/...-H section with a profile width of 50 mm
- ▶ 4 positions, can be moved to pneumatically:
  - Upper, lower position and latch in the extended and retracted state
- ▶ 3 positions can be detected:
  - Top, bottom and extended stop rail
  - Can be combined with WT 2, WT 2/F, WT 2/H and WT 2/F-H

The slide stop is used in a transverse section that connects more than two longitudinal sections and that requires supplementary stops. A lift transverse unit can feed in the workpiece pallet onto the longitudinal section when the

slide stop is activated.

The pneumatically adjustable slide stop is extended to the upper end position when the system is depressurized. Mounted inside the tracks, directly on the conveyor section.

### Accessories

#### Recommended accessories

- ▶ M12x1 sensor (3842549814) with  $S_N \geq 4$  mm rated sensing range, length 45 mm, see p. 8-108
- ▶ Clamping holder, see p. 8-55

### Delivery notes

#### Scope of delivery

- ▶ Incl. all fastening material to mount on ST 2 conveyor section
- ▶ Right-angle connector for the Quickfix air connections
- ▶ Position sensor

#### Condition on delivery

- ▶ Fully assembled

### Ordering information

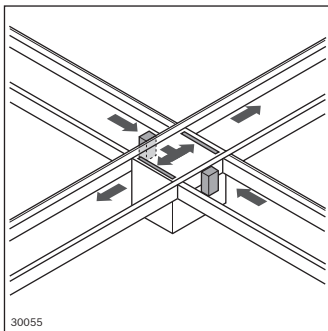
Product designation	Material number
VA 2/D-130 slide stop	3842559001

**Technical data**

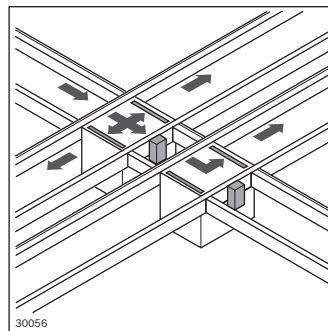
<b>Material number</b>			<b>3842559001</b>
<b>Load</b>			
Max. total workpiece pallet weight	$m_G$	kg	130
Min. workpiece pallet weight	$m$	kg	15
<b>Features</b>			
Material specification			Housing: Aluminum, hard anodized Latch: Steel
Max. operating temperature		°C	60
<b>Additional information</b>			
Required compressed air connection	$p$	bar	4 ... 6
Pneumatic connector	$d$	mm	6
Minimum width for mounting between sections	$b_L$	mm	320

Permitted total weight of workpiece pallet $m_G$ (kg)	Nominal speed $v_N$ (m/min)
130	6
110	9
110	12
100	15
100	18

**Possible installation location for VA2/D-130**



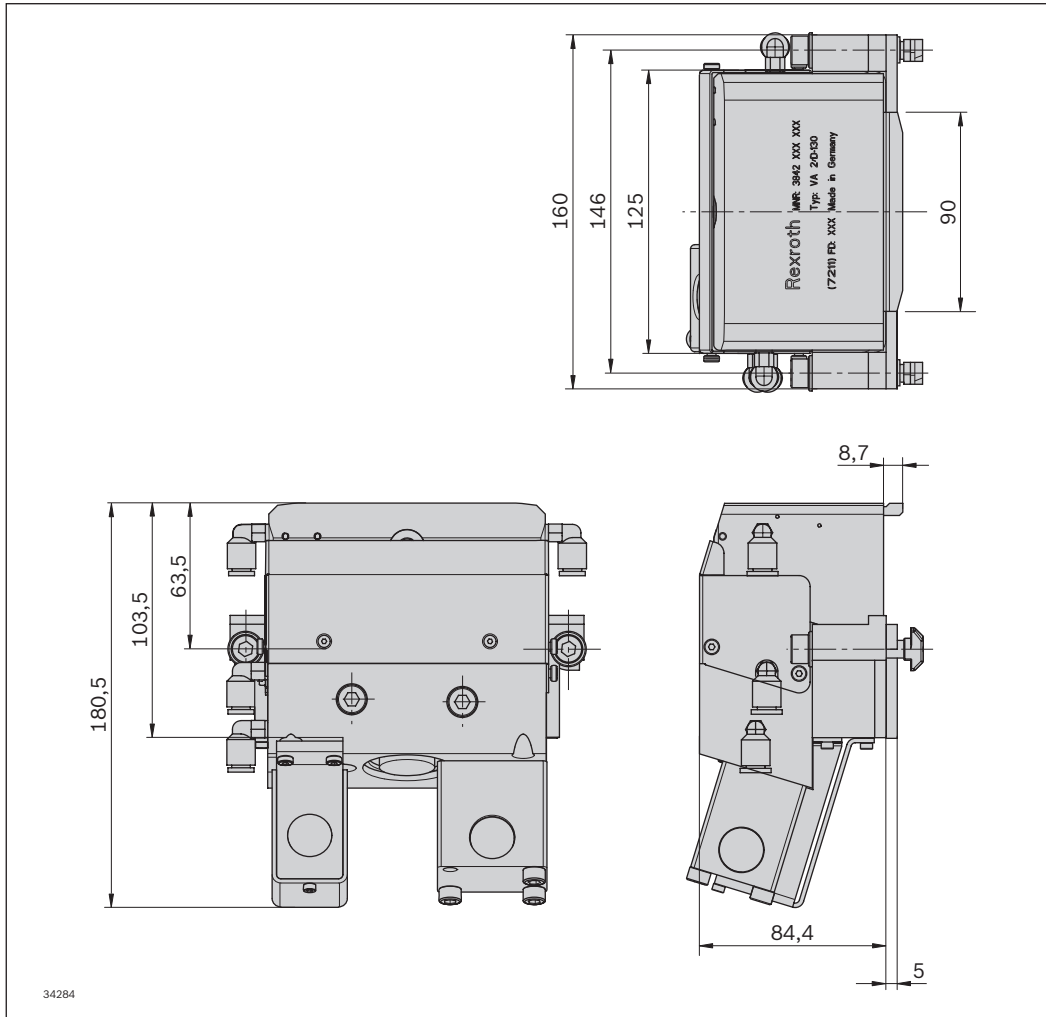
As a node point



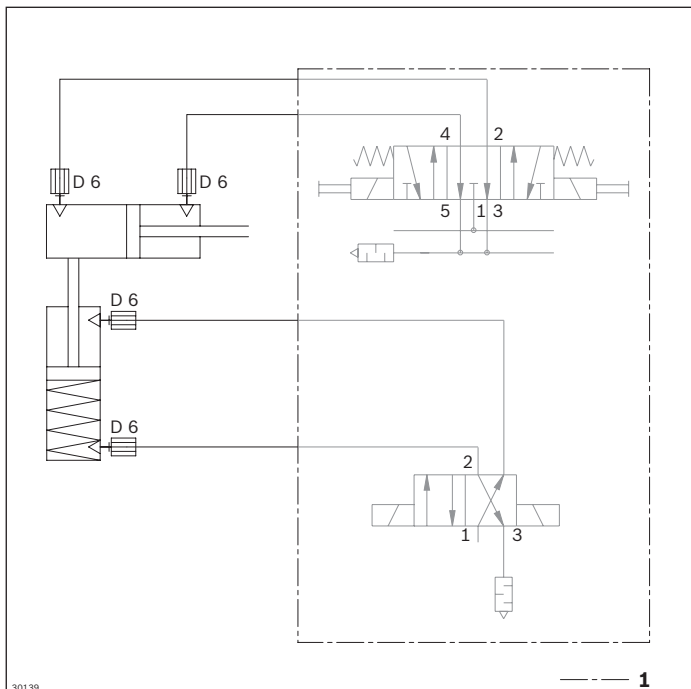
During outfeeding on parallel section



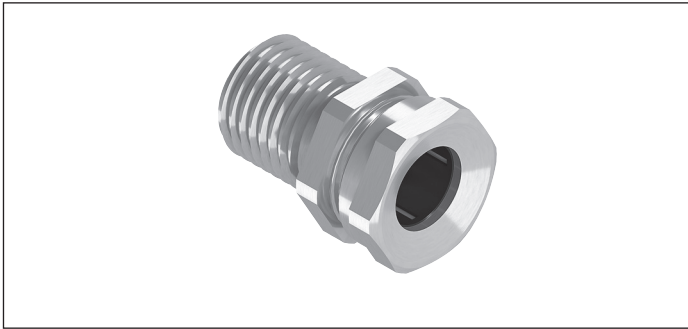
**Dimensions**



**Circuit diagram**



# Clamping holder

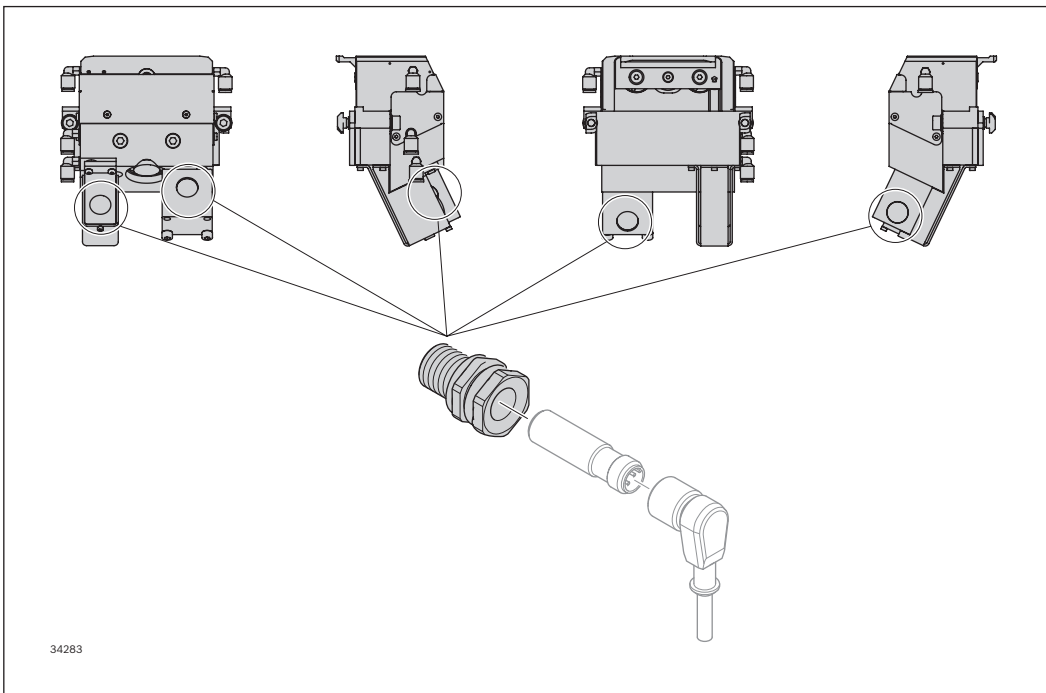


- ▶ Clamping holder for sensor for screwing into VA 2/D-130 slide stop, d = 12 mm
- ▶ Adapter for variable positioning of the sensor

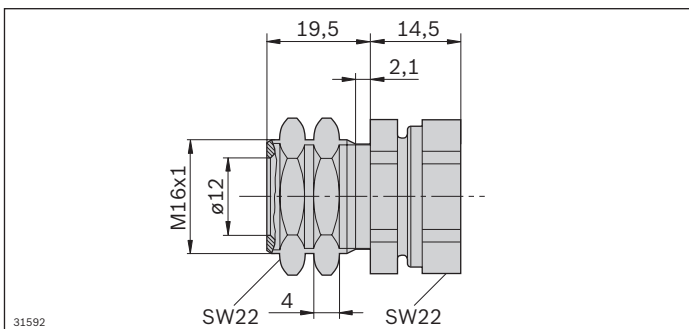
## Ordering information

Product designation	Packaging unit	Material number
Clamping holder	1	3842545974

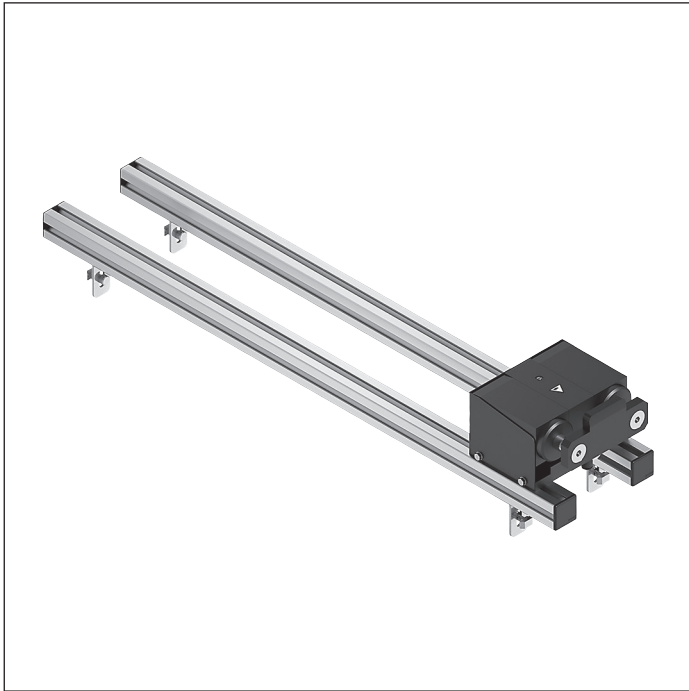
## Technical data



## Dimensions



## VA 2/D-250 slide stop



- ▶ Slide stop, pneumatically lowered, dampened stop for use with HQ 2/C-H only (minimum longitudinal width from  $b_Q = 480$  mm, minimum transverse width from  $b_L = 640$  mm)
- ▶ Stopping on the inside of the WT frame module
- ▶ Continuously adjustable damping
- ▶ When the pressure is released by a spring into the lock position
- ▶ Can be combined with WT 2/H and WT 2/F-H

The slide stop is used in a transverse section that connects more than two longitudinal sections and that requires supplementary stops. A lift transverse unit can feed in the workpiece pallet onto the longitudinal section when the

slide stop is activated.

The pneumatically adjustable slide stop is extended to the upper end position when the system is depressurized. Mounting inside the HQ 2/C-H lift transverse unit.

### Delivery notes

#### Scope of delivery

- ▶ Incl. all fastening material to mount on ST 2 conveyor section
- ▶ Right-angle connector for the Quickfix design air connection
- ▶ Position sensor

#### Condition on delivery

- ▶ Not assembled

### Ordering information

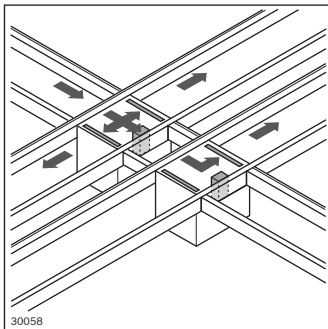
Material number		3842998796
$b_L$ (mm)	Track width in the longitudinal conveyor	640; 800; 1040; 1200
$b_L$ (mm)	Track width in the longitudinal conveyor	640 ... 1200
$b_Q$ (mm)	Track width in the transverse conveyor	480; 640; 800; 1040; 1200; 480 ... 1200

## Technical data

<b>Material number</b>		<b>3842998796</b>	
<b>Load</b>			
Max. total workpiece pallet weight	$m_G$	kg	250
<b>Features</b>			
Material specification	Housing: Aluminum, hard anodized Stop: Steel, hardened		
Operating temperature <sup>1</sup>		°C	-20 ... +80
<b>Dimensions</b>			
Minimum length of workpiece pallet	$l_{wt}$		400
<b>Additional information</b>			
Required compressed air connection	p	bar	4 ... 6
Pneumatic connector	d	mm	6

<sup>1</sup> High-temperature stop gate on request

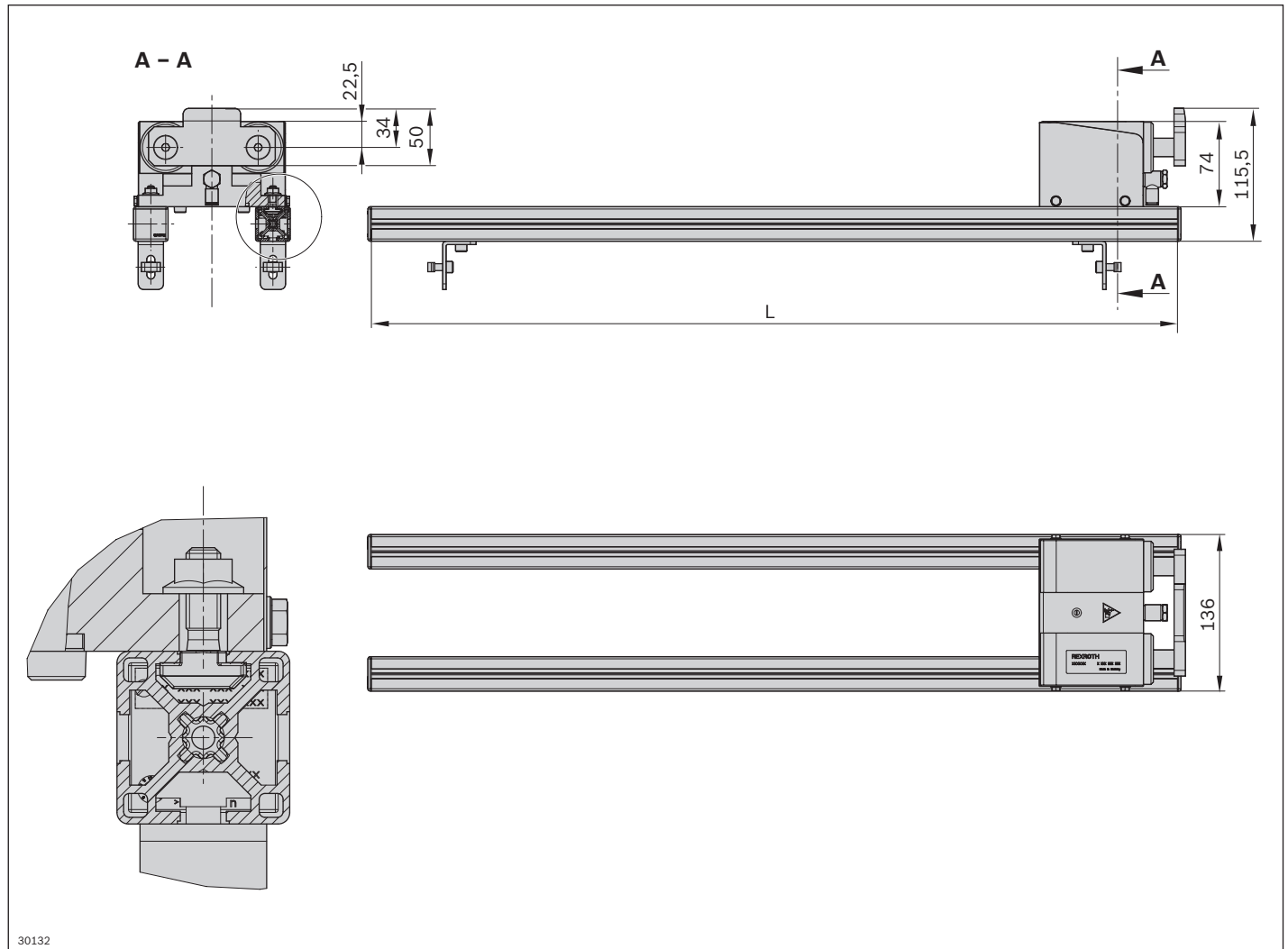
## Possible installation location for VA 2/D-250



During outfeeding on parallel section

When attaching inside an HQ 2/C-H, the VA 2/D-250 must be positioned on the opposite side of the hexagonal shaft in each case.

**Dimensions**

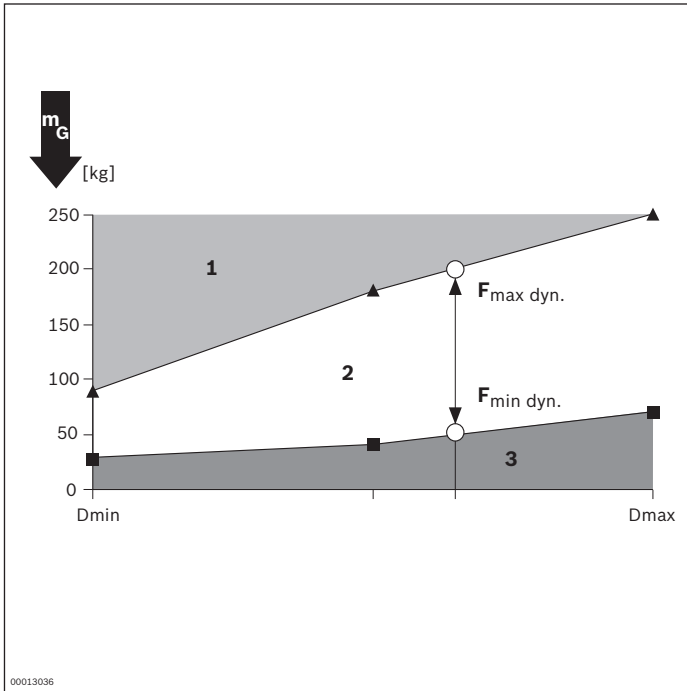


30132

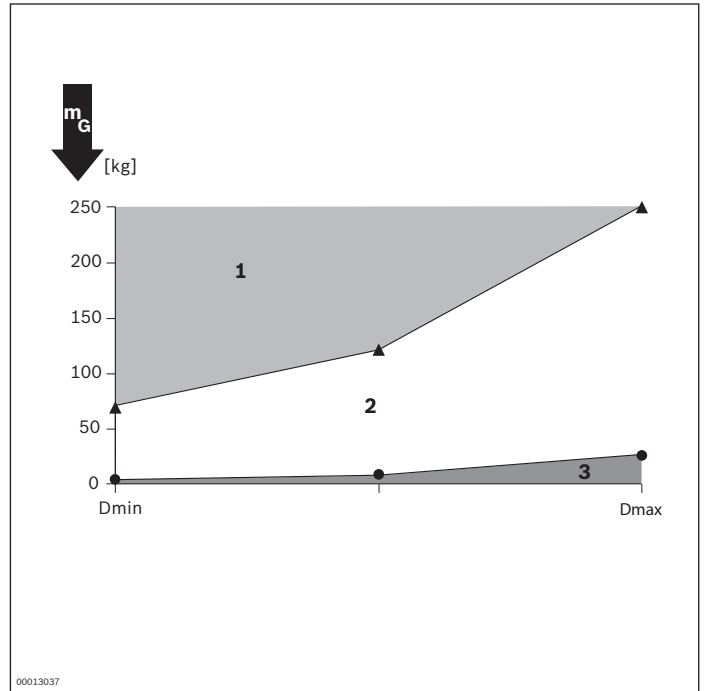
Track width in the longitudinal conveyer $b_L$ (mm)	Dimension L (mm)
640	519
800	679
1040	919
1200	1079

**Characteristic curve diagram**

**Damping setting, accumulation roller chain  $\mu = 0.02$**



**Damping setting, flat top chain  $\mu = 0.2$**



**Circuit diagram**

