

## WI/M, WI 2/... rockers



Rockers are used for the following areas:

- For area monitoring
- As a stop for transverse conveying of workpiece pallets
- For workpiece pallet detection

Depending on the desired function, the WI/M, WI 2/... rockers should be fitted with either one (WI/M) or two (WI 2) sensors (see p. 8-114).

### Rocker functions



#### Area monitoring

The stop rail leans slightly to one side and, together with a sensor, signals the presence of a workpiece pallet in the area of this rail. The length of the monitored area depends on the length of the stop rail.

The sensor for the stop rail is damped when the rocker is deactivated. For WI/M, the sensor is dampened when the rocker is activated.



#### Stop

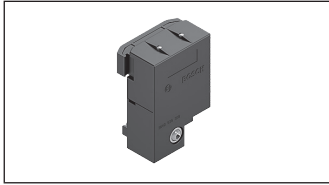
At the end of a lift transverse unit the workpiece pallet is stopped by the slide stop or by the rocker in its capacity as a stop.

Dampened WI 2/D rockers are recommended for total workpiece pallet weights of > 35 kg.



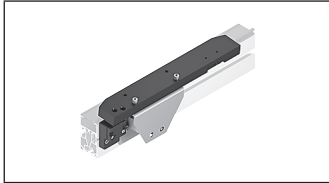
#### Workpiece pallet detection

If a WI 2 rocker is fitted with a second sensor, not only can an area be monitored, but the position of a WT 2 workpiece pallet – in position on the lift transverse unit – can also be detected. This is necessary, for example, if rockers are used together with EQ 2 reversible lift transverse units. The second sensor, which can be fitted later whenever required, is attenuated if the workpiece pallet is positioned centrally in front of the activated rocker.



**WI/M rockers**

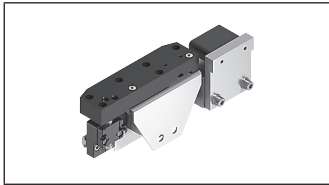
**8-133**



**WI 2 rockers**



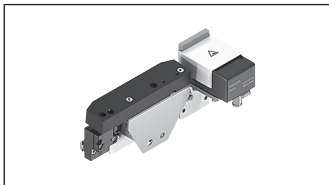
**8-139**



**WI 2/X rockers**



**8-143**

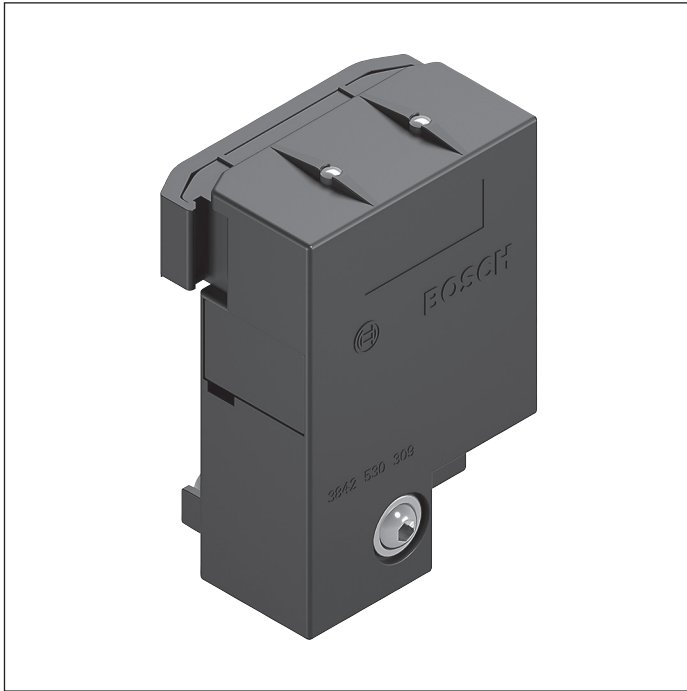


**WI 2/D rockers**



**8-145**

## WI/M rocker



- ▶ For area monitoring
- ▶ For workpiece pallet detection
- ▶ For accumulation pressure control
- ▶ Simple and compact construction
- ▶ Suitable for mounting on an ST 2/... section with a profile width of 45 mm or an ST 2/...-H section with a profile width of 50 mm
- ▶ Can be combined with WT 2, WT 2/F, WT 2/H and WT 2/F-H

8

The WI/M rocker is used for area monitoring on transfer systems. The WI/M rocker is unsuitable for use as a stop for workpiece pallets arriving from the transverse conveyor. In addition, a stop or damper must be installed to absorb the impact pulse corresponding to the workpiece pallet weight. The spring-mounted rocker switch physically detects workpiece pallets. The metal element in the rocker switch

engages a sensor to enable detection. Alternatively, a pneumatic cylinder switch can be used to convert the rocker activation directly into a pneumatic signal. Simple, purely pneumatic accumulation pressure regulation can be established in conjunction with a VE 2 stop gate.

### Accessories

#### Recommended accessories

- ▶ M12x1 sensor with  $S_N \geq 4$  mm rated sensing range, length 70 mm, see p. 8-108
- ▶ Pneumatic cylinder switch, see p. 8-136

### Delivery notes

#### Scope of delivery

- ▶ Including fastening material for installation on ST 2 conveyor sections or BS 2 belt sections.

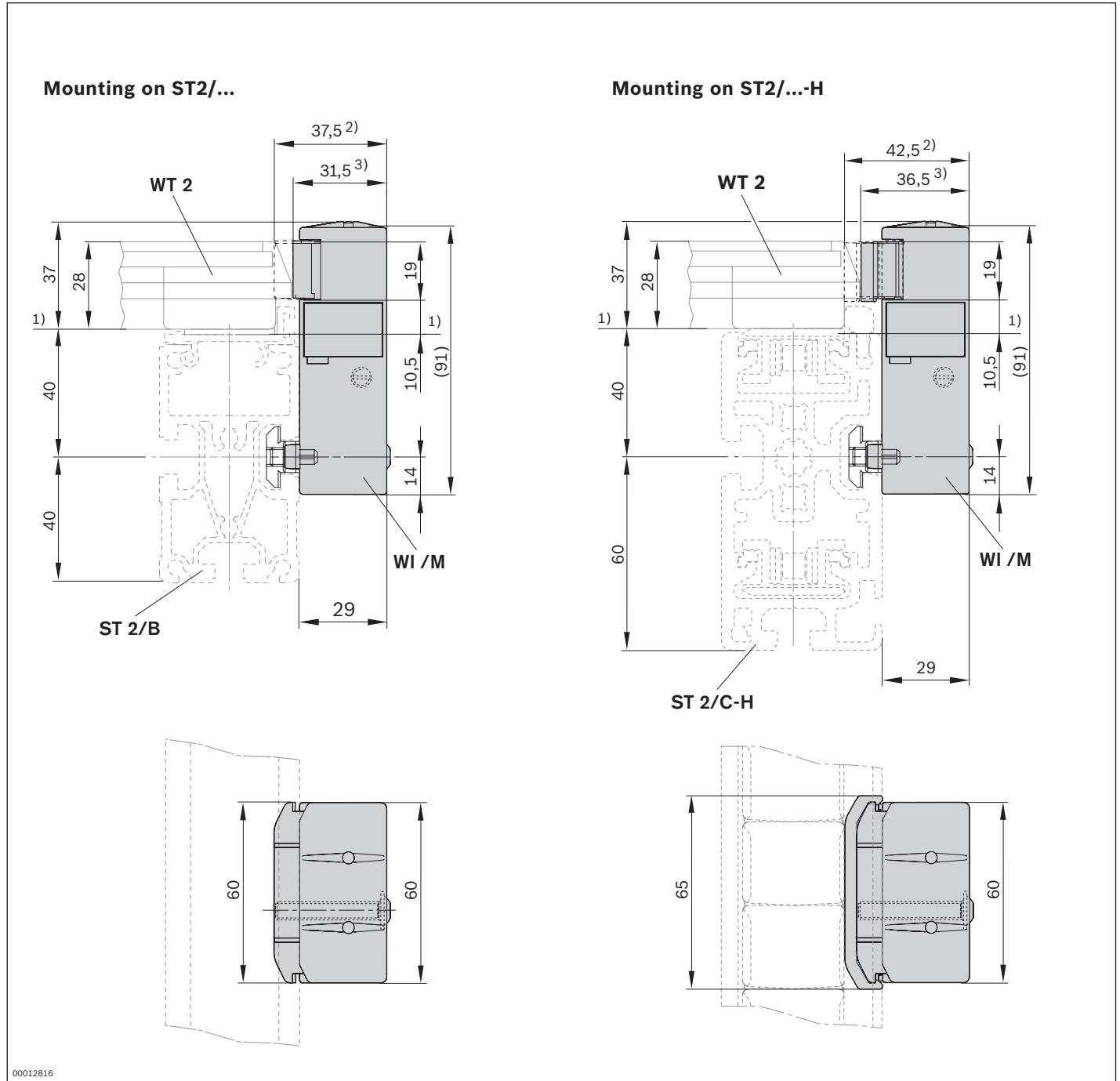
### Ordering information

Product designation	Material number
WI/M rocker	3842530797

### Technical data

<b>Material number</b>	<b>3842530797</b>	
<b>Features</b>		
Monitoring range	mm	60

**Dimensions**

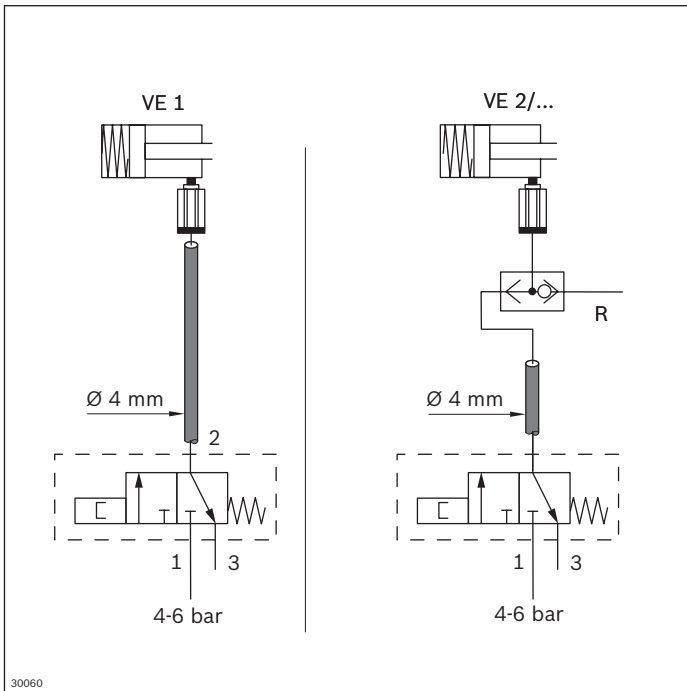


00012816

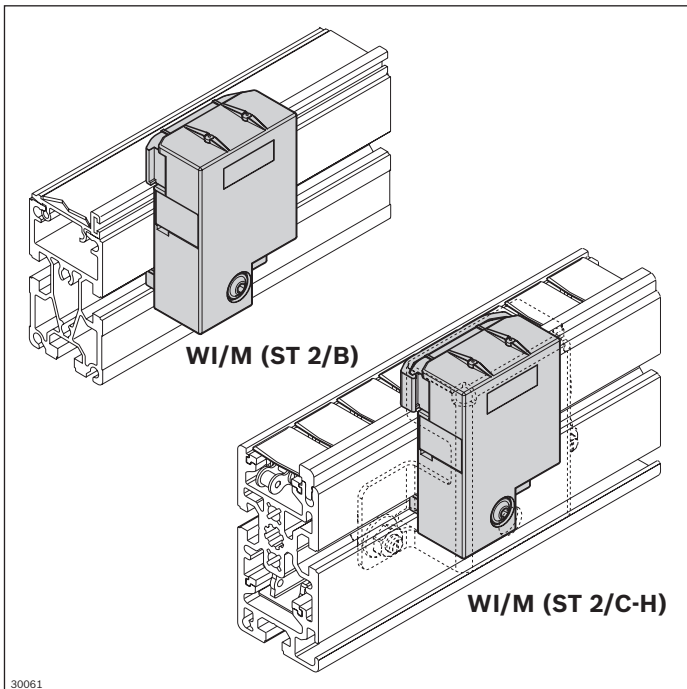
- 1 Conveying level
- 2 Limit stop not activated
- 3 Limit stop activated

Note: Rocker activated, electrical sensor dampened

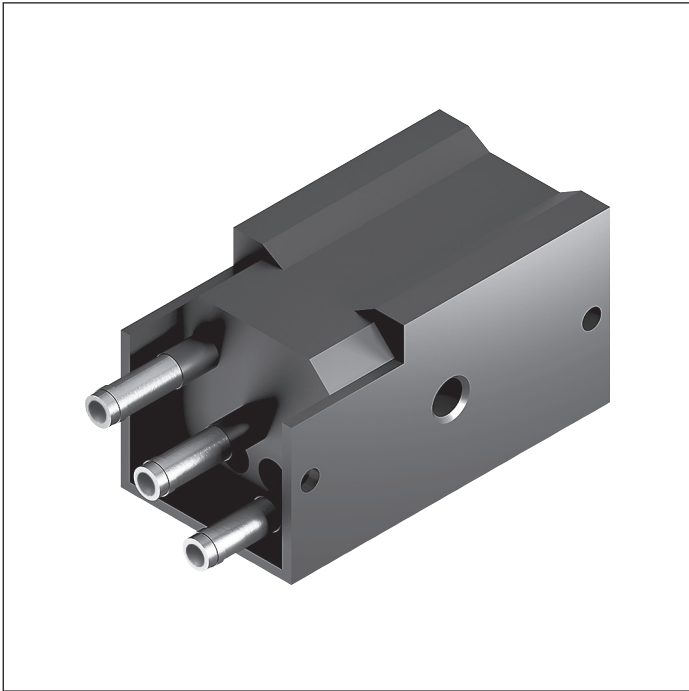
### Circuit diagrams



### Installation locations on ST 2 or ST 2/...-H



## Pneumatic cylinder switch



The pneumatic cylinder switch is used for direct conversion of the slide activation into a pneumatic signal. Simple, purely pneumatic accumulation pressure regulation can be

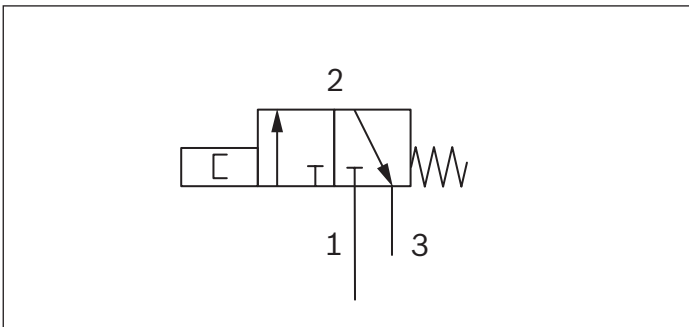
established in conjunction with a VE 2 stop gate.

### Ordering information

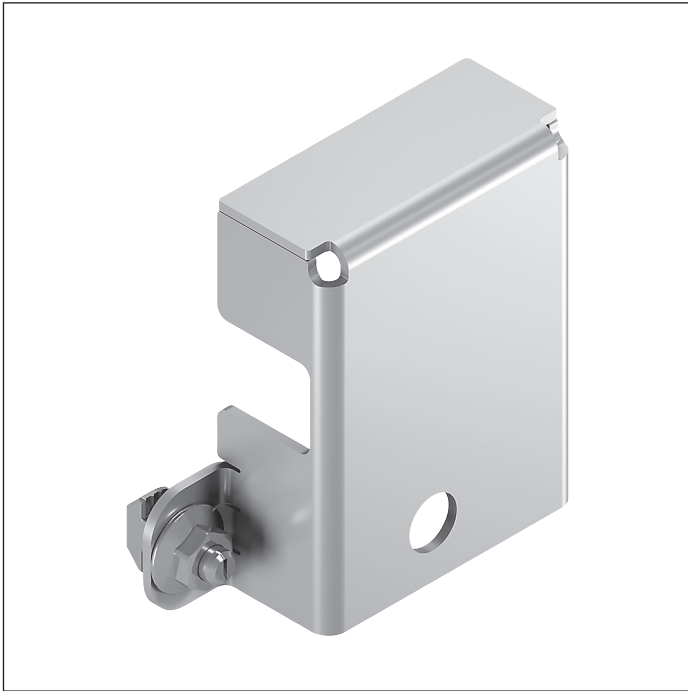
Product designation	Material number
Pneumatic cylinder switch	3842532151

Note: Rocker not activated, pneumatic cylinder switch in operating position.

### Circuit diagrams



## WI/M protective cover



The protective cover enables the WI/M rocker to be used in harsh industrial environments.

### Delivery notes

#### Scope of delivery

- ▶ Incl. fastening material

#### Condition on delivery

- ▶ Not assembled

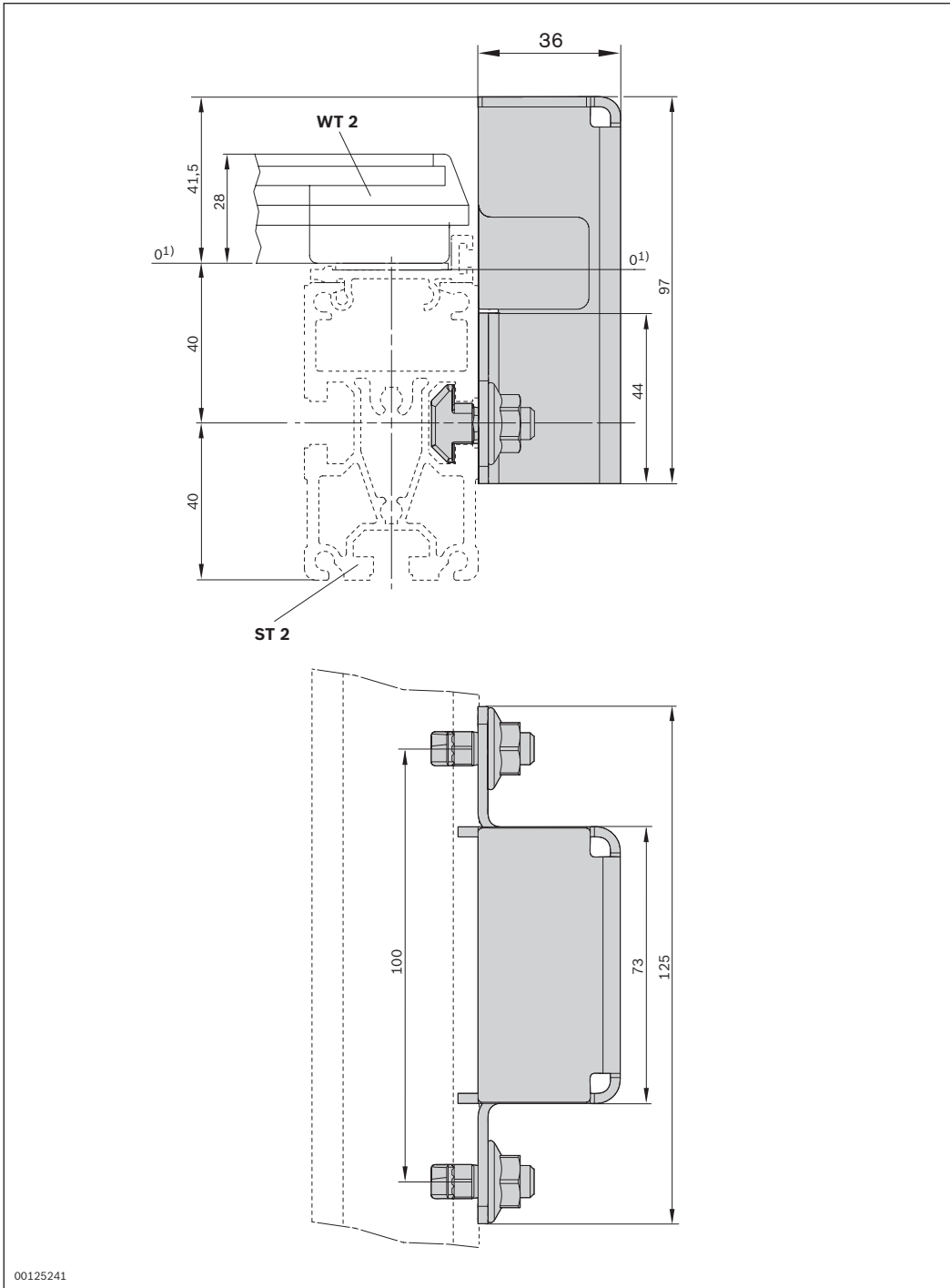
### Ordering information

Product designation	Material number
WI/M protective cover	3842537855

### Technical data

Material number	<b>3842537855</b>
Features	
Material specification	Sheet steel; corrosion-resistant

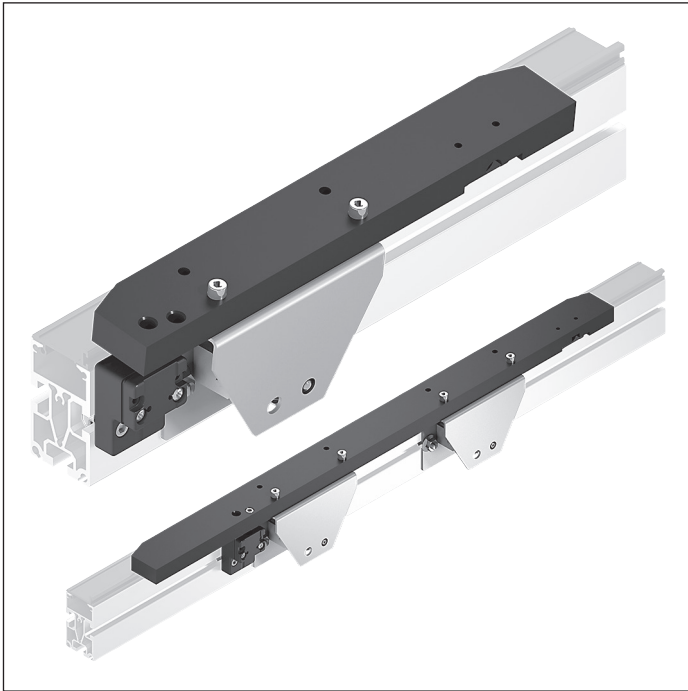
**Dimensions**



1 Conveying level



## WI 2 rocker



- ▶ For area monitoring
- ▶ For workpiece pallet detection
- ▶ As a stop for transverse transportation of workpiece pallets
- ▶ Suitable for mounting on an ST 2/... section with a profile width of 45 mm or an ST 2/...-H section with a profile width of 50 mm
- ▶ Can be combined with WT 2 and WT 2/F
- ▶ Suitable for use in an EPA

One basic rocker element for workpiece pallet lengths of  $\leq 480$  mm

Two basic rocker elements for workpiece pallet lengths of  $\geq 640$  mm

### Delivery notes

#### Scope of delivery

- ▶ Including fastening material for installation on the ST 2 conveyor section or BS 2 belt section.

### Ordering information

Product designation	Material number
WI 2 rocker b <sub>Q</sub> = 160	3842348780
WI 2 rocker b <sub>Q</sub> = 240	3842348781
WI 2 rocker b <sub>Q</sub> = 320	3842348782
WI 2 rocker b <sub>Q</sub> = 400	3842348783
WI 2 rocker b <sub>Q</sub> = 480	3842348784
WI 2 rocker b <sub>Q</sub> = 640	3842348786
WI 2 rocker b <sub>Q</sub> = 800	3842348788

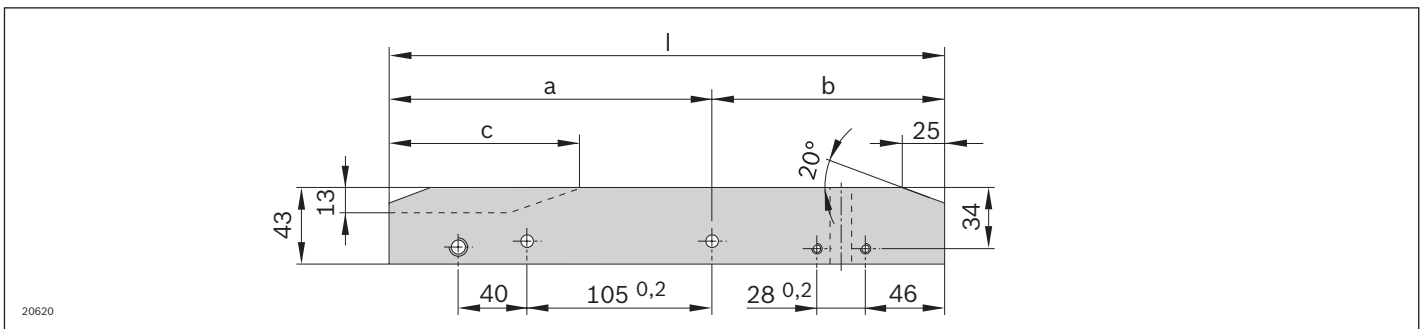
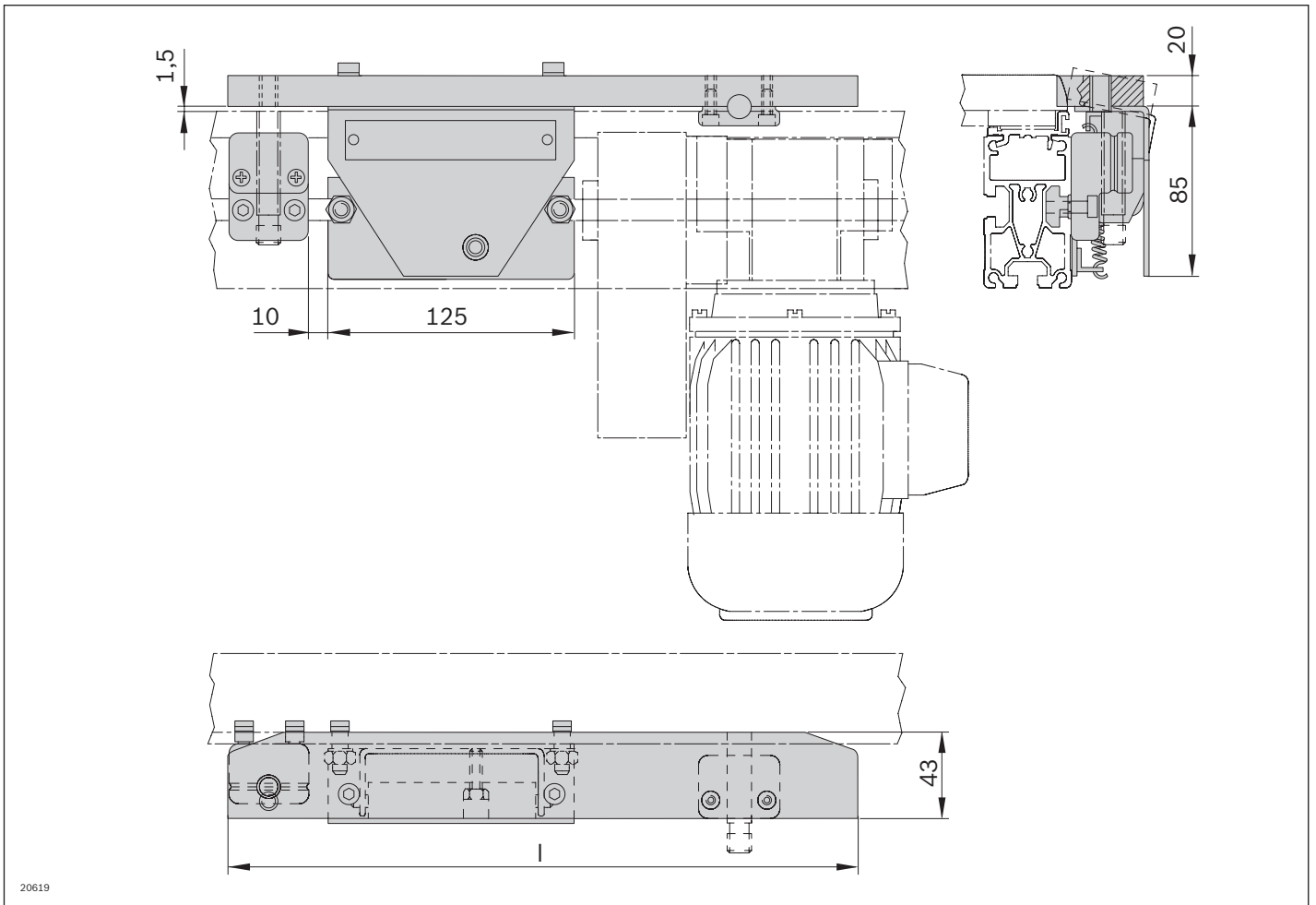
### Technical data

Material number			3842348780	3842348781	3842348782	3842348783
<b>Load</b>						
Max. total workpiece pallet weight <sup>1</sup>	m <sub>G</sub>	kg	30	30	30	30
Min. workpiece pallet weight <sup>2</sup>	m	kg	1.5	1.5	1.5	1.5
<b>Features</b>						
ESD			Yes	Yes	Yes	Yes
Monitoring range		mm	165	270	350	430
<b>Dimensions</b>						
Length	l	mm	320	320	400	480
Material number				3842348784	3842348786	3842348788
<b>Load</b>						
Max. total workpiece pallet weight <sup>1</sup>	m <sub>G</sub>	kg		30	30	30
Min. workpiece pallet weight <sup>2</sup>	m	kg		1.5	3.0	3.0
<b>Features</b>						
ESD				Yes	Yes	Yes
Monitoring range		mm		510	670	830
<b>Dimensions</b>						
Length	l	mm		560	720	880

<sup>1</sup> Max. total WT weight applies when feeding from a transverse section into a main section; for area monitoring, only the max. system weight of 240 kg cannot be exceeded.

<sup>2</sup> Min. WT weight applies per rocker

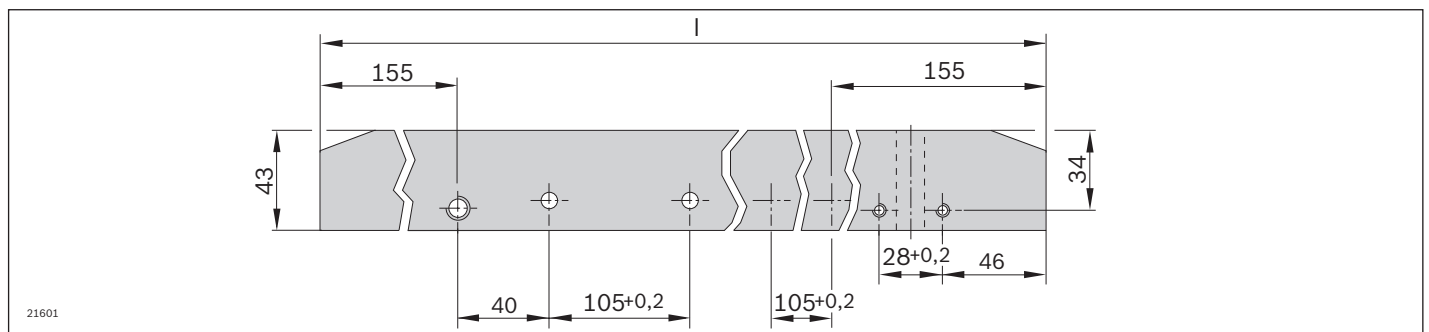
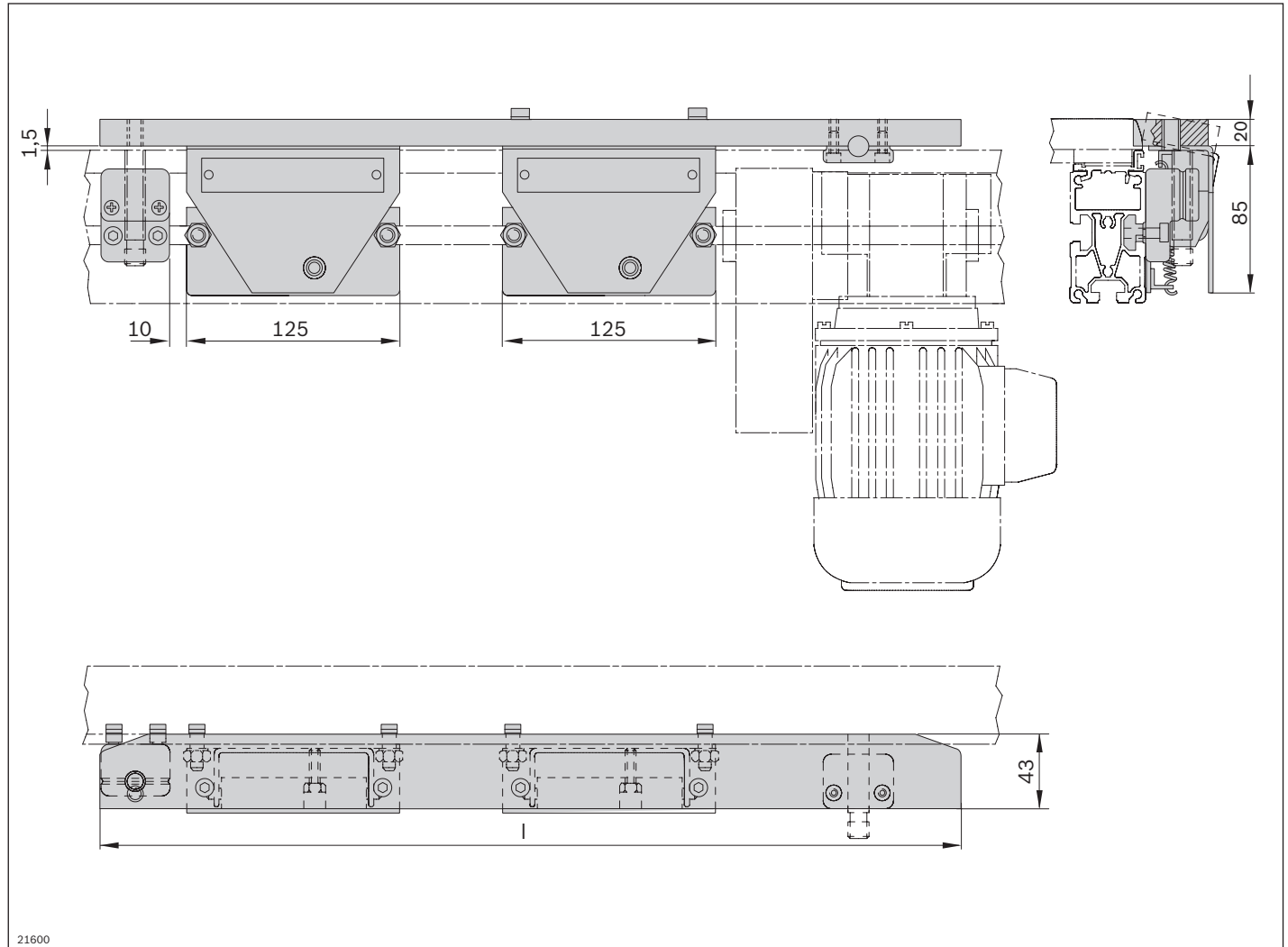
For workpiece pallet lengths of  $\leq 480$  mm



Track width in the transverse conveyor $b_0$ (mm)	Dimension a (mm)	Dimension b (mm)	Dimension c (mm)	Dimension l (mm)
160	165	155	105	320
240	165	155	25	320
320	245	155	25	400
400	292	188	25	480
480	332	228	25	560

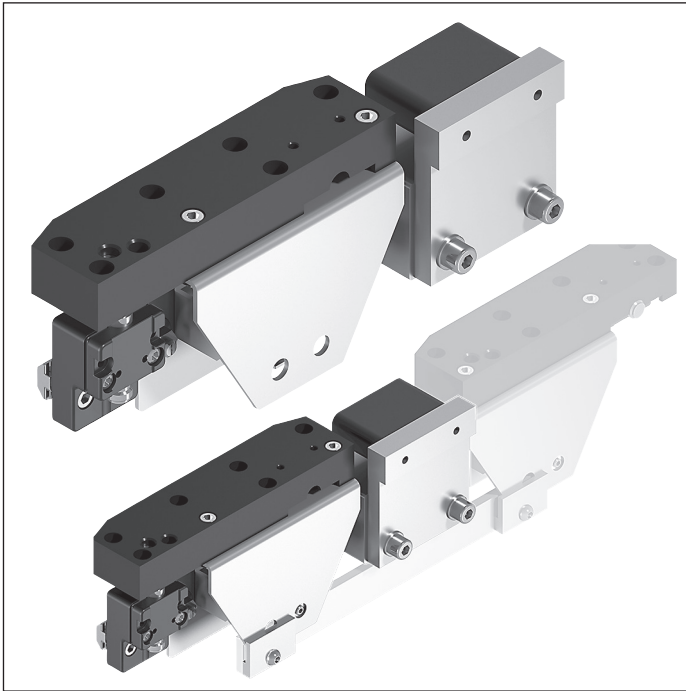
**Dimensions**

For workpiece pallet lengths of  $\geq 640$  mm



Track width in the transverse conveyor $b_o$ (mm)	Dimension $l$ (mm)
640	720
800	880

## WI 2/X rocker



- ▶ Fixed stop for workpiece pallet in the transverse conveyor
- ▶ For area monitoring
- ▶ For workpiece pallet detection
- ▶ For permitted total weight of workpiece pallets > 30 kg
- ▶ Suitable for mounting on an ST 2/... section with a profile width of 45 mm or an ST 2/...-H section with a profile width of 50 mm
- ▶ Can be combined with WT 2 and WT 2/F
- ▶ Suitable for use in an EPA

8

### Accessories

#### Required accessories

- ▶ Round M12 sensor with a rated sensing range  $S_N \geq 4$  mm, see p. 8-108

### Delivery notes

#### Scope of delivery

- ▶ Including fastening material for fastening to ST 2 conveyor sections or BS 2 belt sections.

### Ordering information

Product designation	Material number
WI 2/X rocker	3842524447
MS rocker extension $l_{wt} = 400$	3842524449
MS rocker extension $l_{wt} = 480$	3842524450
MS rocker extension $l_{wt} = 640$	3842524451
MS rocker extension $l_{wt} = 800$	3842524452
MS rocker extension $l_{wt} = 1040; 1200$	3842524453

### Recommended accessories

- ▶ Additional MS rocker extension with second rocker and connecting strip for installation of a rocker positioned between the start and end of the conveyor section.

### Technical data

<b>Material number</b>	<b>3842524447</b>		
<b>Load</b>			
Max. total workpiece pallet weight <sup>1</sup>	m <sub>G</sub>	kg	100
Min. workpiece pallet weight <sup>2</sup>	m	kg	1.5
<b>Features</b>			
ESD			Yes
Monitoring range	mm		430 ... 1230

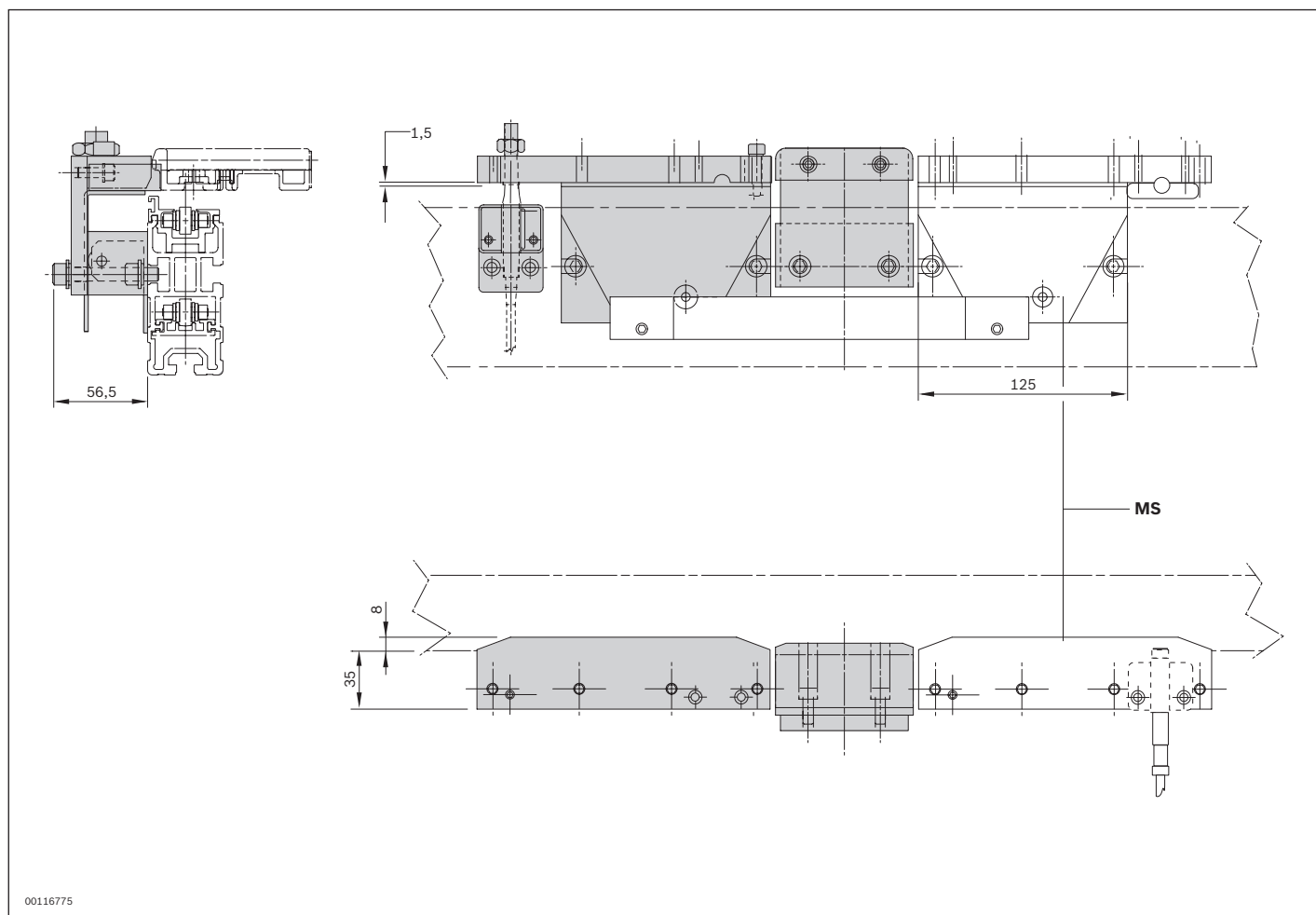
<sup>1</sup> Max. total WT weight applies when feeding from a transverse section into a main section; for area monitoring, only the max. system weight of 240 kg cannot be exceeded.

<sup>2</sup> Min. WT weight applies per rocker

### MS rocker extension

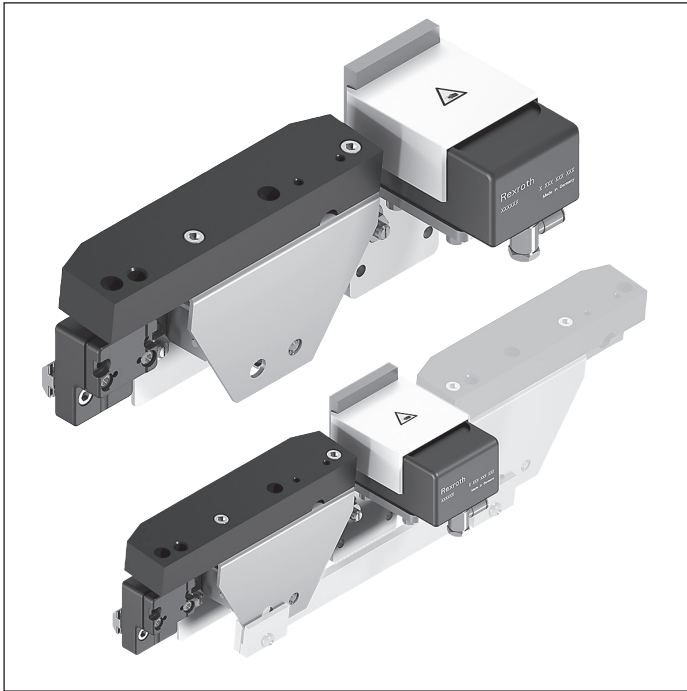
<b>Material number</b>	<b>3842524449</b>	<b>3842524450</b>	<b>3842524451</b>	<b>3842524452</b>	<b>3842524453</b>	
<b>Dimensions</b>						
Length of workpiece pallet l <sub>WT</sub>	mm	400	480	640	800	1040; 1200
<b>Features</b>						
ESD		Yes	Yes	Yes	Yes	Yes
Monitoring range	mm	430	510	670	830	1230

### Dimensions



MS Additional rocker extension

## WI 2/D rocker



- ▶ As a dampened stop for workpiece pallets in the transverse conveyor
- ▶ For area monitoring
- ▶ For workpiece pallet detection
- ▶ For permitted total weight of workpiece pallets > 35 kg
- ▶ Suitable for mounting on an ST 2/... section with a profile width of 45 mm or an ST 2/...-H section with a profile width of 50 mm
- ▶ Can be combined with WT 2 and WT 2/F
- ▶ Suitable for use in an EPA

8

### Accessories

#### Required accessories

- ▶ Round M12 sensor with a rated sensing range  $S_N \geq 4$  mm, see p. 8-108

### Delivery notes

#### Scope of delivery

- ▶ Incl. fastening material
- ▶ Incl. DA 2/100 damper

### Ordering information

Product designation	Material number
WI 2/D rocker	3842524448

### Recommended accessories

- ▶ Additional MS rocker extension with second rocker and connecting strip for installation of a rocker positioned between the start and end of the conveyor section from a monitoring range of 400 mm.

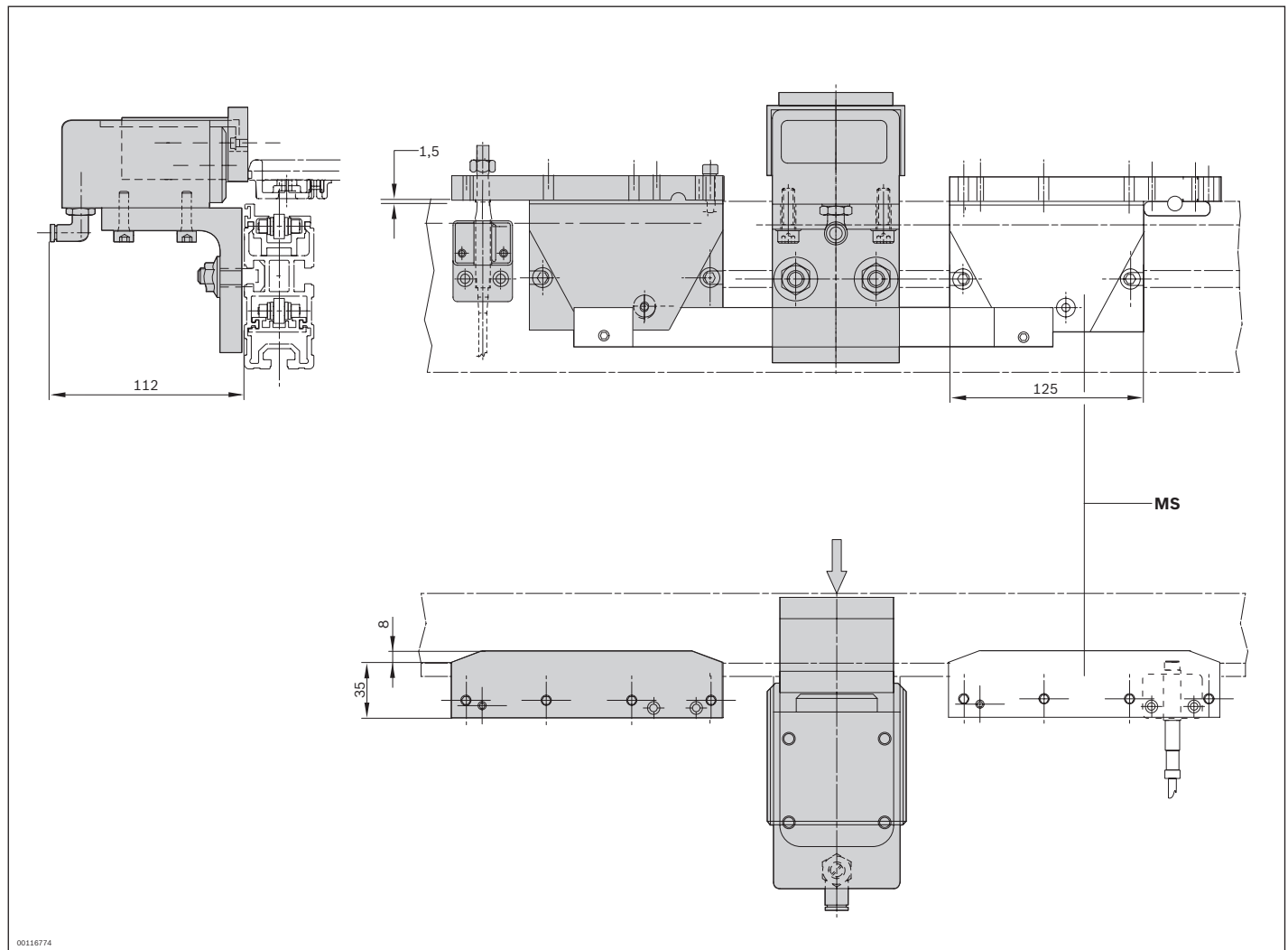
**Technical data**

<b>Material number</b>	<b>3842524448</b>		
<b>Load</b>			
Max. total workpiece pallet weight <sup>1</sup>	m <sub>G</sub>	kg	100
Min. workpiece pallet weight <sup>2</sup>	m	kg	5
<b>Features</b>			
ESD			Yes
Monitoring range	mm		430 ... 1230

<sup>1</sup> Max. total WT weight applies when feeding from a transverse section into a main section; for area monitoring, only the max. system weight of 240 kg cannot be exceeded.

<sup>2</sup> Min. WT weight applies per rocker

**Dimensions**

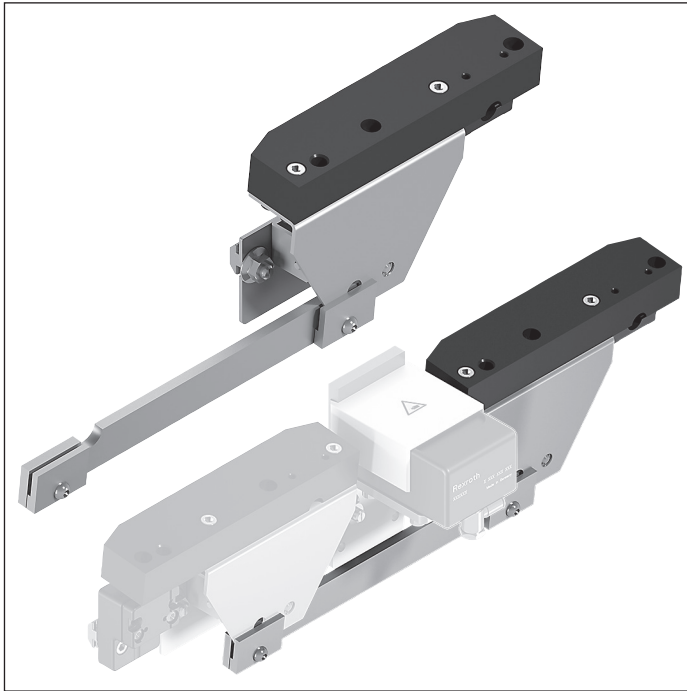


00116774

MS Additional rocker extension



## MS rocker extension



► Suitable for use in an EPA

8

Rocker extension as a second rocker with connecting strip for installation of a rocker positioned between the start and end of the conveyor section.

### Required accessories

► WI 2/X or WI 2/D rocker, see p. 8-143/8-145

### Ordering information

Product designation	Material number
MS rocker extension $l_{WT} = 400$	3842524449
MS rocker extension $l_{WT} = 480$	3842524450
MS rocker extension $l_{WT} = 640$	3842524451
MS rocker extension $l_{WT} = 800$	3842524452
MS rocker extension $l_{WT} = 1040; 1200$	3842524453

### Technical data

Material number	3842524449	3842524450	3842524451	3842524452	3842524453		
<b>Dimensions</b>							
Length of workpiece pallet	$l_{WT}$	mm	400	480	640	800	1040; 1200
<b>Features</b>							
ESD			Yes	Yes	Yes	Yes	Yes
Monitoring range		mm	430	510	670	830	1230

## WT 2 stop



- ▶ Fixed stop in the transverse conveyor
- ▶ Installation location: ST 2 section and BS 2. belt section
- ▶ Not suitable for mounting on ST 2/...-H or BS 2/...-H sections

The WT 2 stop is used as a fixed stop for workpiece pallets entering a longitudinal section from a transverse section.

### Delivery notes

#### Scope of delivery

- ▶ Including fastening material for installation between two ST 2 conveyor sections or BS 2 belt sections.

#### Condition on delivery

- ▶ Not assembled

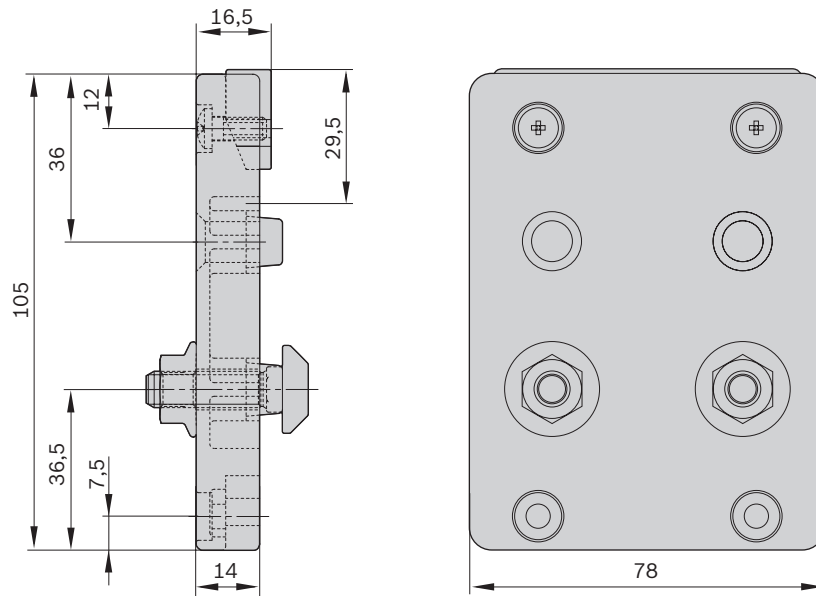
### Ordering information

Product designation	Material number
WT 2 stop	3842519717

### Technical data

Material number	3842519717		
<b>Load</b>			
Max. total workpiece pallet weight	$m_G$	kg	30
<b>Features</b>			
ESD	Yes		
Material specification	PA66		

**Dimensions**



00125246