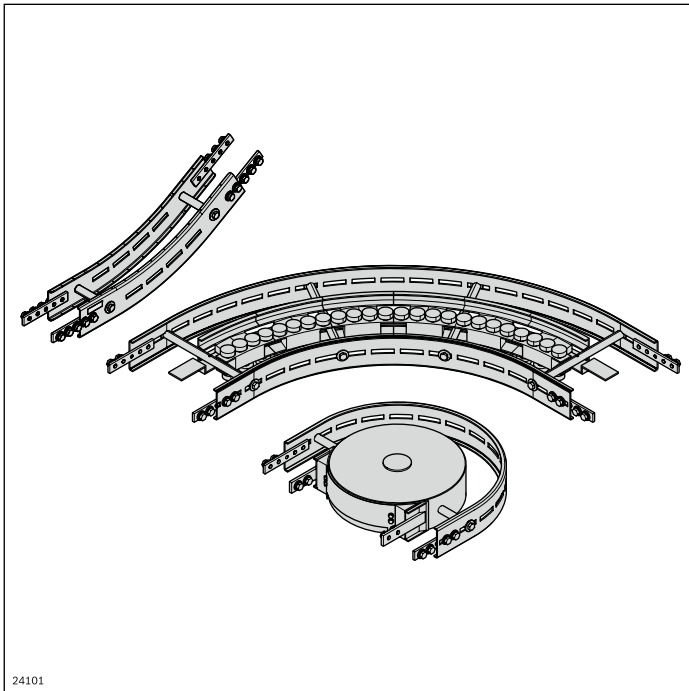



Curves STS

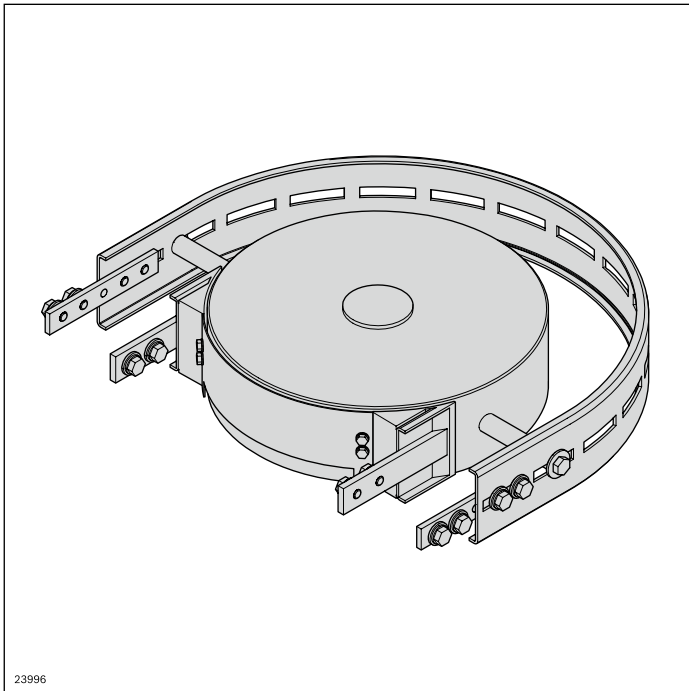


- ▶ Components subject to constant friction feature FDA-compliant materials
- ▶ Easy to clean thanks to ample draining surfaces
- ▶ Capable of accumulation
- ▶ Reduced friction on curve wheels and patented roller curves to minimize wear, meaning the implementation of longer sections
- ▶ Stainless steel ball bearings sealed on both sides with FDA-compliant special grease in curve wheels and patented roller curves

Longer service life and reduced downtimes
thanks to low-friction curve technology

	Curve wheel STS	136
	Roller curve horizontal STS	138
	Vertical curve STS	140

Curve wheel STS



The curve wheel provides a horizontal direction change for the chain. It enables low-friction direction changes with very small radii.

For attachment options, see the matrix on page 289

- Size: 65, 90, 120
- For deflection angles, see table
- Other deflection angles on request
- Suitable chain types: all

Note: High-pressure cleaning of the ball bearing areas is not permitted.

- ▶ Easy-to-clean design
- ▶ Stainless steel ball bearings, with sealing on both sides and FDA-compliant lubrication
- ▶ Surfaces in contact with chain made of FDA-compliant materials

- ▶ No interfering contours above chain plate height
- ▶ Can be used horizontally and vertically (for wedge conveyors)

Scope of delivery:

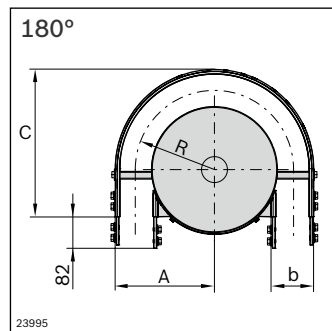
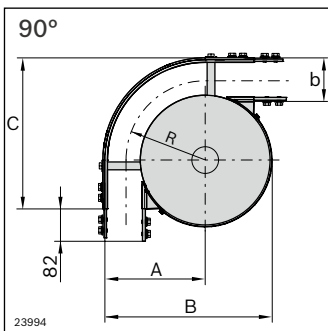
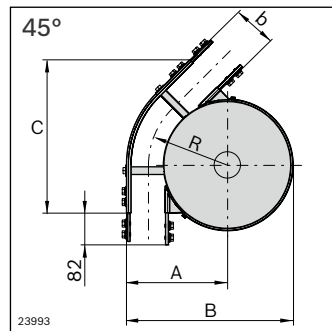
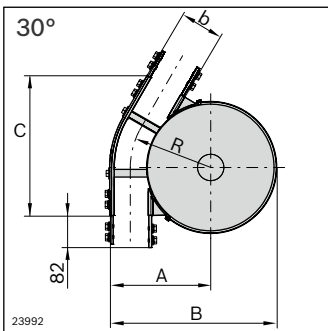
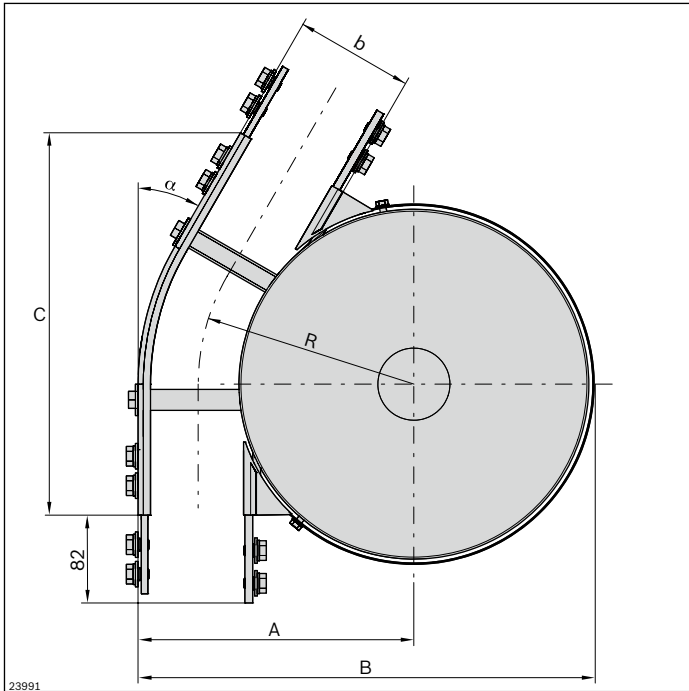
Incl. fastening material for mounting to STS section profiles

Condition on delivery:

Fully assembled

Material:

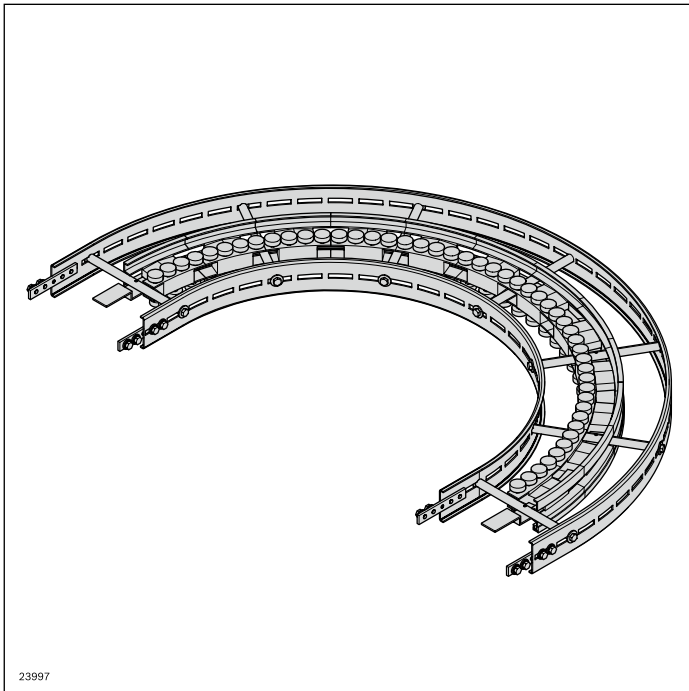
- Housing: Stainless steel, 1.4301
- Chain wheel: PA; white
- Ball bearings: Stainless steel/ FDA



Curve wheel STS	α (°)	No.
VFplus 65	30	3 842 547 111
	45	3 842 547 112
	90	3 842 547 113
	180	3 842 547 114
VFplus 90	30	3 842 547 115
	45	3 842 547 116
	90	3 842 547 117
	180	3 842 547 118
VFplus 120	30	3 842 547 119
	45	3 842 547 120
	90	3 842 547 121
	180	3 842 547 122

b (mm)	α (°)	R (mm)	A (mm)	B (mm)	C (mm)
65	30	153.0	185.5	322.5	279.4
	45	153.0	185.5	322.5	301.9
	90	153.0	185.5	322.5	285.5
	180	153.0	185.5	–	287.5
90	30	165.5	210.5	347.5	291.9
	45	165.5	210.5	347.5	319.6
	90	165.5	210.5	347.5	310.5
	180	165.5	210.5	–	310.5
120	30	180.5	240.5	377.5	306.9
	45	180.5	240.5	377.5	340.8
	90	180.5	240.5	377.5	340.5
	180	180.5	240.5	–	340.5

Roller curve horizontal STS



The low-friction roller curve provides a horizontal change in direction for the chain. Polymer-coated roller elements with ball bearings enable longer conveyor sections. The service life of the chain is increased and system costs reduced. For attachment options and length determination of the support profile, see matrix on page 289

- Size: 160, 240, 320
- See table for the deflection angles, more deflection angles available on request
- Deflection radius: R500
- Suitable chain types: all
- Version with open section profiles

Note: High-pressure cleaning of the ball bearing areas is not permitted.

- ▶ Patented roller elements for low-friction, quieter changes in chain direction
- ▶ Easy-to-clean design
- ▶ Stainless steel ball bearings, with sealing on both sides and FDA-compliant lubrication

- ▶ Surfaces in contact with chain made of FDA-compliant materials

Required accessories:

Slide rail: Length calculation, see page 278

Scope of delivery:

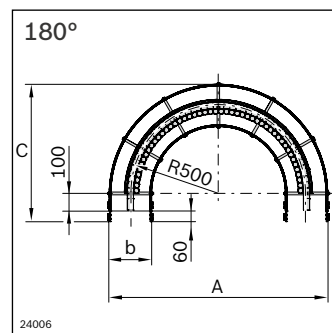
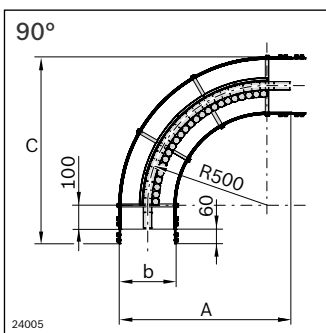
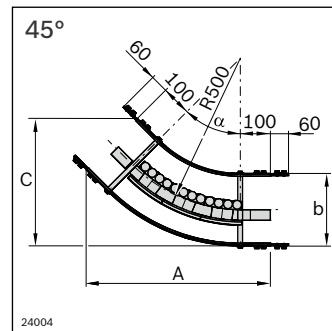
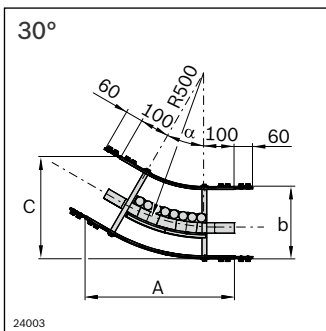
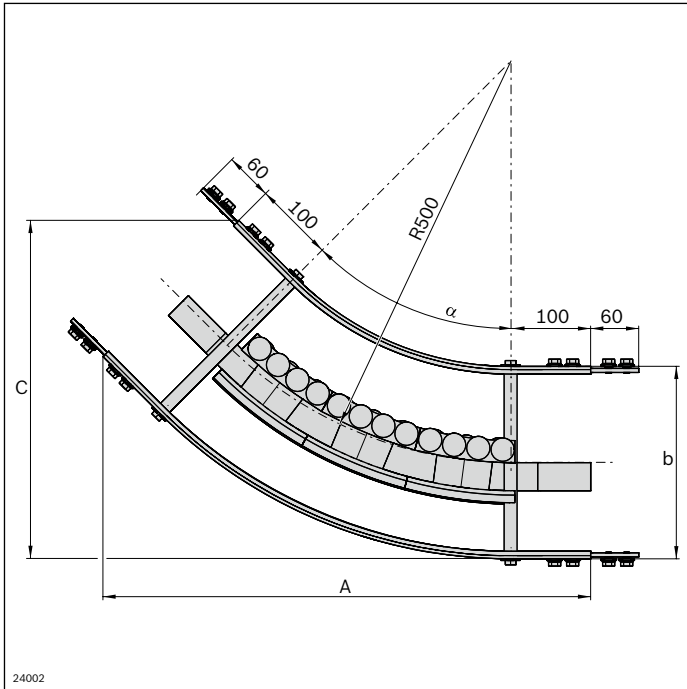
Incl. fastening material for mounting to STS section profiles

Condition on delivery:

Fully assembled

Material:

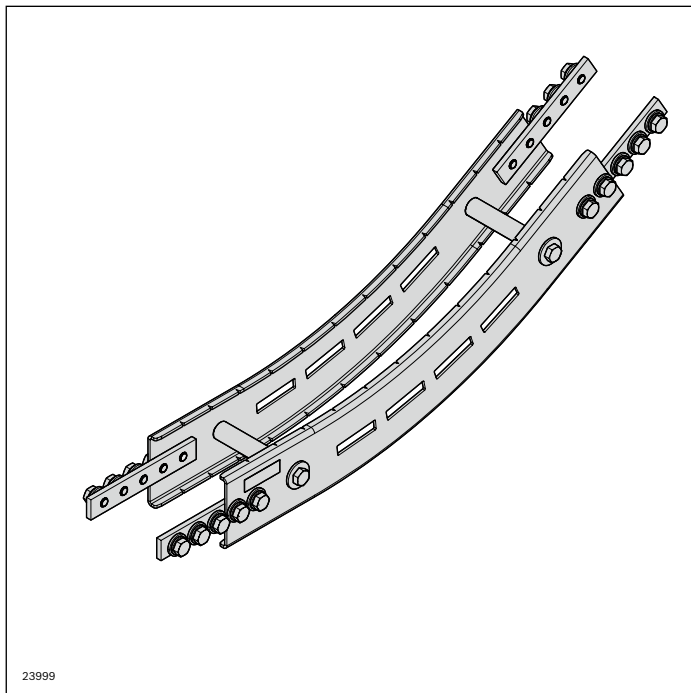
- Profile: Stainless steel, 1.4301
- Roller carrier: PA66
- Ball bearings: Stainless steel/ FDA
- Connector: Stainless steel, 1.4301
- Rollers: PA



Roller curve STS	α (°)	No.
VFplus 160	30	3 842 547 123
	45	3 842 547 124
	90	3 842 547 125
	180	3 842 547 126
VFplus 240	30	3 842 547 127
	45	3 842 547 128
	90	3 842 547 129
	180	3 842 547 130
VFplus 320	30	3 842 547 131
	45	3 842 547 132
	90	3 842 547 133
	180	3 842 547 134

b (mm)	α (°)	A (mm)	C (mm)
160	30	476.6	266.3
	45	580.8	353.7
	90	680.0	680.0
	180	1160.0	680.0
240	30	496.6	340.9
	45	609.1	422.0
	90	720.0	720.0
	180	1240.0	720.0
320	30	516.6	415.6
	45	637.4	490.3
	90	760.0	760.0
	180	1320.0	760.0

Vertical curve STS



The vertical curve is used for the transition from a horizontal conveyor section to an ascending section and vice versa. The chain tensile force is increased through the ensuing friction.

A vertical curve of 5° is recommended for the infeed and outfeed on the wedge conveyor, especially with small products.

For attachment options, see the matrix on page 289

- Size: all
- Deflection angles and radii see table, other deflection angles and radii on request
- Suitable chain types: all
- Version with open section profiles
- Requires the use of the Advanced or Premium slide rails

Required accessories:

Slide rail: Length calculation, see page 278

Scope of delivery:

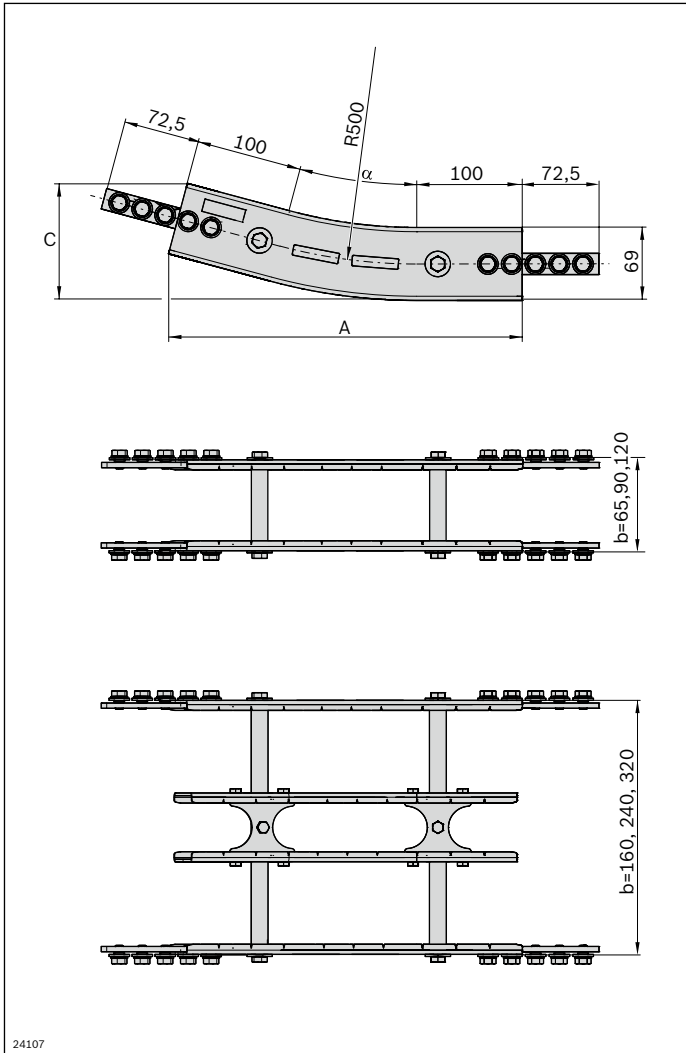
Incl. fastening material for mounting to STS section profiles

Condition on delivery:

Fully assembled

Material:

- Profile: Stainless steel, 1.4301
- Connector: Stainless steel, 1.4301
- Support profile from size 160: Stainless steel, 1.4301



Vertical curve STS	α (°)	No.
VFplus 65	5	3 842 547 135
	15	3 842 547 136
	30	3 842 547 137
	45	3 842 547 138
VFplus 90	5	3 842 547 139
	15	3 842 547 140
	30	3 842 547 141
	45	3 842 547 142
VFplus 120	5	3 842 547 143
	15	3 842 547 144
	30	3 842 547 145
	45	3 842 547 146
VFplus 160	5	3 842 547 147
	15	3 842 547 148
	30	3 842 547 149
	45	3 842 547 150
VFplus 240	5	3 842 547 151
	15	3 842 547 152
	30	3 842 547 153
VFplus 320	5	3 842 547 154
	15	3 842 547 155
	30	3 842 547 156

b (mm)	α (°)	R (mm)	A (mm)	C (mm)
65-320	5	500	246.2	79.5
	15	500	334.9	110.7
	30	500	453.9	181.4
65-160	45	500	548.7	276.1

