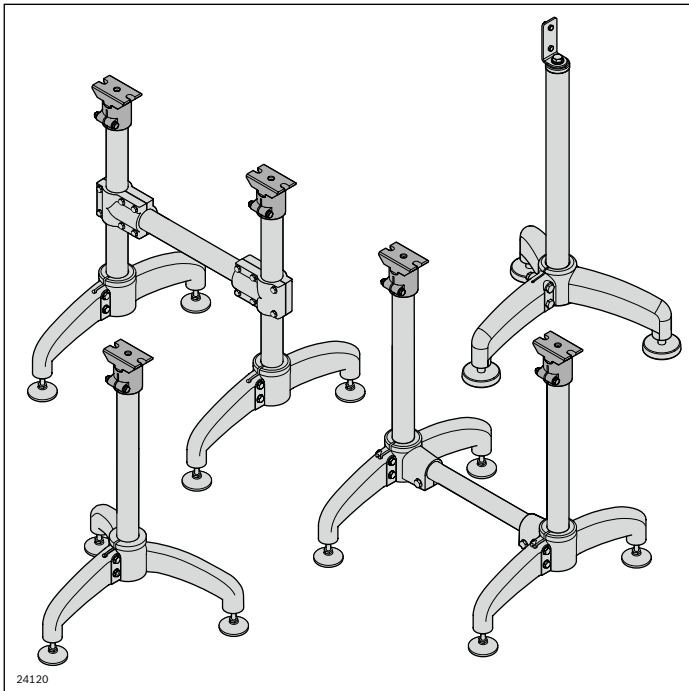


STS leg sets



- ▶ Few screwed connections
- ▶ Easy to clean thanks to ample draining surfaces
- ▶ Bore for the easy attachment of drop trays, protective devices, etc.
- ▶ Supports can also be used in conjunction with AL sections

24120

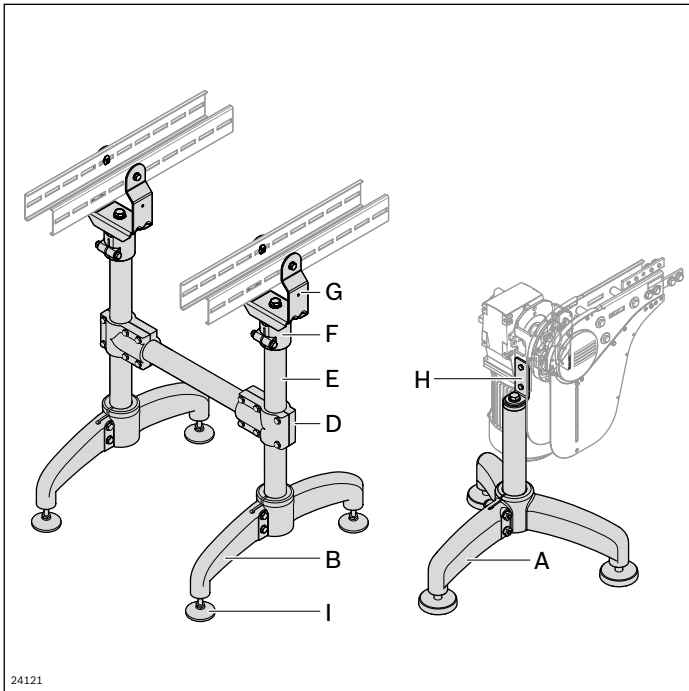
Fast, simple leg set adjustment thanks to clever product details



STS leg sets

168

STS leg sets



- ▶ For dowelling the leveling feet (**I**), drill guides are available on the underside
- ▶ Easy-to-clean design with draining surfaces

Scope of delivery:
Incl. fastening material

Material:

- **A, B, C, D, F:** PA
- **E, G:** Stainless steel
- **H:** Stainless steel with PA
- **I:** STS with PA

The chain conveyor is placed on the ground by means of supports and fastened.

The support is constructed from single parts:

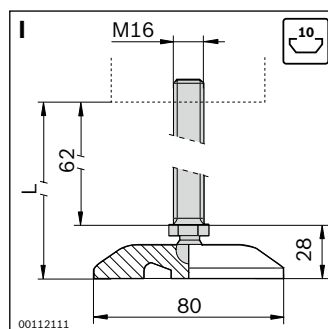
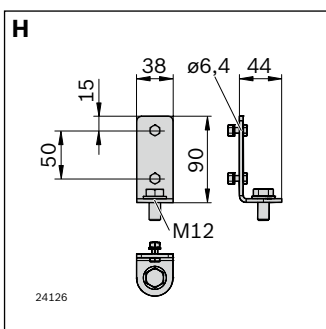
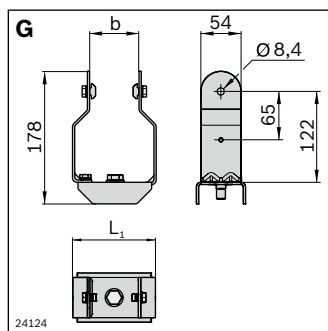
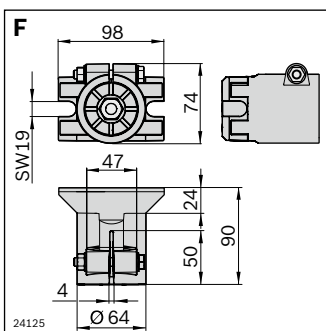
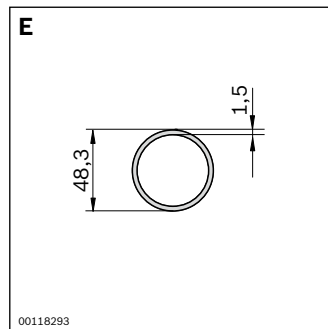
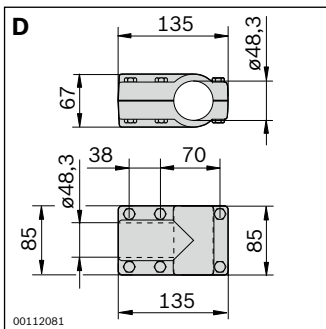
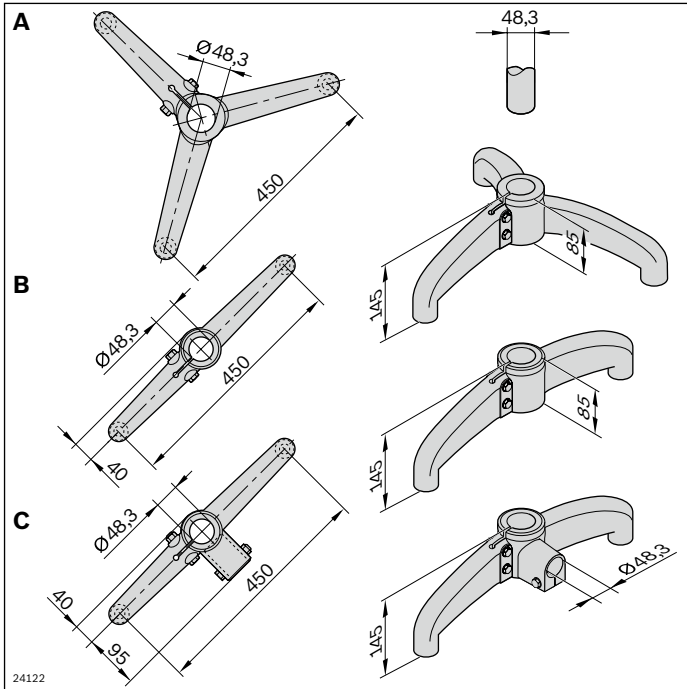
Foot in three different versions (**A, B, C**)

Tube (**E**), flange(**F**) for mounting the holder and holder (**G**) for mounting the section profile.

It is imperative that a separate holder (**H**) is used to support the motors /drives.

- Depending on the speed, accumulation behavior and weight, the supports are to be fixed at a distance of approx. 2 ... 3 m
- The leg sets for the aluminum system (see pages 110, 114) can also be used on the stainless steel system. The holder (**G**) can be connected directly to a strut profile 60x60 and a S12x30-T50 (MGE catalog **3 842 530 236**)
- Holder (**H**) can only be used for the STS system
- Holder (**G**) can also be used for ascending and descending conveyor sections (up to 28°, depending on the return chain)
- Holder (**G**) with drill guide to fasten drip trays, trap guards for return chains, etc., also suitable for section profile 60x60
- Due to stability reasons, cross reinforcements are absolutely necessary when using feet B and C

Condition on delivery:
Not assembled



Foot STS	No.
Tripod (A)	1 3 842 533 307
Bipod (B)	1 3 842 533 308
Two-leg with flange (C)	1 3 842 533 309

Cross connector (D)	No.
VFplus 80x80, black	1 3 842 533 306

Tube D48.3 x 1.5 STS (E)	L (mm)	No.
6 pcs	3000	3 842 533 901
1 pcs	200 ... 3000	3 842 993 308/L

Flange VFplus STS (F)	No.
VFplus support	Set 3 842 547 892

Holder STS (G)	b (mm)	L ₁ (mm)	No.
VFplus 65 support STS	65	111	Set 3 842 546 658
VFplus 90 support STS	90	136	Set 3 842 546 659
VFplus 120 support STS	120	166	Set 3 842 546 660
VFplus 160 support STS	160	206	Set 3 842 546 661
VFplus 240 support STS	240	286	Set 3 842 546 662
VFplus 320 support STS	320	366	Set 3 842 546 663

STS motor leg set holder (H)	No.
VFplus	Set 3 842 549 365

Leveling foot (I)	No.
Adjustable M16x95	3 842 533 310