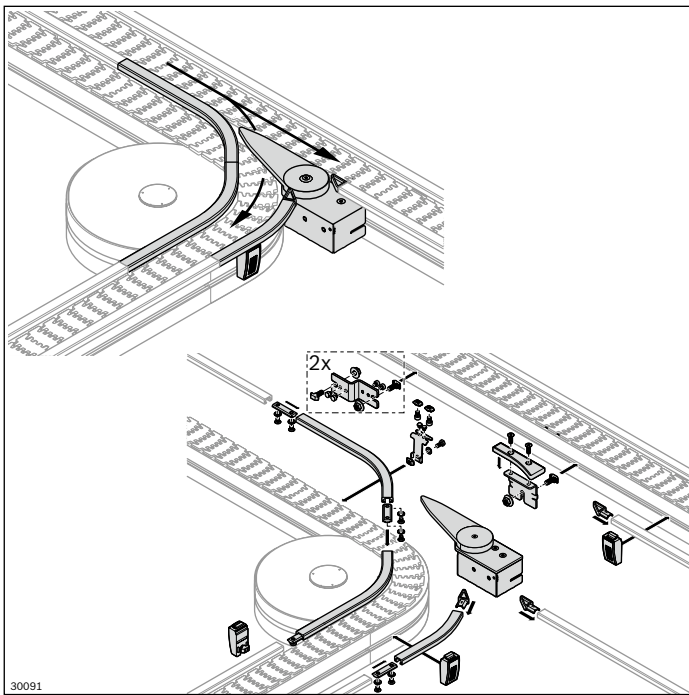


## Diverter



For optionally changing tracks between different, curving conveyor sections

- Complete assembly kit to install on existing sections or curve wheels
- The support enables the workpiece pallet to move safely over the section gap with no danger of tipping.  
No accumulation operation against the diverter blade!

Required accessories:

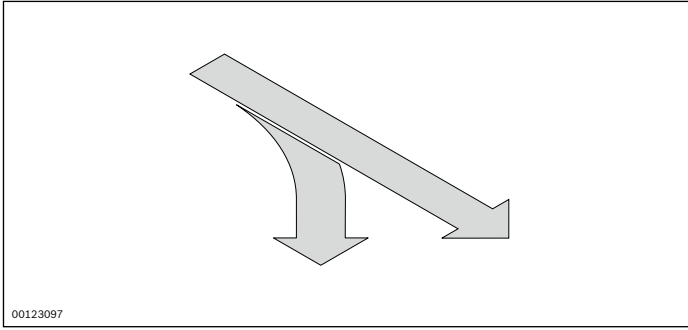
2 G 1/8" throttle non-return valves (not included in the scope of delivery)

Scope of delivery:

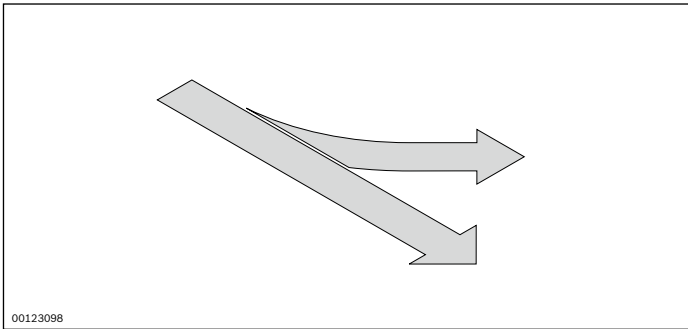
Kit incl. Fastening parts (as shown)

Material:

Diverter blade, gliding surface support: PA; black

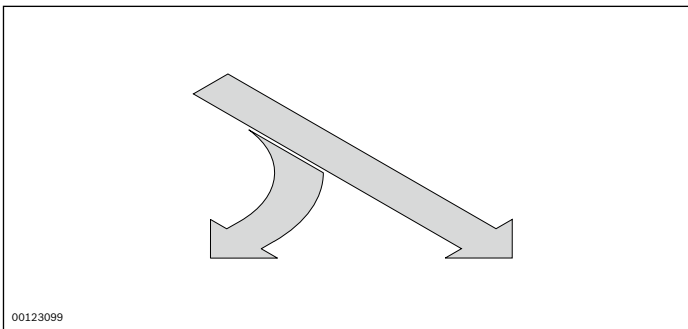


<b>45° diverter, right</b>	<b>No.</b>
<i>VFplus 65</i>	<b>3 842 551 104</b>
<i>VFplus 90</i>	<b>3 842 551 090</b>

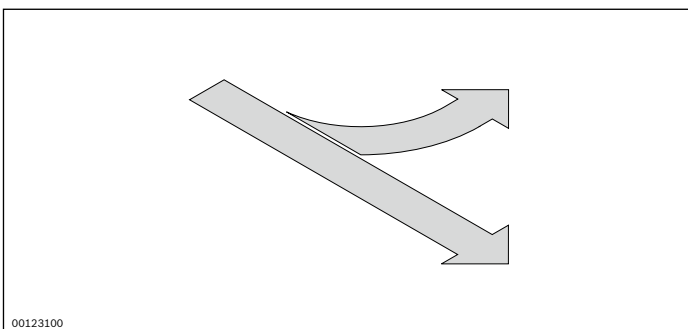


<b>45° diverter, left</b>	<b>No.</b>
<i>VFplus 65</i>	<b>3 842 551 105</b>
<i>VFplus 90</i>	<b>3 842 551 091</b>

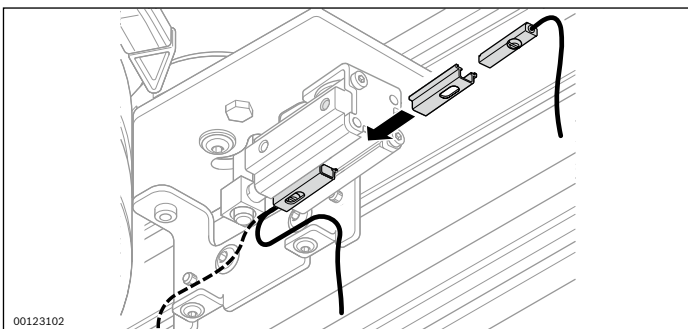
8



<b>90° diverter, right</b>	<b>No.</b>
<i>VFplus 65</i>	<b>3 842 551 111</b>
<i>VFplus 90</i>	<b>3 842 551 110</b>

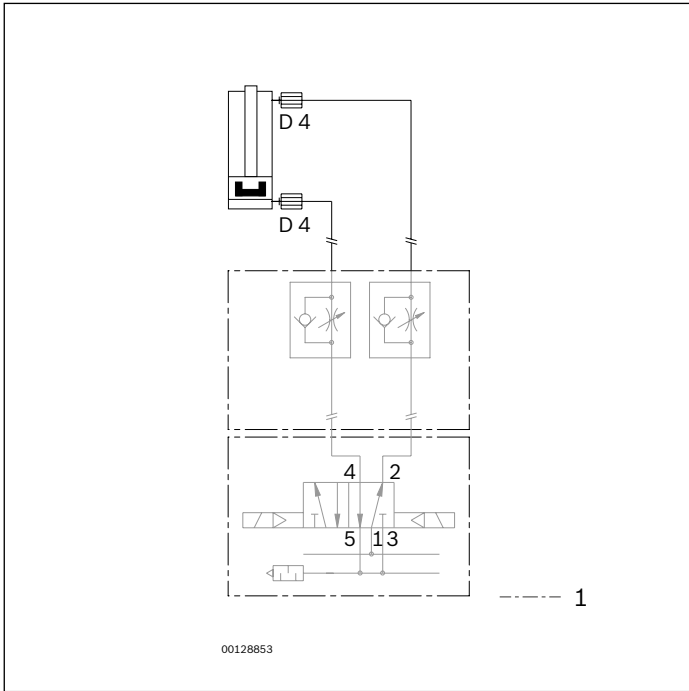


<b>90° diverter, left</b>	<b>No.</b>
<i>VFplus 65</i>	<b>3 842 551 121</b>
<i>VFplus 90</i>	<b>3 842 551 100</b>

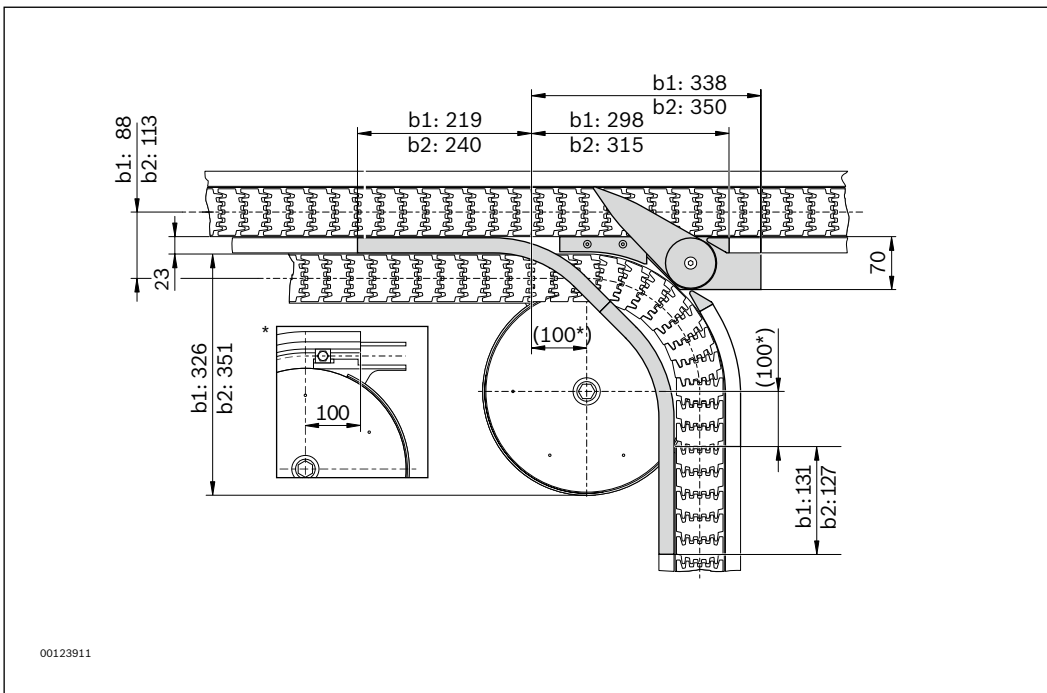
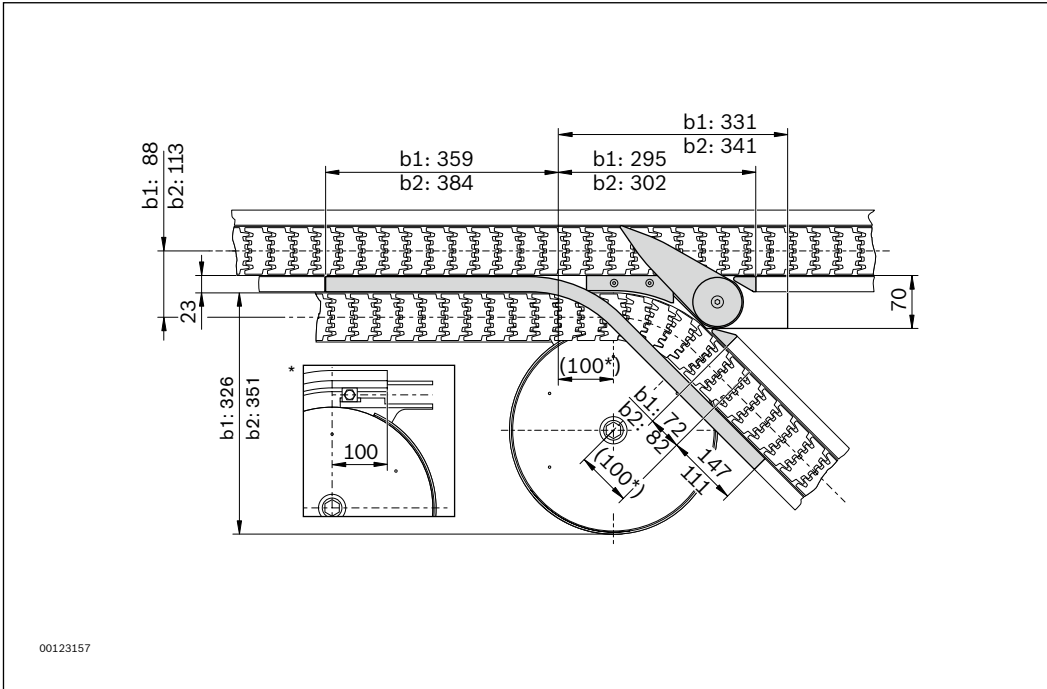


<b>Position sensor diverter</b>	<b>No.</b>
	<b>3 842 535 150</b>

**Circuit diagram**



1 Not included in scope of delivery



b = size  
 b1 = 65; b2 = 90