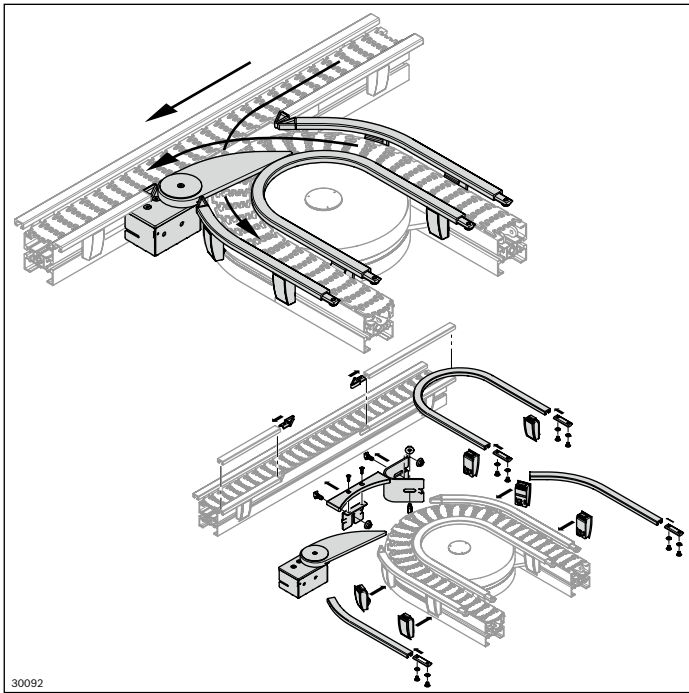


Cross-diverter



The cross-diverter combines the functions of junctions and diverters in a compact construction.

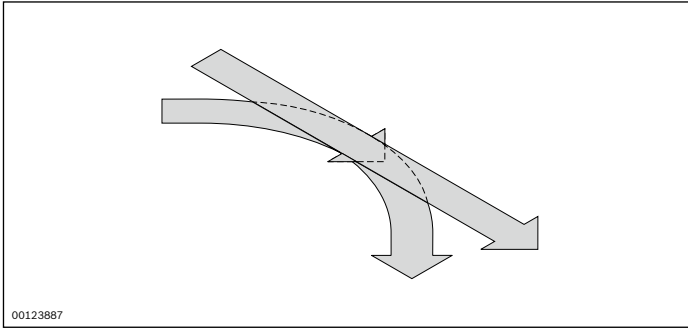
- Complete assembly kit to install on existing sections or curve wheels
- For problem-free section transfer, the center of gravity for the load must be in the center of the optimal range (see page 222)
- Permitted speed range: min. 4 m/min, max. 18 m/min
- The support enables the workpiece pallet to move safely over the section gap with no danger of tipping.
No accumulation operation against the diverter blade!

Scope of delivery:

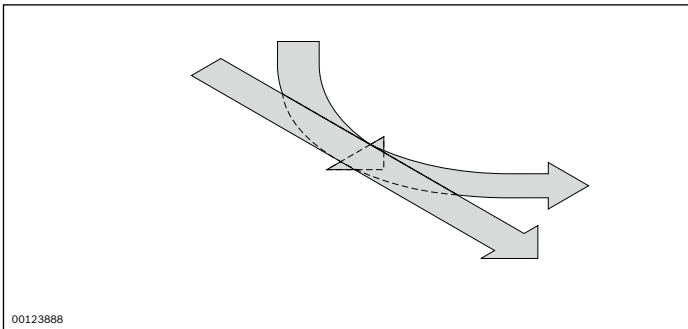
Kit incl. fastening parts (as shown)

Material:

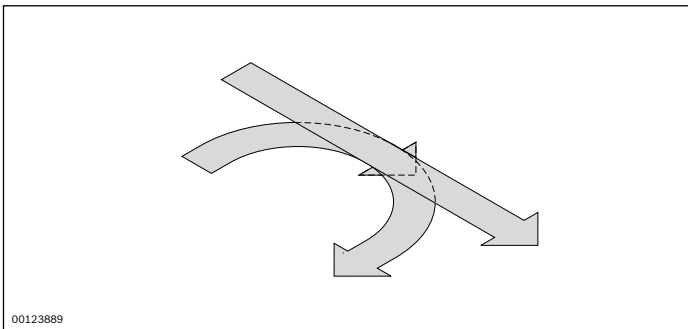
Diverter blade, gliding surface support: PA; black



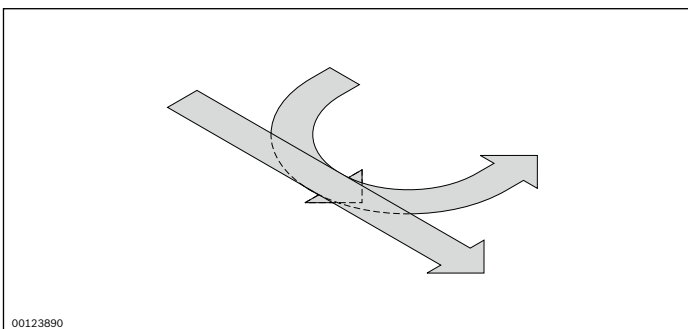
45° cross-diverter, right	No.
<i>VFplus 65</i>	3 842 551 086
<i>VFplus 90</i>	3 842 551 084



45° cross-diverter, left	No.
<i>VFplus 65</i>	3 842 551 140
<i>VFplus 90</i>	3 842 551 139

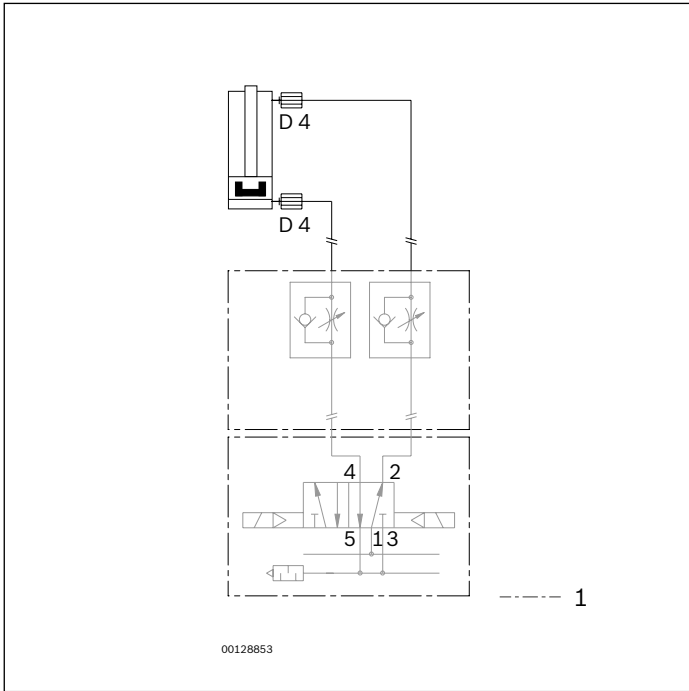


90° cross-diverter, right	No.
<i>VFplus 65</i>	3 842 551 108
<i>VFplus 90</i>	3 842 551 074

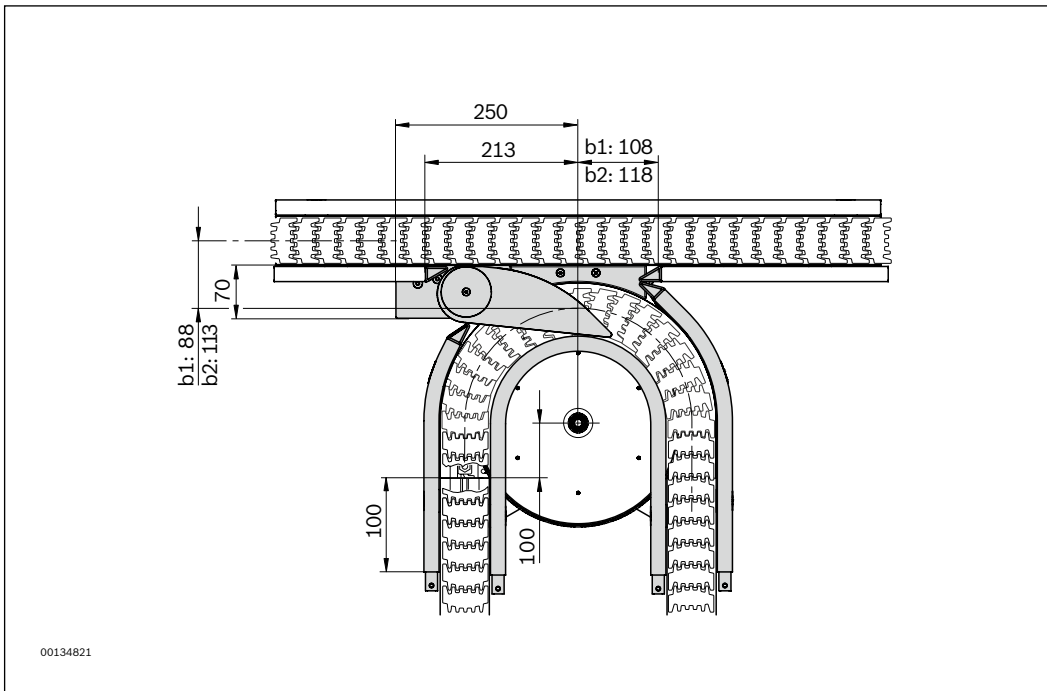
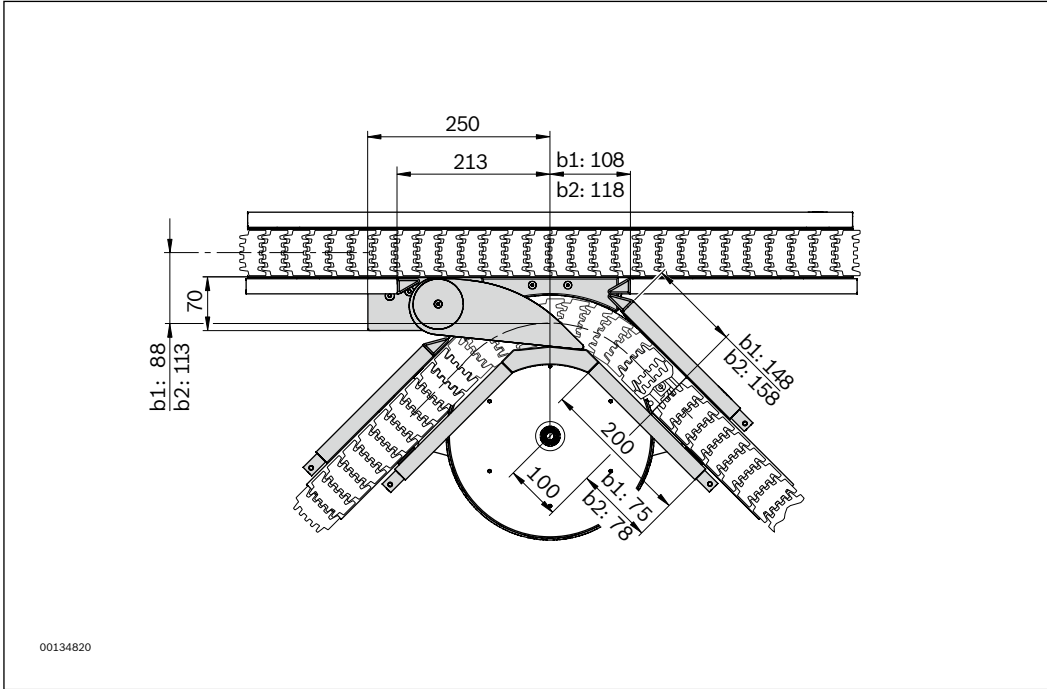


90° cross-diverter, left	No.
<i>VFplus 65</i>	3 842 551 141
<i>VFplus 90</i>	3 842 551 138

Circuit diagram



1 Not included in scope of delivery



b = size
 b1 = 65; b2 = 90