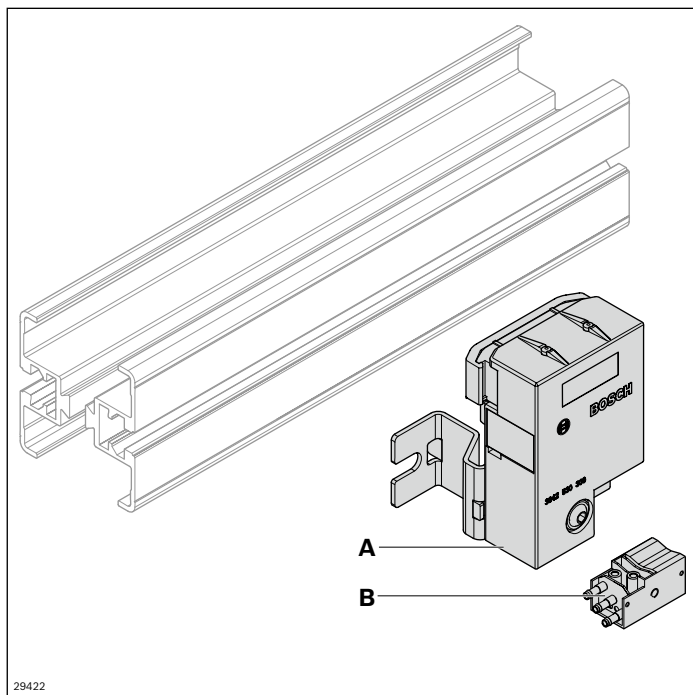


## Rocker WT system



The rocker can be used for area monitoring, regulating accumulation pressure, and workpiece pallet recognition. A query can be either made electrically with a proximity switch or pneumatically to convert the shutter actuation directly into a pneumatic signal. Simple, purely pneumatic accumulation pressure regulation can be established in conjunction with a stop gate VE 2/VF.

- Monitoring range: 60 mm

- ▶ The rocker does not protrude beyond the top edge of the workpiece pallet
- ▶ A sideways query on the workpiece pallet plate ensures that the lateral guide profiles are not interrupted

### Accessories:

- Pneumatic cylinder switch **(B)** (3 842 532 151)
- 12 mm proximity switch, round with switching distance  $S_N > 4$  mm

### Scope of delivery:

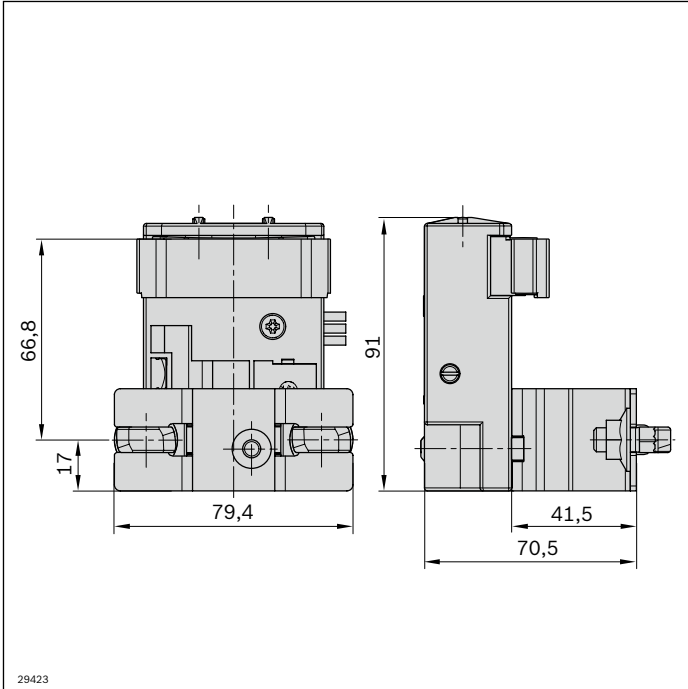
Set incl. fastening material

### Condition on delivery:

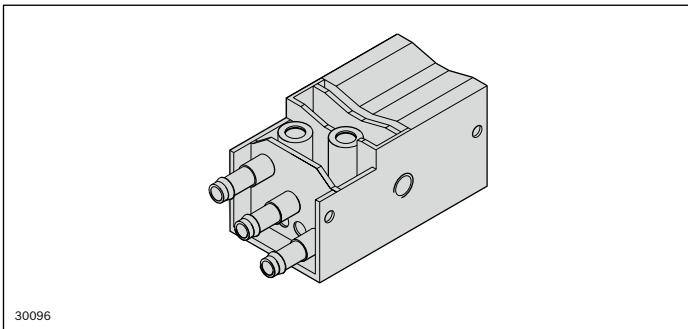
Partially assembled

### Material:

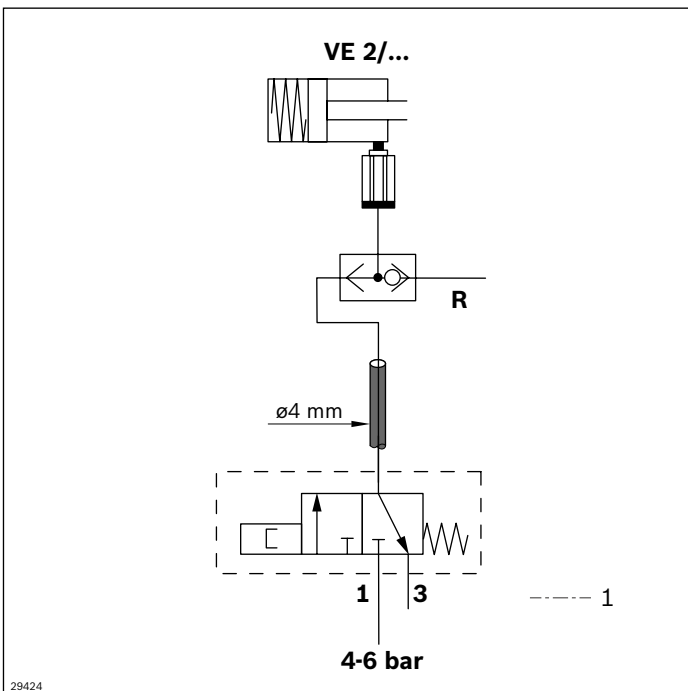
Stainless steel, PA



<b>Rocker</b>		<b>No.</b>
<b>A</b>	1 pcs	<b>3 842 547 464</b>



<b>Pneumatic cylinder switch</b>		<b>No.</b>
<b>B</b>	1 pcs	<b>3 842 532 151</b>



**Circuit diagram**

1 Not included in scope of delivery