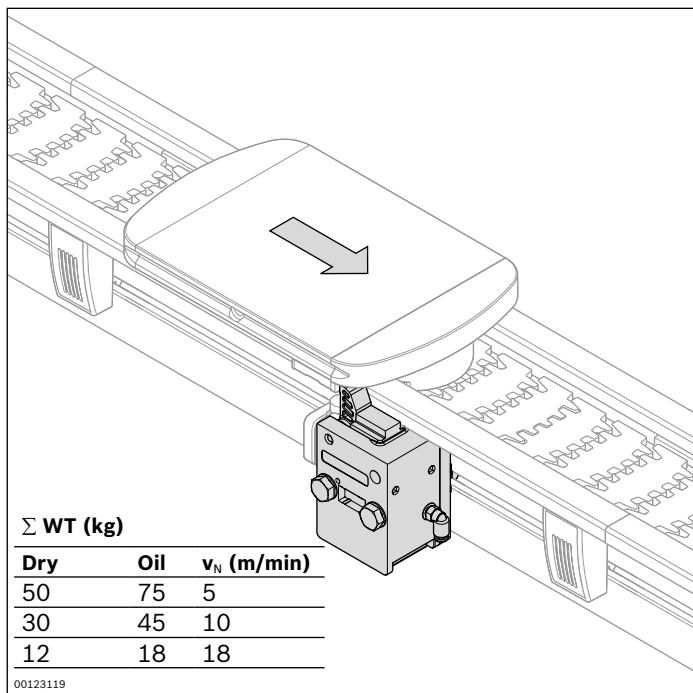


Stop gate VE 2/VF



Stop gate for securely stopping a workpiece pallet

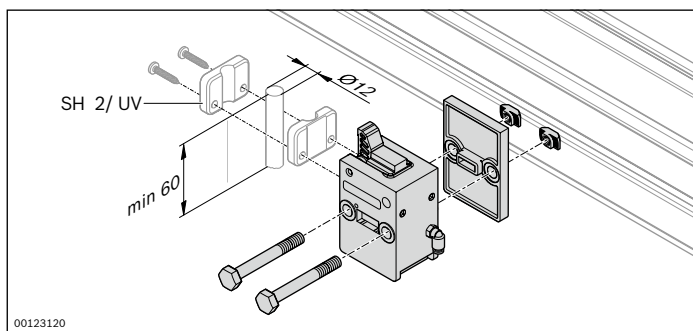
- Suitable for retrofitting without disrupting the lateral guide
- The stop gate can be installed in any position
- Switch bracket for installation on stop gate see page 232, max. accumulation load 50 kg

Scope of delivery:

Incl. fastening parts (as shown)

Material:

- Stop gate: PA, black
- Fastening parts: Galvanized steel

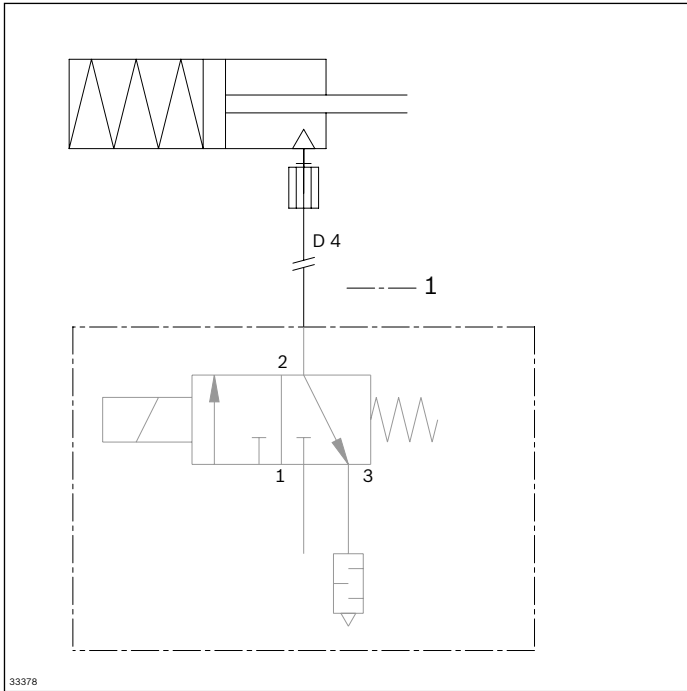


VE 2/VF stop gate

No.

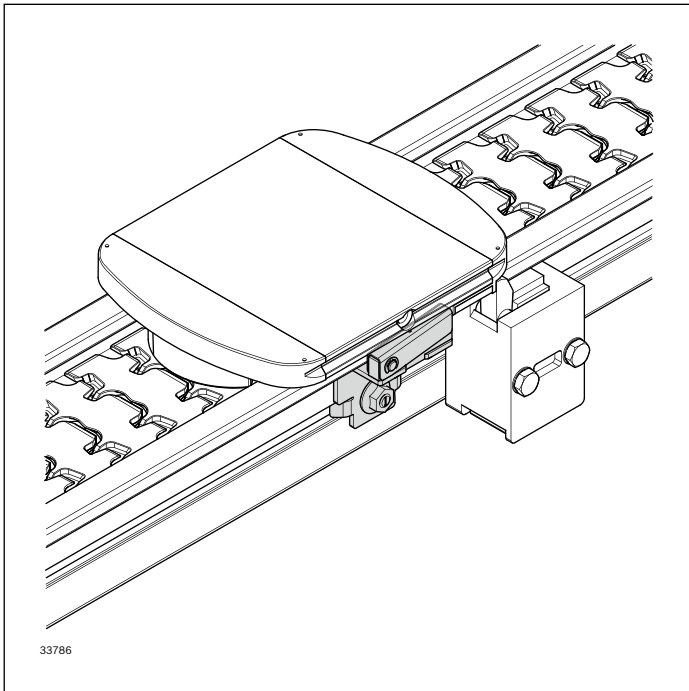
3 842 528 852

Circuit diagram



1 Not included in scope of delivery

Return stop WT



The return stop prevents the VarioFlow *plus* workpiece pallet from rebounding from the stop gate or prevents a backward movement of the workpiece pallet when the chain is turned off and released.

- Additional WT load max. 8 kg
- The return stop is attached behind the WT stop surface.

- ▶ Can be attached both left and right on the section profile
- ▶ Simple and low-cost construction

- ▶ Non-rotating
- ▶ Also suitable for retrofitting without disrupting the lateral guide

Scope of delivery:

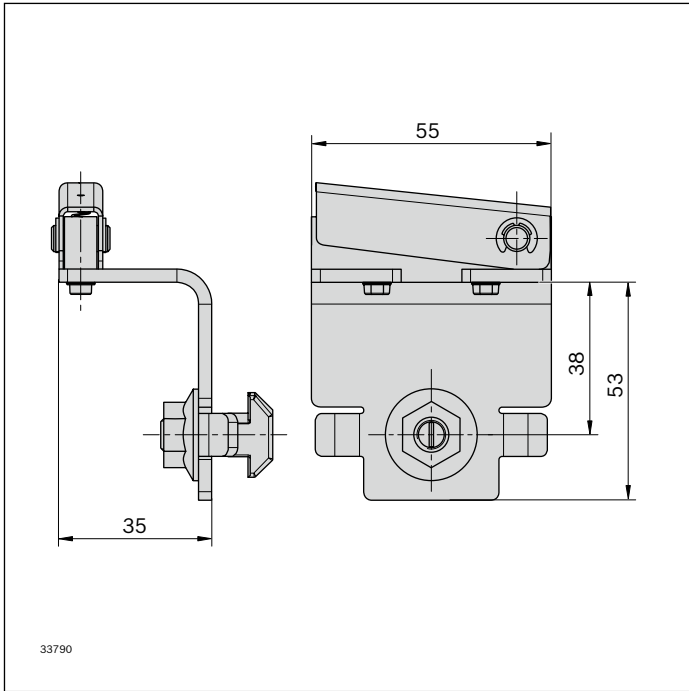
Incl. fastening material

Condition on delivery:

Fully assembled

Material:

Non-rusting steel 1.4301, galvanized steel, PA



Return stop	No.
	3 842 553 090