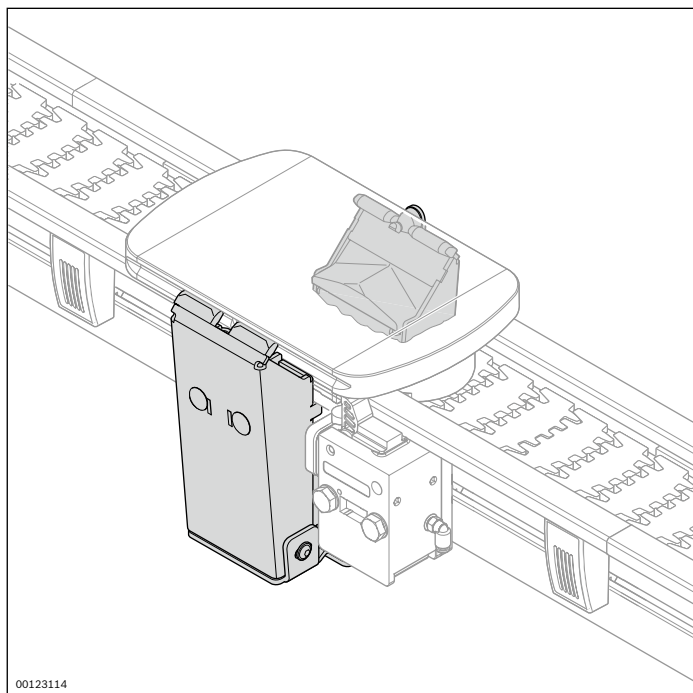


## Positioning unit



### Required accessories:

2 G 1/8" throttle non-return valves (not included in the scope of delivery)

### Scope of delivery:

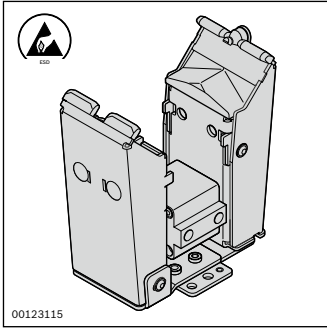
Incl. fastening parts (as shown)

### Material:

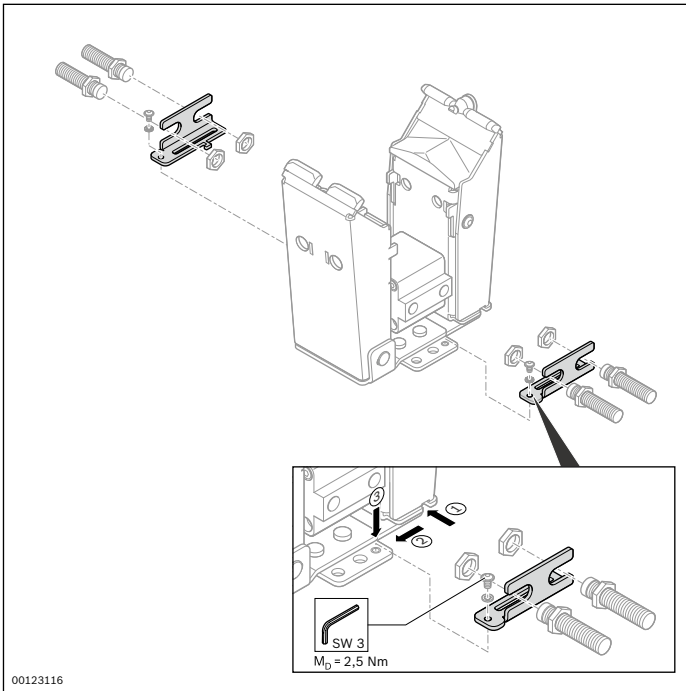
- Positioning unit: stainless steel
- Fastening parts: Galvanized steel
- Cover caps: PA
- Clamping claws: PU

The plier-shaped form of the positioning unit (PE) makes it highly resistant to dirt and shavings and thus suitable for dirty environments. The WT is lifted approx. 1 mm above the transport surface, thus eliminating the load on the conveyor chain during processing.

- Positioning accuracy in the conveying direction:  $\pm 0.15$  mm (across:  $\pm 0.1$  mm, height:  $\pm 0.1$  mm)
- Maximum vertical press force ( $p = 4$  bar): 400 N
- Maximum retention force ( $p = 4$  bar) in the conveying direction: 300 N
- Suitable for retrofitting without disrupting the lateral guide
- The switch bracket can be installed in any position
- Minimum length of the workpiece pallet in order to incorporate the positioning unit:  
Size 65: L = 125 mm  
Size 90: L = 125 mm
- Two positioning units can be combined for workpiece pallets with L > 250 mm. For this, the position mandrel is removed from one of the PEs and the workpiece pallets are fitted with eccentric centering bushings by the customer.
- Position inquiry with assembly kit and 2 M12x1 proximity switches on the housing (proximity switches not in the scope of delivery) or with **3 842 535 150** on the cylinder

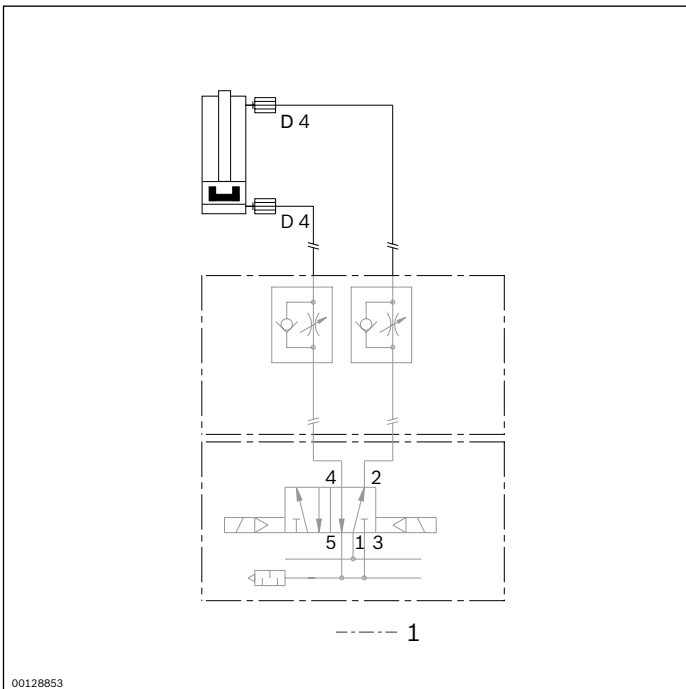


<b>Positioning unit</b>	<b>No.</b>
	<b>3 842 532 762</b>



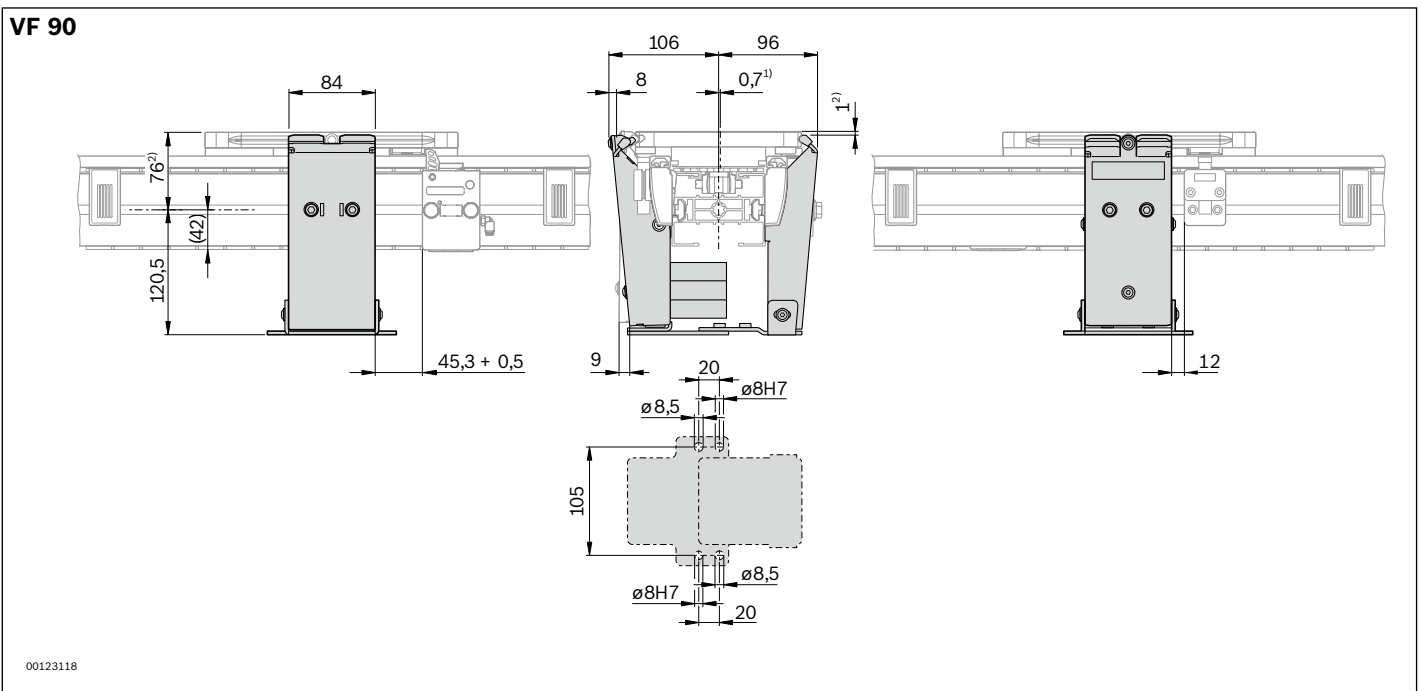
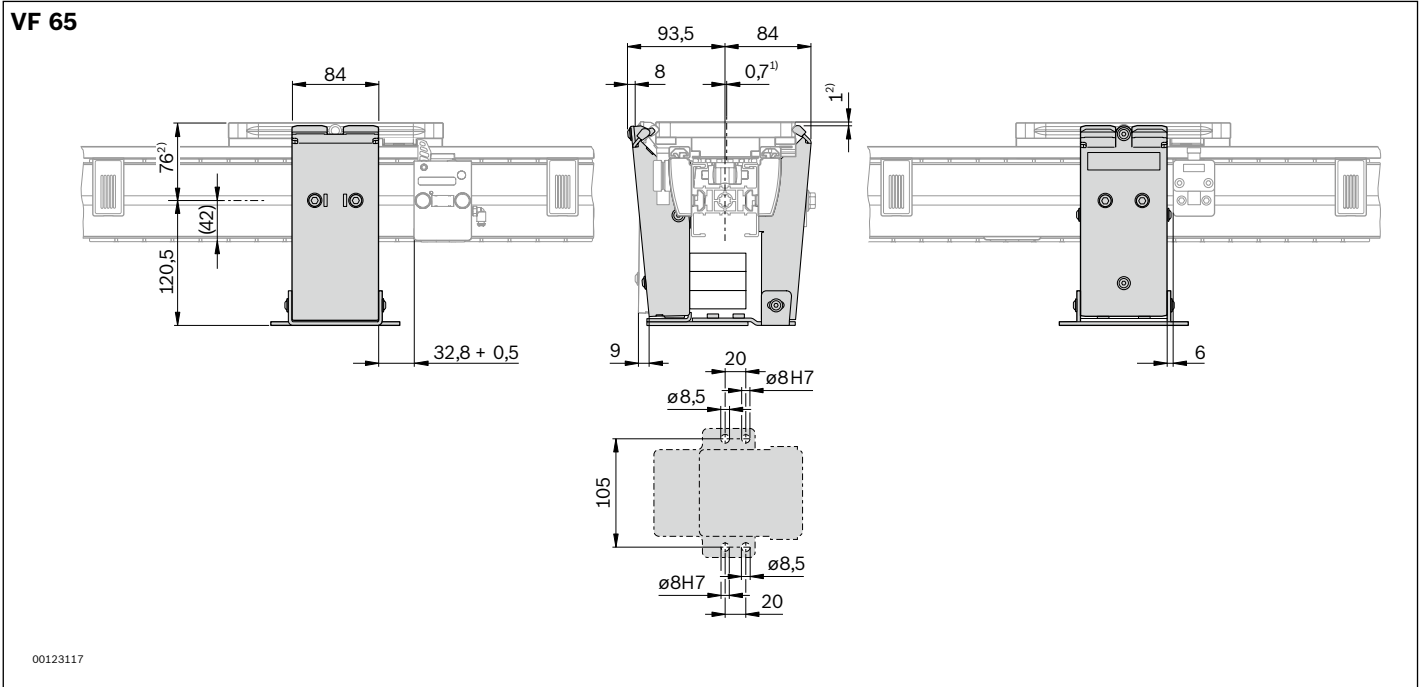
<b>Position monitoring kit</b>	<b>No.</b>
	<b>3 842 535 801</b>

8



**Circuit diagram**

1 Not included in scope of delivery



<sup>1)</sup> Center offset of the workpiece pallet when it is positioned

<sup>2)</sup> Height offset of the workpiece pallet when it is positioned.