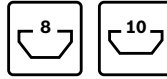
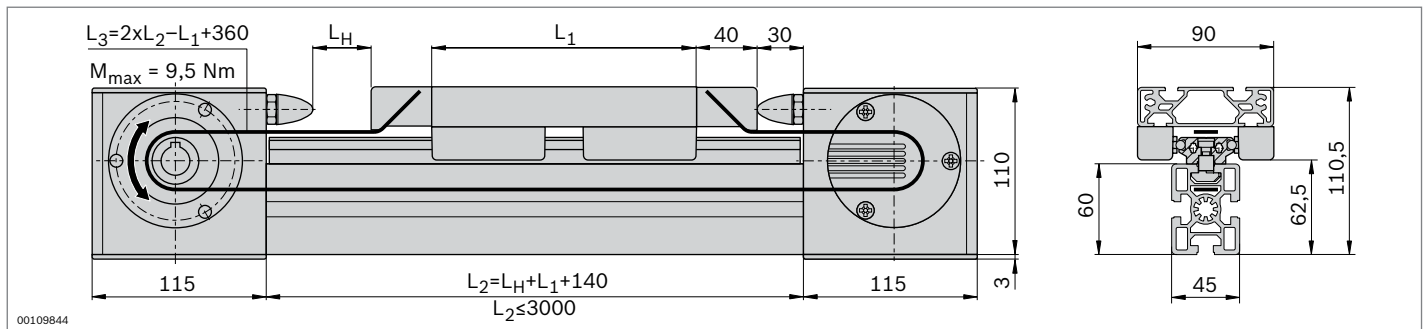


### Cam roller guide LF6S – complete axis



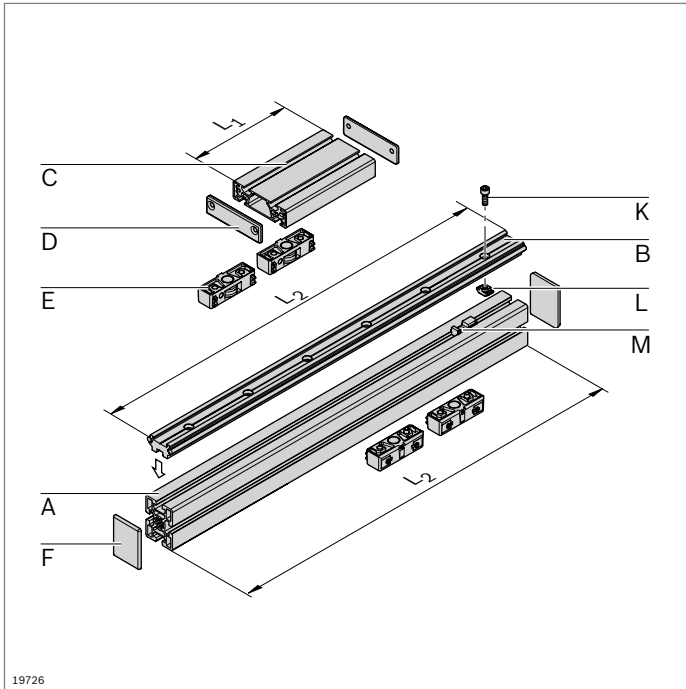
- ▶ Fully assembled cam roller guide
- ▶ Stroke and trolley length can be individually selected
- ▶ Rail profile screwed onto strut profile 45x60
- ▶ Incl. toothed belt drive; additional notes on the drive concept (p. 13-44)



### Technical data

See pages 13-57 for notes on layout and drive

Complete axis LF6S	$L_H / L_1$ (mm)	No.
	$L_1 + 80 \leq L_H \leq 2710$	3 842 998 495 / $L_H / L_1$
	$150 \leq L_1 \leq 1000$	



19726

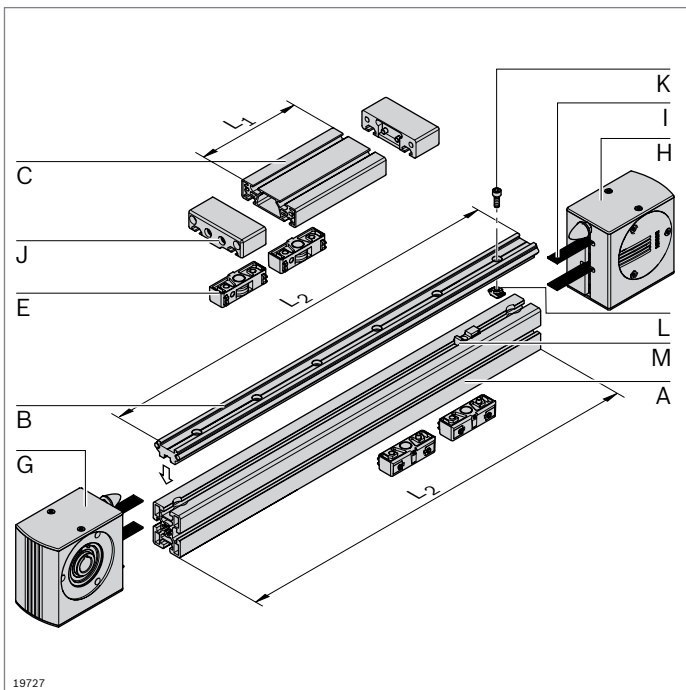
## Cam roller guide LF6S – components

- Components for the individual assembly of cam roller guides, with or without drive

### Parts list for cam roller guide LF6S without drive

Component	No.	Qty.	Page
<b>A</b> Profile 45x60	3 842 990 570 / $L_2$	1	2-41
<b>B</b> Guide profile LF6S	3 842 993 966 / $L_2$	1	13-8
<b>C</b> Trolley profile LF6S	3 842 993 061 / $L_1$	1	13-8
<b>D</b> Cover cap LF6S	3 842 535 645	2	13-9
<b>E</b> Guide bearing LF6	3 842 535 662	4	13-8
<b>F</b> Cover cap 45x60	3 842 548 755	2	2-41
<b>K</b> Cylinder bolt M6x20 – DIN7984		n <sup>1)</sup>	
<b>L</b> T-nut M6, 10 mm slot	3 842 530 285	n <sup>1)</sup>	3-4
<b>M</b> Sliding block	3 842 146 877	n <sup>1)</sup>	13-8

<sup>1)</sup> For identification see page 13-8



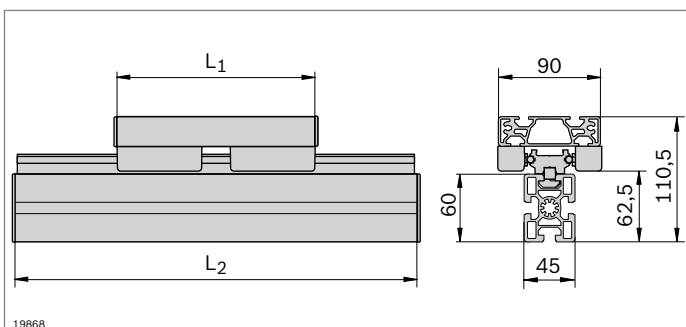
19727

### Parts list for cam roller guide LF6S with drive

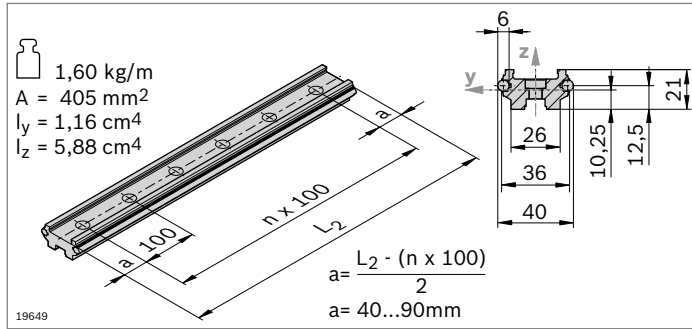
Component	No.	Qty.	Page
<b>A</b> Profile 45x60 LF6S	3 842 993 085 / $L_2$	1	2-41
<b>B</b> Guide profile LF6S	3 842 993 966 / $L_2$	1	13-8
<b>C</b> Trolley profile LF6S	3 842 993 061 / $L_1$	1	13-8
<b>E</b> Guide bearing LF6	3 842 535 662	4	13-8
<b>G</b> Drive head LF6S	3 842 526 410	1	13-9
<b>H</b> Return head LF6S	3 842 526 411	1	13-10
<b>I</b> Toothed belt LF6S	3 842 994 659 / $L_3$ <sup>1)</sup>	1	13-10
<b>J</b> Belt connector LF6S	3 842 535 682	2	13-10
<b>K</b> Cylinder bolt M6x20 – DIN7984		n <sup>2)</sup>	
<b>L</b> T-nut M6, 10 mm slot	3 842 530 285	n <sup>2)</sup>	3-4
<b>M</b> Sliding block	3 842 146 877	n <sup>2)</sup>	13-8

<sup>1)</sup>  $L_3 = 2 \times L_2 - L_1 + 360$

<sup>2)</sup> For identification see page 13-8



19868



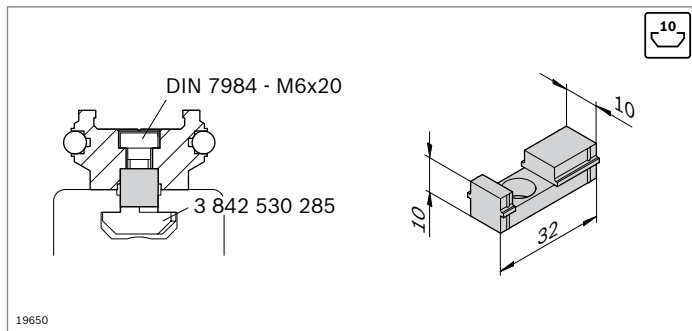
- ▶ Guide profile LF6S with integrated guide rods
- ▶ Installation on MGE strut profiles with 10 mm slot or directly on a flat surface

Guide profile	L <sub>2</sub> (mm)	No.
<b>LF6S</b>	1 pcs 150 ... 3000	<b>3 842 993 966 / L<sub>2</sub></b>
	10 pcs	<b>3000 3 842 539 412</b>

Material: Guide profile: aluminum, anodized  
Guide rod: Solid shaft VA, induction hardened, polished

Condition on delivery: Ungreased guide rods; greasing according to assembly instructions **3 842 527 226**

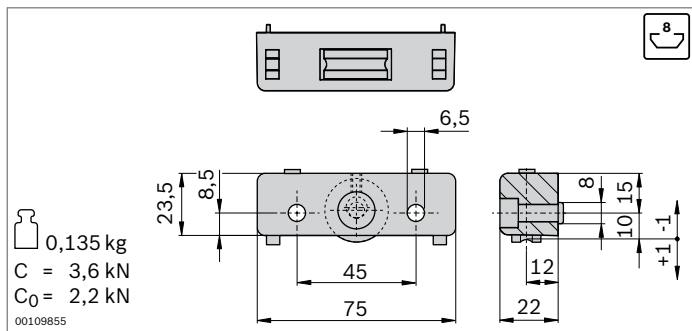
Required accessories: Cylinder bolt DIN 7984 – M6x20  
T-nut M6, 10 mm slot **3 842 530 285** (p. 3-4)



- ▶ Sliding block as a centering aid for mounting the guide profile in a 10 mm profile slot

Sliding block	No.
	50 <b>3 842 146 877</b>

Material: PA; black



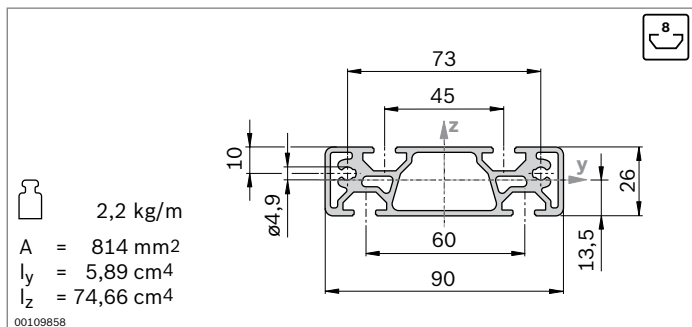
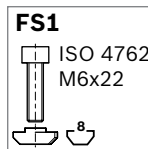
- ▶ Guide bearing for trolley construction
- ▶ Guiding via guide rod
- ▶ Rollers with ball bearings, permanently lubricated
- ▶ Lubricating felts with guide rod lubrication reservoir
- ▶ Play-free roller adjustment via eccentric bolts

Guide bearing	No.	FS
<b>LF6</b>	2 <b>3 842 535 662</b>	2xFS1

Material: Housing: diecast aluminum  
Roller: steel, hardened, polished

Scope of delivery: incl. fastening material (FS)

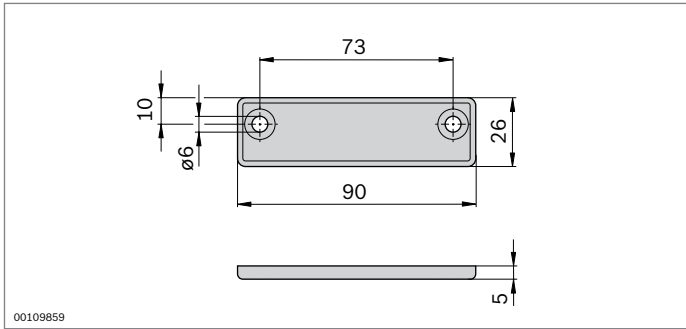
Condition on delivery: lubricating felts ungreased; greasing according to assembly instructions **3 842 527 226**



- ▶ Trolley profile for the construction of trolley LF6S

Trolley profile	L <sub>1</sub> (mm)	No.
<b>LF6S</b>	150 ... 3000	<b>3 842 993 061 / L<sub>1</sub></b>

Material: aluminum, anodized

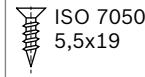


- ▶ Cover cap for trolley profile LF6S
- ▶ For use on trolleys which are not driven by a toothed belt

Cover cap	No.	FS
LF6S	2 3 842 535 645	2xFS2

Material: PA; black

**FS2**



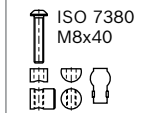
- ▶ Drive head for transferring drive torque to a toothed belt
- ▶ For direct mounting of a motor or (in conjunction with a center shaft) for mounting a hollow shaft gear or a coupling (p. 13-46)
- ▶ Mounted with longitudinal end connector directly on profile 45x60
- ▶ Profile finishing: LF blind hole drilling for longitudinal end connector

Drive head	No.	FS
LF6S	3 842 526 410	2xFS3, FS4

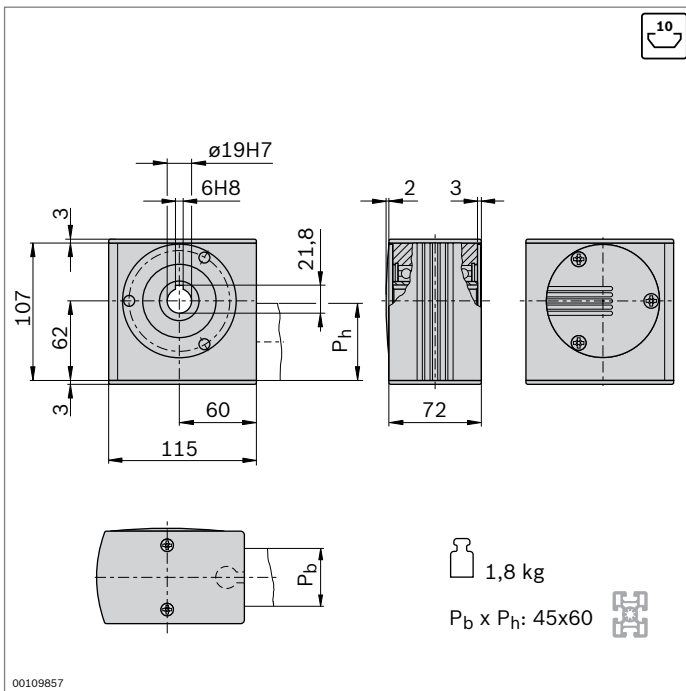
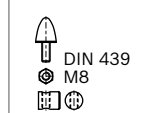
Material: aluminum, anodized  
Hollow shaft: steel; galvanized  
Caps: PA; black

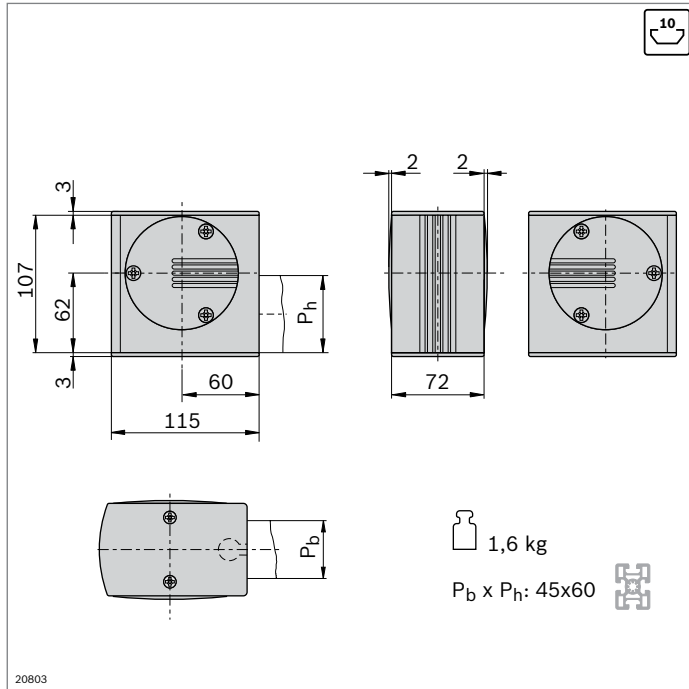
Scope of delivery: incl. fastening material (FS), cover caps

**FS3**



**FS4**



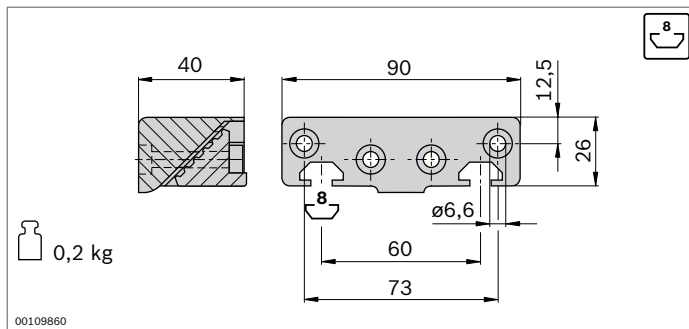
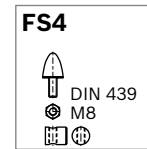
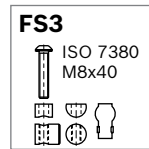


- ▶ Return head for tensioning the toothed belt and changing its direction
- ▶ Mounted directly on profile using longitudinal end connector
- ▶ Profile finishing: LF blind hole drilling for longitudinal end connector

Return head	No.	FS
<b>LF6S</b>	<b>3 842 526 411</b>	2xFS3, FS4

Material: aluminum, anodized  
 Hollow shaft: steel; galvanized  
 Caps: PA; black

Scope of delivery: incl. fastening material (FS), cover caps

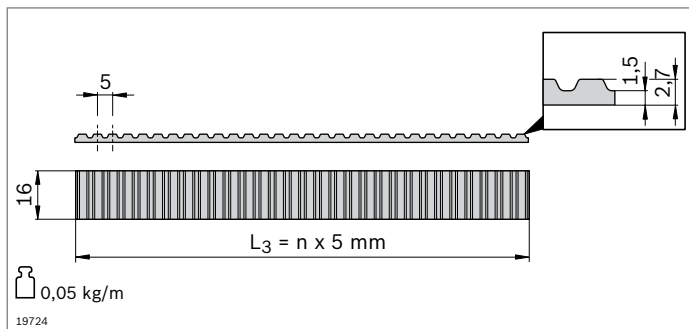
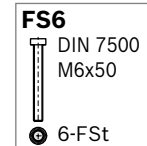
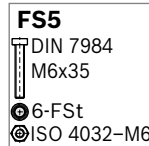


- ▶ Belt connector for fixing the toothed belt on the front of the trolley
- ▶ All connecting parts for mounting on the trolley profile LF6S are included

Belt connector	No.	FS
<b>LF6S</b>	2	<b>3 842 535 682</b> 2xFS5, 2xFS6

Material: aluminum, painted black

Scope of delivery: incl. fastening material (FS)



- ▶ Toothed belt as a trolley drive
- ▶ Pitch: AT5

Toothed belt	$L_3$ (mm)	No.
<b>LF6S</b>	300 ... 50000	<b>3 842 994 659 / <math>L_3</math><sup>1)</sup></b>
	50000	<b>3 842 513 646</b>

<sup>1)</sup>  $L_3 = 2xL_2 - L_1 + 360$

Material: PU with embedded steel wires