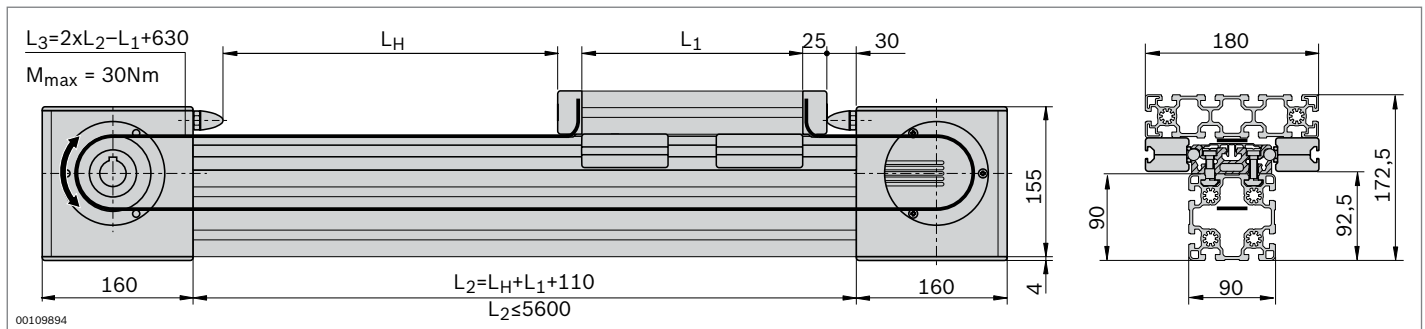


Cam roller guide LF12S – complete axis



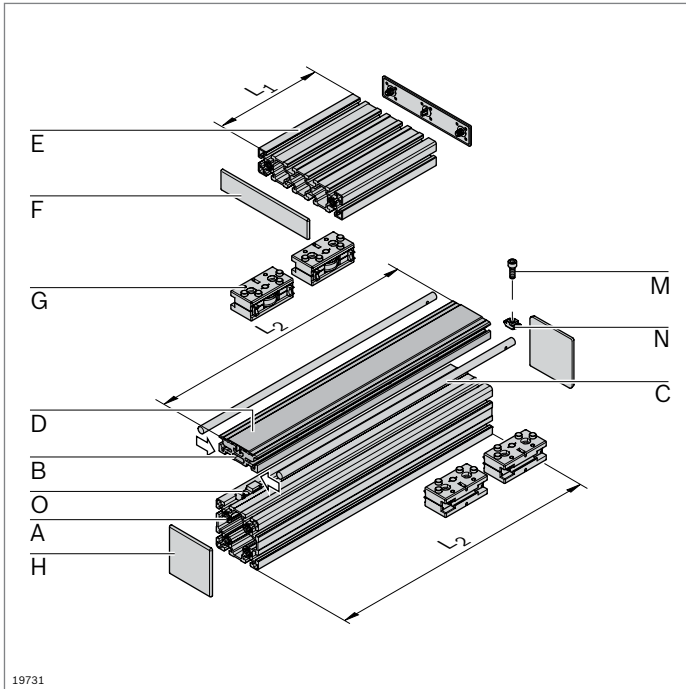
- ▶ Fully assembled cam roller guide
- ▶ Stroke and trolley length can be individually selected
- ▶ Rail profile screwed onto strut profile 90x90L
- ▶ Incl. toothed belt drive; additional notes on the drive concept (p. 13-44)



Technical data

See pages 13-57 for notes on layout and drive

Complete axis	L_H / L_1 (mm)	No.
LF12S	$L_1 + 50 \leq L_H \leq 5310$ $180 \leq L_1 \leq 1000$	3 842 998 497 / L_H / L_1



19731

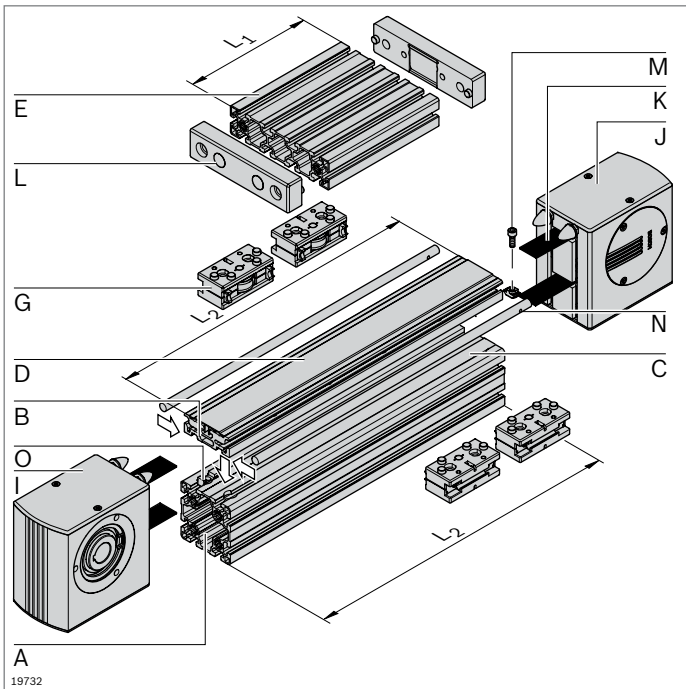
Cam roller guide LF12S – components

- Components for the individual assembly of cam roller guides, with or without drive

Parts list for cam roller guide LF12S without drive

Component	No.	Qty.	Page
A Profile 90x90L	3 842 992 415 / L ₂	1	2-46
B Guide profile LF12S	3 842 992 438 / L ₂	1	13-18
C Guide rod LF12	3 842 993 968 / L ₂	2	13-18
D Cover profile LF12S	3 842 993 062 / L ₂	1	13-18
E Profile 45x180	3 842 990 335 / L ₁	1	2-44
F Cover cap 45x180	3 842 548 795	2	2-44
G Guide bearing LF12	3 842 535 664	4	13-19
H Cover cap 90x90L	3 842 548 759	2	2-46
M Cylinder bolt DIN 7984 – M8x30		n ¹⁾	
N T-nut M8, 10 mm slot	3 842 530 287	n ¹⁾	3-4
O Sliding block	3 842 146 877	n ¹⁾	13-18

¹⁾ For identification see page 13-18



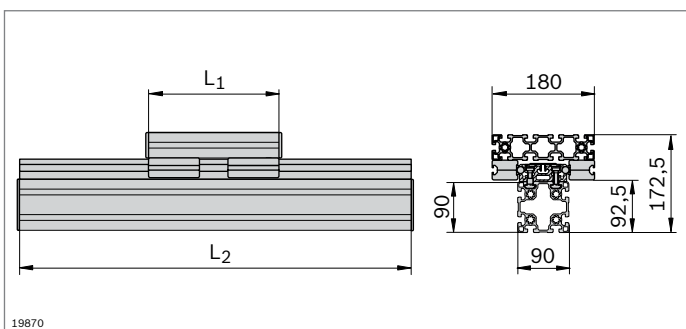
19732

Parts list for cam roller guide LF12S with drive

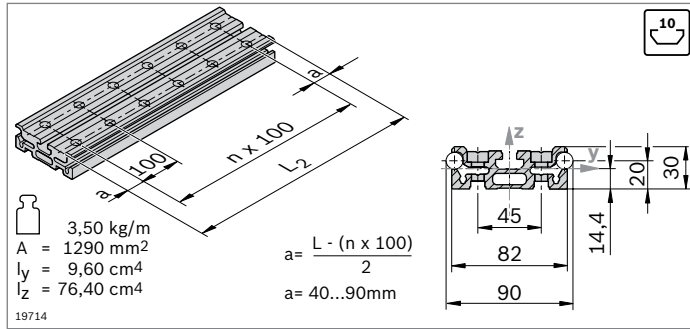
Component	No.	Qty.	Page
A Profile 90x90L LF12S	3 842 992 418 / L ₂	1	2-46
B Guide profile LF12S	3 842 992 438 / L ₂	1	13-18
C Guide rod LF12	3 842 993 968 / L ₂	2	13-18
D Cover profile LF12S	3 842 993 062 / L ₂	1	13-18
E Profile 45x180 M12	3 842 990 339 / L ₁	1	2-44
G Guide bearing LF12	3 842 535 664	4	13-19
I Drive head LF12S	3 842 526 412	1	13-21
J Return head LF12S	3 842 526 413	1	13-21
K Toothed belt	3 842 994 821 / L ₃ ¹⁾	1	13-22
L Belt connector	3 842 535 680	2	13-22
M Cylinder bolt DIN 7984 – M8x30		n ²⁾	
N T-nut M8, 10 mm slot	3 842 530 287	n ²⁾	3-4
O Sliding block	3 842 146 877	n ²⁾	13-18

¹⁾ L₃ = 2xL₂ - L₁ + 630

²⁾ For identification see page 13-18



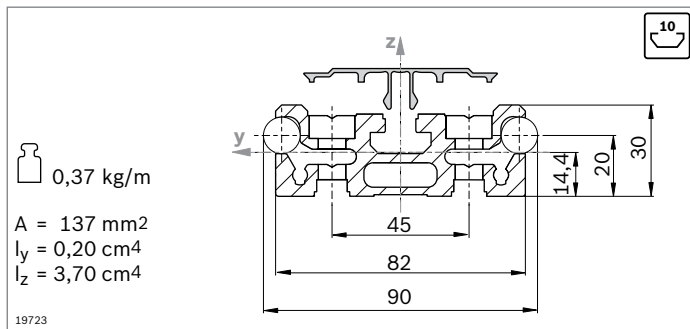
19870



- ▶ Guide profile LF12S to hold the guide rods
- ▶ Installation on MGE strut profiles with 10 mm slot or directly on a flat surface

Guide profile		L_2 (mm)	No.
LF12S	1 pcs	150 ... 5600	3 842 992 438 / L_2
	5 pcs	5600	3 842 511 841

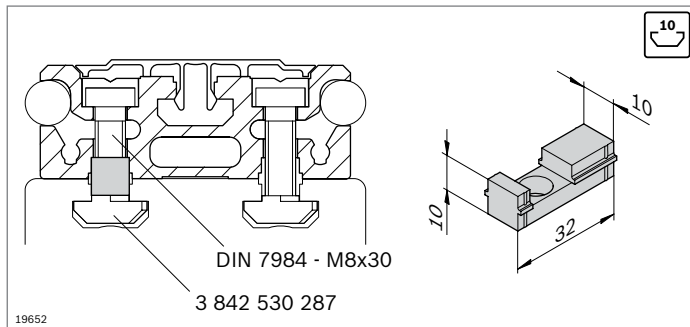
Material: aluminum, anodized
 Accessories: Cylinder bolt DIN 7984 – M8x30
 T-nut M8, 10 mm slot, **3 842 530 287**
 Sliding block, cover profile, guide rod



- ▶ Cover profile to prevent contamination on threaded connections

Cover profile		L_2 (mm)	No.
LF12S		150 ... 5600	3 842 993 062 / L_2

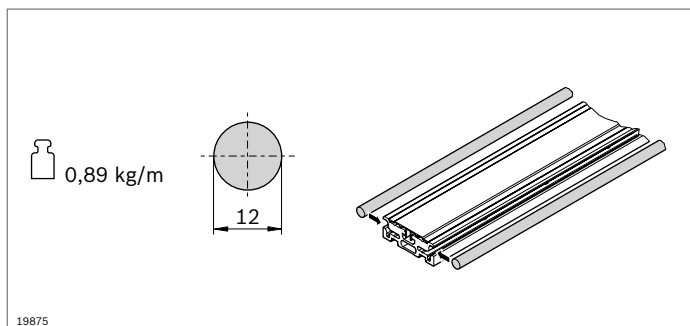
Material: PA; black



- ▶ Sliding block as a centering aid for mounting the guide profile in a 10 mm profile slot

Sliding block		No.
	50	3 842 146 877

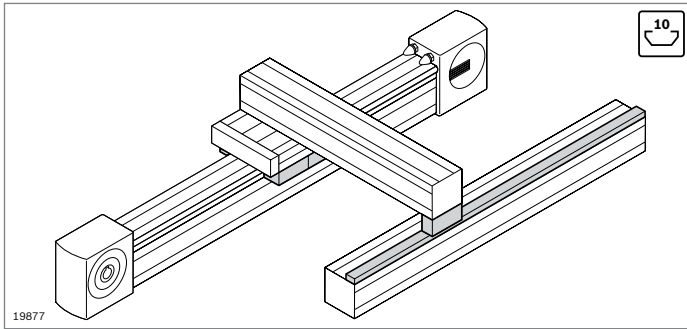
Material: PA; black



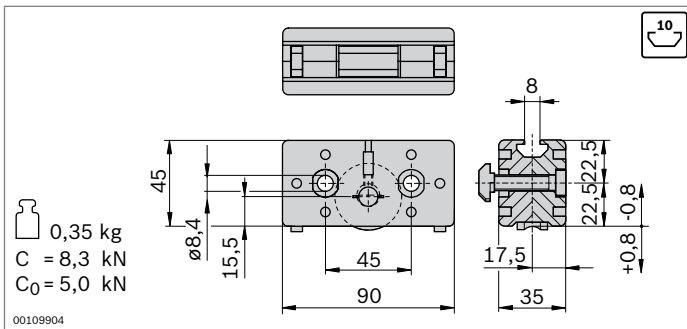
- ▶ The guide rod is pressed into the guide profile
- ▶ The guide rod guides the guide bearing

Guide rod		L_2 (mm)	No.
LF12	1	150 ... 2900	3 842 993 968 / L_2
	20	2900	3 842 539 415

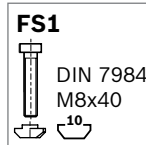
Material: Solid shaft VA, induction hardened and polished
 Condition on delivery: ungreased; greasing according to assembly instructions **3 842 527 226**



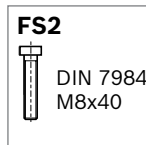
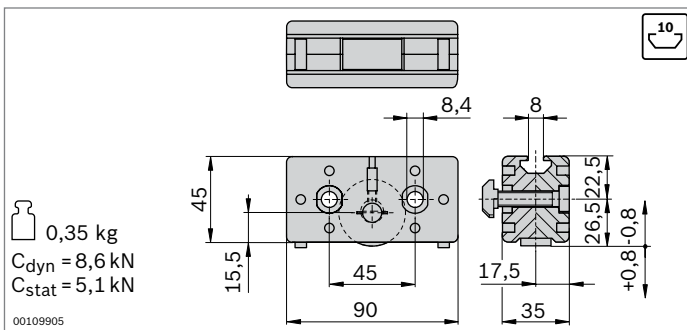
- ▶ Guide bearing for trolley construction
- ▶ Supporting bearing for brackets for bearing off-center forces
- ▶ Guide rail to support supporting bearings (p. 13-20)



- ▶ Guide bearing for trolley construction
- ▶ Guiding via guide rod
- ▶ Rollers with ball bearings, permanently lubricated
- ▶ Lubricating felts with guide rod lubrication reservoir
- ▶ Play-free roller adjustment via eccentric bolts
- ▶ Replacement of the lubricating felts possible from rear in installed state

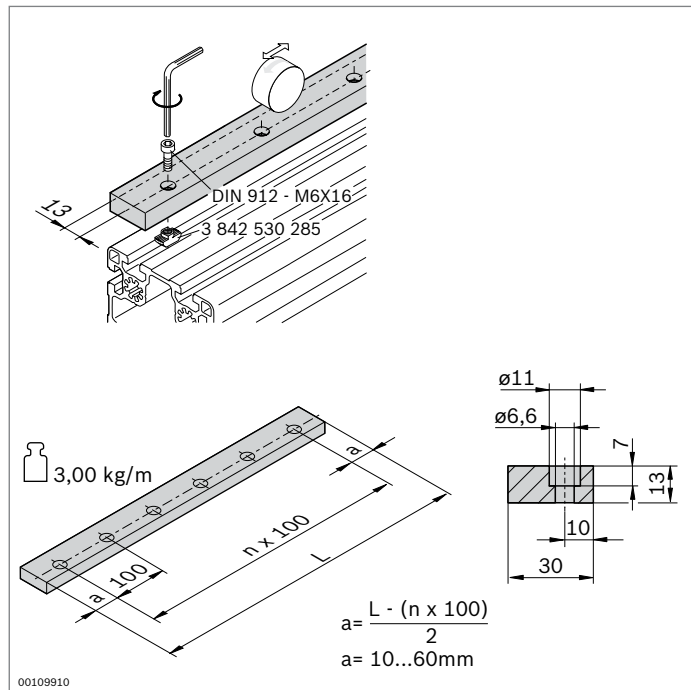


Guide bearing	No.	FS
LF12	2 3 842 535 664	2xFS1
Material:	Housing: Die-cast aluminum Roller: steel, hardened, polished	
Scope of delivery:	incl. fastening material (FS)	
Condition on delivery:	lubricating felts ungreased; greasing according to assembly instructions 3 842 527 226	



- ▶ Supporting bearing for brackets for bearing off-center forces
- ▶ For support on the guide rail
- ▶ Rollers with ball bearings, permanently lubricated
- ▶ Lubricating felts with guide rod lubrication reservoir
- ▶ Play-free roller adjustment via eccentric bolts
- ▶ Replacement of the lubricating felts possible from rear in installed state

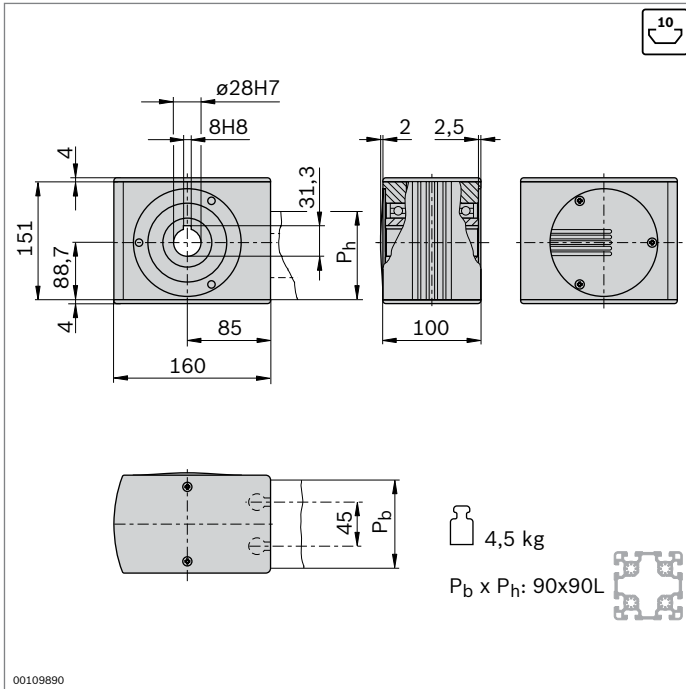
Supporting bearing	No.	FS
LF12	2 3 842 535 666	2xFS2
Material:	Housing: Die-cast aluminum Roller: steel, hardened, polished	
Scope of delivery:	incl. fastening material (FS)	
Condition on delivery:	lubricating felts ungreased; greasing according to assembly instructions 3 842 527 226	



► Guide rail to hold supporting bearings

Guide rail	L (mm)	No.
LF12	120 ... 2000	3 842 994 702 / L

Material: steel, hardened, polished
 Condition on delivery: ungreased; greasing according to assembly instructions **3 842 527 226**
 Accessories: cylinder bolt DIN 912 – M6x16
 T-nut M6, 10 mm slot (**3 842 530 285**)

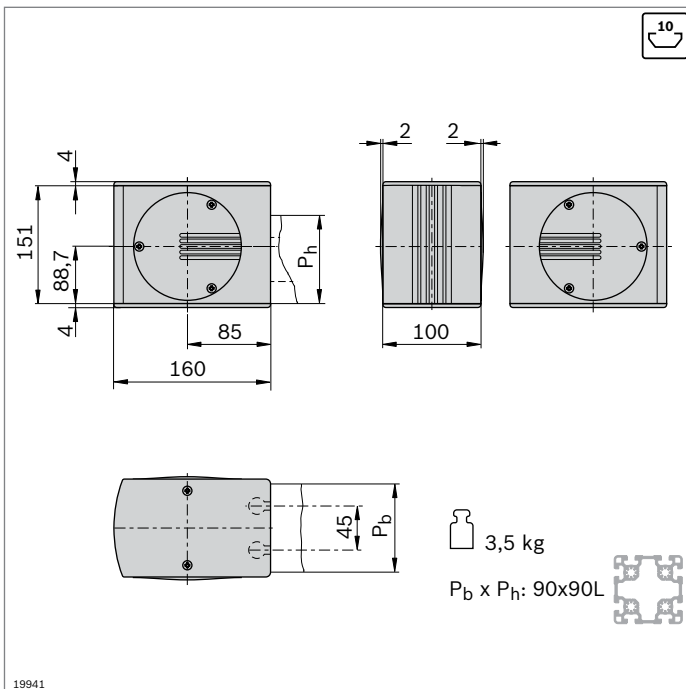
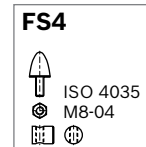
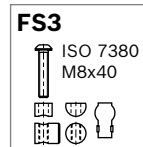


- ▶ Drive head for transferring drive torque to a toothed belt
- ▶ For direct mounting of a motor or (in conjunction with a center shaft) for mounting a hollow shaft gear or a coupling (p. 13-46)
- ▶ Mounted directly on profile by using longitudinal end connector (connector included in scope of delivery)
- ▶ Profile finishing: LF blind hole drilling for longitudinal end connector

Drive head	No.	FS
LF12S	3 842 526 412	2xFS3, 2xFS4

Material: Drive head: aluminum, anodized
Cover caps: PA, black
Hollow shaft: steel; galvanized

Scope of delivery: incl. fastening material (FS), cover caps

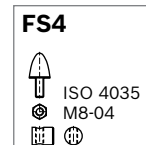
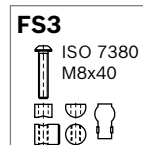


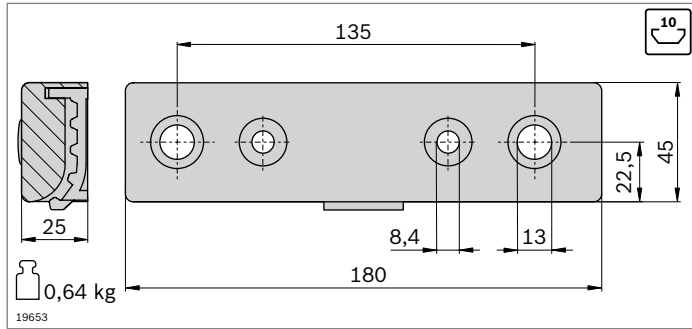
- ▶ Return head for tensioning the toothed belt and changing its direction
- ▶ Mounted directly on profile by using longitudinal end connector (connector included in scope of delivery)
- ▶ Profile finishing: LF blind hole drilling for longitudinal end connector

Return head	No.	FS
LF12S	3 842 526 413	2xFS3, 2xFS4

Material: aluminum, anodized
Hollow shaft: steel; galvanized
Caps: PA; black

Scope of delivery: incl. fastening material (FS), cover caps






- ▶ Belt connector suitable for trolley built out of strut profiles 45x180
- ▶ All connecting parts included for mounting on the profile end (LF12S) or in the slot (LF12C)
- ▶ Profile finishing for strut profile 45x180 for trolley LF12S: M12

Belt connector	No.	FS
LF12	2	3 842 535 680 2xFS5, 2xFS6, 2xFS7, 2xFS8, 4xFS9


Material: aluminum, painted black
 Scope of delivery: incl. fastening material (FS)

FS5




DIN 7984
M12x40

FS6



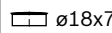
DIN 7984
M8x30
DIN 125
A8,4

FS7




DIN 7991
M8x30

FS8

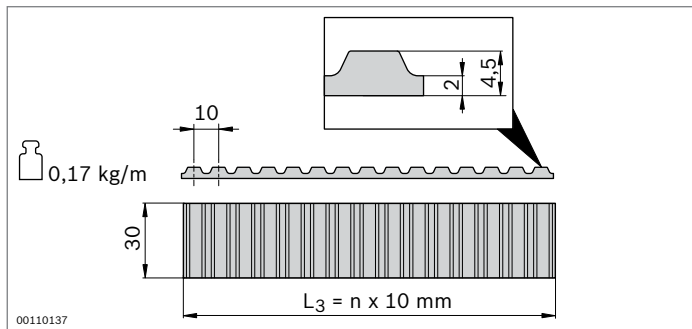


ø18x7

FS9



ø10xø5x11



- ▶ Toothed belt as a trolley drive
- ▶ Pitch: AT10

Toothed belt	L ₃ (mm)	No.
LF12	300 ... 50000	3 842 994 821 / L₃¹⁾
	50000	3 842 526 422

¹⁾ L₃ = 2xL₂ - L₁ + 630

Material: PU with embedded steel wires