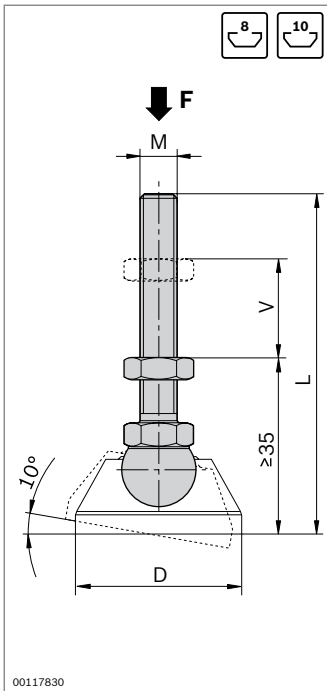


Modular leveling feet

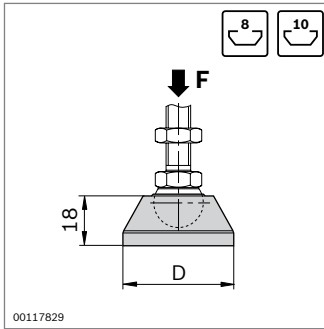


- ▶ Leveling feet for compensating irregularities in the floor up to 10°
 - Modular system, various combinations possible
 - Spindles and base plates can be combined as desired
 - Base plates with screw hole for simple screw fitting to the floor
- ▶ The damping plate prevents the transfer of vibrations and allows a defined conduction of voltages via a set of grounding components (p. 17-2)
- ▶ Profile finishing: thread M in central hole

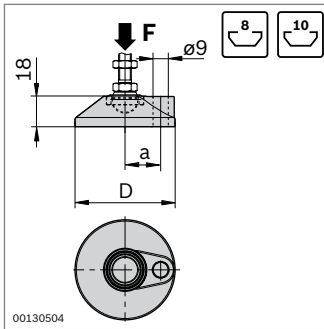
Accessories: bearing ring (p. 6-16)



Spindle	F (N)	M	L (mm)	V (mm)	ESD	No.
Stainless steel	10000	M8	75	20		20 3 842 536 811
	20000	M12	85	30		20 3 842 536 812
	20000	M12	145	80		20 3 842 537 223
	20000	M12	200	135		20 3 842 537 225
	30000	M16	85	20		20 3 842 537 227
	30000	M16	145	80		20 3 842 537 229
	30000	M16	200	135		20 3 842 537 231
	steel; galvanized	10000	M8	75	20	
20000		M12	85	30		20 3 842 537 222
20000		M12	145	80		20 3 842 537 224
20000		M12	200	135		20 3 842 537 226
30000		M16	85	20		20 3 842 537 228
30000		M16	145	80		20 3 842 537 230
30000		M16	200	135		20 3 842 537 232

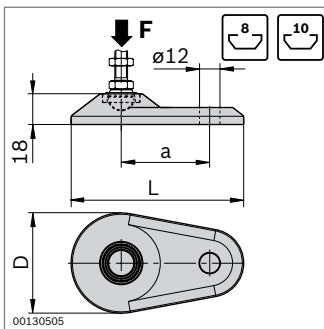


Base plate	F (N)	D (mm)	ESD	No.
Stainless steel	20000	29	▲	20 3 842 536 694
	30000	39	▲	20 3 842 536 695
	30000	44	▲	20 3 842 536 696
	30000	59	▲	20 3 842 538 673
	30000	79	▲	20 3 842 537 206
diecast zinc, black powder coating	20000	29		20 3 842 538 674
	30000	39		20 3 842 538 675
	30000	44		20 3 842 538 676
	30000	59		20 3 842 538 677
	30000	79		20 3 842 538 678
PA; black	5000	29		20 3 842 538 832
	9000	39		20 3 842 538 833
	9000	44		20 3 842 538 834
	9000	59		20 3 842 538 835
	9000	79		20 3 842 538 836



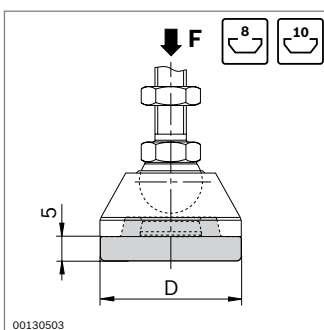
Base plate with screw hole	F (N)	D (mm)	a (mm)	No.
	30000	59	21	20 3 842 538 932
	30000	79	31	20 3 842 538 934

Material: diecast zinc, black powder coating



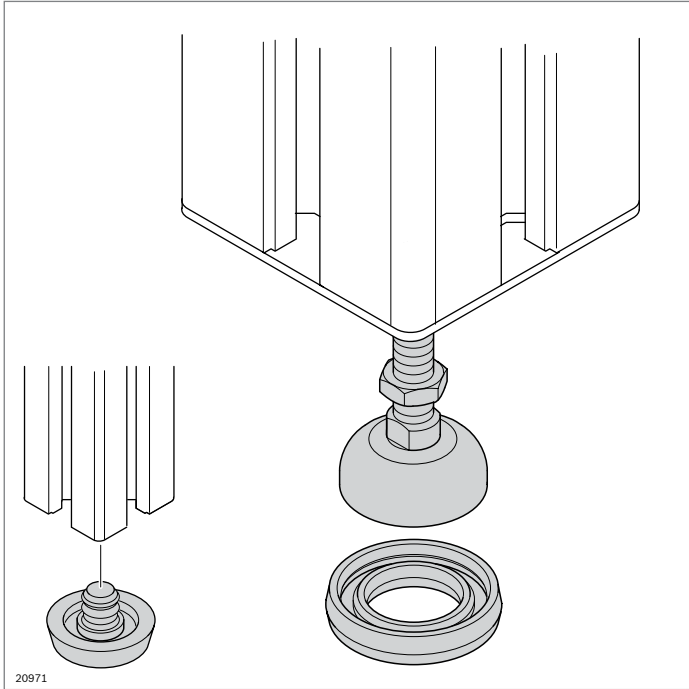
Oval base plate with screw hole	F (N)	D (mm)	a (mm)	L (mm)	No.
	30000	59	52	100	20 3 842 538 679
	30000	79	65	130	20 3 842 538 680

Material: diecast zinc, black powder coating

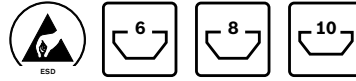


Damping plate	F (N)	D (mm)	No.
	1100	29	20 3 842 538 555
	1600	39	20 3 842 538 556
	2000	44	20 3 842 538 557
	2500	59	20 3 842 538 558
	2800	79	20 3 842 538 559

Material: PUR, black



Leveling foot, foot, damping ring



Leveling foot

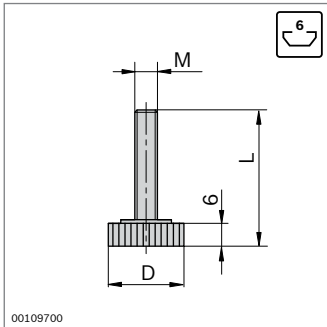
- ▶ For compensating irregularities in the floor up to 5°
- ▶ Fully assembled spindle and base plate
- ▶ Profile finishing: thread in central hole

Damping ring

- ▶ The electrically insulating damping ring prevents the transfer of vibrations and allows a defined conduction of voltages via a set of grounding components (p. 17-2)

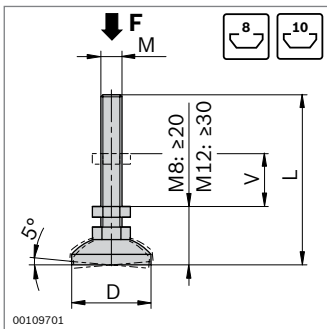
Optional accessories:

bearing ring (p. 6-16), for when cover caps with a hole are used



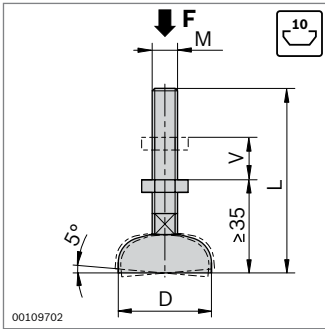
Leveling foot	M	D (mm)	L (mm)	ESD	No.
	M6	20	41	20	3 842 518 743

Material: steel/plastic



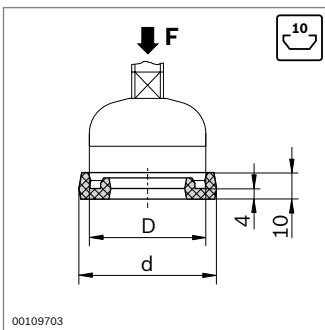
Leveling foot	F (N)	M	D (mm)	L (mm)	V (mm)	ESD	No.
	5000	M8	30	65	15	20	3 842 502 257
	8000	M12	30	72	14	20	3 842 529 025

Material: steel; galvanized



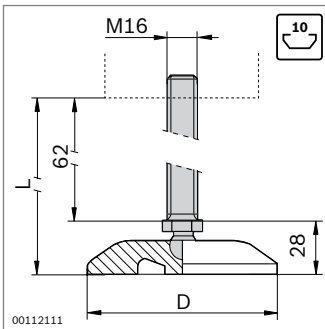
Leveling foot	F (N)	M	D (mm)	L (mm)	V (mm)	ESD	No.
	10000	M12	44	85	30		20 3 842 352 061
	20000	M16	44	145	80		20 3 842 311 956
	10000	M12	44	160	80		20 3 842 536 470
	20000	M16	44	200	135		20 3 842 554 149
	10000	M12	58	85	30		20 3 842 511 893
	20000	M16	90	85	20		20 3 842 311 950
	20000	M16	90	145	80		20 3 842 311 951
	20000	M16	90	200	135		20 3 842 527 186

Material: steel; galvanized



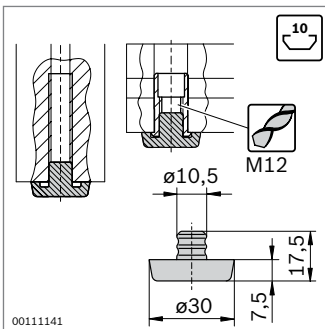
Damping ring	F (N)	D (mm)	d (mm)	No.
	1600	30	39	20 3 842 529 024
	2000	44	52	20 3 842 521 817
	2500	58	66	20 3 842 522 301
	3000	90	98	20 3 842 522 303

Material: PUR; natural, hardness: shore A 70-80



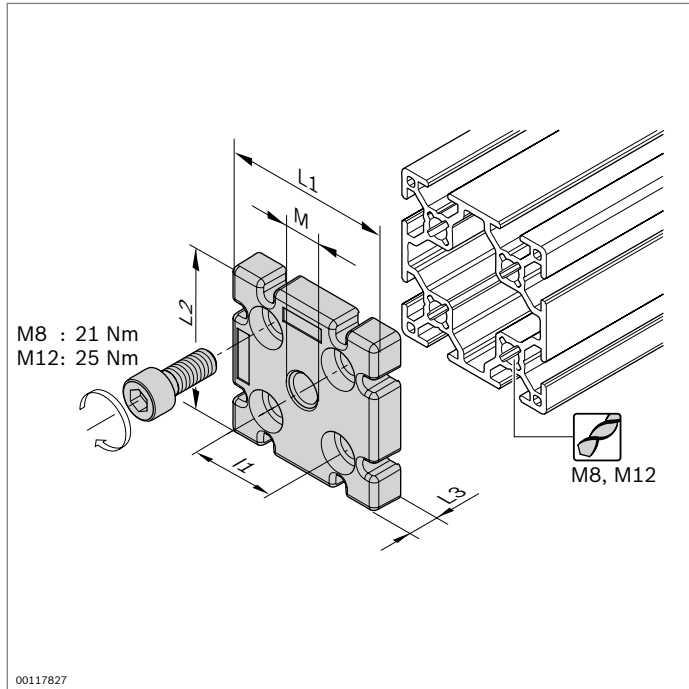
Leveling foot	M	D (mm)	L (mm)	V (mm)	No.
	M16	80	95	62	1 3 842 533 310

Material: Shaft: Stainless steel
Base plate: PA



Foot	No.
	100 3 842 514 568

Material: TPE, black



Plate



- ▶ For fastening leveling feet in profiles without a central hole
- ▶ For use as an end connector or T-connector
- ▶ Profile finishing: tapping of thread in the central hole

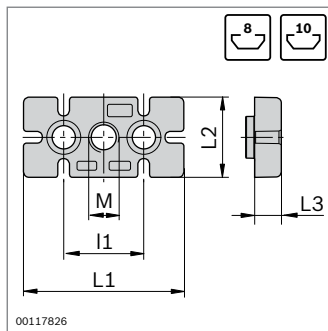


Plate	F (N)	M	L1 (mm)	I1 (mm)	L2 (mm)	L3 (mm)	No.	FS
30x60	8000	M12	60	30	30	11	3 842 536 560	2xFS1
40x80	10000	M12	80	40	40	15	3 842 536 562	2xFS2
45x90	20000	M16	90	45	45	15	3 842 536 564	2xFS2

Material: Plate: Die-cast aluminum
Fastening material: steel; galvanized
Scope of delivery: incl. fastening material (FS)

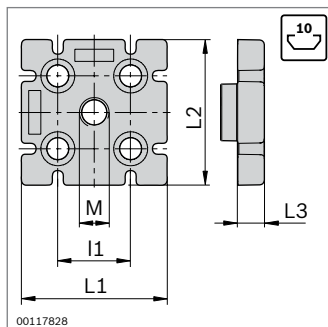
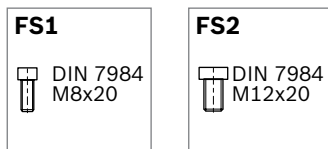
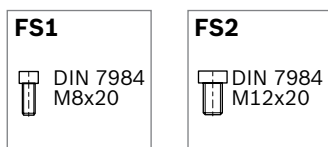
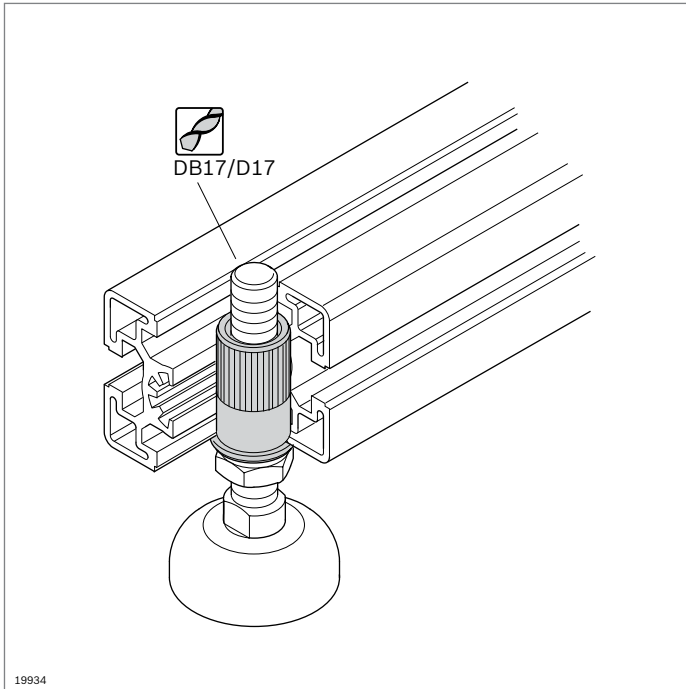


Plate	F (N)	M	L1 (mm)	I1 (mm)	L2 (mm)	L3 (mm)	No.	FS
60x60 8N	10000	M12	60	30	60	11	3 842 536 566	4xFS1
80x80L	10000	M12	80	40	80	15	3 842 529 416	4xFS2
90x90L	20000	M16	90	45	90	15	3 842 511 352	4xFS2
100x100L	20000	M16	100	50	100	15	3 842 529 417	4xFS2

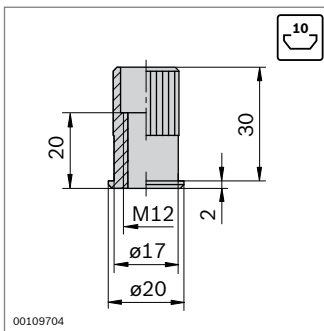
Material: Plate: Die-cast aluminum
Fastening material: steel; galvanized
Scope of delivery: incl. fastening material (FS)





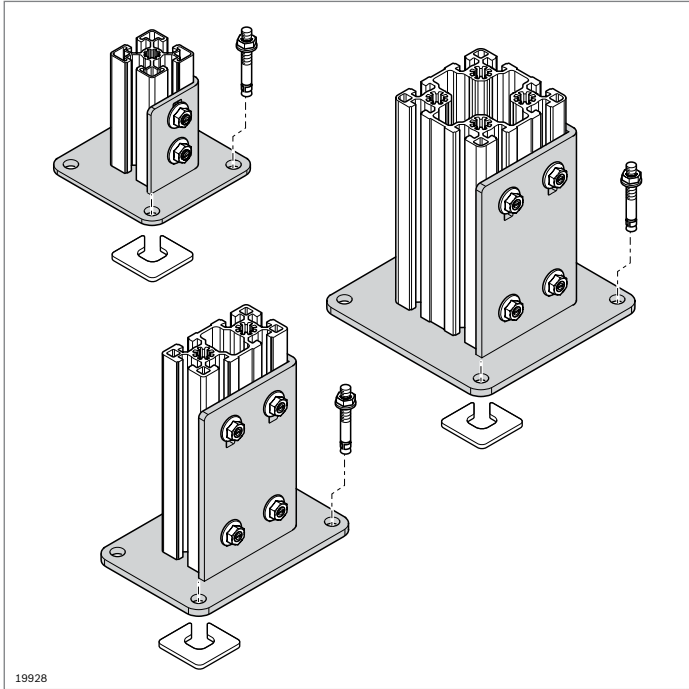
Threaded sleeve

- ▶ For fastening leveling feet at an angle to the longitudinal profile direction
- ▶ Profile finishing:
 - drilling of blind hole DB17
 - drilling of through-hole D17



Threaded sleeve	No.
	3 842 504 790

Material: steel; galvanized



Base plate, steel

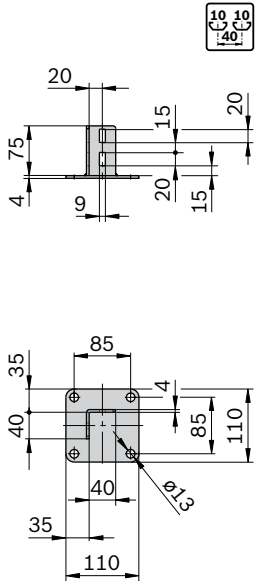


- ▶ For constructing supports for partition walls and protective walls
- ▶ Profile finishing: not required

Accessories:

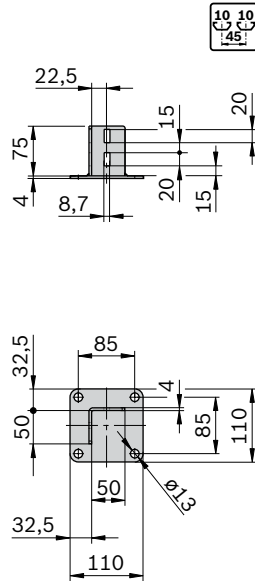
- ▶ T-bolt M8x20, 10 mm slot (p. 3-6)
- ▶ Flange nut M8 (p. 3-6)
- ▶ Floor dowl **3 842 526 561** (p. 6-12)
- ▶ Washer (p. 6-13)

40x40





00139153

45x45

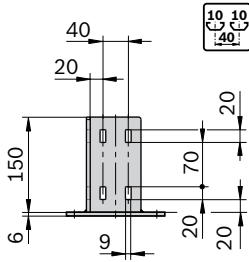


00117832

Base plate, steel	ESD No.
40x40	 3 842 542 667
45x45	 3 842 536 581

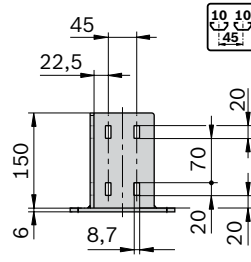
Material: steel; galvanized

40x80



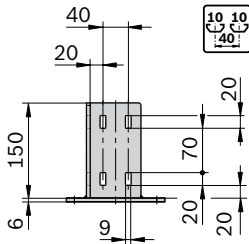
00139154

45x90



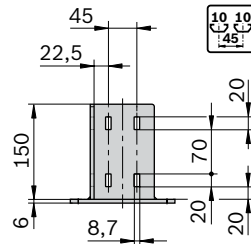
00117834

80x80



00139155

90x90



00117836

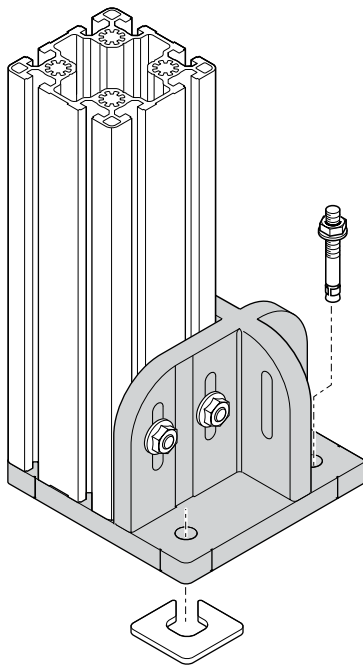
Base plate, steel	ESD No.
40x80	3 842 542 668
45x90	3 842 536 207

Material: steel; galvanized

Base plate, steel	ESD No.
80x80	3 842 542 669
90x90	3 842 536 746

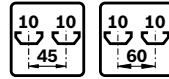
Material: steel; galvanized

120x120
150x150



19929

Base plate 120x120, 150x150



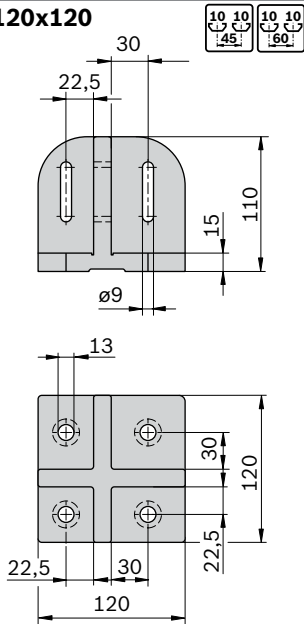
- ▶ For flush mounting of supports. No tripping hazards!
- ▶ Markings arranged at the center of the profile for precise alignment
- ▶ Anchoring with floor dowel

Required accessories:

- ▶ T-bolt M8x30 **3 842 528 721** (p. 3-6)
- ▶ Flange nut M8 **3 842 345 081** (p. 3-6)
- ▶ Floor dowel **3 842 526 561** (p. 6-12)
- ▶ Washer (p. 6-13)

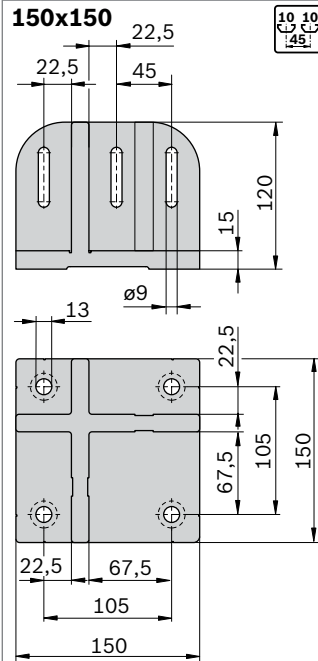
6

120x120



00109708

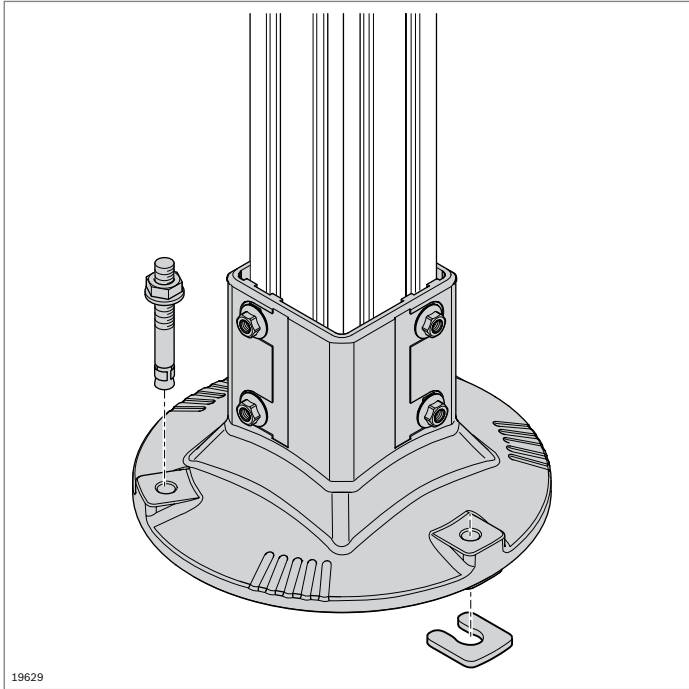
150x150



00109711

Base plate	ESD	No.
120x120	(A)	3 842 527 553
150x150	(A)	3 842 524 469

Material: Die-cast aluminum



19629

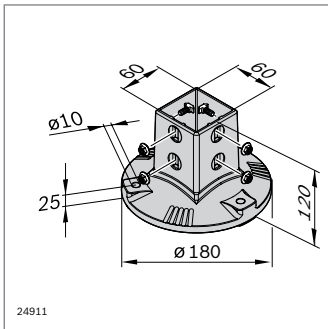
Foot Floor dowel, washer

Foot

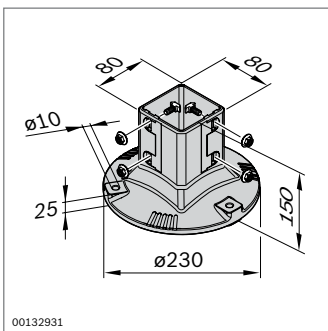
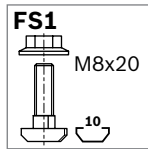
- ▶ For constructing supports made of 80x80L and 60x60 profiles
- ▶ Large installation surface for good stability
- ▶ Easy cleaning due to small number of horizontal surfaces
- ▶ Open on the inside to allow draining of liquids
- ▶ End stop as depth limit for profile (removable)

Required accessories:

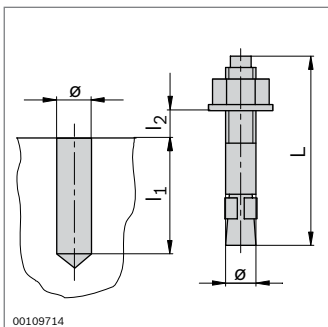
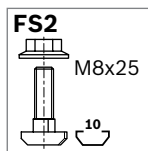
- ▶ floor dowel **3 842 540 668**
- ▶ washer **3 842 546 717** or **3 842 546 718**



24911



00132931



00109714

Foot, AL	No.	FS
60x60	1 3 842 544 875	4xFS1
Material: aluminum, silver coating (RAL 9006)		
Fastening material: steel; galvanized		
Scope of delivery: incl. fastening material (FS1)		

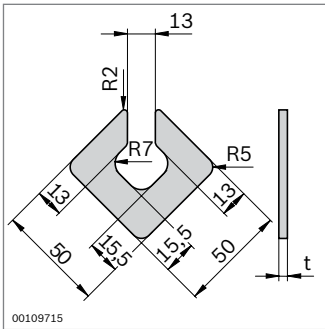
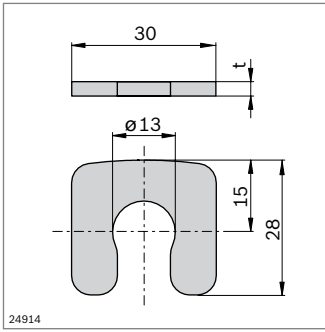
Foot	No.	FS
80x80	3 842 540 173	4xFS2
Material: aluminum, silver coating (RAL 9006)		
Fastening material: steel; galvanized		
Scope of delivery: incl. fastening material (FS1)		

Floor dowel

- ▶ For anchoring the base plates

Floor dowel	ø	L	l ₁	l _{2 max}	No.
	(mm)	(mm)	(mm)	(mm)	
	8	80	65	15 100	3 842 526 560
	10	90	70	15 100	3 842 526 561
	8	95	65	30 100	3 842 540 668

Material: steel; galvanized



Washer

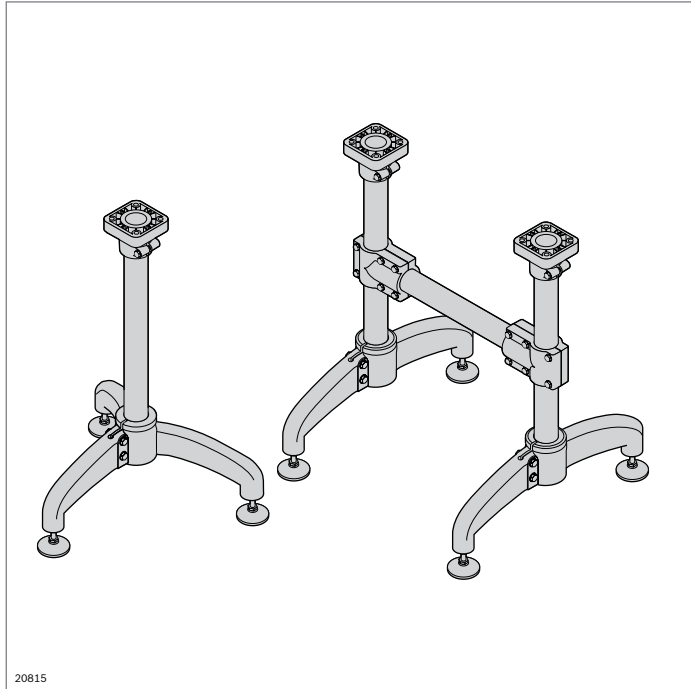
► For leveling on uneven flooring

Washer	t (mm)		No.
for round feet	1	100	3 842 546 717
	3	100	3 842 546 718

Material: steel, stainless

Washer	t (mm)		No.
for square feet	1	100	3 842 528 189
	4	100	3 842 528 191

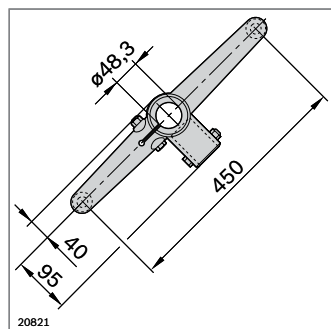
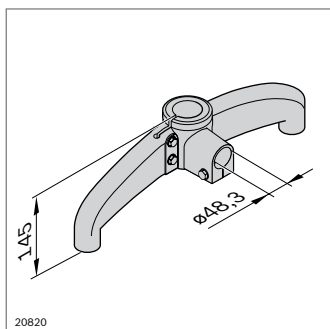
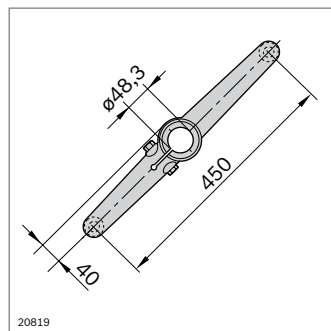
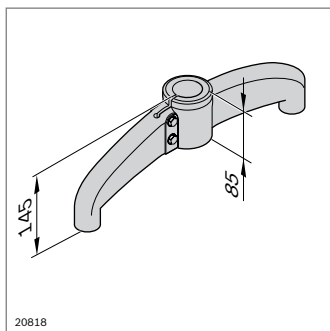
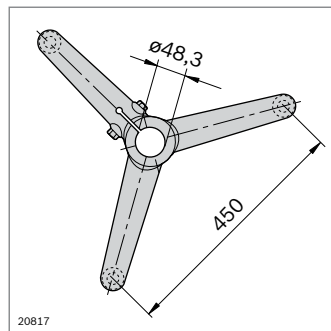
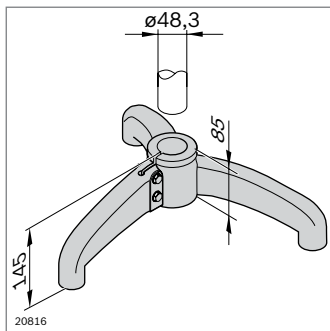
Material: steel, stainless



Foot, stainless steel

- ▶ Components for constructing feet and frames using the stainless steel tube D 48.3
- ▶ Tube fastened by clamping
- ▶ Shaft thread M16

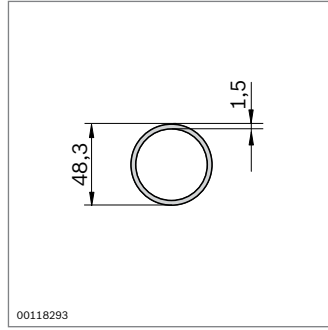
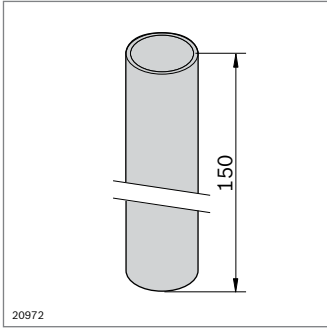
Optional accessories:
leveling foot **3 842 533 310** (p. 6-5)



Foot	No.
Tripod	3 842 533 307
Material:	Foot: Stainless steel Fastening material: Stainless steel

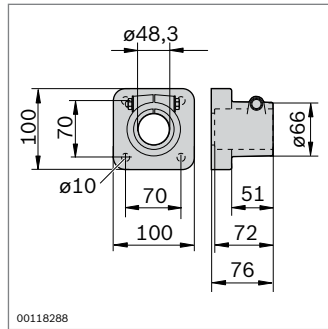
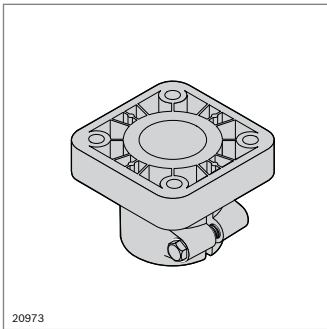
Foot	No.
Bipod	3 842 533 308
Material:	Foot: Stainless steel Fastening material: Stainless steel

Foot	No.
Bipod with flange	3 842 533 309
Material:	Foot: Stainless steel Fastening material: Stainless steel



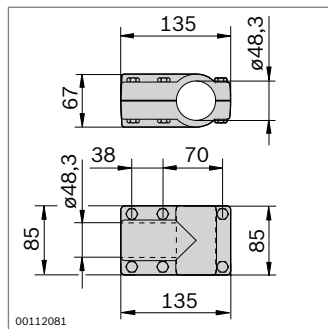
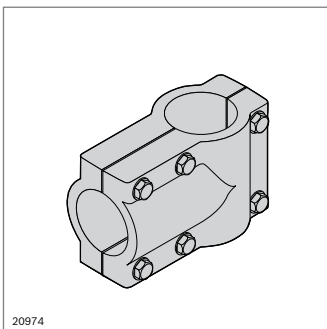
Tube D 48.3		L (mm) No.	
1 pcs		200 ... 3000	3 842 993 308 / L
	6 pcs	3000	3 842 533 901

Material: Stainless steel



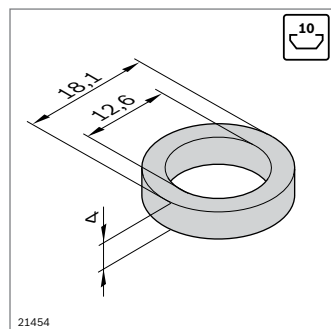
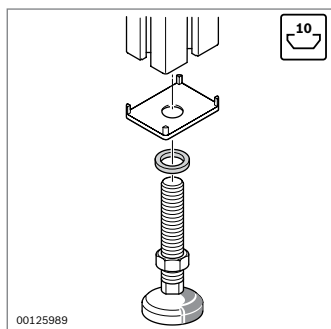
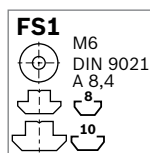
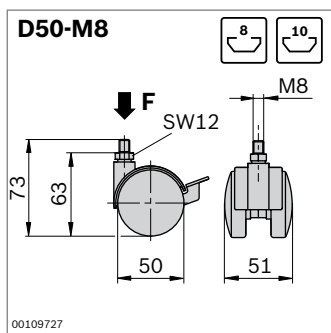
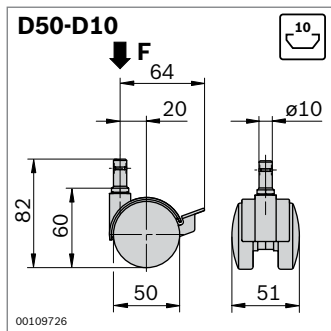
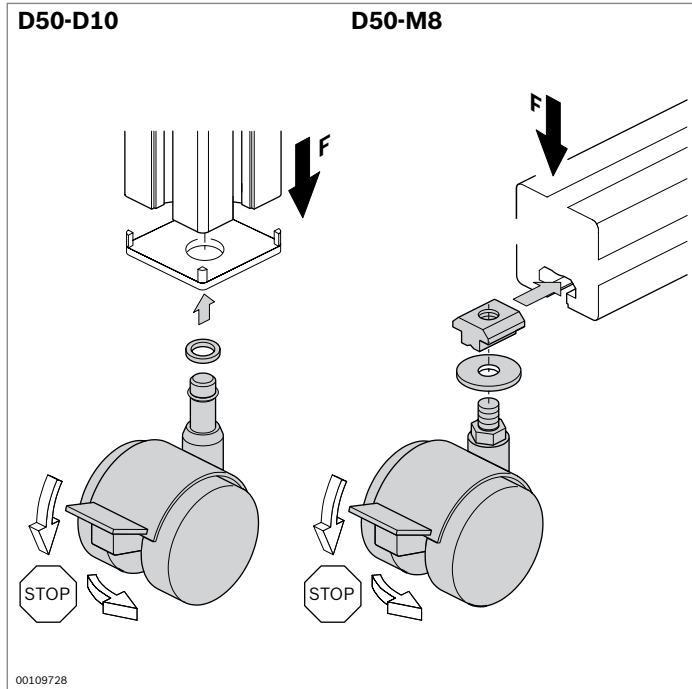
Flange	No.
	3 842 533 305

Material: Flange: PA
Fastening material: Stainless steel



Cross connector	No.
	3 842 533 306

Material: PA
Fastening material, adjustment screw: Stainless steel



Double wheel



- ▶ Attractive-looking double wheel for light applications
- ▶ Made of oil-resistant material
- ▶ Double wheel with lock
- ▶ Double wheel D50-D10 for insertion in the central hole with a diameter of 10 mm
- ▶ Double wheel D50-M8 for bolting into the profile slot

Double wheel	F (N)	ESD	No.
D50-D10	400	4	3 842 515 457
	400	4 ¹⁾	3 842 515 459

¹⁾ Conduction resistance $\leq 10^6 \Omega$

Material: Housing, wheel, lock: PA
 Running surface: PU (not with ESD version)
 Fastening material: steel; galvanized

Double wheel	F (N)	ESD	No.	FS
D50-M8	400	4	3 842 535 669	FS1
	400	4 ¹⁾	3 842 535 670	FS1

¹⁾ Conduction resistance $\leq 10^6 \Omega$

Material: Housing, wheel, lock: PA
 Running surface: PU (not with ESD version)
 Fastening material: steel; galvanized

Bearing ring

- ▶ For cover caps with hole in the sizes 40x40, 45x45, 50x50 and 60x60
- ▶ For M12 threads
- ▶ To protect the caps when tightening accessories

Bearing ring	No.
	100 3 842 555 653

Material: diecast zinc