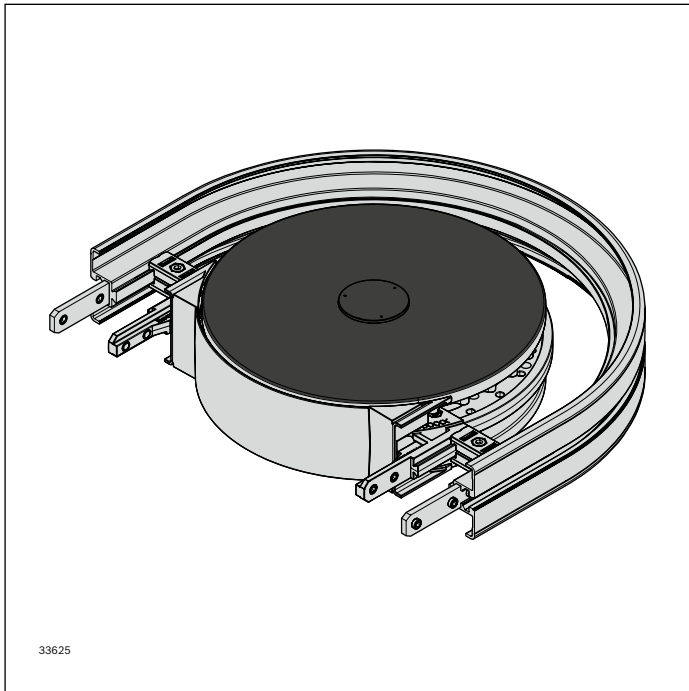


Curve wheel AL ESD



The curve wheel AL ESD provides a horizontal direction change for the conveyor chain. It enables low-friction direction changes with very small radii. For attachment options, see the matrix on page 228

- Size: 65, 90
- Deflection angles see table on page 181, other deflection angles on request
- Suitable chain type: ESD conveyor chain
- For circuit systems without conveyor chain return in bottom run (using a curve wheel or connection drive), the appropriate cover must be used for personal safety reasons
- With conductive wheel

Note: High-pressure cleaning of the ball bearings is not permitted.

- No interfering contours above chain plate height

Scope of delivery:

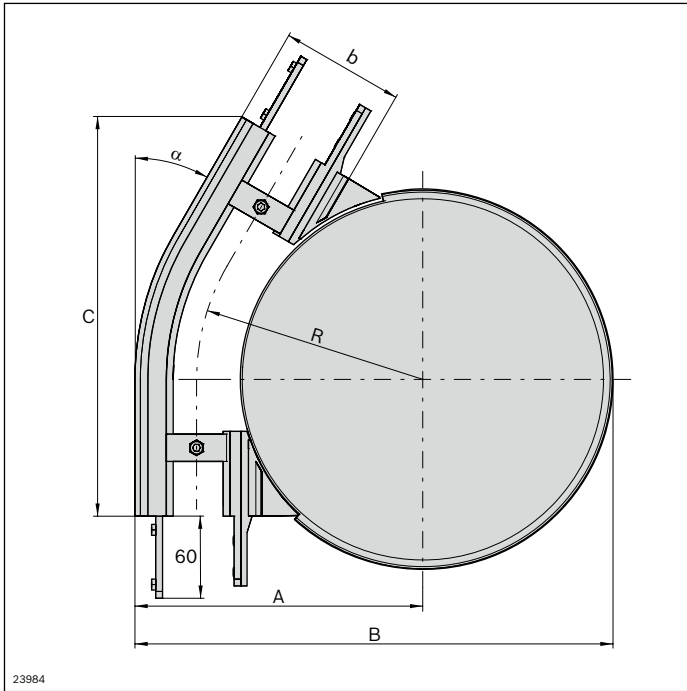
Incl. fastening material for mounting to AL section profiles

Condition on delivery:

Fully assembled

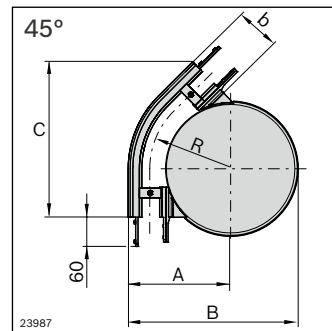
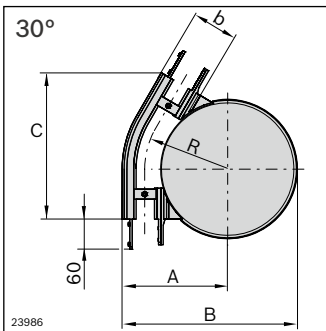
Material:

- Housing: Aluminum, die-cast
- Chain wheel: PA ESD; black
- Ball bearings: Stainless steel/ FDA

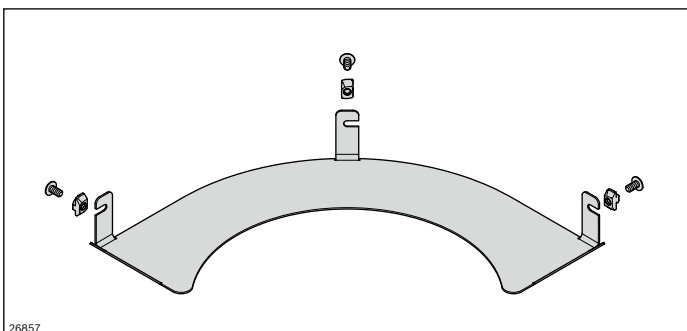
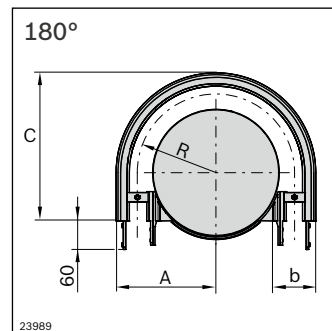
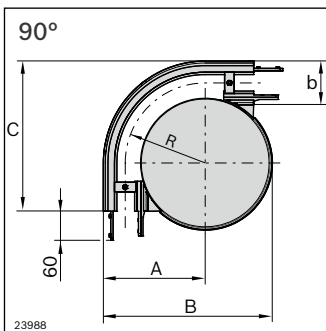


Curve wheel AL ESD	α (°)	No.
VFplus 65	30	3 842 553 029
	45	3 842 553 030
	90	3 842 553 031
	180	3 842 553 032
VFplus 90	30	3 842 553 033
	45	3 842 553 034
	90	3 842 553 035
	180	3 842 553 036

5

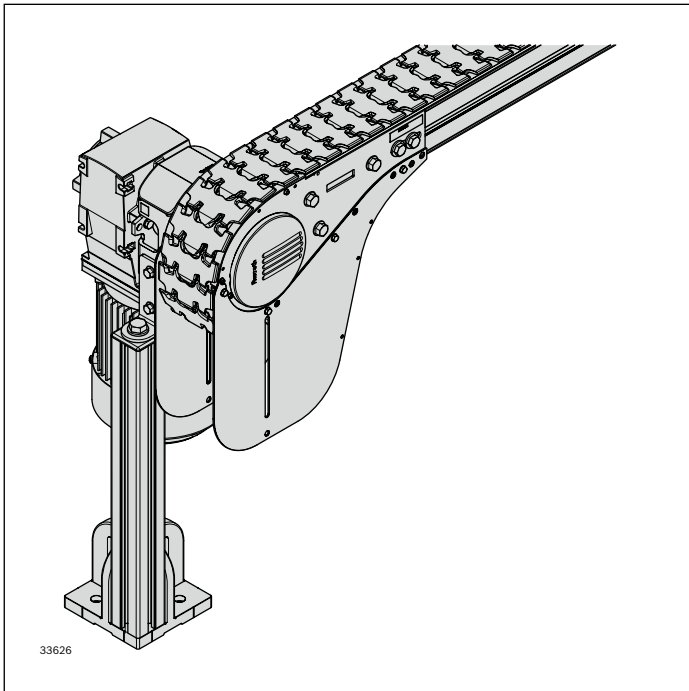


b (mm)	α (°)	R (mm)	A (mm)	B (mm)	C (mm)
65	30	153.0	185.5	324.5	279.4
	45	153.0	185.5	324.5	301.9
	90	153.0	185.5	324.5	285.5
	180	153.0	185.5	-	285.5
90	30	165.5	210.5	349.5	291.9
	45	165.5	210.5	349.5	319.6
	90	165.5	210.5	349.5	310.5
	180	165.5	210.5	-	310.5



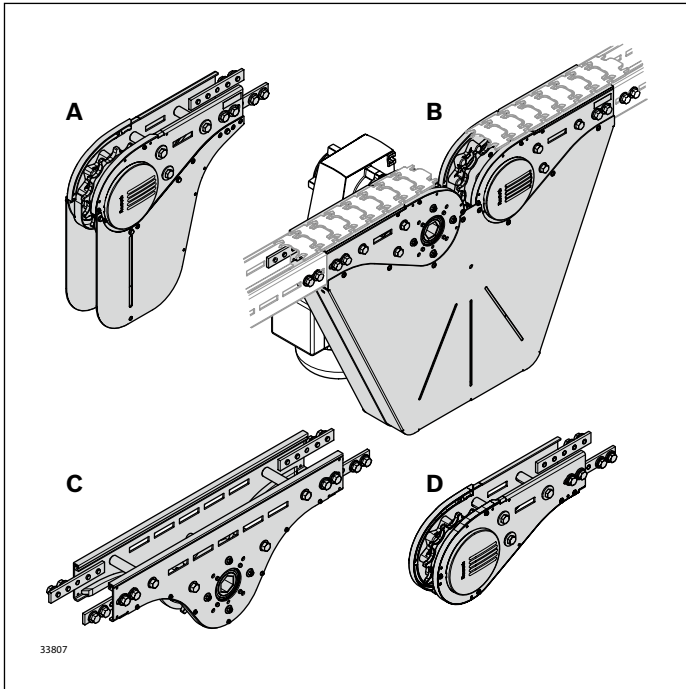
Protective cover AL	α (°)	No.
VFplus 65	30°	3 842 551 545
	45°	3 842 551 546
	90°	3 842 551 547
	180°	3 842 551 548
VFplus 90	30°	3 842 551 549
	45°	3 842 551 550
	90°	3 842 551 551
	180°	3 842 551 552

Drive and return unit ESD



Base unit STS
(head drive direct or center
or connection drive)
or return unit STS
+
Configurable STS drive kit
(standard gear motor or round shaft)
+
AL-STS adapter
=
Complete drive for ESD systems

Note: The active and passive bridges are not conductive, meaning that no ESD-critical processes should be carried out near bridges.

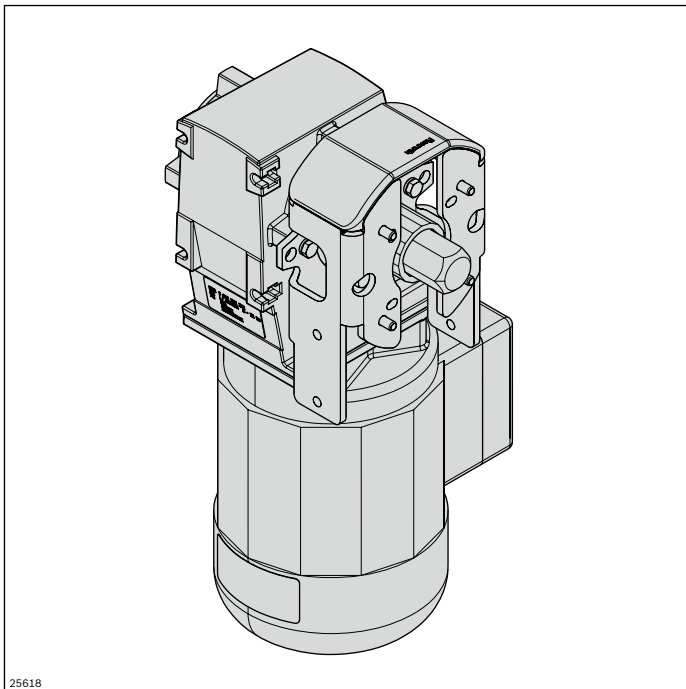


A Basic unit head drive direct, STS	No.
VFplus 65 direct	3 842 547 522
VFplus 90 direct	3 842 547 523
See page 146	

B Basic unit connection drive STS	No.
VFplus 65 direct	3 842 553 914
VFplus 90 direct	3 842 553 915
See page 148	

C Basic unit center drive STS	No.
VFplus 65 direct	3 842 552 940
VFplus 90 direct	3 842 552 941
See page 150	

D STS return unit	No.
VFplus 65	3 842 547 528
VFplus 90	3 842 547 529
See page 152	



Drive kit VFplus	SP	No.
	STS	3 842 998 291

SP = STS, see page 156

Note:

- The drive kit is to be supported with the holder motor leg set STS (3 842 549 365) and an ESD motor leg set
- The selection of the parameter SP = STS is imperative. Even if an aluminum track is used because centering is not possible on an AL flange.

Required accessories:

ESD motor leg sets, see page 188