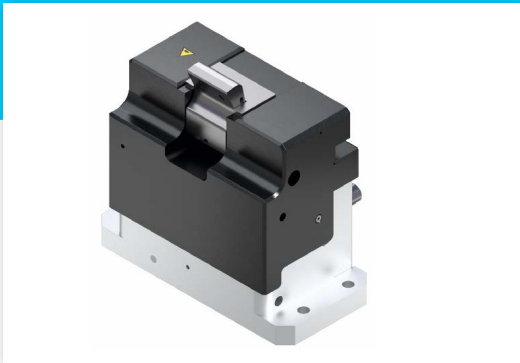


Product introduction

TS 5 Electrical stop gates

Assembly Technology | Transfer System TS5 | Electrical stop gates VE 5/D-1000-E and VE 5/OCD-1000-E



The stop gates are used for damped stopping of a workpiece pallet at the defined contact surface and separating of workpiece pallets in the longitudinal transport.

With the electrical stop gates, fully electric systems can be realized and provide an alternative to pneumatic stop gates.

- **Product description**

	Maximum operation load in kg
Speed in m/min	VE 5/D-1000-E; VE 5/OCD-1000-E
6	1000
9	1000
12	900
18	700

- **Benefits**

- Alternative product for pneumatic stop gates for the setup of fully electrical systems
- Combination with all TS 5 pallets possible
- Integrated damping function
- The stop gate gets shipped with profile

- **New products – incl. material numbers**

New product	Material number	Description
VE 5/D-1000-E	3842998924	b= 455; 650; 845; 1040 mm
VE 5/OCD-1000-E	3842998925	b=400... 1200 mm

- **Date of introduction:** Available from now on

- **Documentation**

- Online product catalog: <https://www.boschrexroth.com/ics/cat/?cat=Assembly-Technology-Catalog&m=XC&u=si&o=Desktop&p=p1078507&pi=B0612969-DCE4-18D7-D58C6F1B9F2AA177> ICS_82